

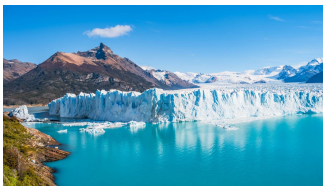
IHRE REISE

*Wunder Patagoniens und der
 Antarktis - Kreuzfahrt und
 Landreise*

Reisetermin
 27.12.2027 - 16.01.2028

Reisedauer
 21 Tage

Reederei / Schiff
 Scenic Eclipse / SCENIC Luxury Cruises & Tours



Scenic Eclipse Veranda Suite A, Deck 8



Doppelbelegung



€ 34.415

pro Person

Einzelbelegung



€ 58.535

pro Person

Scenic Eclipse Deluxe Veranda Suite CA, Deck 6



Doppelbelegung



€ 34.525

pro Person

Einzelbelegung



€ 58.755

pro Person

Scenic Eclipse Deluxe Veranda Suite AA, Deck 7



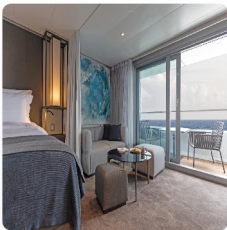
Doppelbelegung


€ 35.075
 pro Person

Einzelbelegung


€ 59.855
 pro Person

Scenic Eclipse Grand Deluxe Veranda Suite CD, Deck 6



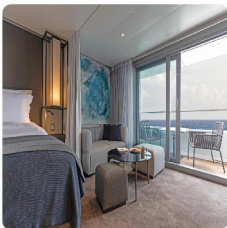
Doppelbelegung


€ 35.735
 pro Person

Einzelbelegung


€ 61.175
 pro Person

Scenic Eclipse Grand Deluxe Veranda Suite AD, Deck 8



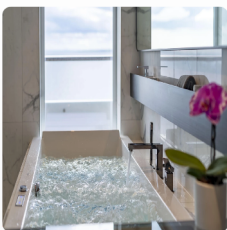
Doppelbelegung


€ 36.230
 pro Person

Einzelbelegung


€ 62.165
 pro Person

Scenic Eclipse Spa Suite S, Deck 8



Doppelbelegung


€ 39.640
 pro Person

Einzelbelegung


€ 68.985
 pro Person

Scenic Eclipse Spa Suite SA, Deck 9



Doppelbelegung


€ 39.860
 pro Person

Einzelbelegung


€ 69.425
 pro Person

Scenic Eclipse Panorama Suite P, Deck 8



Doppelbelegung


€ 53.170
 pro Person

Einzelbelegung


€ 96.045
 pro Person

Scenic Eclipse Grand Panorama Suite GP, Deck 6



Doppelbelegung


€ 55.920
 pro Person

Einzelbelegung


€ 101.545
 pro Person

Scenic Eclipse Owners Penthouse Suite OP, Deck 9



Doppelbelegung


€ 60.100
 pro Person

Einzelbelegung


€ 109.905
 pro Person

Scenic Eclipse Veranda Suite C, Deck 6



Doppelbelegung



Nicht verfügbar

Einzelbelegung



Nicht verfügbar

Scenic Eclipse Two-Bedroom Penthouse Suite TP, Deck 9



Doppelbelegung



Nicht verfügbar

Einzelbelegung



Nicht verfügbar

Scenic Eclipse Deluxe Veranda Suite DA, Deck 5



Doppelbelegung



Nicht verfügbar

Einzelbelegung



Nicht verfügbar

Scenic Eclipse Deluxe Veranda Suite BA, Deck 7



Doppelbelegung



Nicht verfügbar

Einzelbelegung



Nicht verfügbar

Scenic Eclipse Grand Deluxe Veranda Suite BD, Deck 7



Doppelbelegung



Nicht verfügbar

Einzelbelegung



Nicht verfügbar

Scenic Eclipse Veranda Suite B, Deck 7



Doppelbelegung



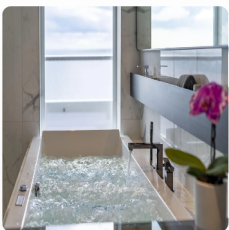
Nicht verfügbar

Einzelbelegung



Nicht verfügbar

Scenic Eclipse Spa Suite SB, Deck 9



Doppelbelegung



Nicht verfügbar

Einzelbelegung



Nicht verfügbar

Scenic Eclipse Deluxe Veranda Suite DB, Deck 5



Doppelbelegung




Nicht verfügbar

Einzelbelegung




Nicht verfügbar

Scenic Eclipse Veranda Suite D, Deck 5




Doppelbelegung



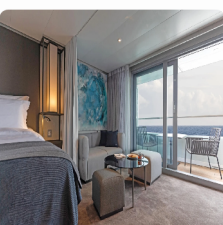
Nicht verfügbar

Einzelbelegung



Nicht verfügbar

Scenic Eclipse Grand Deluxe Veranda Suite DD, Deck 5




Doppelbelegung



Nicht verfügbar

Einzelbelegung



Nicht verfügbar



Buenos Aires, Argentina

Tag 1 Welcome to Buenos Aires, where you'll stay overnight. Perhaps plan to spend some time in the city, nicknamed the 'Paris of South America'. Resplendent with Belle Époque buildings, sidewalk cafes and green spaces, there's the fiery passion of Latin America – a collective love for football, flame-cooked meats (asado) and the tango.

Some of the highlights are La Boca, a colourful, creative mecca with a must-do art walk, and San Telmo, a former aristocratic neighbourhood abandoned during a 19th-century epidemic. Mansions were turned into conventillos (shared housing), boutique hotels, antique shops, and tango clubs, exuding a captivating bohemian vibe. Enjoy an overnight stay at your hotel.

Buenos Aires > Ushuaia

Tag 2 Depart Buenos Aires on an exclusive charter flight to Ushuaia the gateway to Antarctica and the world's southernmost city, nestled on the rugged shores of Tierra del Fuego. The Captain and crew will warmly greet you as you board your ultra-luxury Discovery Yacht.

Raise a glass of Champagne as you set sail through the legendary Beagle Channel, tracing the path of Charles Darwin's historic voyage. From your private verandah or the Observation Deck, take in breathtaking views of the snow-capped Andean peaks and pristine Patagonian wilderness—marking the beginning of an unforgettable expedition.

At Sea

Enjoy breakfast in your suite as your ultra-luxury Discovery Yacht navigates the legendary Drake Passage bound for Antarctica. Take in the vast expanse of the Southern Ocean as moment brings you closer to an unforgettable adventure.

Tag 3 Feel the excitement building up as the Discovery Team shares with you all the details on how your Zodiac, helicopter[^], submarine[^] and other discovery expeditions will work. Get familiar with the team and your polar equipment – your expedition kit includes an expedition parka and water bottle that are yours to take home, plus the use of specialised polar boots, trekking poles and specific equipment you need for kayak and paddleboard excursions. Between landings, your outdoor gear will be stored in a personal locker in our convenient Discovery Centre. Prepare yourself for unparalleled 'pinch-me' moments, and be exposed to the unpredictability of the region, with your expert team deciding the course of action in the coming days.

The team will make every attempt to have many landings and Discovery Excursions, including Zodiac tours, kayaking and optional helicopter[^] flights and submarine[^] dives.

Antarctica

Tag 4 Today you will enter Antarctic waters, an unpredictable but stunningly beautiful environment. Put on your complimentary polar parka and head to the Observation Deck to spot icebergs for the first time – it's a feeling that will stay with you forever.

Watch out for whale blows in the distance. Your Discovery Team is available to provide insightful information.

Be sure to check your daily program for the essential biosecurity and boot fitting schedule. And join the fascinating enrichment lecture on marine and seabird life – a captivating experience that will enhance your knowledge and connection to the natural world around you.

Antarctica

Slide open the floor-to-ceiling doors of your verandah suite to see icebergs sculpted by nature and glacial mountains rising from the ocean. Antarctica is a birdwatcher's delight, home to a variety of species, so keep your eyes peeled for wandering albatrosses, shearwaters, giant petrels and more.

Tag 5

Due to the extraordinary nature of the region, excursions throughout your Expedition Voyage are dependent on weather conditions. Your experienced Captain and Discovery Leader, who have made countless journeys to Antarctica, will use their expertise to design a bespoke voyage, making the most of your time in this spectacular destination.

Scenic Discovery:

Daily experiences may include cruising on Zodiacs, stepping ashore to view vast penguin rookeries or historic huts, and kayaking or paddle boarding around icebergs. Wherever your voyage takes you, you will have countless "pinch me" moments.

Antarctica

Tag 6

Start your day with freshly squeezed juice, steaming barista-made coffee or tea delivered to your door by your butler. Then set out on Zodiac excursions to explore breathtaking glaciated bays, tranquil channels and pristine landing sites. As you trek across the Antarctic wilderness, meet the adorable chinstrap, Adélie and gentoo penguins that inhabit this magical region

Small groups offer the best way to experience an environmentally sensitive destination like Antarctica. Guests will board the zodiacs according to their designated colour, where our expert polar Discovery Team will guide them, ensuring an unforgettable and unique adventure.

Antarctica

Tag 7

Various species of penguins can be found in Antarctic and the sub-Antarctic region, including Adélie, Chinstrap, Gentoo, and the very rare Emperor. Guided by the expert Discovery Team, you'll witness colonies up close; hear their calls and watch as they clumsily waddle along and interact with each other.

Whales are another majestic creature you may encounter, whether a minke, a humpback or an Orca. Watch them up close in a kayak or a Zodiac with the Discovery Team or observe them from the comfort of your ultra-luxury Discovery Yacht. However, you see them, it's a breathtaking experience.

Scenic Discovery:

Ask your expert Discovery Leader for photography tips so you can best capture the incredible wildlife and landscape around you.

Antarctica

Tag 8

From the moment it was discovered, Antarctica has held an irresistible allure for intrepid adventurers. The bold exploits of legendary explorers like Scott, Shackleton, and Amundsen have fueled its mystique, inspiring generations to venture into this untamed wilderness.

On this unforgettable day, you'll cruise past Antarctica's stunning icy mountains before stepping ashore by Zodiac to immerse yourself in the polar wilderness. With ample time to explore, this voyage ensures you experience the magic of this awe-inspiring landscape up close.

Back on board, enjoy a specialty tea or coffee in the Observation Lounge and take in the views through Swarovski telescopes.

Antarctica

Tag 9

In the untouched silence of this frozen wilderness, nature's rare sounds become unforgettable—whether it's the endearing chatter of penguins squabbling over prized pebbles or the thunderous roar of a glacier calving into the sea.

Towering glaciers provide one of the most awe-inspiring spectacles of your journey, with the chance to witness massive ice formations breaking away, creating brand-new icebergs before your eyes—a moment of pure wonder.

On board, explore some of your Discovery Yacht's indulgent spaces, from the welcoming Observation Lounge to the expansive Senses Spa#. Choose one of up to 10 world-class dining experiences on board tonight.

Antarctica

Tag 10

On your ultra-luxury yacht, every moment is crafted for both comfort and connection. Our inviting lounge provides the perfect setting to unwind and share unforgettable experiences with like-minded travellers.

For those craving adventure, the legendary Polar Plunge offers a thrilling rush—an unforgettable dive into icy waters, expertly coordinated by the Expedition Leader and Captain.

If you prefer to stay warm, find a prime viewing spot and enjoy the spectacle as fellow guests take the plunge, then join them for a toast with a glass of whiskey or a steaming cup of hot chocolate.

Scenic Discovery:

Glide past towering icebergs on a zodiac, step onto untouched white snow, and soar over vast mountain ranges. This is one of the world's few remaining pristine wildernesses, awaiting your exploration.

At Sea

Tag 11

As you cruise back across the Drake Passage toward South America, take this time to indulge in the ultra-luxury comforts of your Discovery Yacht and reflect on the awe-inspiring moments you've experienced.

Start your day with an invigorating workout in the state-of-the-art gym, a guided Pilates session, or a moment of relaxation in the PURE: Yoga & Pilates Studio.

As evening arrives, unwind in the elegant Scenic Lounge Bar, where you can toast to your expedition with a perfectly aged whiskey, a glass of fine wine, or a flute of French Champagne—all part of Scenic's truly all-inclusive ultra-luxury philosophy.

At Sea > Ushuaia

Tag 12

Make sure you book a treatment# at the tranquil Senses Spa before your expedition ends. Perhaps an ESPA facial or massage# or an alternative therapy including Ayuverdic massage or Japanese shiatsu. Afterwards, hold on to that feeling of calm for a while longer in the Zen-like space of the Vitality Lounge.

On your last night onboard for dinner choose from Koko's Asian Fusion Sushi @ Koko's (available by on board reservation) to watch the chefs at work or enjoy the spectacle of teppanyaki-style dining inspired by the markets of Asia at Night Market @ Koko's (available by on board reservation).

Ushuaia, Argentina > El Calafate

Tag 13

Your Expedition Voyage ends this morning in Ushuaia as you farewell your fellow travellers and crew. Disembark after breakfast to fly to El Calafate in Argentinian Patagonia. The town is named for the Calafate berry. Local legend says if you eat one of the small blue berries, you will return to Patagonia. The town is the gateway to the Los Glaciares National Park, renowned for its vast glacier fields and colourful glacial lakes surrounded by rugged mountain peaks. Meet your Tour Director and check in for a relaxing three-night stay.

El Calafate

Tag 14

Established in 1937, the World Heritage-listed Los Glaciares National Park is sure to be a highlight of your time in Patagonia. Cruise on the milky waters of Lake Argentino and get close to the impressive Perito Moreno Glacier, whose face rises an average of 74 metres above the surface of the water. Huge blocks of ice regularly calve from the glacier and crash into the icy waters below, making for an incredible sight accompanied by thundering crack. Then take a guided walk along the boardwalk for views across the top of the impressive 250 square kilometre glacier.

El Calafate

Tag 15

Discover the traditional way of life on an estancia (ranch) in the Argentine countryside, surrounded by glaciers, snowy peaks and stunning lakes. You will get a taste of authentic Patagonian culture and experience the frontier spirit that is still alive in these vast properties. Learn about the history of gauchos and explore the rugged landscapes on horseback.

El Calafate > Torres del Paine National Park, Chile

Tag 16

Drive to Patagonia and discover the ultimate gateway to adventure at your hotel, nestled at the entrance of the Torres del Paine National Park. During your exclusive four-night Special Stay, you'll have ample time to delve into the wonders of the park and immerse yourself in the charm of the nearby town of Puerto Natales, the main gateway to the breathtaking southern Chilean Fjords. Relax and unwind in the elegantly designed rooms and indulge in a plethora of complimentary excursions each day, complemented by refreshing beverages and delectable meals showcasing the finest Patagonian delicacies.

Torres del Paine National Park

Tag 17

Today, delve into one of the most spectacular national parks in the world. The Torres del Paine National Park is famous for its shimmering glaciers, turquoise lakes, dramatic peaks and golden pampas (grasslands) that are home to unique wildlife including the guanaco and the elusive puma. You will love spending your days exploring the wonders of this region.

Each evening, return to your luxurious lodge to relax in the lounge and take in the magnificent views while sharing stories with your fellow travellers.

Scenic Freechoice:

Over the next three days, there are several small group activities for you to choose from and enjoy at your own pace.

Torres del Paine National Park

Tag 18

Continue to explore Torres del Paine National Park and its spectacularly diverse landscapes. There are walking trails suitable for varying levels of fitness all throughout the park. Hike to the base of the rock towers that give the park their name or through the glorious scenery of the French Valley. Experienced trekkers can even explore the Grey Glacier on ice crampons. Or saddle up and discover the rolling pampas on horseback with an experienced guide.

Scenic Freechoice:

There are several small group activities for you to choose from and enjoy at your own pace.

Torres del Paine National Park

Today you could choose to discover the magical waterways of the Torres del Paine. Kayaking is popular along the vibrant blue lakes and calm rivers. Get an incredible view of the face of the Grey Glacier as you kayak along the River Grey. The Serrano River also offers excellent fly fishing for trout and salmon.

Tag 19

After each activity, return to your lodge for exceptional meals with cuisine inspired by the Patagonian environment, paired with South American wines.

Scenic Freechoice:

There are several small group activities for you to choose from and enjoy at your own pace.

Torres del Paine National Park > Santiago

Tag 20

Savour the last views of the massifs of Torres del Paine this morning before flying to the surprising and sophisticated Chilean capital of Santiago for an overnight stay. The capital of Chile is a vibrant city nestled in the Central Valley, at the foot of the majestic Andes Mountains. Known for its modern skyline set against stunning natural scenery, Santiago is a cultural hub with a rich history reflected in its neoclassical architecture, expansive museums and lively public squares.

Santiago, Chile

Bid farewell to your Tour Director and fellow guests as you transfer to Santiago airport, taking stories for life with you.

Tag 21

#Spa treatments at additional cost. +All drinks on board, including those stocked in your mini bar, are included, except for a very small number of rare, fine and vintage wines, Champagnes and spirits. Specialty restaurants require a reservation, enquire on board. ~Kayak and stand-up paddleboard not available in all locations. ^Flights on board our two helicopters and submersible experiences are at additional cost, subject to regulatory approval, availability, weight restrictions, medical approval and weather conditions.

The itinerary is a guide only and may be amended for operational reasons. As such Scenic cannot guarantee the voyage will operate unaltered from the itinerary stated above. Please refer to our terms and conditions for further information.

Im Preis inbegriffen

- Services und Annehmlichkeiten an Bord
- Maximal 229 Gäste an Bord (200 in den Polarregionen)
- Großzügige Suiten mit privater Veranda 2:1-Verhältnis
- Gäste- und Butlerservice für jeden Gast
- Zehn kulinarische Erlebnisse in neun Gourmet-Menues – von gemütlicher Atmosphäre bis zum eleganten Fine Dining
- Auswahl an Premium-Markengetränken mit über 101 Whiskysorten
- Scenic Discovery Ausflüge mit dem Zodiac
- Komplettes Kajakprogramm und Stand-up-Paddle-Boarding
- Kostenloser Expeditionsparaka und Wasserflasche sowie die Nutzung von speziellen Polartiefeln
- Interessantes Vortrags- und Bildungsprogramm mit Experten an Bord
- Spezielle Observation Lounge und Terrasse für die beste Aussicht
- Swarovski-Teleskope an Deck sowie Ferngläser in der Suite, damit Sie keinen aufregenden Momente verpassen
- Senses Spa** auf 551 m² mit Fitnesscenter, Yoga- und Pilatesstudio
- Außen-Vitalpools nachskandinavischem Vorbild
- Modernes Theater mittäglichem Unterhaltungs- und Bildungsangebot
- WLAN inclusive
- Inlandsflüge inkl. Gebühren
- Flughafentransfers
- Trinkgelder an Bord und an Land

Nicht im Preis inbegriffen

- Internationale Flüge, sofern nicht angegeben
- Reiseversicherungen
- Visa- oder Passgebühren (falls erforderlich)
- persönliche Ausgaben (Einkäufe, optionale Ausflüge)
- sonstige im Programm nicht genannte Leistungen

Ihr Schiff

Ihr Schiff ist die "Scenic Eclipse". Ausführlich stellen wir Ihnen dieses Schiff auf unseren Schiffseiten vor. [Ausführliche Informationen zu diesem Schiff.](#)

Passagiere
199

Bordsprachen


Eisklasse
PC-6

Special
Helikopter

