

IHRE REISE

# Antarktis & Patagonien Expedition ins ewige Eis- Kreuzfahrt und Landreise

Reisetermin

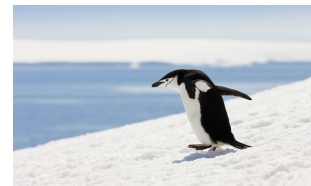
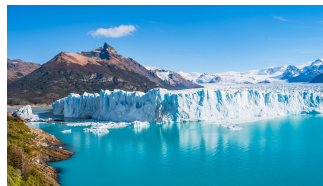
30.01.2027 - 18.02.2027

Reisedauer

20 Tage

Reederei / Schiff

Scenic Eclipse / SCENIC Luxury Cruises & Tours



Scenic Eclipse Veranda Suite A, Deck 8



Doppelbelegung



**€37.605**

pro Person

Einzelbelegung



**€62.435**

pro Person

Scenic Eclipse Veranda Suite B, Deck 7



Doppelbelegung



**€37.605**

pro Person

Einzelbelegung



**€62.435**

pro Person

Scenic Eclipse Deluxe Veranda Suite CA, Deck 6



*Doppelbelegung*

  
**€37.660**  
 pro Person

*Einzelbelegung*

  
**€62.545**  
 pro Person

Scenic Eclipse Deluxe Veranda Suite DB, Deck 5



*Doppelbelegung*

  
**€37.660**  
 pro Person

*Einzelbelegung*

  
**€62.545**  
 pro Person

Scenic Eclipse Deluxe Veranda Suite DA, Deck 5



*Doppelbelegung*

  
**€37.660**  
 pro Person

*Einzelbelegung*

  
**€62.545**  
 pro Person

Scenic Eclipse Deluxe Veranda Suite AA, Deck 7



*Doppelbelegung*

  
**€38.375**  
 pro Person

*Einzelbelegung*

  
**€63.975**  
 pro Person

Scenic Eclipse Deluxe Veranda Suite BA, Deck 7



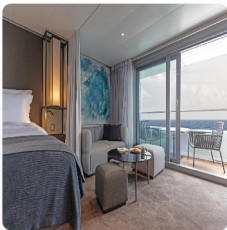
Doppelbelegung

  
**€38.375**  
 pro Person

Einzelbelegung

  
**€63.975**  
 pro Person

Scenic Eclipse Grand Deluxe Veranda Suite CD, Deck 6



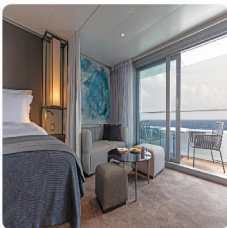
Doppelbelegung

  
**€38.595**  
 pro Person

Einzelbelegung

  
**€64.415**  
 pro Person

Scenic Eclipse Grand Deluxe Veranda Suite DD, Deck 5



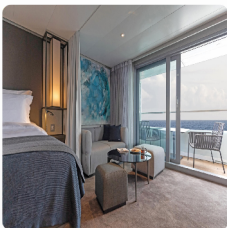
Doppelbelegung

  
**€38.595**  
 pro Person

Einzelbelegung

  
**€64.415**  
 pro Person

Scenic Eclipse Grand Deluxe Veranda Suite AD, Deck 8



Doppelbelegung

  
**€39.035**  
 pro Person

Einzelbelegung

  
**€65.295**  
 pro Person

Scenic Eclipse Grand Deluxe Veranda Suite BD, Deck 7



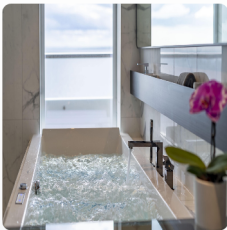
*Doppelbelegung*

  
**€39.035**  
 pro Person

*Einzelbelegung*

  
**€65.295**  
 pro Person

Scenic Eclipse Spa Suite S, Deck 8



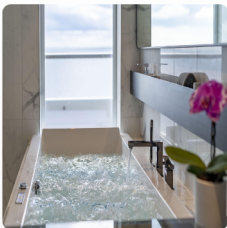
*Doppelbelegung*

  
**€42.555**  
 pro Person

*Einzelbelegung*

  
**€72.335**  
 pro Person

Scenic Eclipse Spa Suite SB, Deck 9



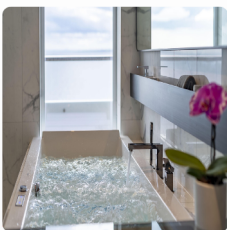
*Doppelbelegung*

  
**€42.775**  
 pro Person

*Einzelbelegung*

  
**€72.775**  
 pro Person

Scenic Eclipse Spa Suite SA, Deck 9



*Doppelbelegung*

  
**€42.775**  
 pro Person

*Einzelbelegung*

  
**€72.775**  
 pro Person



Scenic Eclipse Grand Panorama Suite GP, Deck 6



*Doppelbelegung*

  
**€ 57.845**  
 pro Person

*Einzelbelegung*

  
**€ 102.915**  
 pro Person

Scenic Eclipse Owners Penthouse Suite OP, Deck 9



*Doppelbelegung*

  
**€ 61.860**  
 pro Person

*Einzelbelegung*

  
**€ 110.945**  
 pro Person

Scenic Eclipse Veranda Suite C, Deck 6



*Doppelbelegung*

  
 Nicht verfügbar

*Einzelbelegung*

  
 Nicht verfügbar

Scenic Eclipse Veranda Suite D, Deck 5



*Doppelbelegung*

  
 Nicht verfügbar

*Einzelbelegung*

  
 Nicht verfügbar

Scenic Eclipse Panorama Suite P, Deck 8



Doppelbelegung



Nicht verfügbar

Einzelbelegung



Nicht verfügbar

Scenic Eclipse Two-Bedroom Penthouse Suite TP, Deck 9



Doppelbelegung



Nicht verfügbar

Einzelbelegung



Nicht verfügbar



## Santiago, Chile

Tag 1

Welcome to Santiago. The capital of Chile is a vibrant city nestled in the Central Valley, at the foot of the majestic Andes Mountains. Known for its modern skyline set against stunning natural scenery, Santiago is a cultural hub with a rich history reflected in its neoclassical architecture, expansive museums, and lively public squares. The city is also a gateway to Chile's varied landscapes, from the vineyards in its outskirts to nearby ski resorts and coastal towns. You'll be transferred to your elegant hotel for an overnight stay.

## Santiago > Torres del Paine National Park

Tag 2

Fly south to Patagonia and discover the ultimate gateway to adventure at your hotel, nestled at the entrance of the Torres del Paine National Park. With our exclusive four-night Special Stay package, you'll have ample time to delve into the wonders of the park and immerse yourself in the charm of the nearby town of Puerto Natales, the main gateway to the breathtaking southern Chilean Fjords. Relax and unwind in the elegantly designed rooms and indulge in a plethora of complimentary excursions each day, complemented by refreshing beverages and delectable meals showcasing the finest Patagonian delicacies.

## Torres del Paine National Park

Tag 3

Your exciting journey into one of the most spectacular national parks in the world begins today. The Torres del Paine National Park is famous for its shimmering glaciers, turquoise lakes, dramatic peaks, and golden pampas (grasslands) that are home to unique wildlife, including the guanaco and the elusive puma. You will love spending your days exploring the wonders of this region.

Each evening, return to your luxurious lodge to relax in the lounge and take in the magnificent views while sharing stories with your fellow travellers.

**Scenic Freechoice:** Over the next three days, there are several small group activities for you to choose from and enjoy at your own pace.

## Torres del Paine National Park

Tag 4

Continue to explore Torres del Paine National Park and its spectacularly diverse landscapes. There are walking trails suitable for varying levels of fitness all throughout the park. Hike to the base of the rock towers that give the park their name or through the glorious scenery of the French Valley. Experienced trekkers can even explore the Grey Glacier on ice crampons. Or saddle up and discover the rolling pampas on horseback with an experienced guide.

**Scenic Freechoice:** There are several small group activities for you to choose from and enjoy at your own pace.

## Torres del Paine National Park

Tag 5

Today you could choose to discover the magical waterways of the Torres del Paine. Kayaking is popular along the vibrant blue lakes and calm rivers. Get an incredible view of the face of the Grey Glacier as you kayak along the River Grey. The Serrano River also offers excellent fly fishing for trout and salmon.

After each activity, return to the lodge for exceptional meals with cuisine inspired by the Patagonian environment, paired with South American wines.

**Scenic Freechoice:** There are several small group activities for you to choose from and enjoy at your own pace.

## Torres del Paine National Park > El Calafate, Argentina

Tag 6

Farewell the Torres del Paine this morning as you drive across the border into Argentina and the town of El Calafate. It's named for the calafate berry and ancient local legend says that if you eat one of the small blue berries, you'll return to Patagonia. The town is the gateway to the Los Glaciares National Park, renowned for its vast glacier fields and colourful glacial lakes surrounded by rugged mountain peaks. Enjoy a relaxing three-night stay.

## El Calafate

Tag 7

Established in 1937, the World Heritage-listed Los Glaciares National Park is sure to be a highlight of your time in Patagonia. Cruise on the milky waters of Lake Argentino and get close to the impressive Perito Moreno Glacier, whose face rises an average of 74 metres above the surface of the water. Huge blocks of ice regularly calve from the glacier and crash into the icy waters below, making for an incredible sight accompanied by thundering crack. Then take a guided walk along the boardwalk for views across the top of the impressive 250 square kilometre glacier.

## El Calafate

Tag 8

Discover the traditional way of life on an estancia (ranch) in the Argentine countryside, surrounded by glaciers, snowy peaks and stunning lakes. You'll get a taste of authentic Patagonian culture and experience the frontier spirit that is still alive in these vast properties. Learn about the history of gauchos and explore the rugged landscapes on horseback.

Join your Tour Director and fellow guests for a delicious farewell dinner this evening.

## El Calafate > Ushuaia

Tag 9

Bid farewell to your Tour Director and fellow travellers as you transfer to the airport to continue your journey of wonder on board Scenic Eclipse II. Fly to Ushuaia, the main island of Tierra del Fuego and the southernmost city in the world. The Captain and crew will warmly greet you as you board your ultra-luxury Discovery Yacht.

Toast the start of your once-in-a-lifetime expedition as you depart South America and cruise through the calm and scenic Beagle Channel, named so for the ship that carried Charles Darwin on his five-year discovery journey. Admire the dramatic views of the Andean mountains from the comfort of your private verandah or from the Observation Deck with its commanding view of the bow.

## At sea

Tag 10

Wake up in your own time as we cruise across the Drake Passage, the infamous waterway that connects South America to Antarctica. Perhaps ask your butler for breakfast to be delivered to your spacious suite or meet fellow guests in the Yacht Club.

Today, join an introductory presentation about your polar expedition by the Polar Discovery Team in the state-of-the-art theatre. Feel the excitement building as they explain how your Zodiac and other Discovery Excursions will work in the coming days. The theatre is where you can watch talks, lectures, movies and documentaries during the day. At night, enjoy world-class productions from musical theatre and cabaret to pop music, dance and fun interactive game shows.

## At sea

Tag 11

Today you will enter Antarctic waters, an unpredictable but stunningly beautiful environment that always surprises. Put on your complimentary polar parka and head to the Observation Deck to spot icebergs for the first time – it's a feeling that will stay with you forever.

Watch out for whale blows in the distance and your expert polar Discovery team will be on hand to provide and answer any insightful information. Comprised of up to 20 members, this team of geologists, historians, ornithologists, marine biologists, and glaciologists is at the heart of your Antarctic Voyage.

## Antarctica

Tag 12

Slide open the floor-to-ceiling doors of your verandah suite to see icebergs sculpted by nature and glacial mountains rising thousands of metres from the ocean. Antarctica is a birdwatcher's paradise, with more than 40 different species, so keep your eyes peeled for wandering albatrosses, which have the largest wingspan of any flying bird, as well as shearwaters, giant petrels and more.

Due to the extraordinary nature of the region, excursions throughout your Expedition Voyage are dependent on the ice and weather conditions. Your experienced Captain and specialist Discovery Team, who have made countless journeys to Antarctica, will use their expertise to design your voyage from day to day, making the most of 18–20 hours of daylight.

**Scenic Discovery:** Daily experiences may include cruising on Zodiacs, stepping ashore to view vast penguin rookeries or historic huts, and kayaking or paddle boarding around icebergs. Wherever your voyage takes you, you will have countless “pinch me” moments.

## Antarctica

Tag 13

Portal Point^^ – a former British refuge hut – may be a potential landing site during your voyage.

Or you may visit Deception Island^^ as part of your itinerary. Nestled in the South Shetland Islands archipelago, it is one of the only places in the world that ships can sail directly into the centre of a submerged caldera of an active volcano. With her world-class design and state-of-the-art technology, Scenic Eclipse can sail through a rocky gap into the horseshoe-shaped harbour. The island is also home to a few small scientific outposts and hundreds of thousands of chinstrap penguins.

Tonight could be the night you enjoy Sushi^ @ Koko's with your new friends. Stay up late in the bar or retire to the library for a moment of blissful solitude before bed.

## Antarctica

Tag 14

Various species of penguins can be found in Antarctic and the sub-Antarctic region, with around 12 million penguins living on the Peninsula, including Adélie, Chinstrap, Gentoo, and the very rare Emperor penguins. Guided by the expert Polar Discovery Team, you'll witness colonies up close; hear their mighty calls and watch as they clumsily waddle along and interact with each other.

Whales are another majestic creature you may encounter, whether a minke, a humpback or an Orca. Watch them from the comfort of your ultra-luxury Discovery Yacht, in a Zodiac with an experienced Polar Discovery Team member, or from their level in a kayak or stand-up paddleboard – a breathtaking experience.

**Scenic Discovery:** When enjoying daily Scenic Discovery excursions, ask for your expert Discovery Leader for photography tips and guidance on how to spot the wildlife around you. They will help you immortalise these incredible moments while cruising on the Zodiacs, kayaking and stand-up paddleboarding around impressive ice formations.

## Antarctica

Tag 15

Lemaire Channel^^, renowned for its picturesque views and often referred to as 'Kodak Alley', could be our next exciting destination. If during your voyage the Scenic Eclipse weaves through this channel, make sure you set your alarm and embrace the cool air from the Observation Terrace. Pass through the 11-kilometre-long channel, just 700 metres wide at its narrowest point, and be amazed at the dramatic rocky mountains and glowing blue icebergs so close to the ship.

In between Scenic Discovery experiences, enjoy a specialty tea or coffee in the Observation Lounge and watch the world float by through Swarovski telescopes.

## Antarctica

Tag 16

In the distance on a clear day you can see Mount Francis^^ standing tall as Anvers Island's highest peak, showcasing the rugged beauty of Antarctica. Every day is unique, you might get the chance to hike or spend time on the pebbled beach, enjoying the view surrounded by curious penguins.

Back on board, explore some of Scenic Eclipse's indulgent spaces, from the welcoming Observation Lounge to the expansive Senses Spa#. Soothe your muscles in the sauna or heated therapy lounge, join a yoga or Pilates class. Choose one of up to 10 world-class dining experiences on board tonight.

## Antarctica

Tag 17

Be sure to pack your swimming suit because you could be going for a swim today. For many, the polar plunge is a once-in-a-lifetime opportunity and a rite of passage on an expedition to Antarctica. Once throughout your voyage, Scenic Eclipse will stop, and the team will set up the marina ready for the brave people who want to jump into the freezing Antarctic waters.

Excitement will spread through the Discovery Yacht, and you will start hearing the contagious nervous laughter. As you stand on the edge, ready to jump, you will feel the adrenaline rush while you second-guess whether this is a good idea. When you jump, the moment before you hit the water will feel like it goes forever, but soon, an invigorating, exciting, and surprisingly refreshing sensation will take over.

If you choose to skip the polar plunge, make sure you find a good viewing location as you feel the chills of everyone coming out of the water. Join them for a cup of hot chocolate or toast with a glass of whiskey.

## At sea

Tag 18

Cruising the Drake Passage back to the tip of South America, there is plenty of time to indulge in the ultra-luxury of your Discovery Yacht and reflect on the magic moments you've experienced in the Southern Ocean.

Freshly squeezed juice, steaming barista-made coffee or tea delivered to your door by the butler will help start your day. Head to the gym for an invigorating workout or the studio for a Pilates class, some guided stretching or aerial yoga.

In the evening, settle in at the spacious Scenic Lounge Bar to enjoy your beverage of choice, whether it be aged whiskey or a glass of wine. With Scenic's signature all-inclusive ultra-luxury philosophy, indulge in top shelf spirits, over 130 whiskeys, a premium wine list and French champagne.

## At sea > Ushuaia

Tag 19

Have you visited the bridge yet? Thanks to the Captain's open bridge policy, guests are welcome any time to learn more about the technical abilities of The World's First Discovery Yacht and see it in full operation. The bridge is also one of the best viewing areas on the ship.

Make sure you book a treatment# at the tranquil Senses Spa before your Discovery expedition ends. Perhaps an ESPA facial or massage# or an alternative therapy including Ayurvedic massage or Japanese shiatsu. Afterwards, hold on to that feeling of calm for a while longer in the Zen-like space of the Vitality Lounge.

## Ushuaia, Argentina > Buenos Aires

Your voyage ends this morning as you farewell the crew and fellow guests. Disembark after breakfast to fly to Buenos Aires, taking away memories of a truly unforgettable experience.

Please book your flight to depart out of Buenos Aires after 09:30 PM.

Tag 20

The itinerary is a guide only and may be amended for operational reasons. As such Scenic cannot guarantee the voyage will operate unaltered from the itinerary stated above. Please refer to our terms and conditions for further information.

^^Subject to weather and operational conditions. Sightings cannot be guaranteed.

^Reservation required

^Flights on board our two helicopters and submersible experiences are at additional cost, subject to regulatory approval, availability, weight restrictions, medical approval and weather, ice and tidal conditions. #Spa treatments at additional cost. +All drinks on board, including those stocked in your mini bar, are included, except for a very small number of rare, fine and vintage wines, Champagnes and spirits.



#### **Im Preis inbegriffen**

- Services und Annehmlichkeiten an Bord
- Maximal 229 Gäste an Bord (200 in den Polarregionen)
- Großzügige Suiten mit privater Veranda 2:1-Verhältnis
- Gäste- und Butlerservice für jeden Gast
- Zehn kulinarische Erlebnisse in neun Gourmet-Menues – von gemütlicher Atmosphäre bis zum eleganten Fine Dining
- Auswahl an Premium-Markengetränken mit über 101 Whiskysorten
- Scenic Discovery Ausflüge mit dem Zodiac
- Komplettes Kajakprogramm und Stand-up-Paddle-Boarding
- Kostenloser Expeditionsarka und Wasserflasche sowie die Nutzung von speziellen Polartiefeln
- Interessantes Vortrags- und Bildungsprogramm mit Experten an Bord
- Spezielle Observation Lounge und Terrasse für die beste Aussicht
- Swarovski-Teleskope an Deck sowie Ferngläser in der Suite, damit Sie keinen aufregenden Momente verpassen
- Senses Spa\*\* auf 551 m<sup>2</sup> mit Fitnesscenter, Yoga- und Pilatesstudio
- Außen-Vitalpools nachskandinavischem Vorbild
- Modernes Theater mittäglichem Unterhaltungs- und Bildungsangebot
- WLAN inclusive
- Inlandsflüge inkl. Gebühren
- Flughafentransfers
- Trinkgelder an Bord und an Land

---

#### **Nicht im Preis inbegriffen**

- Internationale Flüge, sofern nicht angegeben
- Reiseversicherungen
- Visa- oder Passgebühren (falls erforderlich)
- persönliche Ausgaben (Einkäufe, optionale Ausflüge)
- sonstige im Programm nicht genannte Leistungen

## *Ihr Schiff*

Ihr Schiff ist die "Scenic Eclipse". Ausführlich stellen wir Ihnen dieses Schiff auf unseren Schiffseiten vor. [Ausführliche Informationen](#) zu diesem Schiff.

Passagiere

199

Bordsprachen



Eisklasse

PC-6

Special

Helikopter

