

IHRE REISE

Auf den Spuren der Wikinger

Reisetermin
 09.06.2025 - 18.06.2025

Reisedauer
 10 Tage

Reederei / Schiff
 Silver Wind / Silversea



Vista Suite



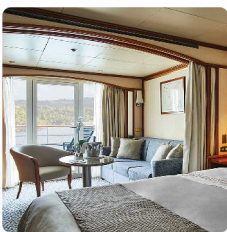
Doppelbelegung


€7.400
 pro Person

Einzelbelegung


€14.800
 pro Person

Deluxe Veranda Suite



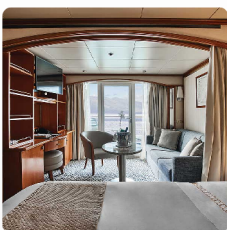
Doppelbelegung


€8.800
 pro Person

Einzelbelegung


€17.600
 pro Person

Classic Veranda Suite



Doppelbelegung


 Nicht verfügbar

Einzelbelegung


 Nicht verfügbar

Owner's Suite



Doppelbelegung



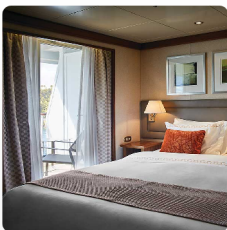
Nicht verfügbar

Einzelbelegung



Nicht verfügbar

Medallion Suite



Doppelbelegung



Nicht verfügbar

Einzelbelegung



Nicht verfügbar

Royal Suite



Doppelbelegung



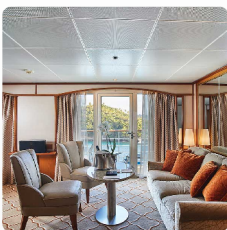
Nicht verfügbar

Einzelbelegung



Nicht verfügbar

Silver Suite



Doppelbelegung



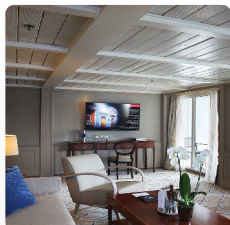
Nicht verfügbar

Einzelbelegung



Nicht verfügbar

Grand Suite



Doppelbelegung

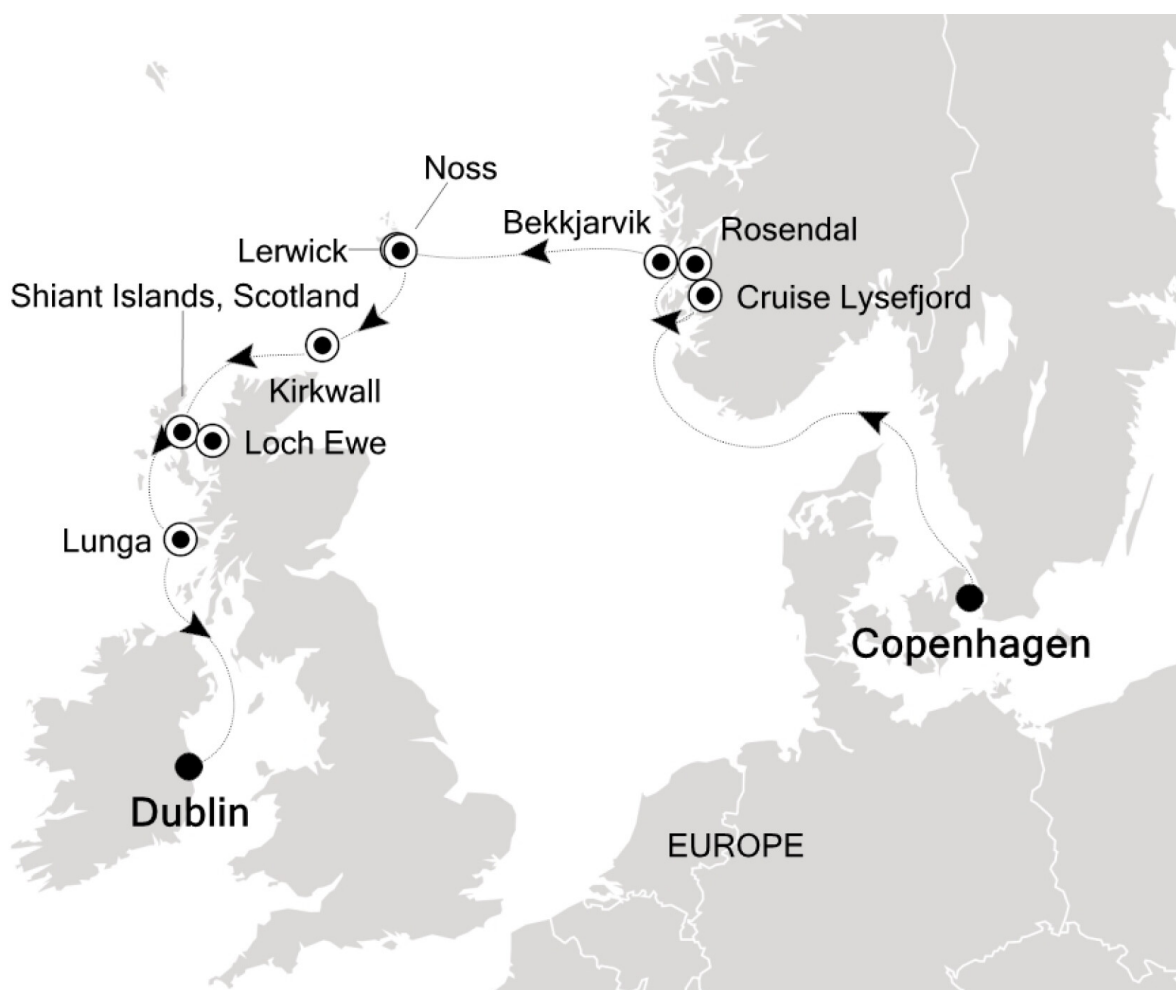


Nicht verfügbar

Einzelbelegung



Nicht verfügbar



Copenhagen
Mo., 9. Juni
Ankunft 07:00

Tag 1

Effortlessly cool and down to earth, Copenhagen is a contemporary, clean and classy highlight of Scandinavia. A city built to be liveable, Copenhagen has refused to compromise, resulting in a forward-thinking metropolis that's green and clean. Swim in the waters of Havnebadet Islands during summer, or shelter from winter's bite by snuggling in beside a roaring open fire during winter. You can even hop on a train to Sweden, traversing the famous span of a Nordic Noir star - the Öresund Bridge. It takes just a touch over half an hour to step off the train in Malmö. There's only one way to truly explore Copenhagen and that's on two wheels. Easy bike hire schemes will get you moving across this flat city, designed with bikes at the forefront of the mind. Choose a model with electronic assistance to take the strain out of any journey, giving you the freedom to whizz around and explore the modern angular architecture of the centre, and the pastoral colours of Nyhavn waterfront. Head out to the Little Mermaid statue, inspired by Hans Christian Andersen's fairy tale - the strikingly-restrained statue is the perfect landmark for Copenhagen; unshowy, self-assured and utterly irresistible. The Danish concept of hygge is very much alive here, and you'll feel that warm cosy feeling as you visit cafes illuminated by the warm glow of hanging filament bulbs, and stuffed to the brim with thick, dusty books. Home to mega-brewer Carlsberg, Copenhagen is also a city for hop enthusiasts, and there is a thriving craft brewing scene to sample. Danish Smørrebrød sandwiches are a must try, or for something a little more substantial, settle in for a culinary voyage and try a taster menu – the city's restaurants are littered with Michelin stars.

Day at sea
Di., 10. Juni
Ankunft 00:00

Tag 2

Days at sea are the perfect opportunity to relax unwind and catch up with what you've been meaning to do. So whether that is going to the gym, visiting the spa, whale watching, catching up on your reading or simply topping up your tan these blue sea days are the perfect balance to busy days spent exploring shore side.

Cruise Lysefjord
Mi., 11. Juni
Ankunft 12:30

Tag 3

East of Stavanger, Lysefjord is the southernmost of Norway's biggest fjords. The ship will enter the narrow 42 kilometer long fjord between Forsand and Oanes and will then pass under Lysefjordbrua, the only bridge connecting the northern and southern sides. Bergsholmen and the adjacent islet with Forsand lighthouse are the only obstacles in the fjord which in some parts is as deep as the mountain cliffs on its side. The light granitic rocks on both sides of the fjord are said to have given it its name "Light Fjord". The fjord's cliffs, waterfalls and hardy trees are reflected in the calm waters, yet while cruising through the fjord, hardly any houses will be seen, as the shore provides only very limited farm area and the cliffs are just too steep. Two of Norway's famous viewpoints will be passed: on Lysefjord's northern shore is the 604 meters vertical cliff of Preikestollen, while the southern shore shows Kjerak, a mountain with a height of 1,100 meters. Kjerak has the famous Kjerakbolten, a boulder stuck 894 meters above sea level in a mountain crevasse. Before reaching Kjerak and eventually the end at Lysebotn, an old hydroelectric plant is passed at Florli –its main attraction today is to climb one of the longest wooden staircases in the world with more than 4400 steps running parallel to the tubes which formerly brought down the water.

Rosendal
 Do., 12. Juni
 Ankunft 07:00

Tag 4

Rosendal, with its mountains and waterfalls, is one of Norway's more romantic villages. Cut off from the rest of the world by high mountains and the Folgefonna National Park, and home to just 800 year round inhabitants, to say the village is in a little world of its own is no exaggeration! While Rosendal might lack for urban excitement, you certainly couldn't want to find a more beautiful setting. Soaring mountains peaks, narrow winding fjords, impressive waterfalls and the third largest glacier in Norway are all par for the norm here, as are breathtaking glacier views and some of the freshest air you'll ever experience. The village was famously a wedding present to Ludvig Holgersen Rosenkrantz's daughter in 1658. Rosenkrantz was the wealthiest man in the country at the time, owning over 500 farms all over western Norway. The great manor house built shortly after the wedding still stands, along with beautifully maintained gardens that were added 300 years later. The house is a wonderful reflection of the different periods styles of the various illustrious owners and restoration has been painstakingly carried out. The oldest rooms are still decorated as they were in the early 19th century while the library is the only 17th century room in Norway kept in its entirety, complete with the original rich French tapestry from the 1660's. No visit to this little village would be complete without a taste of local life. Pop into a tea shop for a traditional griddlecake, enjoyed amid splendid waterfront views.

Bekkjarvik
 Fr., 13. Juni
 Ankunft 06:30

Tag 5

Sail back through time to the quaint charm of Bekkjarvik, a former fishing village home to an inn worthy of royalty. Nestled among picturesque fjords and idyllic islands, historical warehouses, quays, and factories have been sensitively restored and repurposed, creating a town of nostalgic flair and a sense of living history. Located on the island of Selbjørn in the Austevoll archipelago, just 25 miles south of Bergen, Bekkjarvik boasts beautiful scenery and royal lodgings. The renowned guesthouse, commissioned by King Christian IV of Denmark, was initially intended to provide a suitable rest stop for travelers after a half day of sailing along the splintered coastline. The immaculate, white-timbered walls of Bekkjarvik Gjestgiveri have warmly welcomed sea-faring travelers since the 17th century, offering guests refined gastronomic experiences with high-quality ingredients sourced from across the region. Delve further into the fractured archipelago by cycling along bridges that loop and weave along stunning cycle tracks, or relax and watch as pleasure boats glide peacefully through the waters. For those who prefer hiking, a steep stone staircase leads to breathtaking panoramic views of the fjords and archipelago unfurling before you.

Lerwick, Shetland Islands, Scotland
 Sa., 14. Juni
 Ankunft 07:30

Tag 6

Adrift between the Scottish and Norwegian coasts the craggy Shetland Islands form the most northerly point of the British Isles. Sprawling across 100 islands connected by sandy bridges and crisscrossing ferries explore the highlights of this scenic archipelago outpost. Look out over dramatic coastline from atmospheric Iron Age towers. Sweeping windswept beaches and wisps of sand connect islands and rugged cliffs - stand back as the sounds of the waves smashing against the shore and calling gulls fills the air. The islands are also home to some of the most adorable four-legged creatures you'll ever meet the diminutive and wavy-fringed Shetland Ponies who roam the hills and reach a maximum size of 42 inches. Don't be fooled though they are amongst the strongest and toughest of all breeds. Their existence here points to Viking history as local horses bred with ponies brought ashore by Norse settlers creating the lovable crossbreed that is an icon of these islands today. The towering Broch of Mousa is perhaps Europe's best-preserved Iron Age building - and one of the Shetland's finest brochs - a series of round stone towers believed to have been constructed around 100 BC. Seals and birdlife ensure that the isolated islands are always well-populated with life - and you can embark on hikes to discover their coastal homes. Lerwick is the islands' capital and there's a charming welcome on offer as you arrive before the waterfront of stone buildings which cascade down to the shore.

Noss, Scotland
 Sa., 14. Juni
 Ankunft 14:30

Tag 6

Exploring the sandstone cliff faces of the Isle of Noss will reveal ledges loaded with gannets puffins guillemots shags kittiwakes Razorbills fulmars and Great Skuas. The island was recognized as a National Nature Reserve in 1955 and has one of Europe's largest and most diverse seabird colonies. Sheep have grazed the inland hillsides of Noss since the late 1800s and early 1900s when around twenty people lived on the island to manage the sheep farm. Along with the sheep shaggy Shetland ponies graze the windblown slopes of Noss.

Kirkwall, Orkney Islands, Scotland
 So., 15. Juni
 Ankunft 08:00

Tag 7

Scattered just off the northern tip of Scotland Kirkwall is the capital of the Orkney Islands - a scenic archipelago of fascinating dual heritage. The Viking influence is deep while a prehistoric past and World War history adds to the endless stories that these dramatic islands have to tell. Sparse and beautiful let the sweeping seascapes of frothing waves and dance of the northern lights enchant you as you explore. Windswept beaches are inhabited by whooping swans while grassy cliffs hide puffins amid their wavy embrace. Sea caves and crumbling castles - and the dramatic meeting of the North Sea and the Atlantic Ocean add to the romantic beauty of these lands which may be physically close to the UK but feel an entire world away. The sandstone St. Magnus Cathedral is the centrepiece of Orkney's main town - a place of winding lanes and atmospheric walks - and Britain's northernmost cathedral is a masterpiece that took 300 years to complete. Started in 1137 the beautiful cathedral is adorned with mesmerising stain-glass windows and has been evocatively named as the Light of the North. Look down over the ruined Bishop's and Earl's Palaces nearby from the tip of the cathedral's tower. Or test out the islands' history-rich distilleries which produce smokey single malts - said to be the best in the world. You can also venture out to Europe's best-preserved Stone Age Village at the extraordinary World Heritage Site of Skara Brae which offers an unparalleled vision into prehistoric life.

Shiant Islands, Scotland
 Mo., 16. Juni
 Ankunft 06:30

Tag 8

Cliffs of tall hexagonal columns create a sensational landscape at the Shiant Islands, especially when viewed from the sea. The cliffs of six-sided rock columns look like the cross-section of an enormous honeycomb. The rock formations were formed when molten volcanic magma cooled very slowly underground. Millions of years of erosion has exposed the six-sided columns to the sea, and to us. The tallest of these formations is 120 metres (390 feet) high. During spring and summer, flights of seabirds near the Shiant Islands catch the eye. Many long-winged seabirds wheel and soar gracefully. Others are more shaped for underwater swimming and fly in direct lines, beating stubby wings to resemble flying potatoes. Some birds nest in burrows while others, like Black-legged Kittiwakes, nest on cliffs. Rather than build nests, guillemots lay eggs on bare rock ledges. The pointed shape of the eggs ensures they roll in a tight circle, not off the ledge to the sea below. The Shiant Islands are part of the Outer Hebrides and located between the Isles of Lewis and Skye. Historically, they have supported families of sheep grazers who could tolerate a lonely island outpost. The Shiants were known as the last place in Britain where the Black Rat occurred in substantial numbers. Originally introduced to Britain from Asia in Roman times these rodents caused problems, eating eggs and chicks of seabirds. A successful eradication program eliminated the rats in 2016, giving the seabird colonies well-earned peace.

Loch Ewe
 Mo., 16. Juni
 Ankunft 13:30

Tag 8

Loch Ewe is the only north facing Loch in Scotland, with an interesting history and a fine scenic landscape this area has a true natural beauty. During WW2 the loch was a convoy collecting point with a strong naval presence; it was therefore protected by light and heavy aircraft guns, a boom net and mine defence system helped to shield this precious settlement. Loch Ewe is a natural deep water sea loch that links to the Atlantic Ocean with a relatively small mouth giving the loch a vast amount of protection from the weather. Nearby Inver ewe gardens thrive on the warm currents of the North Atlantic Drift to create an oasis of colour and fertility where exotic plants from many countries flourish on latitude more northerly than Moscow, giving an almost continual display of colour throughout the year.

Lunga
 Di., 17. Juni
 Ankunft 07:00

Tag 9

The stunning Isle of Lunga is the largest island in the Treshnish archipelago. With volcanic origin the isle was populated until the 19th Century and remains of black houses can be seen around this magnificent coastal jewel. Abundant plant life and exotic birdlife are now the main inhabitants of the area. Fortunate visitors view the magnificent array of birds especially the great puffins that breed on the islands plateau. One can sit within just a few feet away without disturbing the avian ambassador's peace. The 81 hectare island is home to many rare and endangered plants such as primroses and orchids. Views over the landscape and across the ocean can be seen from the 300 foot high cliffs.

Dublin
Mi., 18. Juni
Ankunft 07:00

Tag 10

Atmospheric cobbled streets with buskers scraping fiddles and characterful pubs inviting passersby inside is Dublin in a snapshot. Horse-drawn carriages plod along cobbled centuries-old streets blending with an easy-going cosmopolitan outlook. Known for its fun-filled gathering of pubs any excuse works to enjoy a celebratory toast and chat among good company. Home to perhaps the world's most famous beer - slurp perfect pourings of thick dark Guinness - cranked out for the city's thirsty punters. Learn more of the humble pint's journey at the Guinness Storehouse. Dublin has come along way since the Vikings established a trading port here back in the 9th Century. In the time since the city became the British Empire's defacto second city and the Georgian imprint still adds oodles of historic character. Learn of 1916's Easter Uprising when the Irish rebelled and established their independence here as you visit the infamous haunting Kilmainham Gaol. The uprising's leaders were tried and executed in these dark confines. Dublin's St. Patrick's Cathedral has immense history below its steep spire which dates back to 1191. There's rich literary heritage to leaf through too and the city's streets were rendered vividly in James Joyce's classic Ulysses. The Museum of Literature celebrates the full scope of Dublin's lyrical talents. Trinity College also has a prestigious roll-call of alumni - visit to see the Book of Kells a beautifully illustrated bible of the medieval era.

Im Preis inbegriffen

- internationale Flüge
- Transfers
- 1 Hotelübernachtung vor der Kreuzfahrt und 1 Tageshotel nach der Kreuzfahrt, falls erforderlich
- Inlandsflüge wenn notwendig
- Geführte Zodiac-, Land- und Seetouren sowie Aktivitäten unter der Leitung des Expeditions-Teams
- Parka
- Fachkundige Lektoren und/oder Kreuzfahrtberater
- Geräumige Suiten
- Persönlicher Butler-Service für alle Suiten
- Unbegrenzt kostenloses WiFi
- Individueller Service – nahezu ein Crewmitglied pro Gast
- Auswahl an Restaurants, abwechslungsreiche Küche, freie Platzwahl
- Getränke in der Suite und auf dem gesamten Schiff – Champagner, auserlesene Weine und hochwertige Spirituosen
- Essen in der Suite und 24-Stunden Zimmerservice
- Gehobene Unterhaltung an Bord
- Sämtliche Trinkgelder an Bord

Nicht im Preis inbegriffen

- Transfers
- Reiseversicherungen
- Visa- oder Passgebühren (falls erforderlich)
- persönliche Ausgaben (Einkäufe, optionale Ausflüge)
- sonstige im Programm nicht genannte Leistungen

Ihr Schiff

Ihr Schiff ist die "Silver Wind". Ausführlich stellen wir Ihnen dieses Schiff auf unseren Schiffseiten vor. [Ausführliche Informationen](#) zu diesem Schiff.

Passagiere

254

Bordsprachen



Eisklasse

1C

Special

All-Inclusive

