

IHRE REISE

Ultimative Reise: Südamerika & Entdeckung der Antarktis

Reisetermin

03.11.2027 - 11.12.2027

Reisedauer

39 Tage

Reederei / Schiff

Scenic Eclipse II / SCENIC Luxury Cruises & Tours



Scenic Eclipse II Veranda Suite C, Deck 6



Doppelbelegung



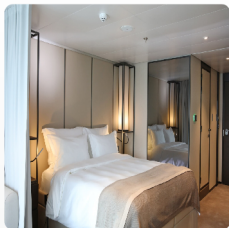
Nicht verfügbar

Einzelbelegung



Nicht verfügbar

Scenic Eclipse II Veranda Suite A, Deck 8



Doppelbelegung



Nicht verfügbar

Einzelbelegung



Nicht verfügbar

Scenic Eclipse II Deluxe Veranda Suite CA, Deck 6



Doppelbelegung



Nicht verfügbar

Einzelbelegung



Nicht verfügbar

Scenic Eclipse II Deluxe Veranda Suite AA, Deck 7



Doppelbelegung



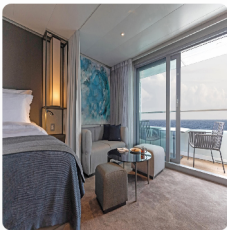
Nicht verfügbar

Einzelbelegung



Nicht verfügbar

Scenic Eclipse II Grand Deluxe Veranda Suite CD, Deck 6



Doppelbelegung



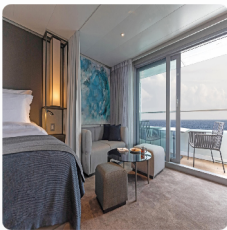
Nicht verfügbar

Einzelbelegung



Nicht verfügbar

Scenic Eclipse II Grand Deluxe Veranda Suite AD, Deck 8



Doppelbelegung



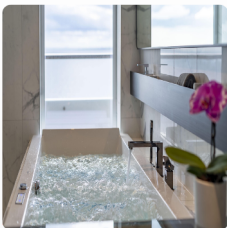
Nicht verfügbar

Einzelbelegung



Nicht verfügbar

Scenic Eclipse II Spa Suite S, Deck 8



Doppelbelegung



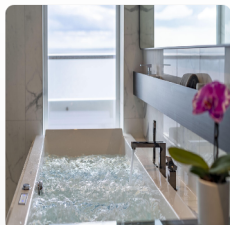
Nicht verfügbar

Einzelbelegung



Nicht verfügbar

Scenic Eclipse II Spa Suite SA, Deck 9



Doppelbelegung



Nicht verfügbar

Einzelbelegung



Nicht verfügbar

Scenic Eclipse II Panorama Suite P, Deck 8



Doppelbelegung



Nicht verfügbar

Einzelbelegung



Nicht verfügbar

Scenic Eclipse II Grand Panorama Suite GP, Deck 6



Doppelbelegung



Nicht verfügbar

Einzelbelegung



Nicht verfügbar

Scenic Eclipse II Owners Penthouse Suite OP, Deck 9



Doppelbelegung



Nicht verfügbar

Einzelbelegung



Nicht verfügbar

Scenic Eclipse II Two-Bedroom Penthouse Suite TP, Deck 9



Doppelbelegung



Nicht verfügbar

Einzelbelegung



Nicht verfügbar

Scenic Eclipse II Deluxe Veranda Suite DA, Deck 5



Doppelbelegung



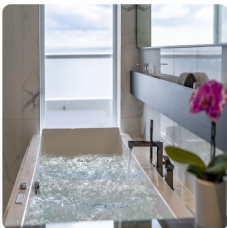
Nicht verfügbar

Einzelbelegung



Nicht verfügbar

Scenic Eclipse II Spa Suite SB, Deck 9



Doppelbelegung



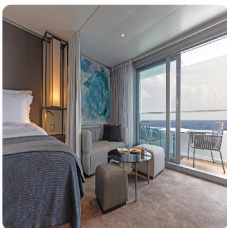
Nicht verfügbar

Einzelbelegung



Nicht verfügbar

Scenic Eclipse II Grand Deluxe Veranda Suite DD, Deck 5



Doppelbelegung



Nicht verfügbar

Einzelbelegung



Nicht verfügbar

Scenic Eclipse II Deluxe Veranda Suite DB, Deck 5



Doppelbelegung



Nicht verfügbar

Einzelbelegung



Nicht verfügbar

Scenic Eclipse II Veranda Suite D, Deck 5



Doppelbelegung



Nicht verfügbar

Einzelbelegung



Nicht verfügbar

Scenic Eclipse II Deluxe Veranda Suite BA, Deck 7



Doppelbelegung



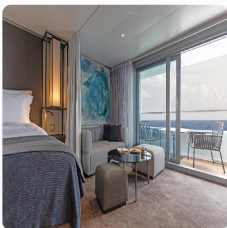
Nicht verfügbar

Einzelbelegung



Nicht verfügbar

Scenic Eclipse II Grand Deluxe Veranda Suite BD, Deck 7



Doppelbelegung



Nicht verfügbar

Einzelbelegung



Nicht verfügbar

Scenic Eclipse II Veranda Suite B, Deck 7



Doppelbelegung



Nicht verfügbar

Einzelbelegung



Nicht verfügbar



Rio de Janeiro, Brazil

Welcome to Rio de Janeiro, one of the loveliest and most cosmopolitan cities in the world.

Tag 1

The crew will greet you personally with a warm welcome and a sparkling glass of champagne as you step aboard your spectacular home on the water for the next 12 days. Meet fellow guests and acquaint yourself with your Discovery Yacht's luxuriously appointed offerings.

Please book your flight to arrive into Rio de Janeiro prior to 02:00 PM.

Rio de Janeiro, Brazil

Tag 2

Nestled between lush islands and iconic peaks like Sugarloaf Mountain, Rio de Janeiro's vibrant port blends rich history with breathtaking beauty. Colourful neighbourhoods tumble toward white-sand beaches, all under the watchful gaze of Christ the Redeemer. Wake up early to experience Scenic Eclipse II's majestic arrival into Rio's harbour, passing the iconic statue and making port in the city's bustling heart. Experience the magic of Rio with an unforgettable overnight stay.

Buzios, Brazil

Tag 3

Brigitte Bardot was one of the first to discover the charms of Búzios. The iconic French actor visited this small fishing village in the 1960s, catapulting it onto the global stage where it would eventually become known as the St Tropez of Brazil. Glorious beaches and waving palm trees sit alongside luxury hotels, ritzy boutiques, fine restaurants and chic bars. Búzios is a charming grouping of three settlements on a small peninsula, each with its own unique allure.

Abraão, Ilha Grande, Brazil

Tag 4

This island is a natural paradise and most of it is cloaked in lush greenery. Stroll under magical canopies with the sounds of birdcall as your soundtrack as you look for wildlife peeking from the forest. Ilha Grande is completely car-free, making this wanderer's dream an exceptionally peaceful stay. Swimming and snorkelling are a must if you can stand to leave the comfort of your beach towel. With our late-night departure, a sandy sunset will have you sleeping sweet dreams.

Paraty, Brazil

Tag 5

Like something from a picture book, Paraty's cobbled streets and chalk-white buildings will have you grabbing your camera. After breakfast on board, venture into the town's friendly streets to begin your day.

Buildings accented with bright swathes of primary colours, setting off the steeply rising mountains, veiled in emerald leaf cover. There are no cars in the historic town centre, though you may hear the clip-clopping of a horse drawn carriage as you wander the colonial streets. Keep your eyes open for the iconic birds that make this area their home, including jocular toucans, kaleidoscopic parrots and flitting hummingbirds.

Ilhabela , Brazil

Tag 6

The name of this archipelago is Portuguese for 'Beautiful Island' and today you'll quickly understand why. After getting photos from your favourite spot on the yacht, disembark for the wonder of this magical destination where craggy volcanic peaks emerge from heavily forested equatorial jungles. It's home to a multitude of waterfalls, flourishing plant species and breathtaking beaches. Watch for wildlife sheltered in this World Heritage-listed biosphere reserve, including capuchin monkeys as they perform their gymnastics in the verdant canopy.

Back on board your Discovery Yacht you may like to book in for an indulgent treatment# in the Senses Spa.

São Francisco do Sul, Brazil

Tag 7

Founded in 1658, São Francisco do Sul is Brazil's third oldest settlement. History lives on in charming cobblestone streets and colonial buildings, many of which are listed on the National Historic Registry. As you sail toward the island, enjoy some of the best views of the town, perhaps from the cosy cocoon of your private cabana, overlooking pastel homes with arched windows and elegant balconies.

At Sea

Tag 8

After a languid sleep-in and a luxurious in-suite breakfast, start the day with a yoga or Pilates class. Afterwards, relax in the sauna or jump into the temperature-controlled plunge pool. The Azure Bar and Café is ideal for casual but upscale dining and affords you a sea view unlike any other. Sip a custom cocktail in one of the eight all-inclusive bars, including the Scenic Lounge Bar, where more than 130 whiskey varieties are available.

At Sea

- Tag 9 A day at sea is always a treat when all-inclusive activities abound. Enhance your culinary skills at Scenic Épicure under the expert tutelage of Scenic's masterclass instructors. If you're looking for some quiet reflection or a bit of respite, nestle into one of the cabanas on Deck 10. With a freshly squeezed juice or a refreshing spritz depending on your mood, enjoy the expansive sea views with your complimentary binoculars found in your suite.

Punta del Este, Uruguay

- Tag 10 Since the early 20th century, this sun-drenched peninsula has enjoyed a reputation as a favourite holiday destination for the global elite. Referred to as the 'Monaco of the South', Punta del Este's iconic cityscape and incredible beaches attract visitors from all over the world.
- Playa Brava, one of Punta's main beaches, is home to the renowned sculpture of fingertips that emerge from the soft golden sand, called 'La Mano'. Among other sculptures around the city, the art galleries and museums give Punta del Este an artsy, eclectic atmosphere that makes it a stand-out destination.

Montevideo, Uruguay

- Tag 11 The capital of Uruguay, Montevideo's streets are lined with public buildings and homes that reveal the nation's architectural history. The Plaza de la Independencia, once home to a Spanish fortress, is the centre of the city, leading to gorgeous Art Deco structures and landmarks including the neoclassical Solís Theatre which opened in 1856.
- Visitors will find themselves amongst a vibrant town full of vim and vigour with musical theatre and cosy tango bars right next door to one another. It's also surrounded by an emerging wine region, so delicious drops are always on hand.

Buenos Aires, Argentina

- Tag 12 Discover the vibrant allure of Buenos Aires, the city they call the 'Paris of the Americas'. Immerse yourself in the city's captivating highlights and experience its unique charm. Latin passion and European romance define this beautiful capital, a dynamic city known for its wide-ranging architectural styles, contemporary and historical arts and culinary experiences.

Montevideo, Uruguay

- Tag 13 Arrive in Montevideo, Uruguay's vibrant capital city that boasts a rich 300-year history and an eclectic melange of Art Deco and Neoclassical architecture. While its Rambla (beachside avenue) may not be as famous as Barcelona's, it's much longer at 22 kilometres and traces the seaside almost the entire way. Most of the city's streets connect to the Rambla, making Montevideo an easy place to navigate and explore. There's a collective love of meat, wine, football and celebrations, as well as an annual month-long carnival.

At Sea

- Tag 14 Today, join an introductory presentation on your expedition voyage as the Discovery Team explains how your Zodiac and other Scenic Discovery excursions will operate during your voyage. The Discovery Team will enrich your journey with their deep knowledge in fields like geology, marine biology, history, and more, sharing captivating insights beyond guidebooks. While Discovery excursions are weather-dependent, your Captain and Discovery Team Leader will ensure you make the most of this breathtaking destination.

At Sea

Tag 15 Today is another leisurely day at sea. Head to the gym for an invigorating workout or the studio for a Pilates class, some guided stretching or aerial yoga. Perhaps book a treatment# at the tranquil Senses Spa, from an ESPA facial to an alternative therapy including Ayurvedic massage.

Spend the afternoon at leisure in your luxurious suite or head for the spacious and elegant Scenic Lounge Bar to enjoy your beverage of choice, whether it be aged whiskey - there are over 130 varieties included - or a glass of wine. Then choose from up to 10 world-class dining experiences for dinner.

Punta Piramides, Argentina

Tag 16 Keep your eyes open for the unique wildlife of the World Heritage-listed Punta Piramides nature reserve. An important breeding location for the endangered southern right whale, elephant seals and sea lions, Punta Piramides is a wildlife spotter's delight. Orca whales and migratory shorebirds also frequent the area.

When enjoying daily Discovery excursions, ask for your expert Discovery Team for photography tips and guidance on how to spot the wildlife around you. They will help you immortalise these incredible moments while cruising on the Zodiacs, kayaking and stand-up paddleboarding.

At Sea

Tag 17 After days of exploration, enjoy a sleep-in lulled by the rhythm of the ocean. A freshly squeezed juice, steaming barista-made coffee or tea delivered to your door by your butler will help start your leisurely day at sea.

The open bridge policy invites you to explore Scenic Eclipse II's state-of-the-art navigational deck. Guests are welcome any time to learn more about the technical abilities from the Captain and crew of The World's First Discovery Yachts and see it in full operation. The bridge is also one of the best viewing areas on the ship.

Isla Pinguino

Tag 18 Today you'll visit the remote and rugged Isla Pinguino, a windswept wildlife sanctuary just off the Patagonian coast. Named for its charismatic residents, the island is home to a thriving colony of Magellanic penguins and, unusually, a small group of rockhopper penguins, the only such colony found this far north on the Atlantic coast.

Step ashore with your expert Discovery Team for an up-close look at this vibrant ecosystem. As you walk the rocky terrain and seaweed-fringed coastline, keep your eyes open for lounging elephant seals and seabirds riding the thermals above the cliffs. The raw beauty of this windswept island offers a unique sense of seclusion and a deep connection to nature.

Cruise Strait of Magellan & Atlantic Ocean

Tag 19 Sail through the legendary Strait of Magellan and enjoy panoramic views of the rugged coastline out the open sea. Relax with a specialty tea or coffee in the Observation Lounge and watch the world float by through Swarovski telescopes.

Enjoy dinner with friends at one of the 10 dining experiences – enjoy a casual lunch at Azure Bar & Café or elegant affair at Elements. At night, enjoy a performance in the state-of-the-art theatre before you retreat to your ultra-luxury suite with a nightcap.

Punta Arenas, Chile

Tag 20

Punta Arenas, located at the southern tip of Chile, serves as the gateway to Antarctica and the breathtaking Torres del Paine National Park. Overlooking the historic Strait of Magellan, the city enchants visitors with its crisp, clean air, elegant European-style architecture, and renowned kayaking opportunities. Just offshore, Magdalena Island is home to thriving colonies of Magellanic penguins, making it a must-visit for wildlife enthusiasts.

After a day of exploration, unwind at the serene Senses Spa#. Indulge in an ESPA facial or experience the deep relaxation of an Ayurvedic massage, designed to restore balance and well-being.

Cruise Whiteside Canal & Strait of Magellan

Tag 21

Sail through picturesque Whiteside Canal today and the historic Strait of Magellan, which links the Atlantic and Pacific Oceans. Named after Portuguese explorer Ferdinand Magellan in 1520, this was the primary passage for seafaring transport before the Panama Canal. Follow the journeys of early explorers such as Magellan and Sir Francis Drake and learn about the rich maritime history of these legendary waterways from your expert Discovery Team.

You may wish to spend time in the theatre tonight, which has advanced cinemascope technology and multiple viewing screens that create an immersive 270-degree experience, complete with a twinkling night-sky ceiling.

Ainsworth Bay and Admiralty Sound, Chile

Tag 22

Explore majestic Admiralty Sound, which is home to leopard and elephant seals and hugged by snow-topped mountain ranges, wide bays and majestic fjords of Alberto de Agostini National Park. Go ashore to secluded Ainsworth Bay in a Zodiac, where you can get up close to towering glaciers and perhaps spot seals basking on the ice floes.

You may also wish to enjoy your time on board with a visit to the gym for an invigorating workout or the studio for a Pilates class, some guided stretching or aerial yoga.

Tucker Islets

Tag 23

The Tucker Islets is a group of small islands and rocky outcrops in the Strait of Magellan, which is home to colonies of Magellanic penguins and other seabirds, such as skuas and petrels.

Tonight could be the night you meet your new friends at Sushi @ Koko's for dinner. Enjoy entertainment in the state-of-the-art theatre and unwind with a nightcap at the Scenic Lounge Bar.

Condor and Aquila Glaciers

Tag 24

Today, you will witness the awe-inspiring Aguila Glacier and Condor Glacier, which form part of the Darwin Mountain Range – named after Charles Darwin – in Alberto de Agostini National Park. This is the third largest park in Chile, comprising fjords, glaciers and ice fields among subpolar forests and snow-capped peaks. Marvel at the immense size of these ancient ice formations cascading down the mountainside into the sea. Aguila Glacier is particularly beautiful feeding into a mineral-rich lagoon that attracts wildlife.

Beagle Channel

- Tag 25 Sail through the calm and scenic Beagle Channel, named so for the ship that carried Charles Darwin on his five-year discovery journey. Admire the dramatic views of the Andean mountains from the comfort of the ultra-luxury Scenic Eclipse. You will also cruise through the 64-kilometre Cockburn Channel, known for its stunning glacier views. Keep an eye out for seals, dolphins, and whales which frequent these waters.
- Watch this spectacular scenery slip by as you relax in a cabana on Deck 10. Alternatively, ask your butler to bring afternoon tea to your suite and relax on your private verandah.

Chilean Fjords

- Tag 26 Navigate the labyrinth of the Chilean Fjords – its long narrow inlets and steep cliffs, channels and islands all carved by glaciers. From the Observation Deck, with its commanding view of the bow, marvel at the towering peaks, cascading waterfalls and dense forests of this pristine wilderness.
- You'll also witness Seno Garibaldi, one of a handful of advancing glaciers in the world, and cruise to Seno Pia Glacier where you'll explore its ice crevasses and rivers. This area is a World Heritage-listed Biosphere Reserve, and its rich waters are home to seals, sea lions and seabirds, including the impressive Andean condor.

Cape Horn, Chile

- Tag 27 Sail through the iconic waters of Cape Horn, where the Atlantic and Pacific Oceans meet at the southernmost point of South America. It's a great place to spot sea lions, penguins, whales and seabirds. You'll also cruise through the Murray Channel, named after British naval officer Captain John Murray.
- In the afternoon, warm up with a drink in one of your Discovery Yacht's all-inclusive bars.
- Sip an aged whiskey at Scenic Lounge Bar or take time to relax at the Sky Bar on Deck 10.

Ushuaia, Argentina

- Tag 28 Discover Ushuaia, the enchanting "end of the world" destination. The city is nestled along the picturesque Beagle Channel against a backdrop of snow-dusted peaks, with the towering Monte Olivia commanding attention. As your gateway to the spellbinding Antarctic Peninsula, Ushuaia is a place of unrivalled beauty. Immerse yourself in the natural wonders, ancient cultures and inspiring spirit of exploration that defines this region.

At Sea

- Enjoy breakfast in your suite as your ultra-luxury Discovery Yacht navigates the legendary Drake Passage bound for Antarctica. Take in the vast expanse of the Southern Ocean as moment brings you closer to an unforgettable adventure.
- Tag 29 Feel the excitement building up as the Discovery Team shares with you all the details on how your Zodiac, helicopter[^], submarine[^] and other discovery expeditions will work. Get familiar with the team and your polar equipment – your expedition kit includes an expedition parka and water bottle that are yours to take home, plus the use of specialised polar boots, trekking poles and specific equipment you need for kayak and paddleboard excursions. Between landings, your outdoor gear will be stored in a personal locker in our convenient Discovery Centre. Prepare yourself for unparalleled 'pinch-me' moments, and be exposed to the unpredictability of the region, with your expert team deciding the course of action in the coming days.
- The team will make every attempt to have many landings and Discovery Excursions, including Zodiac tours, kayaking and optional helicopter[^] flights and submarine[^] dives.

Antarctica

Tag 30

Today you will enter Antarctic waters, an unpredictable but stunningly beautiful environment. Put on your complimentary polar parka and head to the Observation Deck to spot icebergs for the first time – it's a feeling that will stay with you forever.

Watch out for whale blows in the distance. Your Discovery Team is available to provide insightful information.

Be sure to check your daily program for the essential biosecurity and boot fitting schedule. And join the fascinating enrichment lecture on marine and seabird life – a captivating experience that will enhance your knowledge and connection to the natural world around you.

Antarctica

Tag 31

Slide open the floor-to-ceiling doors of your verandah suite to see icebergs sculpted by nature and glacial mountains rising from the ocean. Antarctica is a birdwatcher's delight, home to a variety of species, so keep your eyes peeled for wandering albatrosses, shearwaters, giant petrels and more.

Due to the extraordinary nature of the region, excursions throughout your Expedition Voyage are dependent on weather conditions. Your experienced Captain and Discovery Leader, who have made countless journeys to Antarctica, will use their expertise to design a bespoke voyage, making the most of your time in this spectacular destination.

Discovery:

Daily experiences may include cruising on Zodiacs, stepping ashore to view vast penguin rookeries or historic huts, and kayaking or paddle boarding around icebergs. Wherever your voyage takes you, you will have countless "pinch me" moments.

Antarctica

Tag 32

Start your day with freshly squeezed juice, steaming barista-made coffee or tea delivered to your door by your butler. Then set out on Zodiac excursions to explore breathtaking glaciated bays, tranquil channels and pristine landing sites. As you trek across the Antarctic wilderness, meet the adorable chinstrap, Adélie and gentoo penguins that inhabit this magical region

Small groups offer the best way to experience an environmentally sensitive destination like Antarctica. Guests will board the zodiacs according to their designated colour, where our expert polar Discovery Team will guide them, ensuring an unforgettable and unique adventure.

Antarctica

Tag 33

Various species of penguins can be found in Antarctic and the sub-Antarctic region, including Adélie, Chinstrap, Gentoo, and the very rare Emperor. Guided by the expert Discovery Team, you'll witness colonies up close; hear their calls and watch as they clumsily waddle along and interact with each other.

Whales are another majestic creature you may encounter, whether a minke, a humpback or an Orca. Watch them up close in a kayak or a Zodiac with the Discovery Team or observe them from the comfort of your ultra-luxury Discovery Yacht. However, you see them, it's a breathtaking experience.

Discovery:

Ask your expert Discovery Leader for photography tips so you can best capture the incredible wildlife and landscape around you.

Antarctica

Tag 34

From the moment it was discovered, Antarctica has held an irresistible allure for intrepid adventurers. The bold exploits of legendary explorers like Scott, Shackleton, and Amundsen have fueled its mystique, inspiring generations to venture into this untamed wilderness.

On this unforgettable day, you'll cruise past Antarctica's stunning icy mountains before stepping ashore by Zodiac to immerse yourself in the polar wilderness. With ample time to explore, this voyage ensures you experience the magic of this awe-inspiring landscape up close.

Back on board, enjoy a specialty tea or coffee in the Observation Lounge and take in the views through Swarovski telescopes.

Antarctica

Tag 35

In the untouched silence of this frozen wilderness, nature's rare sounds become unforgettable—whether it's the endearing chatter of penguins squabbling over prized pebbles or the thunderous roar of a glacier calving into the sea.

Towering glaciers provide one of the most awe-inspiring spectacles of your journey, with the chance to witness massive ice formations breaking away, creating brand-new icebergs before your eyes—a moment of pure wonder.

On board, explore some of your Discovery Yacht's indulgent spaces, from the welcoming Observation Lounge to the expansive Senses Spa#. Choose one of up to 10 world-class dining experiences on board tonight.

Antarctica

Tag 36

On your ultra-luxury yacht, every moment is crafted for both comfort and connection. Our inviting lounge provides the perfect setting to unwind and share unforgettable experiences with like-minded travellers.

For those craving adventure, the legendary Polar Plunge offers a thrilling rush—an unforgettable dive into icy waters, expertly coordinated by the Expedition Leader and Captain.

If you prefer to stay warm, find a prime viewing spot and enjoy the spectacle as fellow guests take the plunge, then join them for a toast with a glass of whiskey or a steaming cup of hot chocolate.

Discovery:

Glide past towering icebergs on a zodiac, step onto untouched white snow, and soar over vast mountain ranges. This is one of the world's few remaining pristine wildernesses, awaiting your exploration.

At Sea

Tag 37

As you cruise back across the Drake Passage toward South America, take this time to indulge in the ultra-luxury comforts of your Discovery Yacht and reflect on the awe-inspiring moments you've experienced.

Start your day with an invigorating workout in the state-of-the-art gym, a guided Pilates session, or a moment of relaxation in the PURE: Yoga & Pilates Studio.

As evening arrives, unwind in the elegant Scenic Lounge Bar, where you can toast to your expedition with a perfectly aged whiskey, a glass of fine wine, or a flute of French Champagne—all part of Scenic's truly all-inclusive ultra-luxury philosophy.

At Sea > Ushuaia

Tag 38

Make sure you book a treatment# at the tranquil Senses Spa before your expedition ends. Perhaps an ESPA facial or massage# or an alternative therapy including Ayurvedic massage or Japanese shiatsu. Afterwards, hold on to that feeling of calm for a while longer in the Zen-like space of the Vitality Lounge.

On your last night onboard for dinner choose from Koko's Asian Fusion Sushi @ Koko's (available by on board reservation) to watch the chefs at work or enjoy the spectacle of teppanyaki-style dining inspired by the markets of Asia at Night Market @ Koko's (available by on board reservation).

Ushuaia, Argentina > Buenos Aires

This morning, bid farewell to your expert crew and fellow travellers as your extraordinary journey comes to an end. After a final indulgent breakfast on board, disembark in Ushuaia and board your flight to Buenos Aires, carrying with you memories of an unforgettable adventure in the pristine landscapes of Antarctica.

Please book your flight to depart out of Buenos Aires after 09:30 PM.

Tag 39

#Spa treatments at additional cost. +All drinks on board, including those stocked in your mini bar, are included, except for a very small number of rare, fine and vintage wines, Champagnes and spirits. Specialty restaurants require a reservation, enquire on board. ~Kayak and stand-up paddleboard not available in all locations. ^Flights on board our two helicopters and submersible experiences are at additional cost, subject to regulatory approval, availability, weight restrictions, medical approval and weather conditions. Sightings cannot be guaranteed.

Helicopter not operational in Brazil and Argentina. Submersible not operational in Uruguay, Brazil and Argentina.

The itinerary is a guide only and may be amended for operational reasons. As such Scenic cannot guarantee the voyage will operate unaltered from the itinerary stated above. Please refer to our terms and conditions for further information.

Im Preis inbegriffen

- Services und Annehmlichkeiten an Bord
- Maximal 229 Gäste an Bord (200 in den Polarregionen)
- Großzügige Suiten mit privater Veranda 2:1-Verhältnis
- Gäste- und Butlerservice für jeden Gast
- Zehn kulinarische Erlebnisse in neun Gourmet-Menues – von gemütlicher Atmosphäre bis zum eleganten Fine Dining
- Auswahl an Premium-Markengetränken mit über 101 Whiskysorten
- Scenic Discovery Ausflüge mit dem Zodiac
- Komplettes Kajakprogramm und Stand-up-Paddle-Boarding
- Kostenloser Expeditionsarka und Wasserflasche sowie die Nutzung von speziellen Polartiefeln
- Interessantes Vortrags- und Bildungsprogramm mit Experten an Bord
- Spezielle Observation Lounge und Terrasse für die beste Aussicht
- Swarovski-Teleskope an Deck sowie Ferngläser in der Suite, damit Sie keinen aufregenden Momente verpassen
- Senses Spa** auf 551 m2 mit Fitnesscenter, Yoga- und Pilatesstudio
- Außen-Vitalpools nachskandinavischem Vorbild
- Modernes Theater mittäglichem Unterhaltungs- und Bildungsangebot
- WLAN inclusive
- Inlandsflüge inkl. Gebühren
- Flughafentransfers
- Trinkgelder an Bord und an Land

Nicht im Preis inbegriffen

- Internationale Flüge, sofern nicht angegeben
- Reiseversicherungen
- Visa- oder Passgebühren (falls erforderlich)
- persönliche Ausgaben (Einkäufe, optionale Ausflüge)
- sonstige im Programm nicht genannte Leistungen

Ihr Schiff

Ihr Schiff ist die "Scenic Eclipse II". Ausführlich stellen wir Ihnen dieses Schiff auf unseren Schiffseiten vor. [Ausführliche Informationen zu diesem Schiff.](#)

Passagiere

199

Bordsprachen



Eisklasse

PC-6

Special

Helikopter

