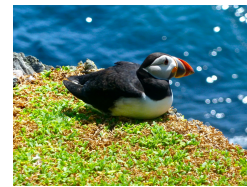


IHRE REISE

Faszination Arktis: Spitzbergen, Grönland & Island intensiv



<p>Reisetermin</p> <p>20.07.2027 - 15.08.2027</p>	<p>Reisedauer</p> <p>27 Tage</p>	<p>Reederei / Schiff</p> <p>Scenic Eclipse / SCENIC Luxury Cruises & Tours</p>
--	---	---



Scenic Eclipse Deluxe Veranda Suite CA, Deck 6

	<p>Doppelbelegung</p> <p></p> <p>€31.590</p> <p>pro Person</p>	<p>Einzelbelegung</p> <p></p> <p>€70.325</p> <p>pro Person</p>
---	--	--

Scenic Eclipse Deluxe Veranda Suite AA, Deck 7

	<p>Doppelbelegung</p> <p></p> <p>€32.785</p> <p>pro Person</p>	<p>Einzelbelegung</p> <p></p> <p>€72.715</p> <p>pro Person</p>
---	--	--

Scenic Eclipse Grand Deluxe Veranda Suite CD, Deck 6

	<p>Doppelbelegung</p> <p></p> <p>€34.340</p> <p>pro Person</p>	<p>Einzelbelegung</p> <p></p> <p>€75.825</p> <p>pro Person</p>
---	--	--

Scenic Eclipse Spa Suite SA, Deck 9



Doppelbelegung



€43.605

pro Person

Einzelbelegung



€94.355

pro Person

Scenic Eclipse Owners Penthouse Suite OP, Deck 9



Doppelbelegung



Nicht verfügbar

Einzelbelegung



Nicht verfügbar

Scenic Eclipse Veranda Suite A, Deck 8



Doppelbelegung



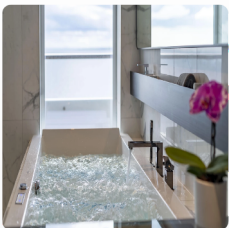
Nicht verfügbar

Einzelbelegung



Nicht verfügbar

Scenic Eclipse Spa Suite S, Deck 8



Doppelbelegung



Nicht verfügbar

Einzelbelegung



Nicht verfügbar

Scenic Eclipse Grand Deluxe Veranda Suite AD, Deck 8



Doppelbelegung



Nicht verfügbar

Einzelbelegung



Nicht verfügbar

Scenic Eclipse Veranda Suite C, Deck 6



Doppelbelegung



Nicht verfügbar

Einzelbelegung



Nicht verfügbar

Scenic Eclipse Grand Panorama Suite GP, Deck 6



Doppelbelegung



Nicht verfügbar

Einzelbelegung



Nicht verfügbar

Scenic Eclipse Panorama Suite P, Deck 8



Doppelbelegung






Nicht verfügbar

Einzelbelegung






Nicht verfügbar




Scenic Eclipse Spa Suite SB, Deck 9

	<p><i>Doppelbelegung</i></p>  Nicht verfügbar	<p><i>Einzelbelegung</i></p>  Nicht verfügbar
---	---	---

Scenic Eclipse Deluxe Veranda Suite DB, Deck 5

	<p><i>Doppelbelegung</i></p>  Nicht verfügbar	<p><i>Einzelbelegung</i></p>  Nicht verfügbar
--	---	---

Scenic Eclipse Veranda Suite D, Deck 5

	<p><i>Doppelbelegung</i></p>  Nicht verfügbar	<p><i>Einzelbelegung</i></p>  Nicht verfügbar
---	---	---

Scenic Eclipse Deluxe Veranda Suite DA, Deck 5

	<p><i>Doppelbelegung</i></p>  Nicht verfügbar	<p><i>Einzelbelegung</i></p>  Nicht verfügbar
---	---	---

Scenic Eclipse Two-Bedroom Penthouse Suite TP, Deck 9



Doppelbelegung



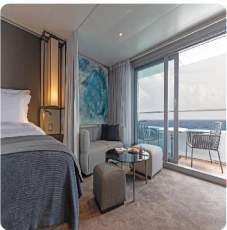
Nicht verfügbar

Einzelbelegung



Nicht verfügbar

Scenic Eclipse Grand Deluxe Veranda Suite BD, Deck 7



Doppelbelegung



Nicht verfügbar

Einzelbelegung



Nicht verfügbar

Scenic Eclipse Deluxe Veranda Suite BA, Deck 7



Doppelbelegung



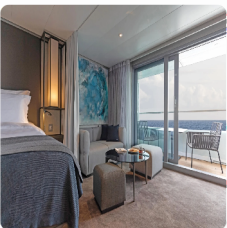
Nicht verfügbar

Einzelbelegung



Nicht verfügbar

Scenic Eclipse Grand Deluxe Veranda Suite DD, Deck 5



Doppelbelegung



Nicht verfügbar

Einzelbelegung



Nicht verfügbar

Scenic Eclipse Veranda Suite B, Deck 7



Doppelbelegung



Nicht verfügbar

Einzelbelegung



Nicht verfügbar



Oslo

Tag 1

Today you'll arrive in the beautiful city of Oslo. The Norwegian capital is the smallest in Scandinavia but packs a punch when it comes to cultural and nature-based experiences. Half of Oslo is covered in forest and parks and its cityscape is a melange of historical buildings and cutting-edge architecture, as well as outdoor sculptures and street art. The city is home to three famous museums honouring the rich nautical heritage of the Norse race and its warrior ancestors. Enjoy an overnight stay at your hotel.

Oslo > Longyearbyen, Spitsbergen

Tag 2

Fly from Oslo to Longyearbyen, high above the Arctic Circle. The capital of the Norwegian Svalbard Archipelago, Longyearbyen is on Svalbard's main island and is the northernmost territorial capital on the planet. The untouched landscapes make you feel like you are in completely unexplored territory.

Today, you will meet the Captain and crew of your ultra-luxury Discovery Yacht, Scenic Eclipse. Be welcomed on board with a glass of Champagne, explore your spacious suite and meet your fellow guests for a drink in the Sky Bar as you toast the start of an unforgettable journey.

Svalbard Archipelago

- Tag 3 Welcome to the remote wilderness of the Svalbard Archipelago, a dramatic polar desert surrounded by rugged glaciers, frozen tundra and craggy mountain peaks. Open the blackout curtains of your ultra-luxury suite and step onto your private verandah to take in the inspiring views. Each day unveils a new breathtaking vista, from the dramatic contrast of tundra and volcanic islands sprinkled with lush greenery, to the occasional snow-capped peaks that emerge majestically from the landscape.
- Today, join an introductory presentation about your expedition by the Discovery Team as they explain how your Zodiac and other Discovery excursions will work in the coming days.

Svalbard Archipelago

- Tag 4 As we continue cruising around Svalbard, there could be opportunities to see wildlife like whales, Arctic foxes, seals and seabirds, along with possible sightings of Svalbard reindeer, wolverines and Arctic rabbits. Be sure to keep the binoculars provided in your suite with you or use the Swarovski telescopes in the Observation Lounge for a closer look at the Arctic wildlife.
- Scenic Discovery:**
You will partake in daily Discovery excursions by Zodiac, kayaking and nature walks. Discover majestic Arctic scenery, tundra landscapes, and native wildlife and marine life, exploring pristine locations.

Svalbard Archipelago

- Tag 5 Continue cruising around the spectacular Svalbard Archipelago. When enjoying daily Discovery excursions, ask for the expert Discovery Team for photography tips and guidance on how to spot the wildlife around you. They will help you immortalise these incredible moments while cruising on the Zodiacs around impressive ice formations.
- With up to 20 members including geologists, historians, ornithologists, marine biologists, and glaciologists, the Discovery Team is at the heart of your Expedition Voyage.
- Scenic Discovery:**
Partake in daily Discovery excursions by Zodiac, kayak and nature walks. Discover majestic Arctic scenery, tundra landscapes, and native wildlife and marine life, exploring pristine locations.

At Sea

- Tag 6 Today, your Discovery Yacht will cross the Greenland Sea. Perhaps enjoy a quiet morning spent on your spacious verandah. Later join your fellow guests for a casual lunch in Azure Bar & Café, or you could start the day with an invigorating work out in the gym or a class in the PURE: Yoga & Pilates Studio.
- During the day, the theatre comes alive with captivating lectures from our Discovery Team. Be sure to check the Daily Program on your TV for timing—you won't want to miss these inspiring sessions!
- Find a spot in one of our observation lounges and enjoy the spectacular surrounding landscapes. The selection of specialty restaurants on board allows you to dine around the world each night, from Koko's Asian Fusion to French fine dining at Lumière (available by on board reservation).

Ittoqqortoormiit, Greenland

- Tag 7 Nestled beside the world's largest and deepest multi-branched fjord system, Ittoqqortoormiit stands as one of Greenland's most remote towns. Home to approximately 350 residents, this small community offers a fascinating insight into the traditional Inuit way of life. Here, people have embraced a sea-dependent existence, where the ever-changing sea ice opens up new opportunities for exploration.
- Immerse yourself in the community's resilience with a guided tour. Explore key landmarks such as the museum, church, weather station, and public service building.
- Scenic Discovery:** Weather permitting, join the Discovery Team on Zodiac excursions, explore by kayak or enjoy shore landings.

Scoresbysund, Greenland

Tag 8

Scoresbysund is the largest and deepest fjord system in the world, and the birthplace of many of Greenland's glaciers. Be amazed by the mountainous surrounds, the lively wildlife and the memorable adventures. Due to the extraordinary nature of the region, the sailing and expedition schedule is flexible. Your experienced Captain and Discovery Team leader will use their expertise to give you the best experience in this extraordinary part of the world.

As we enter this magnificent fjord system, stand in awe on the Observation Terrace or your private verandah, where you can marvel at the sheer grandeur of your surroundings.

Scoresbysund, Greenland

Tag 9

Experience an unforgettable journey through the breathtaking landscape of Scoresbysund, a fjord that reaches a staggering 350 kilometres in length and plunges down 600 metres. Scenic Eclipse will navigate through a maze of towering icebergs that gently drift under Arctic waters, calving from parent glaciers from the Inland Ice.

Take in this awe-inspiring landscape from the Observation Deck alongside your expert Discovery Team, who can answer any questions you have. Or perhaps you'd like to take it all in from the comfort of your private verandah.

Scenic Discovery:

Weather permitting, join the Discovery Team on a hike across the tundra, looking for muskoxen and blue Arctic foxes blending into the basalt rock. Cruise in a Zodiac to view hauled-out walruses and seals resting along the shoreline, and keep watch for migratory minke, humpback and fin whales.

Scoresbysund, Greenland

Tag 10

Scoresby Sund is celebrated for its stunning natural beauty, with towering cliffs, majestic icebergs, and vast glaciers. The surrounding landscape is predominantly mountainous, defined by steep, ascending slopes. While wildlife sightings in Greenland are not always certain, spotting animals in their natural environment is a truly extraordinary experience. The region is home to various species, such as Musk Ox and Arctic Hares.

Tonight, could be the night you enjoy Sushi @ Koko's (available by on board reservation) with your new friends. Stay up late in the bar or retire to the library for a moment of blissful solitude before bed.

Scoresbysund, Greenland

Tag 11

Today we will exit the magnificent Scoresbysund fjord. Wake up at your own time and ask your butler to bring breakfast to your suite, so you can take in the awe-inspiring views from your private verandah.

Enjoy some downtime at the expansive 550sqm Senses Spa. Book an appointment# with our skillful wellness therapists and surrender yourself to bliss. Afterwards, hold on to that feeling of calm for a while longer in the Zen-like space of the Vitality Lounge. Here, ambient light envelops you with tranquil music as the heat from our soothing thermal loungers works to gently purify the body.

At Sea > Akureyri, Iceland

Tag 12

Enjoy some relaxation on board today. Indulge in the 550sqm Senses Spa, reinvigorating your mind, body and soul. Pamper yourself with holistic ESPA treatments#, including massages and facials or experience alternative therapies such as Japanese shiatsu and Tibetan bowl sound healing.

The Discovery Team will be hosting lectures in the state-of-the-art theatre, recapping the wonders you have seen so far and providing inspiration for the ports to come.

Enjoy an evening in the state-of-the-art-theatre entertained by world-class performances as you sit back and relax sipping your favourite cocktail. Alternatively, choose to dine in the comfort of your suite and have your evening nightcap brought by your butler. Scenic Eclipse will arrive in Akureyri later this evening, where it will stay overnight.

Akureyri, Iceland

Tag 13 Akureyri is a small city nestled along the scenic shores of Eyjafjord. Regularly overshadowed by Iceland's famous capital Reykjavik, Akureyri is a more laidback and intimate experience. The city is easily explored on foot – enjoy the day walking around its vibrant streets lined with colourful houses, boutique shops, and cosy cafes. Take a wander through the botanical gardens or embark on a whale-watching tour.

Tonight, settle in at the spacious Scenic Lounge Bar to enjoy your beverage of choice, whether it be aged whiskey—there are over 130 varieties—or a glass of wine, while reflecting on the day's discoveries.

Vigur Island, Iceland

Tag 14 Welcome to Vigur Island, a private island oasis off Iceland's coast and just below the Arctic Circle. The island has a history dating to the 11th century and is a time capsule of Icelandic heritage, boasting charming buildings and traditional farming for eiderdown.

Vigur Island is also designated as an internationally important seabird habitat, where you may see some of the 7,000 breeding eider ducks, 100,000 puffins, nesting Arctic terns and Europe's largest colony of black guillemot. There's also a seal colony and passing whales, making this a remote wildlife sanctuary.

Dynjandivogur Waterfall, Iceland

Tag 15 Weather permitting, today we'll visit the jewel of the Westfjords, Dynjandi Waterfall. Feel the freezing mist on your face as you admire the cascading bridal veil falls and discover why it was nicknamed 'the thunder'. Tumbling down seven tiers over 100 metres, it is one of the most beautiful waterfalls in Iceland. Marvel at nature's grandeur and wildlife spectacle as you cruise through this remote corner of Iceland.

Reykjavik

Tag 16 Today you will arrive in Reykjavik, Iceland's vibrant capital. A captivating blend of natural beauty, rich history and modern Nordic charm. Surrounded by dramatic volcanic landscapes and the North Atlantic Ocean, the city offers a unique mix of colourful architecture, creative culture and a welcoming atmosphere.

Flatey Island

Tag 17 Flatey island, is a privately owned island nestled amidst the breathtaking landscapes of Iceland's northwest coast. The wooden houses on this remote outcrop were built over 100 years ago but are so well-preserved you'll feel as though you've stepped into the past. Just a couple of farmers live here now, surrounded by pristine beaches and this charming village frozen in time.

Scenic Discovery:

Weather permitting, join the Discovery Team on Zodiac and kayak excursions to further explore the Island.

Dynjandivogur Waterfall > Cruising Dýrafjörður

Tag 18 Weather permitting, this morning you will visit the jewel of the Westfjords, Dynjandi Waterfall. Feel the cold mist on your face as you admire the cascading bridal veil falls and discover why it was nicknamed 'the thunder'. Tumbling down seven tiers over 100 metres, it is one of the most beautiful waterfalls in Iceland.

Tonight, choose from up to 10 world-class on board dining experiences. Perhaps make this the evening you try Koko's Asian Fusion, a culinary celebration of Asia's diverse flavours.

Vigur Island

Tag 19

Welcome to Vigur Island, a private island oasis off Iceland's coast and just below the Arctic Circle. The island has a history dating to the 11th century and is a time capsule of Icelandic heritage, boasting charming buildings and traditional farming for eiderdown.

Vigur Island is also designated as an internationally important seabird habitat, where you may see some of the 7,000 breeding eider ducks, 100,000 puffins, nesting Arctic terns and Europe's largest colony of black guillemot. There's also a seal colony and passing whales, making this a remote wildlife sanctuary.

Sauðárkrókur > Sail across the Arctic Circle

Tag 20

The friendly town of Sauðárkrókur is located in a fertile valley along the south-western shore of Skagafjörður Fjord. It's the largest town in northwest Iceland, though is home to just over 2,500 people. The charming downtown will welcome you as you stroll through the small collection of distinctive, traditional buildings where the past seems to be brought back to life.

This afternoon, your Discovery Yacht will cross the Arctic Circle. Be sure to find yourself a good vantage point for this awe-inspiring occasion. Although the line is invisible, the surrounding scenery provides stunning atmosphere.

At Sea > Ittoqqortoormit, Greenland

Tag 21

Nestled beside the world's largest and deepest multi-branched fjord system, Ittoqqortoormit stands as one of Greenland's most remote towns. Home to approximately 350 residents, this small community offers a fascinating insight into the traditional Inuit way of life. Here, people have embraced a sea-dependent existence, where the ever-changing sea ice opens new opportunities for exploration.

Immerse yourself in the community's resilience with a guided tour. Explore key landmarks such as the museum, church, weather station, and public service building.

Scenic Discovery:

Weather permitting, join the Discovery Team on Zodiac excursions, explore by kayak or enjoy shore landings.

Cruising Kong Oscar Fjord

Tag 22

King Oscar Fjord, located at the northern border of the Scoresby Land peninsula, offers stunning views with its many side arms. Cruising through this fjord in Northeast Greenland National Park offers an ideal vantage point to witness dramatic landscapes, glaciers, and wildlife.

Tonight, meet new friends in one of the all-inclusive bars and lounges and reflect on the journey so far. Shared travel experiences can forge lifelong friendships, especially in a destination as spectacular as the Arctic Circle.

Experience the midnight sun in Greenland's far north by sailing overnight through King Oscar Fjord and Kejser Franz Fjord.

Scenic Discovery:

Weather permitting, join the Discovery Team on Zodiac excursions.

Ella Island

Tag 23

Ella Island, where five iceberg-filled fjords converge, is a true gem of Greenland's wild beauty. As the home of the legendary Sirius Dog Sled Patrol, it boasts one of the most awe-inspiring views on the planet. Picture vibrant red buildings nestled at the base of towering 1,350-metre (4,400-foot) cliffs—an almost otherworldly scene that must be experienced to be believed.

Perhaps take a moment this afternoon to unwind in your suite. Ask your butler to deliver your preferred beverage and curl up with a book or simply enjoy the incredible views beyond your private verandah.

Scenic Discovery:

Weather permitting, join the Discovery Team on Zodiac excursions, explore by kayak or enjoy shore landings.

Nordfjord

Tag 24

The Nordfjord reaches a breathtaking climax at the majestic Waltershausen Glacier, the largest glacier cascading from the Greenland Ice Sheet. Dark streaks trace mesmerizing patterns across the glacier's towering face and its sculpted icebergs. Your Zodiac excursion will take you to explore enchanting ice caves, where you'll witness the thrilling spectacle of ice fragments breaking free and plunging into the shimmering waters below—a truly unforgettable Arctic experience.

If weather conditions permit, get ready for the exhilarating rush of a polar plunge. It's an electrifying and refreshing adventure that will stay with you for years to come.

Scenic Discovery:

Weather permitting, join the Discovery Team on Zodiac excursions.

At Sea

Tag 25

After a couple of active days on shore, today would be a good time for some relaxation. The indulgent Senses Spa# awaits on Deck 6. The expansive 550sqm facilities are unlike anything you've experience at sea.

Find a spot in one of our observation lounges and enjoy the spectacular surrounding landscapes.

During the day, our specialist Discovery Team will present informative and entertaining talks about the region that you're travelling through. Don't forget to check the Daily Program on your TV for timing—you won't want to miss these inspiring sessions!

Tonight, dine around the world with Scenic Eclipse's extraordinary dining experiences, such as Sushi @ Koko's or fine French cuisine at Lumière (both available by on board reservation).

Grundarfjörður, Iceland

Tag 26

Nestled within the breathtaking landscapes of the Snæfellsnes Peninsula, Grundarfjörður exudes charm with its quaint fishing village atmosphere and vibrant, colourful houses. As you wander its winding streets, you'll be captivated by the picturesque scenery at every turn.

Dominating the skyline is the iconic Kirkjufell, affectionately known as Church Mountain, which stands as a majestic backdrop to this idyllic coastal community. Its distinctive silhouette, often shrouded in mist or bathed in the golden glow of sunset, has made it one of the most photographed mountains in all of Iceland, adding to the allure of this enchanting village.

Reykjavík, Iceland

Tag 27

Your Expedition Voyage ends this morning in Reykjavík, Iceland's quirky and creative capital. Savour one last breakfast in your suite before saying goodbye to your new friends and the crew who shared this voyage with you.

You'll disembark after breakfast and be transferred to the airport, where magical memories of this isolated corner of the world will keep you company for your flight and many years to come.

Please book your flight to depart out of Reykjavik after 01:00 PM.

#Spa treatments at additional cost. +All drinks on board, including those stocked in your mini bar, are included, except for a very small number of rare, fine and vintage wines, Champagnes and spirits. Specialty restaurants require a reservation, enquire on board. ^Flights on board our two helicopters and submersible experiences are at additional cost, subject to regulatory approval, availability, weight restrictions, medical approval and weather conditions.

Helicopter not operational in Greenland.

The itinerary is a guide only and may be amended for operational reasons. As such Scenic cannot guarantee the voyage will operate unaltered from the itinerary stated above. Please refer to our terms and conditions for further information.

Im Preis inbegriffen

- Services und Annehmlichkeiten an Bord
- Maximal 229 Gäste an Bord (200 in den Polarregionen)
- Großzügige Suiten mit privater Veranda 2:1-Verhältnis
- Gäste- und Butlerservice für jeden Gast
- Zehn kulinarische Erlebnisse in neun Gourmet-Menues – von gemütlicher Atmosphäre bis zum eleganten Fine Dining
- Auswahl an Premium-Markengetränken mit über 101 Whiskysorten
- Scenic Discovery Ausflüge mit dem Zodiac
- Komplettes Kajakprogramm und Stand-up-Paddle-Boarding
- Kostenloser Expeditionsparaka und Wasserflasche sowie die Nutzung von speziellen Polartiefeln
- Interessantes Vortrags- und Bildungsprogramm mit Experten an Bord
- Spezielle Observation Lounge und Terrasse für die beste Aussicht
- Swarovski-Teleskope an Deck sowie Ferngläser in der Suite, damit Sie keinen aufregenden Momente verpassen
- Senses Spa** auf 551 m² mit Fitnesscenter, Yoga- und Pilatesstudio
- Außen-Vitalpools nachskandinavischem Vorbild
- Modernes Theater mittäglichem Unterhaltungs- und Bildungsangebot
- WLAN inclusive
- Inlandsflüge inkl. Gebühren
- Flughafentransfers
- Trinkgelder an Bord und an Land

Nicht im Preis inbegriffen

- Internationale Flüge, sofern nicht angegeben
- Reiseversicherungen
- Visa- oder Passgebühren (falls erforderlich)
- persönliche Ausgaben (Einkäufe, optionale Ausflüge)
- sonstige im Programm nicht genannte Leistungen

Ihr Schiff

Ihr Schiff ist die "Scenic Eclipse". Ausführlich stellen wir Ihnen dieses Schiff auf unseren Schiffseiten vor. [Ausführliche Informationen zu diesem Schiff.](#)

Passagiere
199

Bordsprachen


Eisklasse
PC-6

Special
Helikopter

