

IHRE REISE

*Die ultimative Reise von Island
 nach Kanada: Wildtiere &
 Gletscher*

Reisetermin

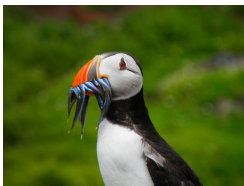
15.08.2027 - 12.09.2027

Reisedauer

29 Tage

Reederei / Schiff

Scenic Eclipse / SCENIC Luxury Cruises & Tours



Scenic Eclipse Veranda Suite A, Deck 8



Doppelbelegung



€31,455

pro Person

Einzelbelegung



€70,920

pro Person

Scenic Eclipse Deluxe Veranda Suite CA, Deck 6



Doppelbelegung



€32,130

pro Person

Einzelbelegung



€72,270

pro Person

Scenic Eclipse Deluxe Veranda Suite AA, Deck 7



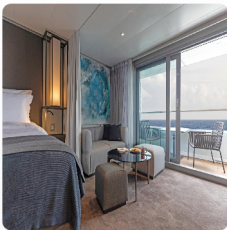
Doppelbelegung


€33.345
 pro Person

Einzelbelegung


€74.700
 pro Person

Scenic Eclipse Grand Deluxe Veranda Suite CD, Deck 6



Doppelbelegung


€35.100
 pro Person

Einzelbelegung


€78.210
 pro Person

Scenic Eclipse Panorama Suite P, Deck 8



Doppelbelegung


€77.355
 pro Person

Einzelbelegung


€162.720
 pro Person

Scenic Eclipse Grand Panorama Suite GP, Deck 6



Doppelbelegung


€78.975
 pro Person

Einzelbelegung


€165.960
 pro Person

Scenic Eclipse Spa Suite SA, Deck 9



Doppelbelegung



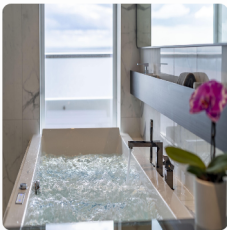
Nicht verfügbar

Einzelbelegung



Nicht verfügbar

Scenic Eclipse Spa Suite S, Deck 8



Doppelbelegung



Nicht verfügbar

Einzelbelegung



Nicht verfügbar

Scenic Eclipse Owners Penthouse Suite OP, Deck 9



Doppelbelegung



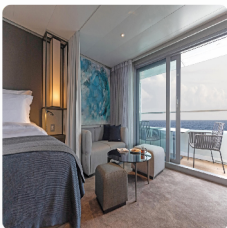
Nicht verfügbar

Einzelbelegung



Nicht verfügbar

Scenic Eclipse Grand Deluxe Veranda Suite AD, Deck 8



Doppelbelegung



Nicht verfügbar

Einzelbelegung



Nicht verfügbar

Scenic Eclipse Veranda Suite C, Deck 6



Doppelbelegung



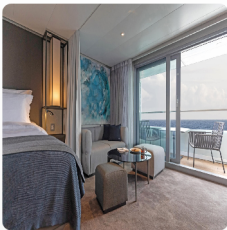
Nicht verfügbar

Einzelbelegung



Nicht verfügbar

Scenic Eclipse Grand Deluxe Veranda Suite BD, Deck 7



Doppelbelegung



Nicht verfügbar

Einzelbelegung



Nicht verfügbar

Scenic Eclipse Veranda Suite B, Deck 7



Doppelbelegung



Nicht verfügbar

Einzelbelegung



Nicht verfügbar

Scenic Eclipse Veranda Suite D, Deck 5



Doppelbelegung



Nicht verfügbar

Einzelbelegung



Nicht verfügbar

Scenic Eclipse Deluxe Veranda Suite BA, Deck 7



Doppelbelegung



Nicht verfügbar

Einzelbelegung



Nicht verfügbar

Scenic Eclipse Deluxe Veranda Suite DB, Deck 5



Doppelbelegung



Nicht verfügbar

Einzelbelegung



Nicht verfügbar

Scenic Eclipse Spa Suite SB, Deck 9



Doppelbelegung



Nicht verfügbar

Einzelbelegung



Nicht verfügbar

Scenic Eclipse Two-Bedroom Penthouse Suite TP, Deck 9



Doppelbelegung



Nicht verfügbar

Einzelbelegung



Nicht verfügbar

Scenic Eclipse Grand Deluxe Veranda Suite DD, Deck 5



Doppelbelegung



Nicht verfügbar

Einzelbelegung



Nicht verfügbar

Scenic Eclipse Deluxe Veranda Suite DA, Deck 5



Doppelbelegung



Nicht verfügbar

Einzelbelegung



Nicht verfügbar



Reykjavik

Tag 1

Welcome to Reykjavik, the world's northernmost capital city and the beginning of your journey. It's a delightful introduction to Iceland's unique and creative culture.

This afternoon, you'll meet the Captain and crew of your ultra-luxury Discovery Yacht, Scenic Eclipse. Be welcomed on board with a glass of Champagne and explore your spacious suite. Meet your fellow guests for a drink in the Sky Bar as you toast to the start of an epic journey.

Please book your flight to arrive into Reykjavik prior to 02:00 PM.

Dynjandivogur Waterfall

Tag 2

Today, prepare to feel freezing mist on your face as you admire the jewel of the Westfjords. Appropriately nicknamed 'the thunder' as it tumbles down seven tiers over 100 metres, Dynjandi Waterfall is one of the most beautiful waterfalls in Iceland. Weather permitting, marvel at nature's grandeur and keep an eye out for local wildlife as you sail through this remote corner of the country.

Isafjordur

Tag 3

Characterized by deep, blue fjords, separated by flat-topped mountains, Ísafjörður is the largest settlement in the Westfjords of Iceland. Explore remote Iceland from one of the most stunning towns in the country, with old timber framed houses and architecture. Bursting with a wealth of wildlife, keep your eyes peeled for birds and Arctic foxes on the cliffs, seals on the coast and whales cruising in the surrounding ocean.

At Sea

Tag 4

Enjoy a relaxing day at sea as you make your way west towards Greenland. Perhaps ask your butler to bring breakfast to your suite, to be enjoyed as you watch the icy ocean slip by from your private verandah. Then explore some of the indulgent spaces on board, from the welcoming Observation Lounge to the indulgent Senses Spa# with its sauna and heated therapy lounge.

Join the experts from the Discovery Team for a lecture or talk about upcoming ports, then sit back with your favourite cocktail for an evening of entertainment in the state-of-the-art-theatre.

Fridtjof Nansen Halvo Glacier

Tag 5

Unlike the rest of Greenland, the Sermersooq municipality (where the Fridtjof Nansen peninsula is located) is smooth and unbroken terrain. Here, the magnificent Greenland Ice Sheet flows right to the shore. The peninsula gets its name from famed explorer Fridtjof Nansen, who launched his pioneering Greenland venture from Umivik Bay. This 1888 expedition confirmed that Greenland was completely covered in ice.

Over the next seven days in Greenland, countless adventures await, from exhilarating whale watching to thrilling kayak excursions and invigorating polar plunges, promising unforgettable experiences.

Skjoldungen Fjord

Tag 6

Glaciers calving, rivers flowing, towering rock walls and colourful forests - the Skjoldungen Fjord is spectacular. Look up to admire huge crevasses and freestanding pillars of ice standing silhouetted against the blue Greenland sky. On the lower slopes, Arctic wildflowers will bloom amongst the dwarf birch and willow trees. Join the Discovery Team on the Observation Deck as nimble Scenic Eclipse weaves through numerous icebergs in this narrow channel and learn about the archaeological remains that have been found in this region, suggesting people lived here over 4,000 years ago.

Cruising Prince Christian Sound > Herjolfsnes

Tag 7

Carving a breathtaking, naturally formed path that separates the mainland from the islands of Cape Farewell, Prince Christian Sound is one of Greenland's most scenic waterways and a highlight of any cruise in the region. Over a hundred kilometers in length, and flanked by magnificent glaciers and granite cliffs, this narrow passage is only accessible during summer, when the largest ice blockades melt away.

With her elegant design and state-of-the-art technology, Scenic Eclipse brings you closer to the towering glaciers, icebergs and imposing peaks for unmissable photo opportunities.

At Sea

Tag 8

After a restorative night of rest in your ultra-luxury suite, wake on your own time. The day is yours to spend exactly as you wish.

Take the time to acquaint yourself with the exceptional range of facilities on board your ultra-luxury Discovery Yacht. Each indoor and outdoor space has been carefully curated with you in mind. Relax and slow down to the rhythm of the ocean, perhaps using the complimentary binoculars in your suite to scan the horizon in search of whales.

Nuuk

Tag 9

Clinging to a jagged peninsula on the southwest coast of Greenland, Nuuk is the island's capital and largest city. The area has been inhabited since 2200BC, though the present town was only established in 1728.

Nuuk's colourful wooden buildings are a visual standout on your guided tour of the Old Harbour. The picturesque site reveals history and traditions that remain strong today, making Nuuk a hub of modern Nordic culture. Discover innovative architecture inspired by the Northern Lights and restaurants showcasing local recipes and ingredients.

Evighed Fjord

Tag 10

Enjoy a slow day cruising through Evighed Fjord, or 'Eternity Fjord', considered one of the most beautiful in Greenland. Stretching for more than 75 kilometres, you'll be awed by the endless fields of ice glittering under the sun. Tall, jagged peaks threaded with glaciers rise straight up out of the calm blue waters. Many of the glaciers are very active and you will likely hear chunks of ice calving away and collapsing loudly into the ocean. In Evighed Fjord, you'll feel the beauty and power of nature all around you.

Disko Bay

Tag 11

Today, we arrive in the breathtaking Disko Bay, a true paradise for whales and Arctic wildlife. Here, shimmering icebergs of all shapes and sizes drift gracefully across the water, each one a stunning creation of the legendary Ilulissat Icefjord.

Stand in awe on the Observation Terrace or your private verandah, where you can marvel at the sheer grandeur of the surroundings.

Scenic Discovery:

Weather permitting, explore with the Discovery Team by Zodiac, kayak, submersible^ or helicopter^.

Ilulissat

Tag 12

Ilulissat is the main town on the Disko Bay, named from the Inuit word for 'iceberg'. It's famous for the large number of icebergs breaking away from the nearby Ilulissat Icefjord, a World Heritage-listed site. The Icefjord is the mouth of the vast Sermeq Kujalleq Glacier, one of the world's fastest moving and most active glaciers, calving a remarkable 46 cubic kilometers of ice annually. Listen for the rumbling sounds in the distance as huge chunks of ice break from the glacier and tumble into the water below.

At Sea

Tag 13

After days of exploration, enjoy some much-needed relaxation as you cruise the waters of West Greenland today. Towering cliffs and serene waters create a mesmerizing backdrop as you graze the day away. Scenic Eclipse's all-inclusive premium beverages ensure you'll find something that suits your taste perfectly.

As this is your last full day on board, take some time for a dip in the temperature-controlled Vitality Pools, a treatment in the Senses Spa®, an aerial yoga class in the PURE: Yoga & Pilates studio or an exquisite tea in the Observation Lounge.

Kangerlussuaq

Tag 14

Kangerlussuaq is a stunning stop on your journey, offering a unique glimpse into Greenland's wild landscapes and frontier living. With its dramatic scenery and proximity to the Greenland Ice Cap, it's a perfect destination to experience the raw beauty of the Arctic.

Sisimiut

Tag 15

Greenland's second-largest town, Sisimiut is named after the fox dens that dot its landscape. Its charming streets, lined with colourful houses, lead to vast backcountry areas ripe for exploration. Beyond the town's tranquil facade lies a playground for outdoor enthusiasts, offering hiking trails, kayaking routes, and wildlife encounters. Dive into the town's cultural heritage through museums and cultural centres, discovering rich Inuit traditions and early settlers' legacies.

Scenic Discovery:

Weather permitting, explore by Zodiac, kayak, submersible[^], helicopter[^], or join the Discovery Team on nature hikes.

Ilulissat

Tag 16

Wake up in Ilulissat, the "Iceberg Capital of the World." Home to the World Heritage-listed Ilulissat Icefjord, this stunning region showcases some of the most dramatic glacial landscapes on Earth. Formerly known as Jakobshavn, this town is famed for the spectacle of icebergs breaking away from the glacier, a sight emphasised by the rumbling sounds of calving ice from the Sermeq Kujalleq Glacier. Witnessing this natural phenomenon is a mesmerising experience, offering a glimpse into the dynamic beauty of Greenland.

Scenic Discovery:

Weather permitting, explore by Zodiac, kayak, or go onshore to explore.

Disko Bay Cruising

Tag 17

Today, we'll cruise through the awe-inspiring Disko Bay, renowned for its stunning natural beauty. Pristine icebergs shimmer in the Arctic sunlight, while majestic glaciers carve their path through the dramatic landscape.

Take in the breathtaking views from the Observation Terrace or your private verandah, where you can fully appreciate the grandeur of this incredible region.

Evighed Fjord / Eternity Glacier

Tag 18

Glide through Evighed Fjord, aptly named "Eternity Fjord" for its endless panoramas of snow-draped peaks and dazzling glaciers, it's considered one of the most beautiful in Greenland. Stretching for more than 75 kilometres, you'll be awed by the endless fields of ice glittering under the sun. Tall, jagged peaks threaded with glaciers rise straight up out of the calm blue waters. Many of the glaciers are very active and you will likely hear chunks of ice calving away and collapsing loudly into the ocean. In Evighed Fjord, you will feel the beauty and power of nature all around you.

Scenic Discovery:

Weather permitting, embark on Zodiac excursions with the expert Discovery Team and take in the breathtaking landscapes.

At Sea

- Start your day with freshly squeezed juice, a steaming barista-made coffee, or tea delivered to your door by your butler. Today is the perfect opportunity to relax and unwind as we sail across the Davis Strait toward the Canadian Arctic.
- Tag 19 Take part in a wellness class at PURE: Yoga & Pilates Studio or indulge in a massage# at the Senses Spa. The Discovery Team's engaging lectures will share invaluable insights and foster a deeper connection to this extraordinary environment.
- Enjoy tonight's entertainment at the state-of-the-art theatre before you retreat to your ultra-luxury suite. Alternatively choose to dine in the comfort of your suite and have your evening nightcap brought by your own butler, choosing from a premium collection of wines, beers and spirits.

Iqaluit, Baffin Island, Canada

- Tag 20 Welcome to Baffin Island, the fifth-largest island in the world and the Jewel of the Canadian High Arctic. This remarkable destination is home to stunning fjords, ice-capped mountains, and a thriving Inuit community. In Iqaluit, the cultural heart of Nunavut, explore traditional arts and crafts markets, visit the Nunatta Sunakkutaangit Museum and meet the Inuit people, an integral part of Iqaluit, a remote community at the head of Frobisher Bay.
- Tonight, dine around the world with your Discovery Yacht's extraordinary dining experiences, such as Sushi @ Koko's or fine French cuisine at Lumière (both available by on board reservation).

Monumental Island > Lady Franklin Island

- Today, witness Arctic wildlife at two of Canada's most remote and pristine islands. We'll visit Monumental Island, a renowned haven for walrus. Explore the shoreline by Zodiac, keeping an eye out for these fascinating creatures. There's also a chance to spot polar bears from a respectful distance.
- Tag 21 Later, we'll arrive at Lady Franklin Island, best known for its huge vertical cliffs of Archean rock, a breathtaking gem along the rugged, wildlife-rich southern coast of Baffin Island.
- With expert guidance from the Discovery Team, you'll uncover exclusive insights into the captivating wildlife and geological wonders that make this destination truly unforgettable.
- Scenic Discovery:**
 Based on the weather conditions, your Captain and Discovery Team will map out the optimal sites and activities to explore.

Lower Savage Islands

- Tag 22 At the southeast tip of Baffin Island, you'll find the Lower Savage Islands. A labyrinth of rugged channels and towering cliffs, these islands are a sanctuary for Arctic wildlife. Their rocky terrain is home to polar bears, Arctic foxes, walruses, and seals, as well as thriving seabird colonies. A maze of channels winds through the islands, offering outstanding Zodiac cruising opportunities.
- Scenic Discovery:**
 Based on the weather conditions, your Captain and Discovery Team will map out the optimal sites and activities to explore.

At Sea

Tag 23

After days of exploration, spend time relaxing in your spacious suite. A Sea Day aboard your Discovery Yacht provides the perfect opportunity to relax, enjoy the Sense Spa® and socialise with fellow guests.

The Observation Lounge and Terrace occupies a commanding position at the bow of the ship on Deck 5 and is the perfect place for a specialty tea or coffee while reading a book, playing a board game and watching the world float by. If you're looking for some quiet reflection or a bit of respite, nestle into one of the cabanas on Deck 10. With a freshly squeezed juice or a refreshing spritz depending on your mood, enjoy the expansive sea views with your complimentary binoculars found in your suite.

Our Discovery Team will captivate you with insightful talks on the local wildlife and history.

Join them on deck as we navigate the icy, fast-moving waters of the Hudson Strait, a vital waterway connecting Hudson Bay to the Atlantic Ocean. Known for its stunning landscapes and challenging currents, this stretch of water offers a unique opportunity to experience the raw beauty and power of the Arctic.

Kinngait (Cape Dorset), Baffin Island, Canada

Tag 24

Located in the stunning Canadian Arctic Archipelago on southwestern Baffin Island, this remarkable destination has been home to the Inuit for thousands of years. Today, it thrives as a world-renowned centre of creativity, where skilled artisans and craftspeople bring the Arctic's spirit to life through their exceptional artistry.

Check your Daily Program for today's scheduled activities in Cape Dorset.

At Sea

Tag 25

Start your day with a fitness class, followed by a refreshing soak in the heated Vitality pool. After your invigorating start, treat yourself by calling your butler to deliver breakfast to your room.

As you sail through the vast expanse of Hudson Bay, keep an eye out for beluga whales, which thrive in its waters. This incredible region, known for its rich marine life, is also home to a variety of Arctic wildlife. While navigating its serene yet rugged waters, you might catch a glimpse of these graceful creatures as they swim alongside the ship, making for an unforgettable experience.

At Sea

Tag 26

Today could be the day you visit the bridge where the Captain's open bridge policy welcomes guests to discover more about the technical capabilities of The World's First Discovery Yacht and see it in full operation. Plus, it's one of the best spots on the ship for taking in stunning views.

On the second day of sailing through Hudson Bay, the world's second-largest bay, you'll experience a sanctuary for Arctic wildlife. The waters are teeming with seals, and whales can appear at any time, while millions of seabirds fill the skies, making it a true paradise for nature lovers.

Churchill, Canada

Tag 27

Located on the shores of Hudson Bay, Churchill is the "polar bear capital of the world." With rugged streets and vast, sweeping landscapes, there's a sense of being at the edge of the world. Surrounded by the untamed beauty of the northern wilderness, the stark solitude and endless expanses make this remarkable destination truly captivating.

This charming town offers a variety of exciting activities—be sure to check the daily program for the scheduled activities.

In the evening, share stories with your new friends over dinner in one of up to 10 all-inclusive dining experiences on board your Discovery Yacht.

Churchill, Canada > Toronto

Tag 28

After a final gourmet breakfast, bid farewell to the Arctic as you board your flight to Toronto for an overnight stay. This marks the end of your incredible voyage through Greenland and the Canadian Arctic—but the memories of icebergs, unique wildlife and untouched wilderness will stay with you forever.

Toronto, Canada

Tag 29

After your expedition voyage, unwind with an overnight stay in Toronto. After breakfast, join the included transfer to the airport, marking the perfect conclusion to your unforgettable journey.

#Senses Spa treatments and services at additional cost. Daily activities may be subject to change; please consult your Daily Wonder for updates. +All drinks on board, including those stocked in your mini bar, are included, except for a very small number of rare, fine and vintage wines, Champagnes and spirits. Specialty restaurants require a reservation, enquire on board. *Helicopter and submersible excursions at additional cost and subject to regulatory approval, availability, weight restrictions, medical approval and weather conditions.

Helicopter and Submersible are not operational in Canada and Greenland.

The itinerary is a guide only and may be amended for operational reasons. As such Scenic cannot guarantee the voyage will operate unaltered from the itinerary stated above. Please refer to our terms and conditions for further information.

Im Preis inbegriffen

- Services und Annehmlichkeiten an Bord
- Maximal 229 Gäste an Bord (200 in den Polarregionen)
- Großzügige Suiten mit privater Veranda 2:1-Verhältnis
- Gäste- und Butlerservice für jeden Gast
- Zehn kulinarische Erlebnisse in neun Gourmet-Menues – von gemütlicher Atmosphäre bis zum eleganten Fine Dining
- Auswahl an Premium-Markengetränken mit über 101 Whiskysorten
- Scenic Discovery Ausflüge mit dem Zodiac
- Komplettes Kajakprogramm und Stand-up-Paddle-Boarding
- Kostenloser Expeditionsarka und Wasserflasche sowie die Nutzung von speziellen Polartiefeln
- Interessantes Vortrags- und Bildungsprogramm mit Experten an Bord
- Spezielle Observation Lounge und Terrasse für die beste Aussicht
- Swarovski-Teleskope an Deck sowie Ferngläser in der Suite, damit Sie keinen aufregenden Momente verpassen
- Senses Spa** auf 551 m2 mit Fitnesscenter, Yoga- und Pilatesstudio
- Außen-Vitalpools nachskandinavischem Vorbild
- Modernes Theater mittäglichem Unterhaltungs- und Bildungsangebot
- WLAN inclusive
- Inlandsflüge inkl. Gebühren
- Flughafentransfers
- Trinkgelder an Bord und an Land

Nicht im Preis inbegriffen

- Internationale Flüge, sofern nicht angegeben
- Reiseversicherungen
- Visa- oder Passgebühren (falls erforderlich)
- persönliche Ausgaben (Einkäufe, optionale Ausflüge)
- sonstige im Programm nicht genannte Leistungen

Ihr Schiff

Ihr Schiff ist die "Scenic Eclipse". Ausführlich stellen wir Ihnen dieses Schiff auf unseren Schiffseiten vor. [Ausführliche Informationen](#) zu diesem Schiff.

Passagiere

199

Bordsprachen



Eisklasse

PC-6

Special

Helikopter

