

IHRE REISE

# Arktis-Abenteuer: Grönland, Hudson Bay & Kanadas Norden

Reisetermin

27.08.2027 - 27.09.2027

Reisedauer

32 Tage

Reederei / Schiff

Scenic Eclipse / SCENIC Luxury Cruises & Tours



Scenic Eclipse Veranda Suite A, Deck 8



Doppelbelegung



€36.375

pro Person

Einzelbelegung



€80.365

pro Person

Scenic Eclipse Deluxe Veranda Suite CA, Deck 6



Doppelbelegung



€37.125

pro Person

Einzelbelegung



€81.865

pro Person

Scenic Eclipse Deluxe Veranda Suite AA, Deck 7



Doppelbelegung



€38.475

pro Person

Einzelbelegung



€84.565

pro Person

Scenic Eclipse Grand Deluxe Veranda Suite CD, Deck 6



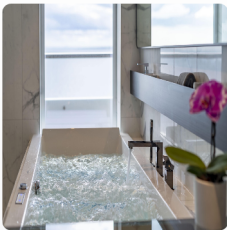
*Doppelbelegung*

  
**€ 40.425**  
 pro Person

*Einzelbelegung*

  
**€ 88.465**  
 pro Person

Scenic Eclipse Spa Suite S, Deck 8



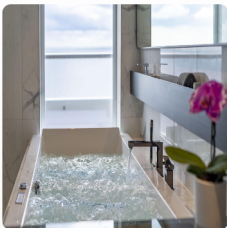
*Doppelbelegung*

  
**€ 50.775**  
 pro Person

*Einzelbelegung*

  
**€ 109.165**  
 pro Person

Scenic Eclipse Spa Suite SA, Deck 9



*Doppelbelegung*

  
**€ 51.375**  
 pro Person

*Einzelbelegung*

  
**€ 110.365**  
 pro Person

Scenic Eclipse Panorama Suite P, Deck 8



*Doppelbelegung*

  
**€ 87.375**  
 pro Person

*Einzelbelegung*

  
**€ 182.365**  
 pro Person

Scenic Eclipse Owners Penthouse Suite OP, Deck 9



Doppelbelegung

  
**€107.175**  
 pro Person

Einzelbelegung

  
**€221.965**  
 pro Person

Scenic Eclipse Grand Panorama Suite GP, Deck 6



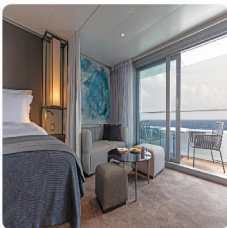
Doppelbelegung

  
 Nicht verfügbar

Einzelbelegung

  
 Nicht verfügbar

Scenic Eclipse Grand Deluxe Veranda Suite AD, Deck 8



Doppelbelegung

  
 Nicht verfügbar

Einzelbelegung

  
 Nicht verfügbar

Scenic Eclipse Veranda Suite C, Deck 6



Doppelbelegung

  
 Nicht verfügbar

Einzelbelegung

  
 Nicht verfügbar

Scenic Eclipse Grand Deluxe Veranda Suite BD, Deck 7



*Doppelbelegung*



Nicht verfügbar

*Einzelbelegung*



Nicht verfügbar

Scenic Eclipse Veranda Suite B, Deck 7



*Doppelbelegung*



Nicht verfügbar

*Einzelbelegung*



Nicht verfügbar

Scenic Eclipse Veranda Suite D, Deck 5



*Doppelbelegung*



Nicht verfügbar

*Einzelbelegung*



Nicht verfügbar

Scenic Eclipse Deluxe Veranda Suite BA, Deck 7



*Doppelbelegung*



Nicht verfügbar

*Einzelbelegung*



Nicht verfügbar



Scenic Eclipse Deluxe Veranda Suite DB, Deck 5



*Doppelbelegung*



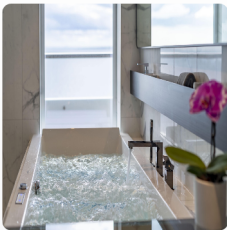
Nicht verfügbar

*Einzelbelegung*



Nicht verfügbar

Scenic Eclipse Spa Suite SB, Deck 9



*Doppelbelegung*



Nicht verfügbar

*Einzelbelegung*



Nicht verfügbar

Scenic Eclipse Two-Bedroom Penthouse Suite TP, Deck 9



*Doppelbelegung*



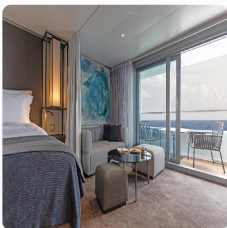
Nicht verfügbar

*Einzelbelegung*



Nicht verfügbar

Scenic Eclipse Grand Deluxe Veranda Suite DD, Deck 5



*Doppelbelegung*



Nicht verfügbar

*Einzelbelegung*



Nicht verfügbar

Scenic Eclipse Deluxe Veranda Suite DA, Deck 5



Doppelbelegung



Nicht verfügbar

Einzelbelegung



Nicht verfügbar



## Copenhagen, Denmark

Tag 1

Your Arctic expedition begins in Copenhagen, Scandinavian stylish capital. Stroll along picturesque canals, visit world-renowned museums, or simply soak in the atmosphere of this vibrant city.

Upon arrival, you'll be greeted and transferred to your luxury hotel, where you can unwind before the incredible journey ahead. Spend the evening indulging in Copenhagen's renowned culinary scene or take a leisurely walk through the historic streets as you anticipate the extraordinary voyage to come.

## Copenhagen Denmark > Kangerlussuaq, Greenland

- After breakfast, board your flight to Kangerlussuaq, Greenland, where your ultra-luxury Discovery Yacht awaits.
- Tag 2 The Captain and crew of Scenic Eclipse will welcome you on board your new home with a glass of Champagne. With only up to 200 guests on board, you'll experience an immersive, engaging cruise through this fascinating part of the world.
- Connect with fellow guests and the Discovery Team—specialists whose vast knowledge and expertise will enrich your understanding of the destinations you visit. From geology and marine biology to history and ecology, their insights are as captivating as their unique backstories.

## Sisimiut

- Greenland's second-largest town, Sisimiut is named after the fox dens that dot its landscape. Its charming streets, lined with colourful houses, lead to vast backcountry areas ripe for exploration. Beyond the town's tranquil facade lies a playground for outdoor enthusiasts, offering hiking trails, kayaking routes, and wildlife encounters. Dive into the town's cultural heritage through museums and cultural centres, discovering rich Inuit traditions and early settlers' legacies.
- Tag 3
- Discovery:**  
 Weather permitting, explore by Zodiac, kayak, submersible<sup>^</sup>, helicopter<sup>^</sup>, or join the Discovery Team on nature hikes.

## Ilulissat

- Wake up in Ilulissat, the "Iceberg Capital of the World." Home to the World Heritage-listed Ilulissat Icefjord, this stunning region showcases some of the most dramatic glacial landscapes on Earth. Formerly known as Jakobshavn, this town is famed for the spectacle of icebergs breaking away from the glacier, a sight emphasised by the rumbling sounds of calving ice from the Sermeq Kujalleq Glacier. Witnessing this natural phenomenon is a mesmerising experience, offering a glimpse into the dynamic beauty of Greenland.
- Tag 4
- Discovery:**  
 Weather permitting, explore by Zodiac, kayak, or go onshore to explore.

## Disko Bay Cruising

- Today, we'll cruise through the awe-inspiring Disko Bay, renowned for its stunning natural beauty. Pristine icebergs shimmer in the Arctic sunlight, while majestic glaciers carve their path through the dramatic landscape.
- Tag 5
- Take in the breathtaking views from the Observation Terrace or your private verandah, where you can fully appreciate the grandeur of this incredible region.

## Evighed Fjord / Eternity Glacier

- Glide through Evighed Fjord, aptly named "Eternity Fjord" for its endless panoramas of snow-draped peaks and dazzling glaciers, it's considered one of the most beautiful in Greenland. Stretching for more than 75 kilometres, you'll be awed by the endless fields of ice glittering under the sun. Tall, jagged peaks threaded with glaciers rise straight up out of the calm blue waters. Many of the glaciers are very active and you will likely hear chunks of ice calving away and collapsing loudly into the ocean. In Evighed Fjord, you will feel the beauty and power of nature all around you.
- Tag 6
- Discovery:**  
 Weather permitting, embark on Zodiac excursions with the expert Discovery Team and take in the breathtaking landscapes.

## At Sea

- Start your day with freshly squeezed juice, a steaming barista-made coffee, or tea delivered to your door by your butler. Today is the perfect opportunity to relax and unwind as we sail across the Davis Strait toward the Canadian Arctic.
- Tag 7 Take part in a wellness class at PURE: Yoga & Pilates Studio or indulge in a massage# at the Senses Spa. The Discovery Team's engaging lectures will share invaluable insights and foster a deeper connection to this extraordinary environment.
- Enjoy tonight's entertainment at the state-of-the-art theatre before you retreat to your ultra-luxury suite. Alternatively choose to dine in the comfort of your suite and have your evening nightcap brought by your own butler, choosing from a premium collection of wines, beers and spirits.

## Iqaluit, Baffin Island, Canada

- Tag 8 Welcome to Baffin Island, the fifth-largest island in the world and the Jewel of the Canadian High Arctic. This remarkable destination is home to stunning fjords, ice-capped mountains, and a thriving Inuit community. In Iqaluit, the cultural heart of Nunavut, explore traditional arts and crafts markets, visit the Nunatta Sunakkutaangit Museum and meet the Inuit people, an integral part of Iqaluit, a remote community at the head of Frobisher Bay.
- Tonight, dine around the world with your Discovery Yacht's extraordinary dining experiences, such as Sushi @ Koko's or fine French cuisine at Lumière (both available by on board reservation).

## Monumental Island > Lady Franklin Island

- Today, witness Arctic wildlife at two of Canada's most remote and pristine islands. We'll visit Monumental Island, a renowned haven for walrus. Explore the shoreline by Zodiac, keeping an eye out for these fascinating creatures. There's also a chance to spot polar bears from a respectful distance.
- Tag 9 Later, we'll arrive at Lady Franklin Island, best known for its huge vertical cliffs of Archean rock, a breathtaking gem along the rugged, wildlife-rich southern coast of Baffin Island.
- With expert guidance from the Discovery Team, you'll uncover exclusive insights into the captivating wildlife and geological wonders that make this destination truly unforgettable.
- Discovery:**  
 Based on the weather conditions, your Captain and Discovery Team will map out the optimal sites and activities to explore.

## Lower Savage Islands

- Tag 10 At the southeast tip of Baffin Island, you'll find the Lower Savage Islands. A labyrinth of rugged channels and towering cliffs, these islands are a sanctuary for Arctic wildlife. Their rocky terrain is home to polar bears, Arctic foxes, walruses, and seals, as well as thriving seabird colonies. A maze of channels winds through the islands, offering outstanding Zodiac cruising opportunities.
- Discovery:**  
 Based on the weather conditions, your Captain and Discovery Team will map out the optimal sites and activities to explore.

## At Sea

After days of exploration, spend time relaxing in your spacious suite. A Sea Day aboard your Discovery Yacht provides the perfect opportunity to relax, enjoy the Sense Spa# and socialise with fellow guests.

Tag 11

The Observation Lounge and Terrace occupies a commanding position at the bow of the ship on Deck 5 and is the perfect place for a specialty tea or coffee while reading a book, playing a board game and watching the world float by. If you're looking for some quiet reflection or a bit of respite, nestle into one of the cabanas on Deck 10. With a freshly squeezed juice or a refreshing spritz depending on your mood, enjoy the expansive sea views with your complimentary binoculars found in your suite.

Our Discovery Team will captivate you with insightful talks on the local wildlife and history.

Join them on deck as we navigate the icy, fast-moving waters of the Hudson Strait, a vital waterway connecting Hudson Bay to the Atlantic Ocean. Known for its stunning landscapes and challenging currents, this stretch of water offers a unique opportunity to experience the raw beauty and power of the Arctic.

## Kinngait (Cape Dorset), Baffin Island, Canada

Tag 12

Located in the stunning Canadian Arctic Archipelago on southwestern Baffin Island, this remarkable destination has been home to the Inuit for thousands of years. Today, it thrives as a world-renowned centre of creativity, where skilled artisans and craftspeople bring the Arctic's spirit to life through their exceptional artistry.

Check your Daily Program for today's scheduled activities in Cape Dorset.

## At Sea

Tag 13

Start your day with a fitness class, followed by a refreshing soak in the heated Vitality pool. After your invigorating start, treat yourself by calling your butler to deliver breakfast to your room.

As you sail through the vast expanse of Hudson Bay, keep an eye out for beluga whales, which thrive in its waters. This incredible region, known for its rich marine life, is also home to a variety of Arctic wildlife. While navigating its serene yet rugged waters, you might catch a glimpse of these graceful creatures as they swim alongside the ship, making for an unforgettable experience.

## At Sea

Tag 14

Today could be the day you visit the bridge where the Captain's open bridge policy welcomes guests to discover more about the technical capabilities of The World's First Discovery Yacht and see it in full operation. Plus, it's one of the best spots on the ship for taking in stunning views.

On the second day of sailing through Hudson Bay, the world's second-largest bay, you'll experience a sanctuary for Arctic wildlife. The waters are teeming with seals, and whales can appear at any time, while millions of seabirds fill the skies, making it a true paradise for nature lovers.

## Churchill, Canada

Tag 15

Located on the shores of Hudson Bay, Churchill is the "polar bear capital of the world." With rugged streets and vast, sweeping landscapes, there's a sense of being at the edge of the world. Surrounded by the untamed beauty of the northern wilderness, the stark solitude and endless expanses make this remarkable destination truly captivating.

This charming town offers a variety of exciting activities—be sure to check the daily program for the scheduled activities.

In the evening, share stories with your new friends over dinner in one of up to 10 all-inclusive dining experiences on board your Discovery Yacht.

## Churchill

Tag 16

With extra time to enjoy Churchill's unique landscapes, wildlife, and cultural heritage, be immersed in the spirit of this remote Arctic town. Through its stunning landscapes and rich history, you will have a great opportunity to discover more of what makes Churchill so unique.

## Churchill

Tag 17

Located on the shores of Hudson Bay, Churchill is famously known as the "polar bear capital of the world." With its rugged streets and vast, sweeping landscapes, offers a sense of being at the edge of the world. Surrounded by the untamed beauty of the northern wilderness, it's the stark solitude and endless expanses that make this remarkable destination truly captivating.

In the evening, share your travel notes with your new friends over dinner in one of up to 10 all-inclusive dining experiences on board your Discovery Yacht.

## At Sea

Tag 18

As Scenic Eclipse sails through Hudson Bay, start your day with a rejuvenating spa treatment or a guided stretch in the PURE: Yoga & Pilates Studio.

While navigating its serene yet rugged waters, you might catch a glimpse of a beluga whale, Arctic seal or the elusive polar bear as they swim alongside the ship, making for an unforgettable experience.

Join the evening recap, where the Discovery Leader will share exciting details about the upcoming days as your Discovery Yacht explores the Nunavut region.

Tonight, choose to dine in the comfort of your suite and have your evening nightcap brought by your butler.

## Digges Island, Nunavut, Canada

Tag 19

Where Hudson Strait meets the northeastern Hudson Bay, the remote Digges Islands rise with dramatic rocky cliffs, creating the perfect sanctuary for seabirds. This untamed wilderness is also home to thriving walrus colonies and the majestic polar bear. As we navigate the waters by zodiac, we'll keep watch for these incredible Arctic icons, always from a safe and respectful distance, but close enough for an unforgettable encounter.

### Discovery:

Weather permitting, embark on thrilling Zodiac excursions with the expert Discovery Team.

## Cap Wolstenholme, Nunavut > Erik Cove, Nunavut

Tag 20

Cap Wolstenholme, a striking stretch of cliffs along Nunavut's Hudson Strait, features a sheer, towering rampart on its western side. In summer, this dramatic headland transforms into a bustling nesting ground for swarms of thick-billed murre.

Sail to Erik Cove, surrounded by towering cliffs and floating icebergs, presenting a breathtaking and pristine landscape. Watch for seals, whales and a wide variety of seabirds in this wildlife haven. There's also the possibility of spotting polar bears.

### Discovery:

Both destinations are perfect for exploring by Zodiac, offering access to unique ecosystems and opportunities to observe Arctic wildlife in their natural habitats.

## At Sea

Tag 21 After a busy start to your Arctic journey, some relaxation could be on the menu today. Curl up with a book or your binoculars on the cabanas on Deck 10, join a Pilates class or guided stretching session in the PURE: Yoga & Pilates Studio, or enjoy a long lunch with new friends at Azure Bar & Cafe.

Join engaging lectures in the state-of-the-art theatre and be captivated by the expertise and enthusiasm of the Discovery Team as they share their profound knowledge and passion for this region, offering invaluable insights and fostering a deeper connection to this extraordinary environment.

## Hudson Strait, Nunavut

Tag 22 The strait from Hudson Bay to the Atlantic Ocean was navigated by Henry Hudson in 1610; today it bears his name. You'll trace his path between Baffin Island and Nunavik to a spectacular wildlife haven. The islands are teeming with bird species while the surrounding waters are full of marine mammals. You may spot polar bears, seals, walruses and whales during your visit to this thriving ecological hotspot. While the island's rugged cliffs are too harsh for humans, they offer an ideal nesting site for Murres, who build their homes on the narrow ledges.

### Discovery:

Weather permitting, embark on thrilling Zodiac excursions with the expert Discovery Team today. Paddle through serene waters by kayak or step ashore for an unforgettable exploration with your expert guides.

## Saglek Fjord, Newfoundland

Tag 23 Today, prepare for an unforgettable experience as your Discovery Yacht journeys through Saglek Fjord, a hidden Arctic paradise nestled in the rugged wilderness of Newfoundland. Known for its dramatic cliffs, pristine waters, and untouched landscapes, this remote fjord offers a unique opportunity to explore the raw beauty of Canada's northern coastline. Keep your eyes peeled for abundant wildlife, from playful seals to soaring seabirds, and immerse yourself in the natural splendour of one of the world's most pristine environments. This expedition is a true escape into nature.

## At Sea

Tag 24 Enjoy a day of pure ultra-luxury and breathtaking views as you sail the stunning Labrador Sea. Relax aboard your elegant Discovery Yacht, where the endless horizon meets the rugged beauty of the Arctic waters. Watch for wildlife as you glide through these pristine waters—spotting marine mammals, seabirds, and perhaps even the majestic icebergs that drift by.

Immerse yourself in captivating lectures at the state-of-the-art theatre, where the Discovery Team will share their expert knowledge and passion for the region. With their engaging insights, you'll gain a deeper understanding and connection to this extraordinary environment.

## Rigolet, Newfoundland

Tag 25 Experience the charm of Rigolet, a picturesque town with a deep Inuit heritage on Labrador's North coast. Engage with local artisans, learn about traditional craftsmanship. For wildlife lovers, this is a dream destination, and keep watch for wildlife, including whales and Arctic foxes, as you explore this fascinating region.

## Saint Anthony, Newfoundland

Tag 26 Nestled on Newfoundland's Great Northern Peninsula, St. Anthony is a charming town with a rich maritime heritage. It served as the base for the Grenfell Mission, established in the early 20th century to provide medical services to remote communities. The town's coastal waters are renowned for whale watching opportunities, offering sightings of majestic marine mammals during their migratory seasons. Additionally, the nearby L'Anse aux Meadows National Historic Site, a UNESCO World Heritage Site, marks the only known Norse village in North America, dating back to around 1000 AD.



## St. John's, Newfoundland

Tag 27

Welcome to St. John's, the vibrant capital of Newfoundland and Labrador, celebrated as North America's oldest city. Its downtown area is characterized by brightly coloured heritage buildings lining Water and Duckworth Streets, housing an array of boutiques, restaurants, and galleries. A visit to Signal Hill National Historic Site offers panoramic views of the city and harbour. This historic landmark is where Guglielmo Marconi received the first transatlantic wireless signal in 1901.

### At Sea

Tag 28

Enjoy a day of relaxation aboard your Discovery Yacht as you sail through the North Atlantic. Indulge in the 550sqm Senses Spa, reinvigorating your mind, body and soul. Pamper yourself with holistic ESPA treatments#, including massages and facials or experience alternative therapies such as Japanese shiatsu and Tibetan bowl sound healing . Engage in enriching lectures and discussions led by our expert Discovery Team, offering deeper insights into the regions visited and the natural wonders encountered.

## Halifax, Nova Scotia

Tag 29

Halifax, Nova Scotia's dynamic capital, has long been tied to the sea. It has one of the largest and deepest ice-free harbours in the world and has been an important military and commercial port for more than 250 years. Today, you can learn about its rich cultural heritage through the city's many museums and historical sites. Wander through bustling downtown streets and picturesque waterfronts, savouring maritime delights and charming cafes. A late departure gives you time to sample the city's famed live music scene, which takes over historic pubs and cosy venues every night of the week.

### At Sea

Tag 30

After days of exploration, spend time relaxing in your spacious suite. A sea day aboard your Discovery Yacht provides the perfect opportunity to relax, socialise with fellow guests and watch stunning environments pass by.

Visit the bridge, made accessible through the Captain's open bridge policy. Guests are welcome any time to learn more about the technical abilities of The World's First Discovery Yacht.

Make sure you book a treatment# at the tranquil Senses Spa before your expedition ends. Perhaps an ESPA facial or massage or an alternative therapy including Ayurvedic massage.

## New York, USA

Tag 31

Cruise past the iconic Statue of Liberty and the breathtaking Manhattan skyline as you cruise into New York. From the bright lights of Broadway to leafy Central Park and the glitzy boutiques of Fifth Avenue, the Big Apple is an unmissable experience.

Spend the afternoon exploring this global city. Walk the bustling streets of Lower Manhattan's financial district, the charming corners of Greenwich Village, and uncover New York's tapestry of culture, culinary delights, and architectural splendour. In the metropolis that never sleeps, there's something for everyone. Return for your final night on board your ultra-luxury Discovery Yacht.

## New York, USA

Your unforgettable Expedition Voyage ends today in New York City. Savour one last luxurious breakfast on board your 6-star Discovery Yacht before saying farewell to the crew and new friends who have shared this remarkable journey with you.

Please book your flight to depart out of New York City after 12:00 PM.

Tag 32

#Senses Spa treatments and services at additional cost. Daily activities may be subject to change; please consult your Daily Wonder for updates. +All drinks on board, including those stocked in your mini bar, are included, except for a very small number of rare, fine and vintage wines, Champagnes and spirits. Specialty restaurants require a reservation, enquire on board. ^Flights on board our two helicopters and submersible experiences are at additional cost, subject to regulatory approval, availability, weight restrictions, medical approval and weather conditions.

### **Helicopter and Submersible not operational in Greenland, Canada and the US.**

The itinerary is a guide only and may be amended for operational reasons. As such Scenic cannot guarantee the voyage will operate unaltered from the itinerary stated above. Please refer to our terms and conditions for further information.

#### **Im Preis inbegriffen**

- Services und Annehmlichkeiten an Bord
- Maximal 229 Gäste an Bord (200 in den Polarregionen)
- Großzügige Suiten mit privater Veranda 2:1-Verhältnis
- Gäste- und Butlerservice für jeden Gast
- Zehn kulinarische Erlebnisse in neun Gourmet-Menues – von gemütlicher Atmosphäre bis zum eleganten Fine Dining
- Auswahl an Premium-Markengetränken mit über 101 Whiskysorten
- Scenic Discovery Ausflüge mit dem Zodiac
- Komplettes Kajakprogramm und Stand-up-Paddle-Boarding
- Kostenloser Expeditionsarka und Wasserflasche sowie die Nutzung von speziellen Polartiefeln
- Interessantes Vortrags- und Bildungsprogramm mit Experten an Bord
- Spezielle Observation Lounge und Terrasse für die beste Aussicht
- Swarovski-Teleskope an Deck sowie Ferngläser in der Suite, damit Sie keinen aufregenden Momente verpassen
- Senses Spa\*\* auf 551 m2 mit Fitnesscenter, Yoga- und Pilatesstudio
- Außen-Vitalpools nachskandinavischem Vorbild
- Modernes Theater mittäglichem Unterhaltungs- und Bildungsangebot
- WLAN inclusive
- Inlandsflüge inkl. Gebühren
- Flughafentransfers
- Trinkgelder an Bord und an Land

---

#### **Nicht im Preis inbegriffen**

- Internationale Flüge, sofern nicht angegeben
- Reiseversicherungen
- Visa- oder Passgebühren (falls erforderlich)
- persönliche Ausgaben (Einkäufe, optionale Ausflüge)
- sonstige im Programm nicht genannte Leistungen

## Ihr Schiff

Ihr Schiff ist die "Scenic Eclipse". Ausführlich stellen wir Ihnen dieses Schiff auf unseren Schiffseiten vor. [Ausführliche Informationen](#) zu diesem Schiff.

Passagiere

199

Bordsprachen



Eisklasse

PC-6

Special

Helikopter

