

IHRE REISE

Chilenische Fjorde und das Weddell Meer

Reisetermin

13.11.2027 - 06.12.2027

Reisedauer

24 Tage

Reederei / Schiff

Scenic Eclipse / SCENIC Luxury Cruises & Tours



Scenic Eclipse Deluxe Veranda Suite CA, Deck 6



Doppelbelegung



€28.265

pro Person

Einzelbelegung



€63.395

pro Person

Scenic Eclipse Deluxe Veranda Suite AA, Deck 7



Doppelbelegung



€30.680

pro Person

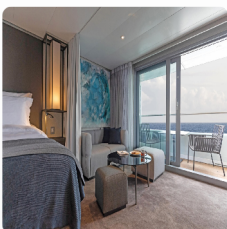
Einzelbelegung



€68.225

pro Person

Scenic Eclipse Grand Deluxe Veranda Suite CD, Deck 6



Doppelbelegung



€32.175

pro Person

Einzelbelegung



€71.215

pro Person

Scenic Eclipse Spa Suite S, Deck 8



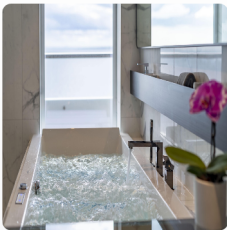
Doppelbelegung


€ 40.570
 pro Person

Einzelbelegung


€ 88.005
 pro Person

Scenic Eclipse Spa Suite SA, Deck 9



Doppelbelegung


€ 41.030
 pro Person

Einzelbelegung


€ 88.925
 pro Person

Scenic Eclipse Panorama Suite P, Deck 8



Doppelbelegung


€ 68.170
 pro Person

Einzelbelegung


€ 143.205
 pro Person

Scenic Eclipse Grand Panorama Suite GP, Deck 6



Doppelbelegung


€ 69.550
 pro Person

Einzelbelegung


€ 145.965
 pro Person

Scenic Eclipse Owners Penthouse Suite OP, Deck 9



Doppelbelegung


€83.350
 pro Person

Einzelbelegung


€173.565
 pro Person

Scenic Eclipse Veranda Suite C, Deck 6



Doppelbelegung


 Nicht verfügbar

Einzelbelegung


 Nicht verfügbar

Scenic Eclipse Veranda Suite A, Deck 8



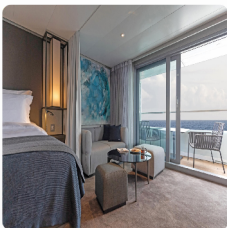
Doppelbelegung


 Nicht verfügbar

Einzelbelegung


 Nicht verfügbar

Scenic Eclipse Grand Deluxe Veranda Suite AD, Deck 8



Doppelbelegung


 Nicht verfügbar

Einzelbelegung


 Nicht verfügbar

Scenic Eclipse Grand Deluxe Veranda Suite BD, Deck 7



Doppelbelegung



Nicht verfügbar

Einzelbelegung



Nicht verfügbar

Scenic Eclipse Veranda Suite B, Deck 7



Doppelbelegung



Nicht verfügbar

Einzelbelegung



Nicht verfügbar

Scenic Eclipse Veranda Suite D, Deck 5



Doppelbelegung



Nicht verfügbar

Einzelbelegung



Nicht verfügbar

Scenic Eclipse Deluxe Veranda Suite BA, Deck 7



Doppelbelegung



Nicht verfügbar

Einzelbelegung



Nicht verfügbar

Scenic Eclipse Deluxe Veranda Suite DB, Deck 5



Doppelbelegung



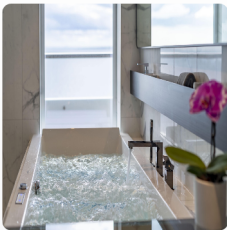
Nicht verfügbar

Einzelbelegung



Nicht verfügbar

Scenic Eclipse Spa Suite SB, Deck 9



Doppelbelegung



Nicht verfügbar

Einzelbelegung



Nicht verfügbar

Scenic Eclipse Two-Bedroom Penthouse Suite TP, Deck 9



Doppelbelegung



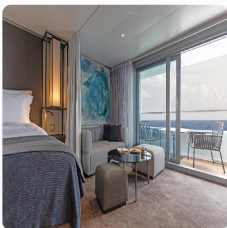
Nicht verfügbar

Einzelbelegung



Nicht verfügbar

Scenic Eclipse Grand Deluxe Veranda Suite DD, Deck 5



Doppelbelegung



Nicht verfügbar

Einzelbelegung



Nicht verfügbar

Scenic Eclipse Deluxe Veranda Suite DA, Deck 5



Doppelbelegung



Nicht verfügbar

Einzelbelegung



Nicht verfügbar



Valparaíso, Chile

World Heritage-listed Valparaíso is known for its vibrant cultural scene, colourful hillside buildings, and bohemian vibe. With rich theatre, music, and street art, the city's cobbled streets are filled with casual eateries and bars offering craft beer and pisco (pisco and coke).

Tag 1

Your journey into wonder begins with a warm greeting from the Captain and crew as you step on board Scenic Eclipse. Sip on a glass of Champagne and explore your luxurious suite, then join your fellow guests at the Sky Bar and toast to the start of an unforgettable voyage.

Please book your flight to arrive into Santiago prior to 12:00 PM.

At Sea

Tag 2

Enjoy a sleep-in lulled by the rhythm of the ocean. Perhaps ask your butler to deliver breakfast to your spacious suite or meet fellow guests in the alfresco Yacht Club.

Today, join an introductory presentation about your expedition voyage by the Discovery Team in the state-of-the-art theatre. Feel the excitement as they explain how your Zodiac and other Discovery Excursions will work in the coming days. The theatre is where you can watch talks, lectures, movies and documentaries during the day. At night, enjoy world-class productions from musical theatre and cabaret to pop music, dance and fun interactive game shows.

Niebla, Chile

Tag 3

Arrive in Niebla, home to the 17th century Niebla Fortress. Nearby Valdivia is a vibrant and tenacious university town that has endured various challenges such as attacks, floods, fires, and the catastrophic earthquake of 1960—the strongest ever recorded—which nearly submerged the city.

Spend the afternoon at leisure in your luxurious suite or head for the spacious and elegant Scenic Bar Lounge to enjoy your beverage of choice, whether it be aged whiskey—there are over 130 varieties—or a glass of wine. Then choose from up to 10 world-class dining experiences for dinner.

Puerto Montt, Chile

Tag 4

This morning enjoy cruising through Relocavi Sound before arriving in the Chilean Lake District, Puerto Montt. It sits near the end of the Pan-American Highway – this epic stretch of road begins in Alaska and continues to Ushuaia in Argentina. Puerto Montt is the gateway to the Andean Alps and Patagonian fjords; around the corner lie gorges, far-flung islands, snow-capped volcanoes, and windswept shores.

During downtime on the ship, you may wish to visit the gym for an invigorating workout or the studio for a Pilates class, some guided stretching or aerial yoga.

Castro, Isla Chiloé

Tag 5

Visit Castro, located on the island of Chiloé. This is a place of exquisite natural beauty, flanked by a fjord and home to Chiloé National Park, where an abundance of wildlife species thrives on the west coast. Catch a glimpse of the local penguin colony, comprising Magellanic and Humboldt penguins which migrate to the region. Stroll through the city streets and sample local delicacies, such as the Chiloé potato, and view the city's many World Heritage-listed churches, known for their ecclesiastical wooden architecture. After a day well spend exploring Castro enjoy the beautiful scenery while cruising the Gulf of Corcovado.

At Sea

Tag 6

After days of exploration, spend time relaxing in your spacious suite. Delve into an insightful conversation with one of the Discovery Team members after an educational lecture in the state-of-the-art theatre – comprised of up to 20 members, this team of geologists, historians, ornithologists, marine biologists, and glaciologists is at the heart of your Expedition Voyage. Alternatively, simply watch as your Discovery-Yacht sails through extraordinary scenery like the Messier Channel and relax in a cabana on Deck 10 or in the privacy of your suite's verandah.

Join your new friends over a relaxed meal at the Azure Bar & Café. Graze the day away with included beverages as Scenic's culinary team goes to the Nth Degree to ensure every dining experience is personalised.

Puerto Eden > Pio XI Glacier (Inner Fjords)

Tag 7

Cruise through the Inner Fjords and the English Narrows, which is home to remote Puerto Eden. This is the only settlement inside the Chilean Inside Passage, a region with a mountainous terrain and a thriving Magellanic sub-polar forest. You will be able to learn about the ancient Mapuche culture, navigate the town's intricate wooden boardwalks and see its native wildlife.

You will also see Pio XI Glacier, which is nestled within the Bernardo O'Higgins National Park and spans the size of Santiago. Also known as Brüggen Glacier, this exceptional wonder is the sole glacier on Earth that is expanding daily.

Cruising Strait of Magellan

Tag 8

Cruise the historic Strait of Magellan, which links the Atlantic and Pacific Oceans. The primary passage for seafaring transport before the Panama Canal, you'll follow the journeys of early explorers such as Ferdinand Magellan and Sir Francis Drake.

Learn about the rich maritime history of these legendary waterways from your expert Discovery Team. Perhaps later head to the bridge for one of the best viewing areas of the ship. Thanks to the Captain's open bridge policy, guests are welcome any time to learn more about the technical abilities of The World's First Discovery Yacht and see it in full operation.

During the day, the theatre comes alive with captivating lectures from Discovery Team. Don't forget to check the Daily Program on your TV for timing—you won't want to miss these inspiring sessions!

Punta Arenas, Chile

Tag 9

Punta Arenas is located at the southernmost point of Chile and serves as the gateway into Antarctica as well as Torres del Paine National Park. Overlooking the Strait of Magellan, its prime position served as a haven for ships during the California Gold Rush. The city will captivate you with its clean air, sophisticated European architecture and is renowned for kayaking. Nearby Magdalena Island is the breeding ground of the Magellanic penguin.

Back on board, you may wish to book a treatment# at the tranquil Senses Spa. Perhaps indulge with an ESPA facial# or an alternative therapy including Ayurvedic massages#.

Chilean Fjords

Tag 10

Venture deep into the heart of Chilean Fjords as your Discovery Yacht navigates the untouched Agostini Fjord, a sanctuary of raw, natural beauty. Towering peaks rise dramatically above glacial-blue waters, leading to the awe-inspiring Agostini Glacier — a shimmering cascade of ice spilling from the rugged Darwin Mountain Range. As you glide through this remote wonderland, keep your eyes peeled for playful seals, soaring seabirds, and majestic humpback whales in their pristine habitat.

Scenic Discovery:

Join your Discovery Team to get close to southern Chile's coastline in a zodiac. This is the ultimate way to spot wildlife – on land and in the water – while gaining in-depth knowledge of the landscape thanks to your talented, eagle-eyed guide.

Chilean Fjords

Tag 11

Today you'll cruise to Seno Garibaldi and Seno Pia, home to active glaciers in glassy rivers framed by spectacular mountain views. This area is a World Heritage-listed Biosphere Reserve, and its rich waters are home to seals, sea lions and seabirds, including the impressive Andean condor.

Watch the spectacular scenery slip by as you relax in a cabana on Deck 10 this afternoon. Alternatively, ask your butler to bring afternoon tea to your suite and relax on your private verandah.

Scenic Discovery:

Take the opportunity to explore your destination through a variety of exciting activities organised by the Discovery Team. During the evening recap, the Discovery Leader will share insights from the day's excursions and provide a preview of what's to come.

Cape Horn

Tag 12

Cruise through the iconic waters of Cape Horn, where the Atlantic and Pacific Oceans meet at the southernmost point of South America. The collision of these two oceans is a spectacular display of nature's force and a great place to spot sea lions, penguins and whales.

You will also cruise through the scenic Beagle Channel, named after the ship that carried Charles Darwin on his five-year discovery journey. Admire the dramatic views of the Andean mountains from the comfort of your ultra-luxury Discovery Yacht.

Ushuaia

Tag 13

Nestled between the snow-capped peaks of the Andes and the icy waters of the Beagle Channel, Ushuaia is a city of rugged beauty. Known as the southernmost city in the world, this remote outpost serves as the gateway to Antarctica and Patagonia's breathtaking wilderness.

A place where dramatic landscapes meet rich exploration history, this extraordinary destination marks the beginning of an unforgettable journey to the end of the Earth.

At Sea

Tag 14

Enjoy breakfast in your suite as your ultra-luxury Discovery Yacht navigates the legendary Drake Passage bound for Antarctica. Take in the vast expanse of the Southern Ocean as moment brings you closer to an unforgettable adventure.

Feel the excitement building up as the Discovery Team shares with you all the details on how your Zodiac, helicopter[^], submarine[^] and other discovery expeditions will work. Get familiar with the team and your polar equipment – your expedition kit includes an expedition parka and water bottle that are yours to take home, plus the use of specialised polar boots, trekking poles and specific equipment you need for kayak and paddleboard excursions. Between landings, your outdoor gear will be stored in a personal locker in our convenient Discovery Centre. Prepare yourself for unparalleled 'pinch-me' moments, and be exposed to the unpredictability of the region, with your expert team deciding the course of action in the coming days.

The team will make every attempt to have many landings and Discovery Excursions, including Zodiac tours, kayaking and optional helicopter[^] flights and submarine[^] dives.

Antarctica

Tag 15

Today you will enter Antarctic waters, an unpredictable but stunningly beautiful environment. Put on your complimentary polar parka and head to the Observation Deck to spot icebergs for the first time – it's a feeling that will stay with you forever.

Watch out for whale blows in the distance. Your Discovery Team is available to provide insightful information.

Be sure to check your daily program for the essential biosecurity and boot fitting schedule. And join the fascinating enrichment lecture on marine and seabird life – a captivating experience that will enhance your knowledge and connection to the natural world around you.

Antarctica

Tag 16

Slide open the floor-to-ceiling doors of your verandah suite to see icebergs sculpted by nature and glacial mountains rising from the ocean. Antarctica is a birdwatcher's delight, home to a variety of species, so keep your eyes peeled for wandering albatrosses, shearwaters, giant petrels and more.

Due to the extraordinary nature of the region, excursions throughout your Expedition Voyage are dependent on weather conditions. Your experienced Captain and Discovery Leader, who have made countless journeys to Antarctica, will use their expertise to design a bespoke voyage, making the most of your time in this spectacular destination.

Scenic Discovery:

Daily experiences may include cruising on Zodiacs, stepping ashore to view vast penguin rookeries or historic huts, and kayaking or paddle boarding around icebergs. Wherever your voyage takes you, you will have countless "pinch me" moments.

Antarctica

Tag 17

Start your day with freshly squeezed juice, steaming barista-made coffee or tea delivered to your door by your butler. Then set out on Zodiac excursions to explore breathtaking glaciated bays, tranquil channels and pristine landing sites. As you trek across the Antarctic wilderness, meet the adorable chinstrap, Adélie and gentoo penguins that inhabit this magical region

Small groups offer the best way to experience an environmentally sensitive destination like Antarctica. Guests will board the zodiacs according to their designated colour, where our expert polar Discovery Team will guide them, ensuring an unforgettable and unique adventure.

Antarctica

Tag 18

Various species of penguins can be found in Antarctic and the sub-Antarctic region, including Adélie, Chinstrap, Gentoo, and the very rare Emperor. Guided by the expert Discovery Team, you'll witness colonies up close; hear their calls and watch as they clumsily waddle along and interact with each other.

Whales are another majestic creature you may encounter, whether a minke, a humpback or an Orca. Watch them up close in a kayak or a Zodiac with the Discovery Team or observe them from the comfort of your ultra-luxury Discovery Yacht. However, you see them, it's a breathtaking experience.

Scenic Discovery:

Ask your expert Discovery Leader for photography tips so you can best capture the incredible wildlife and landscape around you.

Antarctica

Tag 19

From the moment it was discovered, Antarctica has held an irresistible allure for intrepid adventurers. The bold exploits of legendary explorers like Scott, Shackleton, and Amundsen have fueled its mystique, inspiring generations to venture into this untamed wilderness.

On this unforgettable day, you'll cruise past Antarctica's stunning icy mountains before stepping ashore by Zodiac to immerse yourself in the polar wilderness. With ample time to explore, this voyage ensures you experience the magic of this awe-inspiring landscape up close.

Back on board, enjoy a specialty tea or coffee in the Observation Lounge and take in the views through Swarovski telescopes.

Antarctica

Tag 20

In the untouched silence of this frozen wilderness, nature's rare sounds become unforgettable—whether it's the endearing chatter of penguins squabbling over prized pebbles or the thunderous roar of a glacier calving into the sea.

Towering glaciers provide one of the most awe-inspiring spectacles of your journey, with the chance to witness massive ice formations breaking away, creating brand-new icebergs before your eyes—a moment of pure wonder.

On board, explore some of your Discovery Yacht's indulgent spaces, from the welcoming Observation Lounge to the expansive Senses Spa#. Choose one of up to 10 world-class dining experiences on board tonight.

Antarctica

Tag 21

On your ultra-luxury yacht, every moment is crafted for both comfort and connection. Our inviting lounge provides the perfect setting to unwind and share unforgettable experiences with like-minded travellers.

For those craving adventure, the legendary Polar Plunge offers a thrilling rush—an unforgettable dive into icy waters, expertly coordinated by the Expedition Leader and Captain.

If you prefer to stay warm, find a prime viewing spot and enjoy the spectacle as fellow guests take the plunge, then join them for a toast with a glass of whiskey or a steaming cup of hot chocolate.

Scenic Discovery:

Glide past towering icebergs on a zodiac, step onto untouched white snow, and soar over vast mountain ranges. This is one of the world's few remaining pristine wildernesses, awaiting your exploration.

At Sea

Tag 22

As you cruise back across the Drake Passage toward South America, take this time to indulge in the ultra-luxury comforts of your Discovery Yacht and reflect on the awe-inspiring moments you've experienced.

Start your day with an invigorating workout in the state-of-the-art gym, a guided Pilates session, or a moment of relaxation in the PURE: Yoga & Pilates Studio.

As evening arrives, unwind in the elegant Scenic Lounge Bar, where you can toast to your expedition with a perfectly aged whiskey, a glass of fine wine, or a flute of French Champagne—all part of Scenic's truly all-inclusive ultra-luxury philosophy.

At Sea > Ushuaia

Tag 23

Make sure you book a treatment# at the tranquil Senses Spa before your expedition ends. Perhaps an ESPA facial or massage# or an alternative therapy including Ayurvedic massage or Japanese shiatsu. Afterwards, hold on to that feeling of calm for a while longer in the Zen-like space of the Vitality Lounge.

On your last night onboard for dinner choose from Koko's Asian Fusion Sushi @ Koko's (available by on board reservation) to watch the chefs at work or enjoy the spectacle of Teppanyaki-style dining inspired by the markets of Asia at Night Market @ Koko's (available by on board reservation).

Ushuaia, Argentina > Buenos Aires

This morning, bid farewell to your expert crew and fellow travellers as your extraordinary journey comes to an end. After a final indulgent breakfast on board, disembark in Ushuaia and board your flight to Buenos Aires, carrying with you memories of an unforgettable adventure in the pristine landscapes of Antarctica.

Tag 24

Please book your flight to depart out of Buenos Aires after 09:30 PM.

#Spa treatments at additional cost. +All drinks on board, including those stocked in your mini bar, are included, except for a very small number of rare, fine and vintage wines, Champagnes and spirits. Specialty restaurants require a reservation, enquire on board. ^Flights on board our two helicopters and submersible experiences are at additional cost, subject to regulatory approval, availability, weight restrictions, medical approval and weather conditions. Sightings cannot be guaranteed.

The itinerary is a guide only and may be amended for operational reasons. As such Scenic cannot guarantee the voyage will operate unaltered from the itinerary stated above. Please refer to our terms and conditions for further information.

Im Preis inbegriffen

- Services und Annehmlichkeiten an Bord
- Maximal 229 Gäste an Bord (200 in den Polarregionen)
- Großzügige Suiten mit privater Veranda 2:1-Verhältnis
- Gäste- und Butlerservice für jeden Gast
- Zehn kulinarische Erlebnisse in neun Gourmet-Menues – von gemütlicher Atmosphäre bis zum eleganten Fine Dining
- Auswahl an Premium-Markengetränken mit über 101 Whiskysorten
- Scenic Discovery Ausflüge mit dem Zodiac
- Komplettes Kajakprogramm und Stand-up-Paddle-Boarding
- Kostenloser Expeditionsarka und Wasserflasche sowie die Nutzung von speziellen Polartiefeln
- Interessantes Vortrags- und Bildungsprogramm mit Experten an Bord
- Spezielle Observation Lounge und Terrasse für die beste Aussicht
- Swarovski-Teleskope an Deck sowie Ferngläser in der Suite, damit Sie keinen aufregenden Momente verpassen
- Senses Spa** auf 551 m² mit Fitnesscenter, Yoga- und Pilatesstudio
- Außen-Vitalpools nachskandinavischem Vorbild
- Modernes Theater mittäglichem Unterhaltungs- und Bildungsangebot
- WLAN inclusive
- Inlandsflüge inkl. Gebühren
- Flughafentransfers
- Trinkgelder an Bord und an Land

Nicht im Preis inbegriffen

- Internationale Flüge, sofern nicht angegeben
- Reiseversicherungen
- Visa- oder Passgebühren (falls erforderlich)
- persönliche Ausgaben (Einkäufe, optionale Ausflüge)
- sonstige im Programm nicht genannte Leistungen

Ihr Schiff

Ihr Schiff ist die "Scenic Eclipse". Ausführlich stellen wir Ihnen dieses Schiff auf unseren Schiffseiten vor. [Ausführliche Informationen](#) zu diesem Schiff.

Passagiere
199

Bordsprachen


Eisklasse
PC-6

Special
Helikopter

