

IHRE REISE

Ultimative Antarktis & die Fjorde Südchiles

Reisetermin
17.02.2027 - 17.03.2027

Reisedauer
29 Tage

Reederei / Schiff
Scenic Eclipse / SCENIC Luxury Cruises & Tours



Scenic Eclipse Deluxe Veranda Suite DA, Deck 5



Doppelbelegung



€34.660

pro Person

Einzelbelegung



€68.765

pro Person

Scenic Eclipse Deluxe Veranda Suite DB, Deck 5



Doppelbelegung



€34.660

pro Person

Einzelbelegung



€68.765

pro Person

Scenic Eclipse Deluxe Veranda Suite CA, Deck 6



Doppelbelegung



€34.660

pro Person

Einzelbelegung



€68.765

pro Person

Scenic Eclipse Deluxe Veranda Suite BA, Deck 7



Doppelbelegung


€35.535
 pro Person

Einzelbelegung


€70.515
 pro Person

Scenic Eclipse Deluxe Veranda Suite AA, Deck 7



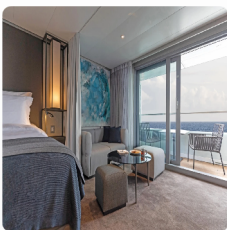
Doppelbelegung


€35.535
 pro Person

Einzelbelegung


€70.515
 pro Person

Scenic Eclipse Grand Deluxe Veranda Suite DD, Deck 5



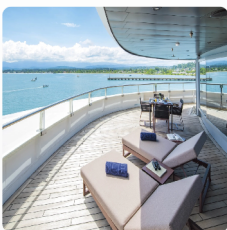
Doppelbelegung


€36.155
 pro Person

Einzelbelegung


€71.755
 pro Person

Scenic Eclipse Grand Panorama Suite GP, Deck 6



Doppelbelegung


 Nicht verfügbar

Einzelbelegung


 Nicht verfügbar

Scenic Eclipse Panorama Suite P, Deck 8



Doppelbelegung



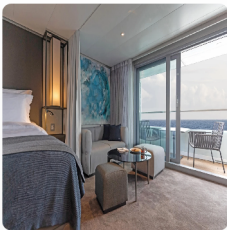
Nicht verfügbar

Einzelbelegung



Nicht verfügbar

Scenic Eclipse Grand Deluxe Veranda Suite CD, Deck 6



Doppelbelegung



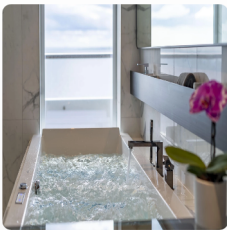
Nicht verfügbar

Einzelbelegung



Nicht verfügbar

Scenic Eclipse Spa Suite S, Deck 8



Doppelbelegung



Nicht verfügbar

Einzelbelegung



Nicht verfügbar

Scenic Eclipse Veranda Suite B, Deck 7



Doppelbelegung



Nicht verfügbar

Einzelbelegung



Nicht verfügbar

Scenic Eclipse Veranda Suite A, Deck 8



Doppelbelegung



Nicht verfügbar

Einzelbelegung



Nicht verfügbar

Scenic Eclipse Veranda Suite D, Deck 5



Doppelbelegung



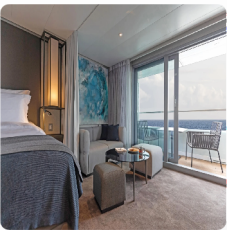
Nicht verfügbar

Einzelbelegung



Nicht verfügbar

Scenic Eclipse Grand Deluxe Veranda Suite BD, Deck 7



Doppelbelegung



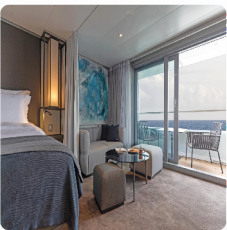
Nicht verfügbar

Einzelbelegung



Nicht verfügbar

Scenic Eclipse Grand Deluxe Veranda Suite AD, Deck 8



Doppelbelegung



Nicht verfügbar

Einzelbelegung



Nicht verfügbar

Scenic Eclipse Spa Suite SB, Deck 9



Doppelbelegung



Nicht verfügbar

Einzelbelegung



Nicht verfügbar

Scenic Eclipse Veranda Suite C, Deck 6



Doppelbelegung



Nicht verfügbar

Einzelbelegung



Nicht verfügbar

Scenic Eclipse Owners Penthouse Suite OP, Deck 9



Doppelbelegung



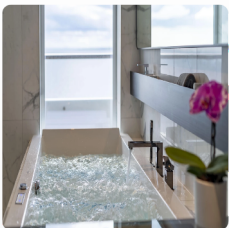
Nicht verfügbar

Einzelbelegung



Nicht verfügbar

Scenic Eclipse Spa Suite SA, Deck 9



Doppelbelegung



Nicht verfügbar

Einzelbelegung



Nicht verfügbar

Scenic Eclipse Two-Bedroom Penthouse Suite TP, Deck 9



Doppelbelegung



Nicht verfügbar

Einzelbelegung



Nicht verfügbar



Buenos Aires, Argentina

Tag 1

Welcome to Buenos Aires, where you'll have an overnight hotel stay. Perhaps plan to spend some time in the city, nicknamed the 'Paris of South America'. Resplendent with Belle Epoque buildings, sidewalk cafes and green spaces, there's the fiery passion of Latin America - a collective love for football, flame-cooked meats (asado) and the tango.

Some of the highlights are La Boca, a colourful, creative mecca with a must-do art walk, and San Telmo, a former aristocratic neighbourhood that was abandoned during a 19th-century epidemic. Mansions were turned into conventillos (shared housing), boutique hotels, antique shops, and tango clubs, exuding a captivating bohemian vibe.

Buenos Aires > Ushuaia

Tag 2

Fly from Buenos Aires to Ushuaia, the main island of Tierra del Fuego and the southernmost city in the world. The Captain and crew will warmly greet you as you board your ultra-luxury Discovery Yacht, Scenic Eclipse.

Toast the start of your once-in-a-lifetime expedition as you depart South America and cruise through the calm and scenic Beagle Channel, named so for the ship that carried Charles Darwin on his five-year discovery journey. Admire the dramatic views of the Andean mountains from the comfort of your private verandah or from the Observation Deck with its commanding view of the bow.

At sea

Tag 3

Wake up in your own time as we cruise across the Drake Passage, the infamous waterway that connects South America to Antarctica. Perhaps ask your butler for breakfast to be delivered to your spacious suite or meet fellow guests in the Yacht Club.

Today, join an introductory presentation about your polar expedition by the Polar Discovery Team in the state-of-the-art theatre. Feel the excitement building as they explain how your Zodiac and other Discovery Excursions will work in the coming days. The theatre is where you can watch talks, lectures, movies and documentaries during the day. At night, enjoy world-class productions from musical theatre and cabaret to pop music, dance and fun interactive game shows.

At sea

Tag 4

Today you will enter Antarctic waters, an unpredictable but stunningly beautiful environment that always surprises. Put on your complimentary polar parka and head to the Observation Deck to spot icebergs for the first time – it's a feeling that will stay with you forever.

Watch out for whale blows in the distance and your expert polar Discovery team will be on hand to provide and answer any insightful information. Comprised of up to 20 members, this team of geologists, historians, ornithologists, marine biologists, and glaciologists is at the heart of your Antarctic Voyage.

Antarctica

Tag 5

Slide open the floor-to-ceiling doors of your verandah suite to see icebergs sculpted by nature and glacial mountains rising thousands of metres from the ocean. Antarctica is a birdwatcher's paradise, with more than 40 different species, so keep your eyes peeled for wandering albatrosses, which have the largest wingspan of any flying bird, as well as shearwaters, giant petrels and more.

Due to the extraordinary nature of the region, excursions throughout your Expedition Voyage are dependent on the ice and weather conditions. Your experienced Captain and specialist Discovery Team, who have made countless journeys to Antarctica, will use their expertise to design your voyage from day to day, making the most of 18–20 hours of daylight.

Scenic Discovery: Daily experiences may include cruising on Zodiacs, stepping ashore to view vast penguin rookeries or historic huts, and kayaking or paddle boarding around icebergs. Wherever your voyage takes you, you will have countless “pinch me” moments.

Antarctica

Tag 6

Portal Point^^ – a former British refuge hut – may be a potential landing site during your voyage.

Or you may visit Deception Island^^ as part of your itinerary. Nestled in the South Shetland Islands archipelago, it is one of the only places in the world that ships can sail directly into the centre of a submerged caldera of an active volcano. With her world-class design and state-of-the-art technology, Scenic Eclipse can sail through a rocky gap into the horseshoe-shaped harbour. The island is also home to a few small scientific outposts and hundreds of thousands of chinstrap penguins.

Tonight could be the night you enjoy Sushi^ @ Koko's with your new friends. Stay up late in the bar or retire to the library for a moment of blissful solitude before bed.

Antarctica

Various species of penguins can be found in Antarctic and the sub-Antarctic region, with around 12 million penguins living on the Peninsula, including Adélie, Chinstrap, Gentoo, and the very rare Emperor penguins. Guided by the expert Polar Discovery Team, you'll witness colonies up close; hear their mighty calls and watch as they clumsily waddle along and interact with each other.

Tag 7

Whales are another majestic creature you may encounter, whether a minke, a humpback or an Orca. Watch them from the comfort of your ultra-luxury Discovery Yacht, in a Zodiac with an experienced Polar Discovery Team member, or from their level in a kayak or stand-up paddleboard – a breathtaking experience.

Scenic Discovery: When enjoying daily Scenic Discovery excursions, ask for your expert Discovery Leader for photography tips and guidance on how to spot the wildlife around you. They will help you immortalise these incredible moments while cruising on the Zodiacs, kayaking and stand-up paddleboarding around impressive ice formations.

Antarctica

Tag 8

Lemaire Channel^{^^}, renowned for its picturesque views and often referred to as 'Kodak Alley', could be our next exciting destination. If during your voyage the Scenic Eclipse weaves through this channel, make sure you set your alarm and embrace the cool air from the Observation Terrace. Pass through the 11-kilometre-long channel, just 700 metres wide at its narrowest point, and be amazed at the dramatic rocky mountains and glowing blue icebergs so close to the ship.

In between Scenic Discovery experiences, enjoy a specialty tea or coffee in the Observation Lounge and watch the world float by through Swarovski telescopes.

Antarctica

Tag 9

In the distance on a clear day you can see Mount Francis^{^^} standing tall as Anvers Island's highest peak, showcasing the rugged beauty of Antarctica. Every day is unique, you might get the chance to hike or spend time on the pebbled beach, enjoying the view surrounded by curious penguins.

Back on board, explore some of Scenic Eclipse's indulgent spaces, from the welcoming Observation Lounge to the expansive Senses Spa#. Soothe your muscles in the sauna or heated therapy lounge, join a yoga or Pilates class. Choose one of up to 10 world-class dining experiences on board tonight.

Antarctica

Tag 10

Be sure to pack your swimming suit because you could be going for a swim today. For many, the polar plunge is a once-in-a-lifetime opportunity and a rite of passage on an expedition to Antarctica. Once throughout your voyage, Scenic Eclipse will stop, and the team will set up the marina ready for the brave people who want to jump into the freezing Antarctic waters.

Excitement will spread through the Discovery Yacht, and you will start hearing the contagious nervous laughter. As you stand on the edge, ready to jump, you will feel the adrenaline rush while you second-guess whether this is a good idea. When you jump, the moment before you hit the water will feel like it goes forever, but soon, an invigorating, exciting, and surprisingly refreshing sensation will take over.

If you choose to skip the polar plunge, make sure you find a good viewing location as you feel the chills of everyone coming out of the water. Join them for a cup of hot chocolate or toast with a glass of whiskey.

At sea

Cruising the Drake Passage back to the tip of South America, there is plenty of time to indulge in the ultra-luxury of your Discovery Yacht and reflect on the magic moments you've experienced in the Southern Ocean.

Tag 11

Freshly squeezed juice, steaming barista-made coffee or tea delivered to your door by the butler will help start your day. Head to the gym for an invigorating workout or the studio for a Pilates class, some guided stretching or aerial yoga.

In the evening, settle in at the spacious Scenic Lounge Bar to enjoy your beverage of choice, whether it be aged whiskey or a glass of wine. With Scenic's signature all-inclusive ultra-luxury philosophy, indulge in top shelf spirits, over 130 whiskeys, a premium wine list and French champagne.

At sea > Ushuaia

Tag 12

Have you visited the bridge yet? Thanks to the Captain's open bridge policy, guests are welcome any time to learn more about the technical abilities of The World's First Discovery Yacht and see it in full operation. The bridge is also one of the best viewing areas on the ship.

Make sure you book a treatment# at the tranquil Senses Spa before your Discovery expedition ends. Perhaps an ESPA facial or massage# or an alternative therapy including Ayurvedic massage or Japanese shiatsu. Afterwards, hold on to that feeling of calm for a while longer in the Zen-like space of the Vitality Lounge.

Ushuaia

Tag 13

Discover Ushuaia, the enchanting "end of the world" destination. The city is nestled along the picturesque Beagle Channel against a backdrop of snow-dusted peaks, with the towering Monte Olivia commanding attention. As your gateway to the spellbinding Antarctic Peninsula, Ushuaia promises unparalleled adventures and unrivalled beauty. Immerse yourself in a world of natural wonders, ancient cultures, and the intoxicating spirit of exploration that defines this region.

Cape Horn & Murray Channel

Tag 14

Sail through the iconic waters of Cape Horn, where the Atlantic and Pacific Oceans meet at the southernmost point of South America. It's a great place to spot sea lions, penguins and whales. You'll also cruise through the Murray Channel, named after British naval officer Captain John Murray. Be on the lookout for albatrosses and other seabirds that inhabit these remote waters.

Join an introductory presentation about your expedition by the Discovery Team in the state-of-the-art theatre. Feel the excitement building as they explain how your Zodiac and other Discovery Excursions will work in the coming days. The theatre is where you can watch talks, lectures, movies and documentaries during the day. At night, enjoy world-class productions from musical theatre and cabaret to pop music, dance and fun interactive game shows.

Chilean Fjords

Tag 15

Navigate the labyrinth of the Chilean Fjords – its long narrow inlets and steep cliffs, channels and islands all carved by glaciers. From the Observation Deck, with its commanding view of the bow, marvel at the towering peaks, cascading waterfalls, and dense forests of this pristine wilderness.

You will also witness Seno Garibaldi, one of a handful of advancing glaciers in the world, and cruise to Seno Pia Glacier where you'll explore its ice crevasses and rivers. This area is a World Heritage listed Biosphere Reserve, and its rich waters are home to seals, sea lions and seabirds, including the impressive Andean condor. Ask for some insights from the expert Discovery Team; comprised of up to 20 members, this team of geologists, historians, ornithologists, marine biologists, and glaciologists is at the heart of your Expedition Voyage.

Cruising Beagle Channel & Vockburn Channel

Tag 16

Cruise through the calm and scenic Beagle Channel, named so for the ship that carried Charles Darwin on his five-year discovery journey. Admire the dramatic views of the Andean mountains from the comfort of the ultra-luxury Scenic Eclipse. You will also cruise through the 64-kilometre Vockburn Channel, known for its stunning glacier views. Keep an eye out for seals, dolphins, and whales which frequent these waters.

Watch this spectacular scenery slip by as you relax in a cabana on Deck 10. Alternatively, ask your butler to bring afternoon tea to your suite and relax on your private verandah.

Aguila & Condor Glacier

Tag 17

Today, you will witness the awe-inspiring Aguila Glacier and Condor Glacier, which form part of the Darwin Mountain Range – named after Charles Darwin – in Alberto de Agostini National Park. This is the third largest park in Chile, comprising fjords, glaciers and ice fields among subpolar forests and snow-capped peaks. Marvel at the immense size of these ancient ice formations cascading down the mountainside into the sea. Aguila Glacier is particularly beautiful feeding into a mineral-rich lagoon that attracts wildlife.

Cruise Magdalena and Gabriel Channel (narrow) - Tucker Islets

Tag 18

Stand on the Observation Terrace as Scenic Eclipse cruises through the narrow passages of Magdalena Channel and Gabriel Canal, surrounded by towering cliffs and pristine wilderness. The Tucker Islets is a group of small islands and rocky outcrops in the Strait of Magellan, which is home to colonies of Magellanic penguins and other seabirds, such as skuas and petrels.

Tonight could be the night you meet your new friends at Sushi @ Koko's for dinner. Enjoy entertainment in the state-of-the-art theatre and unwind with a nightcap at the Scenic Lounge Bar.

Admiralty Sound and Ainsworth Bay

Tag 19

Cruise majestic Admiralty Sound, which is home to leopard and elephant seals and hugged by snow topped mountain ranges, wide bays and majestic fjords of Alberto de Agostini National Park. Go ashore to secluded Ainsworth Bay in a Zodiac, where you can get up close to towering glaciers and perhaps spot seals basking on the ice floes.

You may also wish to enjoy your time on board with a visit to the gym for an invigorating workout or the studio for a Pilates class, some guided stretching or aerial yoga.

Cruise Whiteside Canal and Strait of Magellan

Tag 20

Cruise through picturesque Whiteside Canal today and the historic Strait of Magellan, which links the Atlantic and Pacific Oceans. Named after Portuguese explorer Ferdinand Magellan in 1520, this was the primary passage for seafaring transport before the Panama Canal. You'll follow the journeys of early explorers such as Ferdinand Magellan and Sir Francis Drake. Learn about the rich maritime history of these legendary waterways from your expert Discovery Team.

You may wish to spend time in the theatre tonight, which has advanced cinemascope technology and multiple viewing screens that create an immersive 270-degree experience, complete with a sparkly night-sky ceiling.

Punta Arenas

Tag 21

Punta Arenas is located at the southern extreme of Chile and serves as the gateway into Antarctica as well as Torres del Paine National Park. Overlooking the Strait of Magellan, the city flourished during the California Gold Rush – its prime position served as a haven for ships. The city will captivate you with its clean air, sophisticated European architecture and is renowned for kayaking. Nearby Magdalena Island is the breeding ground of Magellanic penguin colonies.

When back on board, you may wish to book a treatment# at the tranquil Senses Spa. Perhaps indulge with an ESPA facial# or an alternative therapy including Ayurvedic massage#

Cruise Strait of Magellan and Atlantic Ocean

Tag 22

Sail through the legendary Strait of Magellan and enjoy panoramic views of the rugged coastline out the open sea. Enjoy a specialty tea or coffee in the Observation Lounge and watch the world float by through Swarovski telescopes.

Spend time with friends at one of 10 dining venues – enjoy a casual lunch at Azure Bar & Café or elegant affair at Elements. At night, enjoy a performance in the state-of-the-art theatre before you retreat to your ultra-luxury suite with a nightcap.

Isla Pingüino

Tag 23

Today you'll visit the remote and rugged Isla Pingüino, a windswept wildlife sanctuary just off the Patagonian coast. Named for its charismatic residents, the island is home to a thriving colony of Magellanic penguins and, unusually, a small group of rockhopper penguins, the only such colony found this far north on the Atlantic coast.

Step ashore with your expert Discovery Team for an up-close look at this vibrant ecosystem. As you walk the rocky terrain and seaweed-fringed coastline, keep your eyes open for lounging elephant seals and seabirds riding the thermals above the cliffs. The raw beauty of this windswept island offers a unique sense of seclusion and a deep connection to nature.

At Sea

Tag 24

After days of exploration, enjoy a sleep-in lulled by the rhythm of the ocean. A freshly squeezed juice, steaming barista-made coffee or tea delivered to your door by your butler will help start your leisurely day at sea.

Have you visited the bridge yet? Thanks to the Captain's open bridge policy, guests are welcome any time to learn more about the technical abilities of The World's First Discovery Yacht and see it in full operation. The bridge is also one of the best viewing areas on the ship.

Punta Piramides

Tag 25

Explore Punta Piramides, a World Heritage-listed nature reserve and an important breeding location for the endangered southern right whale, elephant seals and a large rookery of sea lions. Orcas also frequent the area and shorebirds also stop here on their annual migrations.

When enjoying daily Discovery excursions, ask for your expert Discovery Leader for photography tips and guidance on how to spot the wildlife around you. They will help you immortalise these incredible moments while cruising on the Zodiacs, kayaking and stand-up paddleboarding.

At Sea

Tag 26

Today is another leisurely day at sea. Head to the gym for an invigorating workout or the studio for a Pilates class, some guided stretching or aerial yoga. Perhaps book a treatment# at the tranquil Senses Spa, from an ESPA facial# to an alternative therapy including Ayurvedic massage# Spend the afternoon at leisure in your luxurious suite or head for the spacious and elegant Scenic Bar Lounge to enjoy your beverage of choice, whether it be aged whiskey—there are over 130 varieties—or a glass of wine. Then choose from up to 10 world-class dining experiences for dinner.

At Sea

Tag 27

Today is your final full day at sea, so make the most of the luxurious spaces on board Scenic Eclipse. Slide open the floor-to-ceiling doors of your suite to see the vast ocean vistas. You may request your butler to deliver breakfast to your suite or dine with fellow guests in the alfresco Yacht Club.

Enjoy a dip in the Vitality Pool, followed by some time in one of the shaded oceanfront cabanas. Play a board game in the Observation Lounge, or head to the Sky Deck to sip on some Champagne while enjoying the fresh ocean breeze. Return to your favourite restaurant with your new friends or indulge in a private dinner on your verandah.

Montevideo

Tag 28

Arrive in Montevideo, Uruguay's vibrant capital city that boasts a rich 300-year history and an eclectic melange of Art Deco and Neoclassical architecture. While its Rambla (beachside avenue) may not be as famous as Barcelona's, it's much longer at 22 kilometres and traces the seaside almost the entire way. Most of the city's streets connect to the Rambla, making Montevideo an easy place to navigate and explore. There's a collective love for meat, wine, football and celebrations, as well as an annual month-long carnival.

Buenos Aires

Your journey of wonder ends this morning in Buenos Aires. Farewell the crew and your new friends and disembark after breakfast, taking away memories of a truly unforgettable experience.

Tag 29

Please book your flight to depart out of Buenos Aires after 12:00 PM.

^Flights on board our two helicopters and submersible experiences are at additional cost, subject to regulatory approval, availability, weight restrictions, medical approval and weather, ice and tidal conditions. #Spa treatments at additional cost. +All drinks on board, including those stocked in your mini bar, are included, except for a very small number of rare, fine and vintage wines, Champagnes and spirits.

The itinerary is a guide only and may be amended for operational reasons. As such Scenic cannot guarantee the voyage will operate unaltered from the itinerary stated above. Please refer to our terms and conditions for further information.

Im Preis inbegriffen

- Services und Annehmlichkeiten an Bord
- Maximal 229 Gäste an Bord (200 in den Polarregionen)
- Großzügige Suiten mit privater Veranda 2:1-Verhältnis
- Gäste- und Butlerservice für jeden Gast
- Zehn kulinarische Erlebnisse in neun Gourmet-Menues – von gemütlicher Atmosphäre bis zum eleganten Fine Dining
- Auswahl an Premium-Markengetränken mit über 101 Whiskysorten
- Scenic Discovery Ausflüge mit dem Zodiac
- Komplettes Kajakprogramm und Stand-up-Paddle-Boarding
- Kostenloser Expeditionsparaka und Wasserflasche sowie die Nutzung von speziellen Polartiefeln
- Interessantes Vortrags- und Bildungsprogramm mit Experten an Bord
- Spezielle Observation Lounge und Terrasse für die beste Aussicht
- Swarovski-Teleskope an Deck sowie Ferngläser in der Suite, damit Sie keinen aufregenden Momente verpassen
- Senses Spa** auf 551 m² mit Fitnesscenter, Yoga- und Pilatesstudio
- Außen-Vitalpools nachskandinavischem Vorbild
- Modernes Theater mittäglichem Unterhaltungs- und Bildungsangebot
- WLAN inclusive
- Inlandsflüge inkl. Gebühren
- Flughafentransfers
- Trinkgelder an Bord und an Land

Nicht im Preis inbegriffen

- Internationale Flüge, sofern nicht angegeben
- Reiseversicherungen
- Visa- oder Passgebühren (falls erforderlich)
- persönliche Ausgaben (Einkäufe, optionale Ausflüge)
- sonstige im Programm nicht genannte Leistungen

Ihr Schiff

Ihr Schiff ist die "Scenic Eclipse". Ausführlich stellen wir Ihnen dieses Schiff auf unseren Schiffseiten vor. [Ausführliche Informationen zu diesem Schiff.](#)

Passagiere
199

Bordsprachen


Eisklasse
PC-6

Special
Helikopter

