

IHRE REISE

# Ultimative antike Schätze, Fjorde und Wunder Südamerikas

Reisetermin

31.10.2027 - 25.11.2027

Reisedauer

26 Tage

Reederei / Schiff

Scenic Eclipse / SCENIC Luxury Cruises & Tours



## Scenic Eclipse Veranda Suite C, Deck 6



Doppelbelegung



€21,525

pro Person

Einzelbelegung



€46,915

pro Person

## Scenic Eclipse Veranda Suite A, Deck 8



Doppelbelegung



€23,340

pro Person

Einzelbelegung



€50,545

pro Person

## Scenic Eclipse Deluxe Veranda Suite CA, Deck 6



Doppelbelegung



€24,255

pro Person

Einzelbelegung



€52,375

pro Person

Scenic Eclipse Deluxe Veranda Suite AA, Deck 7



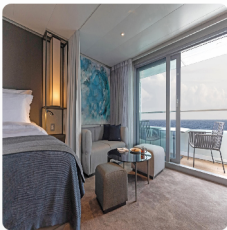
Doppelbelegung

  
**€25.580**  
 pro Person

Einzelbelegung

  
**€55.025**  
 pro Person

Scenic Eclipse Grand Deluxe Veranda Suite CD, Deck 6



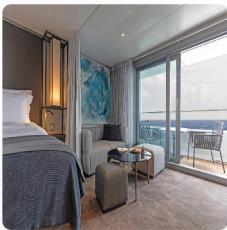
Doppelbelegung

  
**€26.945**  
 pro Person

Einzelbelegung

  
**€57.755**  
 pro Person

Scenic Eclipse Grand Deluxe Veranda Suite AD, Deck 8



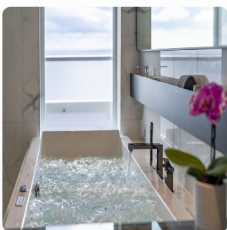
Doppelbelegung

  
**€27.810**  
 pro Person

Einzelbelegung

  
**€59.485**  
 pro Person

Scenic Eclipse Spa Suite S, Deck 8



Doppelbelegung

  
**€33.015**  
 pro Person

Einzelbelegung

  
**€69.895**  
 pro Person

Scenic Eclipse Spa Suite SA, Deck 9



*Doppelbelegung*

  
**€33.580**  
 pro Person

*Einzelbelegung*

  
**€71.025**  
 pro Person

Scenic Eclipse Panorama Suite P, Deck 8



*Doppelbelegung*

  
**€63.015**  
 pro Person

*Einzelbelegung*

  
**€129.895**  
 pro Person

Scenic Eclipse Grand Panorama Suite GP, Deck 6



*Doppelbelegung*

  
**€63.735**  
 pro Person

*Einzelbelegung*

  
**€131.335**  
 pro Person

Scenic Eclipse Owners Penthouse Suite OP, Deck 9



*Doppelbelegung*

  
**€79.775**  
 pro Person

*Einzelbelegung*

  
**€163.415**  
 pro Person

Scenic Eclipse Grand Deluxe Veranda Suite BD, Deck 7



*Doppelbelegung*



Nicht verfügbar

*Einzelbelegung*



Nicht verfügbar

Scenic Eclipse Veranda Suite B, Deck 7



*Doppelbelegung*



Nicht verfügbar

*Einzelbelegung*



Nicht verfügbar

Scenic Eclipse Veranda Suite D, Deck 5



*Doppelbelegung*



Nicht verfügbar

*Einzelbelegung*



Nicht verfügbar

Scenic Eclipse Deluxe Veranda Suite BA, Deck 7



*Doppelbelegung*



Nicht verfügbar

*Einzelbelegung*



Nicht verfügbar

Scenic Eclipse Deluxe Veranda Suite DB, Deck 5



*Doppelbelegung*



Nicht verfügbar

*Einzelbelegung*



Nicht verfügbar

Scenic Eclipse Two-Bedroom Penthouse Suite TP, Deck 9



*Doppelbelegung*



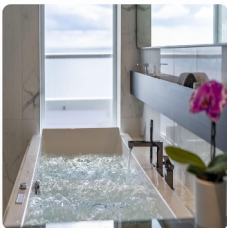
Nicht verfügbar

*Einzelbelegung*



Nicht verfügbar

Scenic Eclipse Spa Suite SB, Deck 9



*Doppelbelegung*



Nicht verfügbar

*Einzelbelegung*



Nicht verfügbar

Scenic Eclipse Deluxe Veranda Suite DA, Deck 5



*Doppelbelegung*



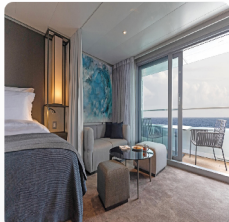
Nicht verfügbar

*Einzelbelegung*



Nicht verfügbar

Scenic Eclipse Grand Deluxe Veranda Suite DD, Deck 5



*Doppelbelegung*



Nicht verfügbar

*Einzelbelegung*



Nicht verfügbar



## Panama City, Panama

Tag 1

Welcome to Panama City. This cosmopolitan metropolis is a captivating blend of old and new, where gleaming skyscrapers stand alongside 17th-century churches and beautifully preserved colonial buildings in the historic Casco Viejo district, a World Heritage site.

Be warmly greeted by your crew as you arrive at your ultra-luxury Discovery Yacht, Scenic Eclipse. Enjoy a glass of Champagne, meet your butler and get familiar with your spacious suite, admiring the city from your private verandah.

Please book your flight to arrive into Panama City prior to 02:00 PM.

## Darién National Park - Playa del Muerto, Panama

Tag 2

Uncover World Heritage-listed Darién National Park one of the most important heritage sites in central America. A natural bridge spanning the two Americas, it houses a myriad of habitats, ranging from rocky coastlines to sandy beaches and mangroves. A plethora of wildlife awaits as even endangered species of Night Monkey, Spotted Paca and Guatemalan Black Howler call these tropical forests home. Darién National Park remains one of the few examples of protected areas co-inhabited by humans in the world.

### Discovery:

Explore Darién National Park today through the exciting activities organised by the Discovery Team. In the evening recap, the Discovery Leader will go over the planned activities.

## Utria National Park - Ensenada de Utria, Colombia

Tag 3

Utria National Natural Park, nestled along Colombia's Pacific coast, is a true hidden gem. This lush, mountainous rainforest, one of the wettest places on Earth, boasts an incredible four distinct ecosystems. Dominated by dense rainforest, the park also features expansive mangroves lining its coastline. It teems with biodiversity, sheltering a vast array of flora and fauna, including more than 500 bird species.

### Discovery:

Join the Discovery Team in exploring Utria National Park. In the evening recap, the Discovery Leader will go over the planned activities.

## At Sea

Tag 4

After a restorative night of rest on your Scenic Slumber Bed, the day is yours to spend as you wish. Perhaps ask the butler for breakfast in bed, or enjoy a quiet morning on your sumptuous verandah.

Begin your discovery of the exclusive spaces on board your ultra-luxury Discovery Yacht or indulge in the 550m2 Senses Spa#, reinvigorating your mind body and soul.

During the day, the theatre comes alive with captivating lectures from our Discovery Team.

Later, choose one of up to 10 dining experiences; enjoy lunch at Azure Bar & Café and indulge in Asian cuisine at Koko's Asian Fusion.

## Manta, Ecuador

Tag 5

The dynamic coastal city of Manta greets you with its iconic tuna statue, a nod to its status as the tuna capital of the world and one of Ecuador's most important fishing hubs. Ju Manta has a rich history dating back to pre-Columbian times, once home to the indigenous Manteño civilization, known for their advanced seafaring skills. Just a short stroll from the port, the lively town centre buzzes with energy, where you can explore vibrant markets brimming with Panama hats—traditionally handwoven in Ecuador—along with exquisite silver jewellery and stylish apparel.

## At Sea

Tag 6

Wake up after a good night's sleep on your signature Scenic Slumber Bed. Begin your day with a barista coffee brought by your butler, or perhaps your choice of a buffet or à la carte breakfast in the Yacht Club.

Throughout the day, the theatre hosts engaging lectures by our Discovery Team. Check the Daily Program on your TV for schedules.

In the evening, settle in at the spacious Scenic Lounge Bar to enjoy your beverage of choice. With Scenic's signature all-inclusive ultra-luxury philosophy, indulge in top shelf spirits, over 130 whiskeys, a premium wine list and French champagne.

## Salaverry, Peru

Tag 7

Salaverry is a cultural treasure of Peru, home to the ancient wonders of the Chimú and Mochica civilizations. Step back in time at Chan Chan, the largest adobe citadel in pre-Columbian America and a UNESCO World Heritage Site.

The impressive Moche pyramids are adorned with vibrant mythological frescoes that bring the ancient history to life. An unforgettable journey into Peru's rich cultural heritage awaits.

### At Sea

Tag 8

After a day of exploration spend some time with your fellow guests you have met on your journey. Ask the butler to bring your morning coffee, then gather your new friends for a gym session in the state-of-the art POWER: Gym.

Take advantage of the Captain's open bridge policy and visit the operational crew. Guests are welcome any time to learn more about the technical abilities of The World's First Discovery Yachts™ and see it in full operation. The bridge is also one of the best viewing areas on the ship.

## Paracas, Peru

Tag 9

Welcome to Paracas, a delightful coastal town featuring a beautiful bay, fascinating pre-Inca heritage, and a National Reserve—an exceptional spot for birdwatching.

Paracas is a town on Peru's west coast. It's known for its idyllic beaches, rich heritage, and an abundance of wildlife, so much so that Paracas Peninsula has been declared a national reserve spanning desert, ocean, and islands. This town is a launch point for the uninhabited Ballestas Islands, home to sea lions, pelicans and Humboldt penguins.

### At Sea

Tag 10

After visiting Paracas, enjoy a relaxing day by curling up with a good book in the Observation Lounge library or take a visit to the Sky Bar and the outdoor Vitality pool on Deck 10.

For relaxation and wellbeing at sea, the indulgent Senses Spa# awaits on Deck 6. Inside this luxurious retreat you can be pampered with a range of holistic ESPA treatments#, including massages, facials, manicures and pedicures.

### At Sea

Tag 11

This might be the day you sleep in and relax in your suite, which surrounds you with the comforts of a 6-star hotel.

Perhaps begin the day with a fitness class, followed by a soak in the heated Vitality pool. Reward your active start by calling your butler to bring breakfast to your room. Then make a date with new friends over a relaxed lunch at the Yacht Club.

Alternatively, enjoy lectures from the expert Discovery Team in the state-of-the-art theatre or look for the region's unique wildlife using your suite's binoculars or Swarovski telescopes in the Observation Lounge.

### At Sea

Tag 12

Today is your final full day at sea, so perhaps take some time to soak up the final indulgences of Scenic Eclipse. Enjoy a dip in the Vitality pool and relax in one of the shaded oceanfront cabanas. Perhaps have dinner delivered by your butler to your ultra-luxury suite, return to your favourite restaurant with new friends or partake in an exquisite French meal at Lumière, a masterclass in fine dining.

Enjoy a nightcap in one of the nine bars and lounges and arrange for your butler to bring you coffee in your suite the next morning.

## Pingüino de Humboldt National Reserve

Freshly squeezed juice, steaming barista-made coffee or tea delivered to your door by your butler will help you start your day just the way you like it. As your Discovery Yacht sails toward the Pingüino de Humboldt National Reserve, be sure to attend the Discovery Team's Zodiac briefing.

Tag 13

Covering 859.3 hectares (1,890 acres), this stunning natural heritage site boasts a rich and diverse ecosystem with unique features. It is home to an impressive variety of bird species. Wildlife enthusiasts might have the chance to spot remarkable creatures like the Humboldt Penguin and the Common Bottlenose Dolphin in their natural environment.

### Discovery:

Explore this exceptional reserve today through the exciting activities organised by the Discovery Team. In the previous evening's recap, the Discovery Leader will go over the planned activities.

## Valparaíso

Tag 14

A city of colour, culture, and history, Valparaíso is a vibrant coastal gem perched along Chile's Pacific shores. Its steep hills are adorned with a maze of winding streets, brightly painted houses and striking street art, creating a bohemian charm that has inspired poets and artists for centuries. As a World Heritage-listed city, Valparaíso blends a rich maritime heritage with a dynamic contemporary energy.

## At Sea

Tag 15

Enjoy a sleep-in lulled by the rhythm of the ocean. Perhaps ask your butler to deliver breakfast to your spacious suite or meet fellow guests in the alfresco Yacht Club.

Today, join an introductory presentation about your expedition voyage by the Discovery Team in the state-of-the-art theatre. Feel the excitement as they explain how your Zodiac and other Discovery Excursions will work in the coming days. The theatre is where you can watch talks, lectures, movies and documentaries during the day. At night, enjoy world-class productions from musical theatre and cabaret to pop music, dance and fun interactive game shows.

## Niebla, Chile

Tag 16

Arrive in Niebla, home to the 17th century Niebla Fortress. Nearby Valdivia is a vibrant and tenacious university town that has endured various challenges such as attacks, floods, fires, and the catastrophic earthquake of 1960—the strongest ever recorded—which nearly submerged the city.

Spend the afternoon at leisure in your luxurious suite or head for the spacious and elegant Scenic Bar Lounge to enjoy your beverage of choice, whether it be aged whiskey—there are over 130 varieties—or a glass of wine. Then choose from up to 10 world-class dining experiences for dinner.

## Puerto Montt, Chile

Tag 17

This morning enjoy cruising through Relocavi Sound before arriving in the Chilean Lake District, Puerto Montt. It sits near the end of the Pan-American Highway – this epic stretch of road begins in Alaska and continues to Ushuaia in Argentina. Puerto Montt is the gateway to the Andean Alps and Patagonian fjords; around the corner lie gorges, far-flung islands, snow-capped volcanoes, and windswept shores.

During downtime on the ship, you may wish to visit the gym for an invigorating workout or the studio for a Pilates class, some guided stretching or aerial yoga.

## Castro, Isla Chiloé

Tag 18

Visit Castro, located on the island of Chiloé. This is a place of exquisite natural beauty, flanked by a fjord and home to Chiloé National Park, where an abundance of wildlife species thrives on the west coast. Catch a glimpse of the local penguin colony, comprising Magellanic and Humboldt penguins which migrate to the region. Stroll through the city streets and sample local delicacies, such as the Chiloé potato, and view the city's many World Heritage-listed churches, known for their ecclesiastical wooden architecture. After a day well spend exploring Castro enjoy the beautiful scenery while cruising the Gulf of Corcovado.

## At Sea

Tag 19

After days of exploration, spend time relaxing in your spacious suite. Delve into an insightful conversation with one of the Discovery Team members after an educational lecture in the state-of-the-art theatre – comprised of up to 20 members, this team of geologists, historians, ornithologists, marine biologists, and glaciologists is at the heart of your Expedition Voyage. Alternatively, simply watch as your Discovery-Yacht sails through extraordinary scenery like the Messier Channel and relax in a cabana on Deck 10 or in the privacy of your suite's verandah.

Join your new friends over a relaxed meal at the Azure Bar & Café. Graze the day away with included beverages as Scenic's culinary team goes to the Nth Degree to ensure every dining experience is personalised.

## Puerto Eden > Pio XI Glacier (Inner Fjords)

Tag 20

Cruise through the Inner Fjords and the English Narrows, which is home to remote Puerto Eden. This is the only settlement inside the Chilean Inside Passage, a region with a mountainous terrain and a thriving Magellanic sub-polar forest. You will be able to learn about the ancient Mapuche culture, navigate the town's intricate wooden boardwalks and see its native wildlife.

You will also see Pio XI Glacier, which is nestled within the Bernardo O'Higgins National Park and spans the size of Santiago. Also known as Brüggen Glacier, this exceptional wonder is the sole glacier on Earth that is expanding daily.

## Cruising Strait of Magellan

Tag 21

Cruise the historic Strait of Magellan, which links the Atlantic and Pacific Oceans. The primary passage for seafaring transport before the Panama Canal, you'll follow the journeys of early explorers such as Ferdinand Magellan and Sir Francis Drake.

Learn about the rich maritime history of these legendary waterways from your expert Discovery Team. Perhaps later head to the bridge for one of the best viewing areas of the ship. Thanks to the Captain's open bridge policy, guests are welcome any time to learn more about the technical abilities of The World's First Discovery Yacht and see it in full operation.

During the day, the theatre comes alive with captivating lectures from Discovery Team. Don't forget to check the Daily Program on your TV for timing—you won't want to miss these inspiring sessions!

## Punta Arenas, Chile

Tag 22

Punta Arenas is located at the southernmost point of Chile and serves as the gateway into Antarctica as well as Torres del Paine National Park. Overlooking the Strait of Magellan, its prime position served as a haven for ships during the California Gold Rush. The city will captivate you with its clean air, sophisticated European architecture and is renowned for kayaking. Nearby Magdalena Island is the breeding ground of the Magellanic penguin.

Back on board, you may wish to book a treatment# at the tranquil Senses Spa. Perhaps indulge with an ESPA facial# or an alternative therapy including Ayurvedic massages#.

## Chilean Fjords

Tag 23 Venture deep into the heart of Chilean Fjords as your Discovery Yacht navigates the untouched Agostini Fjord, a sanctuary of raw, natural beauty. Towering peaks rise dramatically above glacial-blue waters, leading to the awe-inspiring Agostini Glacier — a shimmering cascade of ice spilling from the rugged Darwin Mountain Range. As you glide through this remote wonderland, keep your eyes peeled for playful seals, soaring seabirds, and majestic humpback whales in their pristine habitat.

### Discovery:

Join your Discovery Team to get close to southern Chile's coastline in a zodiac. This is the ultimate way to spot wildlife – on land and in the water – while gaining in-depth knowledge of the landscape thanks to your talented, eagle-eyed guide.

## Chilean Fjords

Tag 24 Today you'll cruise to Seno Garibaldi and Seno Pia, home to active glaciers in glassy rivers framed by spectacular mountain views. This area is a World Heritage-listed Biosphere Reserve, and its rich waters are home to seals, sea lions and seabirds, including the impressive Andean condor.

Watch the spectacular scenery slip by as you relax in a cabana on Deck 10 this afternoon. Alternatively, ask your butler to bring afternoon tea to your suite and relax on your private verandah.

### Discovery:

Take the opportunity to explore your destination through a variety of exciting activities organised by the Discovery Team. During the evening recap, the Discovery Leader will share insights from the day's excursions and provide a preview of what's to come.

## Cape Horn

Tag 25 Cruise through the iconic waters of Cape Horn, where the Atlantic and Pacific Oceans meet at the southernmost point of South America. The collision of these two oceans is a spectacular display of nature's force and a great place to spot sea lions, penguins and whales.

You will also cruise through the scenic Beagle Channel, named after the ship that carried Charles Darwin on his five-year discovery journey. Admire the dramatic views of the Andean mountains from the comfort of your ultra-luxury Discovery Yacht.

## Ushuaia > Buenos Aires, Argentina

Your voyage ends today in Ushuaia, the main island of Tierra del Fuego and the southernmost city in the world. Disembark after breakfast to fly to Buenos Aires, taking away memories of a truly unforgettable experience.

Please book your flight to depart out of Buenos Aires after 09:30 PM.

Tag 26 #Spa treatments at additional cost. +All drinks on board, including those stocked in your mini bar, are included, except for a very small number of rare, fine and vintage wines, Champagnes and spirits. Specialty restaurants require a reservation, enquire on board. ^Flights on board our two helicopters and submersible experiences are at additional cost, subject to regulatory approval, availability, weight restrictions, medical approval and weather conditions. ~Kayak and stand-up paddleboard not available in all locations.

### Helicopter not operational in Argentina and Panama. Submersible not operational in Argentina.

The itinerary is a guide only and may be amended for operational reasons. As such Scenic cannot guarantee the voyage will operate unaltered from the itinerary stated above. Please refer to our terms and conditions for further information.

#### **Im Preis inbegriffen**

- Services und Annehmlichkeiten an Bord
- Maximal 229 Gäste an Bord (200 in den Polarregionen)
- Großzügige Suiten mit privater Veranda 2:1-Verhältnis
- Gäste- und Butlerservice für jeden Gast
- Zehn kulinarische Erlebnisse in neun Gourmet-Menues – von gemütlicher Atmosphäre bis zum eleganten Fine Dining
- Auswahl an Premium-Markengetränken mit über 101 Whiskysorten
- Scenic Discovery Ausflüge mit dem Zodiac
- Komplettes Kajakprogramm und Stand-up-Paddle-Boarding
- Kostenloser Expeditionsarka und Wasserflasche sowie die Nutzung von speziellen Polartiefeln
- Interessantes Vortrags- und Bildungsprogramm mit Experten an Bord
- Spezielle Observation Lounge und Terrasse für die beste Aussicht
- Swarovski-Teleskope an Deck sowie Ferngläser in der Suite, damit Sie keinen aufregenden Momente verpassen
- Senses Spa\*\* auf 551 m<sup>2</sup> mit Fitnesscenter, Yoga- und Pilatesstudio
- Außen-Vitalpools nachskandinavischem Vorbild
- Modernes Theater mittäglichem Unterhaltungs- und Bildungsangebot
- WLAN inclusive
- Inlandsflüge inkl. Gebühren
- Flughafentransfers
- Trinkgelder an Bord und an Land

---

#### **Nicht im Preis inbegriffen**

- Internationale Flüge, sofern nicht angegeben
- Reiseversicherungen
- Visa- oder Passgebühren (falls erforderlich)
- persönliche Ausgaben (Einkäufe, optionale Ausflüge)
- sonstige im Programm nicht genannte Leistungen

## *Ihr Schiff*

Ihr Schiff ist die "Scenic Eclipse". Ausführlich stellen wir Ihnen dieses Schiff auf unseren Schiffseiten vor. [Ausführliche Informationen](#) zu diesem Schiff.

Passagiere

199

Bordsprachen



Eisklasse

PC-6

Special

Helikopter

