

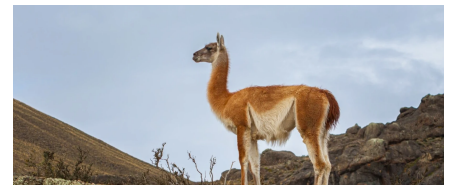
IHRE REISE

Die Chilenischen Fjorde und die
 Gletscher des Beagle-Kanals

Reisetermin
 13.11.2027 - 25.11.2027

Reisedauer
 13 Tage

Reederei / Schiff
 Scenic Eclipse / SCENIC Luxury Cruises & Tours



Scenic Eclipse Veranda Suite A, Deck 8



Doppelbelegung


€ 17.560
 pro Person

Einzelbelegung


€ 36.485
 pro Person

Scenic Eclipse Deluxe Veranda Suite CA, Deck 6



Doppelbelegung


€ 17.860
 pro Person

Einzelbelegung


€ 37.085
 pro Person

Scenic Eclipse Deluxe Veranda Suite AA, Deck 7



Doppelbelegung


€ 18.400
 pro Person

Einzelbelegung


€ 38.165
 pro Person

Scenic Eclipse Grand Deluxe Veranda Suite CD, Deck 6



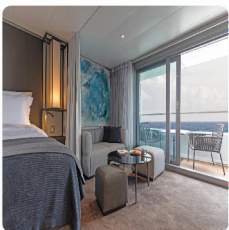
Doppelbelegung


€ 19.180
 pro Person

Einzelbelegung


€ 39.725
 pro Person

Scenic Eclipse Grand Deluxe Veranda Suite AD, Deck 8



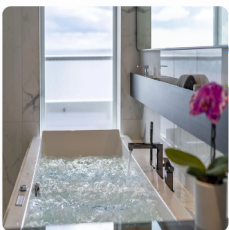
Doppelbelegung


€ 19.720
 pro Person

Einzelbelegung


€ 40.809
 pro Person

Scenic Eclipse Spa Suite S, Deck 8



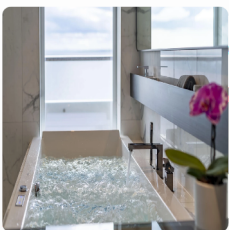
Doppelbelegung


€ 23.320
 pro Person

Einzelbelegung


€ 48.005
 pro Person

Scenic Eclipse Spa Suite SA, Deck 9



Doppelbelegung


€ 23.560
 pro Person

Einzelbelegung


€ 48.485
 pro Person

Scenic Eclipse Panorama Suite P, Deck 8



Doppelbelegung


€37.960
 pro Person

Einzelbelegung


€77.285
 pro Person

Scenic Eclipse Grand Panorama Suite GP, Deck 6



Doppelbelegung


€38.680
 pro Person

Einzelbelegung


€78.725
 pro Person

Scenic Eclipse Owners Penthouse Suite OP, Deck 9



Doppelbelegung


€45.880
 pro Person

Einzelbelegung


€93.125
 pro Person

Scenic Eclipse Veranda Suite C, Deck 6



Doppelbelegung


 Nicht verfügbar

Einzelbelegung


 Nicht verfügbar

Scenic Eclipse Deluxe Veranda Suite DA, Deck 5



Doppelbelegung



Nicht verfügbar

Einzelbelegung



Nicht verfügbar

Scenic Eclipse Deluxe Veranda Suite DB, Deck 5



Doppelbelegung



Nicht verfügbar

Einzelbelegung



Nicht verfügbar

Scenic Eclipse Two-Bedroom Penthouse Suite TP, Deck 9



Doppelbelegung



Nicht verfügbar

Einzelbelegung



Nicht verfügbar

Scenic Eclipse Veranda Suite B, Deck 7



Doppelbelegung



Nicht verfügbar

Einzelbelegung



Nicht verfügbar

Scenic Eclipse Grand Deluxe Veranda Suite DD, Deck 5



Doppelbelegung



Nicht verfügbar

Einzelbelegung



Nicht verfügbar

Scenic Eclipse Veranda Suite D, Deck 5



Doppelbelegung



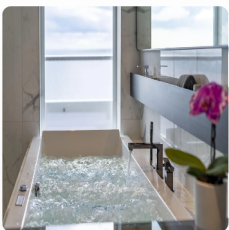
Nicht verfügbar

Einzelbelegung



Nicht verfügbar

Scenic Eclipse Spa Suite SB, Deck 9



Doppelbelegung



Nicht verfügbar

Einzelbelegung



Nicht verfügbar

Scenic Eclipse Deluxe Veranda Suite BA, Deck 7



Doppelbelegung




Nicht verfügbar

Einzelbelegung



Nicht verfügbar

Scenic Eclipse Grand Deluxe Veranda Suite BD, Deck 7



Doppelbelegung



Nicht verfügbar

Einzelbelegung



Nicht verfügbar



Valparaíso, Chile

The World Heritage-listed city of Valparaíso has a long and colourful history dating to the 16th century conquistadors. It is a vibrant city, both for its cultural scene – rich in theatre, music, performance, and street art – and for its brightly painted buildings that occupy its steep hillsides, which are accessed by funiculars. The vibe in this maze-like city is bohemian, its cobble stone streets bustling with casual eateries and bars to enjoy a craft beer or pisco (pisco and coke).

Tag 1

Your journey into wonder begins with a warm greeting from the Captain and crew as you step on board Scenic Eclipse. Sip on a glass of Champagne and explore your luxurious suite, then join your fellow guests at the Sky Bar and toast to the start of an unforgettable voyage.

Please book your flight to arrive into Santiago prior to 12:00 PM.

At Sea

Enjoy a sleep-in lulled by the rhythm of the ocean. Perhaps ask your butler to deliver breakfast to your spacious suite or meet fellow guests in the alfresco Yacht Club.

Tag 2

Today, join an introductory presentation by the Discovery Team in the state-of-the-art theatre. Learn about the journey ahead through Chilean Patagonia and towards the polar frontier and feel the excitement building as they explain how the Discovery Excursions will work in the coming days.

The theatre is where you can listen to lectures, enjoy movies and documentaries during the day. As night falls, experience unforgettable performances—from dazzling musical theatre and cabaret to electrifying pop, dance, and interactive game shows.

Niebla, Chile

Arrive in Niebla, home to the 17th century Niebla Fortress. Nearby Valdivia is a vibrant and tenacious university town that has endured various challenges such as attacks, floods, fires, and the catastrophic earthquake of 1960—the strongest ever recorded—which nearly submerged the city.

Tag 3

Spend the afternoon at leisure in your ultra-luxury suite or head for the spacious and elegant Scenic Lounge Bar to enjoy your beverage of choice, whether it be aged whiskey—there are over 130 varieties—or a glass of wine. Then choose from up to 10 world-class culinary experiences. Perhaps try Koko's Asian Fusion tonight for a vibrant experience inspired by the diverse flavours of Asia. From sushi to stir-fries, every dish is crafted with authentic ingredients and served in a stylish, modern setting.

Puerto Montt, Chile

A busy town in the Chilean Lake District, Puerto Montt sits near the end of the Pan-American Highway – a legendary stretch of road beginning in Alaska and continuing to Ushuaia in Argentina. Framed by snow-capped volcanoes and lush green landscapes, Puerto Montt serves as a gateway to the stunning Andean Alps. Stroll along its bustling waterfront, explore colourful markets brimming with artisan crafts and fresh seafood.

Tag 4

As you enjoy your time on board your Scenic Discovery Yacht, you may wish to visit the state-of-the-art gym for an invigorating workout or the studio for a Pilates class, some guided stretching or aerial yoga.

Castro, Isla Chiloé

Discover Castro, set on the enchanting island of Chiloé, where exquisite natural beauty meets rich cultural heritage. Nestled beside a scenic fjord and home to Chiloé National Park, this region is a haven for diverse wildlife on the island's wild west coast. Spot a glimpse of the local penguin colony, comprising Magellanic and Humboldt penguins, which migrate to the region. Stroll through the city streets and sample local delicacies, such as the Chiloé potato, and marvel at the many World Heritage-listed churches, known for their ecclesiastical wooden architecture.

Tag 5

After a day of exploration, choose from up to 10 world-class culinary options for dinner. Perhaps try Koko's Asian Fusion for a vibrant experience inspired by the diverse flavours of Asia. From expertly rolled sushi to sizzling stir-fries, every dish is crafted with authentic ingredients and served in a stylish, modern setting.

At Sea

After days of exploration, spend time relaxing on board your ultra-luxury Scenic Discovery Yacht. Delve into an insightful conversation with one of your Discovery Team members after an educational lecture in the state-of-the-art theatre. Comprised of up to 20 members, this team of geologists, historians, ornithologists, marine biologists, and glaciologists is at the heart of your Expedition Voyage.

Tag 6

On Scenic Eclipse, your days at sea are filled with enriching experiences and moments of connection. Activities are thoughtfully designed to inspire, entertain and elevate your journey.

Puerto Eden > Pio XI Glacier (Inner Fjords)

Cruise deep into Patagonia's Inner Fjords and the English Narrows, which is home to remote Puerto Eden. This is the only settlement inside the Chilean Inside Passage, a region with a mountainous terrain and a thriving Magellanic sub-polar forest. You will be able to learn about the ancient Mapuche culture, navigate the town's intricate wooden boardwalks and see its native wildlife.

Tag 7

You will also witness the stunning Pio XI Glacier, which is nestled within the Bernardo O'Higgins National Park, in the heart of Chilean Patagonia, and spans the size of Santiago. Also known as Bruggen Glacier, this exceptional wonder is the sole glacier on Earth that is expanding daily.

Scenic Discovery:

Take the opportunity to explore your destination through a variety of exciting experiences organised by the Discovery Team. During the evening recap, the Discovery Leader will share insights and provide a preview of what's to come.

Cruising Strait of Magellan

Tag 8

Today you will cruise the historic Strait of Magellan, which links the Atlantic and Pacific Oceans. Named after Portuguese explorer Ferdinand Magellan in 1520, this was the primary passage for seafaring transport before the Panama Canal. You will follow the journeys of early explorers such as Ferdinand Magellan and Sir Francis Drake.

Learn about the rich maritime history of these legendary waterways from your expert Discovery Team. Perhaps later head to the bridge for one of the best viewing areas of the ship. Thanks to the Captain's open bridge policy, guests are welcome any time to learn more about the technical abilities of Scenic Eclipse and see it in full operation.

Punta Arenas, Chile

Tag 9

Punta Arenas is located at the southern extreme of Chile, in the heart of Patagonia, and serves as the gateway into Antarctica as well as Torres del Paine National Park. Overlooking the Strait of Magellan, this historic port flourished during the California Gold Rush – its prime position served as a haven for ships. The city will delight with its fresh air, sophisticated European architecture and passion for kayaking.

When back on board, you may wish to book a treatment# at the tranquil Senses Spa. Perhaps indulge in an ESPA facial# or an alternative therapy including Ayurvedic massages#.

This evening, experience fine French dining at Lumière (available by reservation), where elegant surroundings and impeccable service set the tone. Enjoy beautifully prepared dishes paired with expertly-curated wines – the best way to end your day in refined style.

Chilean Fjords

Tag 10

Navigate the labyrinth of the Patagonian fjords of southern Chile – their long narrow inlets and steep cliffs, channels and islands all carved by glaciers. From the Observation Deck with its commanding view of the bow, marvel at the towering peaks, cascading waterfalls, and dense forests of this pristine wilderness. When not covered in ice, the shore is a unique mix of temperate and Sub-Antarctic flora, from deciduous beech trees to edible Calafate berries.

Stay alert for delightful sightings of elephant seals, dolphins, and majestic whales gracefully accompanying your voyage – use your complimentary in-suite binoculars to find these as they blend into the landscape.

If you prefer a quiet night in, let your butler take care of everything with 24-hour in-suite dining. Whether it's breakfast in bed, a private lunch on your balcony, or a midnight snack, you'll enjoy exceptional service without leaving your suite.

Scenic Discovery:

Join your Discovery Team to get close to southern Chile's coastline in a Zodiac. This is the ultimate way to spot wildlife – while gaining in-depth knowledge of the landscape thanks to your talented, eagle-eyed guide.

Chilean Fjords

As you cruise through this remarkable region, witness Seno Garibaldi, one of a handful of advancing glaciers in the world. Continue to Seno Pia Glacier, where you'll have the chance to explore its striking ice crevasses and meandering rivers. This spectacular area, recognised as a World Heritage-listed Biosphere Reserve, teems with marine life—including seals, sea lions, and a variety of seabirds—while the majestic Andean condor soars overhead.

Tag 11

Watch the breathtaking scenery slip by as you relax in a cabana on Deck 10. Alternatively, ask your butler to bring afternoon tea to your suite and relax on your private verandah.

Scenic Discovery:

Get ready in your Discovery attire and join your Discovery Team for Zodiac cruising near the Seno Garibaldi and Seno Pia glaciers. Sit in silence and listen for the crack or thunder of a calving. If you're wanting a more active adventure, enjoy kayaking around the bergy bits.

Cape Horn

Cruise through the legendary waters of Cape Horn, where the Atlantic and Pacific Oceans meet at the southernmost point of South America. The collision of these two oceans can sometimes cause rocky waves but it's also a great place to spot sea lions, penguins and whales.

Tag 12

Continue through the Beagle Channel, tracing the southern edge of Patagonia, and named so for the ship that carried Charles Darwin on his five-year discovery journey. Admire the dramatic views of the Andean mountains from the comfort of your ultra-luxury Discovery Yacht.

Tonight could be the night you enjoy Sushi @ Koko's (available by reservation) with your new friends. Stay up late in the bar or retire to the library for a moment of blissful solitude before bed.

Scenic Discovery:

Weather and sea conditions permitting, take the opportunity to explore this remote archipelago, celebrated for its breathtaking beauty and dramatic landscapes. Join activities organized by the Discovery Team, such as a hike to the lighthouse and a visit to the Cape Horn Monument.

Ushuaia > Buenos Aires, Argentina

Your voyage ends today in Ushuaia, the main island of Tierra del Fuego and the southernmost city in the world. Farewell the crew and your fellow guests and disembark after breakfast for your flight to Buenos Aires. Take with you memories of a truly unforgettable journey through the wild beauty of Patagonia.

Please book your flight to depart out of Buenos Aires after 09:30 PM.

Tag 13

#Spa treatments are at additional cost. +All drinks on board, including those stocked in your mini bar, are included, except for a select number of rare, fine and vintage wines, Champagnes and spirits. Specialty restaurants require a reservation, enquire on board. Daily activities may be subject to change; please consult your Daily Wonder for updates.

^Experiences on board our helicopters and submersible are at additional cost, subject to regulatory approval, availability, weight restrictions, medical approval and weather conditions. . The itinerary is a guide only and may be amended for operational reasons. As such we cannot guarantee the voyage will operate unaltered from the itinerary stated above. Please refer to our full terms and conditions for further information.

~Kayak and stand-up paddleboard may not be possible in all destinations.

The itinerary is a guide only and may be amended for operational reasons. As such Scenic cannot guarantee the voyage will operate unaltered from the itinerary stated above. Please refer to our terms and conditions for further information.

Im Preis inbegriffen

- Services und Annehmlichkeiten an Bord
- Maximal 229 Gäste an Bord (200 in den Polarregionen)
- Großzügige Suiten mit privater Veranda 2:1-Verhältnis
- Gäste- und Butlerservice für jeden Gast
- Zehn kulinarische Erlebnisse in neun Gourmet-Menues – von gemütlicher Atmosphäre bis zum eleganten Fine Dining
- Auswahl an Premium-Markengetränken mit über 101 Whiskysorten
- Scenic Discovery Ausflüge mit dem Zodiac
- Komplettes Kajakprogramm und Stand-up-Paddle-Boarding
- Kostenloser Expeditionsparaka und Wasserflasche sowie die Nutzung von speziellen Polartiefeln
- Interessantes Vortrags- und Bildungsprogramm mit Experten an Bord
- Spezielle Observation Lounge und Terrasse für die beste Aussicht
- Swarovski-Teleskope an Deck sowie Ferngläser in der Suite, damit Sie keinen aufregenden Momente verpassen
- Senses Spa** auf 551 m² mit Fitnesscenter, Yoga- und Pilatesstudio
- Außen-Vitalpools nachskandinavischem Vorbild
- Modernes Theater mittäglichem Unterhaltungs- und Bildungsangebot
- WLAN inclusive
- Inlandsflüge inkl. Gebühren
- Flughafentransfers
- Trinkgelder an Bord und an Land

Nicht im Preis inbegriffen

- Internationale Flüge, sofern nicht angegeben
- Reiseversicherungen
- Visa- oder Passgebühren (falls erforderlich)
- persönliche Ausgaben (Einkäufe, optionale Ausflüge)
- sonstige im Programm nicht genannte Leistungen

Ihr Schiff

Ihr Schiff ist die "Scenic Eclipse". Ausführlich stellen wir Ihnen dieses Schiff auf unseren Schiffseiten vor. [Ausführliche Informationen zu diesem Schiff.](#)

Passagiere

199

Bordsprachen



Eisklasse

PC-6

Special

Helikopter

