

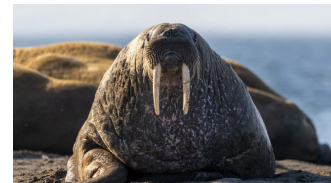
IHRE REISE

Spitzbergen – Reich der Eisbären

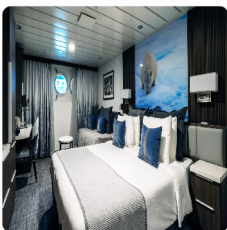
Reisetermin
 12.07.2027 - 20.07.2027

Reisedauer
 9 Tage

Reederei / Schiff
 Sylvia Earle / Aurora Expeditions



Aurora Stateroom Triple Share



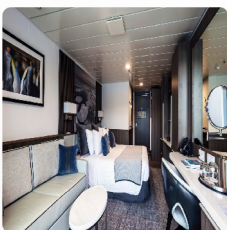
Dreibettbelegung


€10.556
 pro Person

Gemeinschaftsbelegung


€10.556
 pro Person

Aurora Stateroom Superior



Doppelbelegung


€11.516
 pro Person

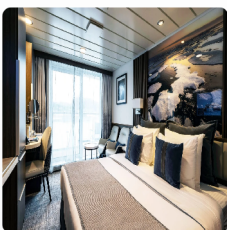
Einzelbelegung


€17.274
 pro Person

Gemeinschaftsbelegung


€11.516
 pro Person

Balcony Stateroom Category C - Solo



Doppelbelegung


€11.756
 pro Person

Einzelbelegung


€17.634
 pro Person

Gemeinschaftsbelegung


€11.756
 pro Person

Balcony Stateroom Category B - Solo



Doppelbelegung


€ 12.396
 pro Person

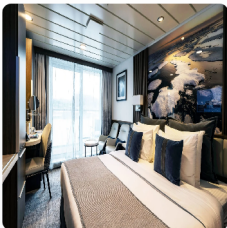
Einzelbelegung


€ 18.594
 pro Person

Gemeinschaftsbelegung


€ 12.396
 pro Person

Balcony Stateroom Category A - Solo



Doppelbelegung


€ 13.276
 pro Person

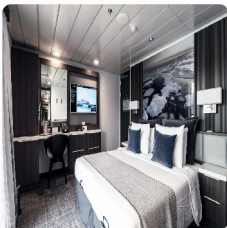
Einzelbelegung


€ 19.914
 pro Person

Gemeinschaftsbelegung


€ 13.276
 pro Person

Balcony Stateroom Superior



Doppelbelegung


€ 14.556
 pro Person

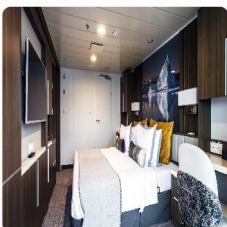
Einzelbelegung


€ 21.834
 pro Person

Gemeinschaftsbelegung


€ 14.556
 pro Person

Junior Suite



Doppelbelegung


€ 17.356
 pro Person

Einzelbelegung


€ 26.034
 pro Person

Captain's Suite



Doppelbelegung



€ 19.836

pro Person

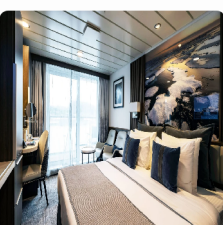
Einzelbelegung




€ 29.754

pro Person

Balcony Stateroom Category C




Doppelbelegung



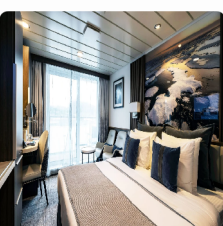
Nicht verfügbar

Einzelbelegung




Nicht verfügbar

Balcony Stateroom Category B




Doppelbelegung



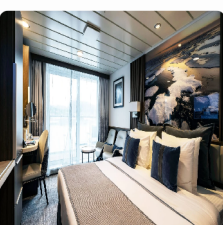
Nicht verfügbar

Einzelbelegung




Nicht verfügbar

Balcony Stateroom Category A




Doppelbelegung



Nicht verfügbar

Einzelbelegung



Nicht verfügbar



Day 1 Arrive in Oslo

Having made your way to Oslo, you will be met by a representative of Aurora Expeditions and transferred to our group hotel. Upon arrival at your included hotel, please visit the Aurora Expeditions hospitality desk to collect your luggage cabin tags and to speak with our ground operations team, who may have information to share with you about pre-embarkation or to provide you with information about where to dine, withdraw cash or purchase last minute items from a local pharmacy or supermarket. The remainder of your time is at leisure. All meals today are at your own expense. Accommodation: Oslo Hotel (to be advised).

Day 2 Fly to
Longyearbyen,
embarkation

This morning, please ensure your cabin luggage is fitted with cabin tags clearly labelled with your name and cabin number. Enjoy breakfast at the hotel before transferring to the airport for our charter flight to Longyearbyen for embarkation. Any valuables or personal items should be kept on you throughout the day. In Longyearbyen, explore the town on a guided tour. After the tour, you will be transferred directly to the pier to embark in the late afternoon. Settle into your cabin before attending important safety briefings and enjoy the thrill of departure as we 'throw the lines' and set sail. *Note: the excursion is contingent on the arrival time of our charter flight to Longyearbyen.

Days 3-7
Spitsbergen

The island of Spitsbergen is the largest in the Svalbard Archipelago and offers Arctic wilderness at its best. The members of our experienced Expedition Team, who have made countless journeys to this area, will use their expertise to tailor our day-to-day itinerary, choosing the best options, based on the prevailing weather, sea-ice conditions and the possibility of encounters with wildlife. Phenomenal fjords, magnificent mountain ranges, and a polar desert rich in fossils set the stage for heroic tales of early exploration. See walrus hauled-out on sea ice or on beaches. On land, we stretch our legs on walks across tundra carpeted in brightly coloured wildflowers. We visit towering cliffs noisy with nesting guillemots and puffins, and scree slopes that hold Svalbard's largest little auk colonies. If you have chosen an optional activity such as kayaking, you will have an opportunity to enjoy that activity when conditions allow. For those who are enthusiastic to participate in a polar plunge, as soon as conditions are suitable, you will hear the announcement to prepare for an exhilarating dip – a memory you will savour for years to come.

Day 8
Disembark in
Longyearbyen,
fly to Oslo

During the early morning, we cruise back into Longyearbyen. Farewell your Expedition Team upon disembarkation and enjoy some free time before transferring to the airport for your return charter flight to Oslo to continue your journey. *Note: the arrival time in Oslo is contingent on the approved allocated slot for our charter flight to and from Longyearbyen, which we expect to receive in March 2027.

Im Preis inbegriffen

- All transfers as mentioned in the itinerary.
- One night's hotel accommodation including breakfast, in Oslo on Day 1.
- Sightseeing tour of Longyearbyen on Day 2, prior to embarkation (time permitting).
- Return charter flights between Oslo and Longyearbyen.
- Onboard accommodation during voyage, including daily cabin service.
- All meals, snacks, tea, coffee, soft drinks and juices during voyage.
- Beer and house wine with dinner.
- Captain's Farewell reception including four-course dinner, house cocktails, house beer and wine, non-alcoholic beverages.
- All shore excursions and Zodiac cruises.
- Educational lectures and guiding services provide by Expedition Team.
- Complimentary access to onboard expedition doctor and medical clinic (initial consultation).
- One 3-in-1 waterproof, polar expedition jacket.
- Complimentary use of Muck Boots during the voyage.
- Comprehensive pre-departure information.
- Port surcharges, permits and landing fees.
- Gratuities during excursions and enrichment program for local guides, drivers, venues and local sites.
- Wi-Fi. *Please note we travel to remote regions and therefore the connection can be unreliable.*

Nicht im Preis inbegriffen

- International or domestic flights – unless specified in the itinerary.
- Transfers – unless specified in the itinerary.
- Airport arrival or departure taxes.
- Passport, visa, reciprocity and vaccination fees and charges.
- Travel insurance or emergency evacuation charges.
- Hotel accommodation and meals – unless specified in the itinerary.
- Optional excursions and optional activity surcharges.
- All items of a personal nature, including but not limited to, alcoholic beverages (outside of dinner service), on board gratuities*, laundry services, personal clothing, medical expenses, email or phone charges.

**A \$15 USD per person per day gratuity for the crew is automatically added to your onboard account. It is at your discretion if you would like to remove the tip (or adjust the amount) when you settle your bill. It is not necessary to tip the expedition team members. This gratuity amount is included for suites as part of their 'Suite Benefits'.*

Ihr Schiff

Ihr Schiff ist die "Sylvia Earle". Ausführlich stellen wir Ihnen dieses Schiff auf unseren Schiffseiten vor. [Ausführliche Informationen zu diesem Schiff.](#)

Passagiere
130

Bordsprachen


Eisklasse
1A

