

IHRE REISE

Südgeorgien & Antarktis – Große Expedition ins Südpolarmeer

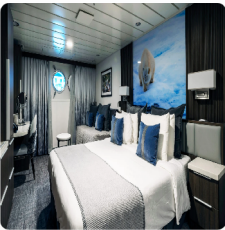
Reisetermin
 08.01.2027 - 27.01.2027

Reisedauer
 20 Tage

Reederei / Schiff
 Sylvia Earle / Aurora Expeditions



Aurora Stateroom Triple Share

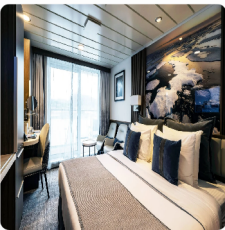


Dreibettbelegung



Nicht verfügbar

Balcony Stateroom Category A - Solo



Doppelbelegung



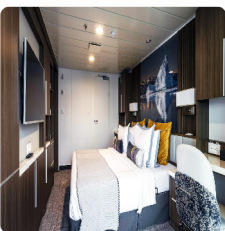
Nicht verfügbar

Einzelbelegung



Nicht verfügbar

Junior Suite



Doppelbelegung



Nicht verfügbar

Einzelbelegung



Nicht verfügbar

Balcony Stateroom Category B - Solo



Doppelbelegung



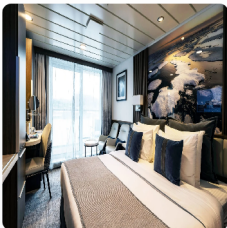
Nicht verfügbar

Einzelbelegung



Nicht verfügbar

Balcony Stateroom Category B



Doppelbelegung



Nicht verfügbar

Einzelbelegung



Nicht verfügbar

Aurora Stateroom Superior



Doppelbelegung



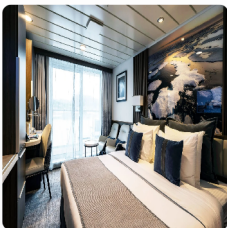
Nicht verfügbar

Einzelbelegung



Nicht verfügbar

Balcony Stateroom Category C - Solo



Doppelbelegung



Nicht verfügbar

Einzelbelegung



Nicht verfügbar

Balcony Stateroom Superior



Doppelbelegung



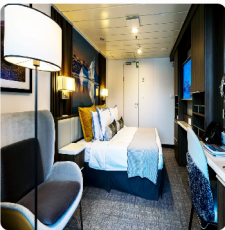
Nicht verfügbar

Einzelbelegung



Nicht verfügbar

Captain's Suite



Doppelbelegung



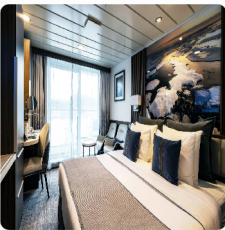
Nicht verfügbar

Einzelbelegung



Nicht verfügbar

Balcony Stateroom Category C



Doppelbelegung



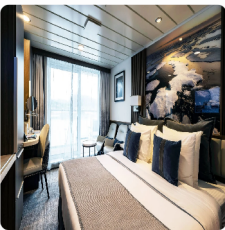
Nicht verfügbar

Einzelbelegung



Nicht verfügbar

Balcony Stateroom Category A



Doppelbelegung



Nicht verfügbar

Einzelbelegung



Nicht verfügbar



Day 1 Arrive
Ushuaia

Arrive in Ushuaia, where you will be met by a representative of Aurora Expeditions and transferred with your fellow expeditioners to your assigned pre-voyage hotel. If you are already in Ushuaia, we ask you to make your way to your hotel. Check-in is from 3.00 pm. This afternoon, visit the Aurora Expeditions hospitality desk in the hotel lobby, between 3.00 pm and 7.00 pm, to collect your luggage tags, and confirm if you wish to join our Lake Escondido pre-embarkation tour tomorrow. Our team will confirm details regarding your embarkation day, answer any questions and provide you with information on where to dine or purchase last minute items. Expeditioners arriving after 7.00 pm will find a welcome pack waiting for them at check-in. We ask you to visit our hospitality desk tomorrow between 8.00 am – 8.45 am. The remainder of your time is at leisure. All meals today are at your own expense. Assigned accommodation: To be advised

Day 2
Embarkation

This morning, enjoy breakfast and check-out. Please ensure your cabin luggage is fitted with cabin tags clearly labelled with your name and cabin number. Take your cabin luggage to hotel reception, prior to, or at check-out. Your luggage will be stored and transferred directly to the port for clearance, to be placed in your cabin ahead of your arrival on board. Please keep any valuables or personal items with you throughout the day. Those wishing to join our Lake Escondido tour today, please meet in the hotel lobby at 8.45 am. This tour offers us an unforgettable panoramic drive through big valleys of glacial origin, evergreen and deciduous forests, waterfalls and rivers, in the vastness of the Andes Mountain Range. We will leave Ushuaia city to the northeast of Tierra del Fuego, driving through peat bog valleys to reach Garibaldi Pass, only accessible by a winding road that will take us to a panoramic point. From here we will have amazing panoramic views of Lake Escondido and, if weather conditions allow, of Fagnano Lake. We will start our descent towards the northeast to reach Fagnano Lake's shore where we will visit a local ranch. After appreciating the landscape, you will have the chance to enjoy the typical Fuegian Lamb barbecue. Enjoy some free time there before returning to Ushuaia for ship embarkation. Alternatively, enjoy your day at leisure and meet at your hotel lobby or from the meeting point at the parking lot near the pier (details will be given by our ground staff at the hotel), to be transferred to the pier for embarkation. Once onboard, you'll have time to settle into your cabin before our important mandatory briefings. As the ship pulls away from port, we'll gather on the deck to commence our adventure with spectacular views over Ushuaia and Tierra del Fuego. This evening get to know your fellow expeditioners and friendly expedition team and crew at a welcome dinner to celebrate the start of a thrilling adventure to Antarctica.

Day 3 At Sea

As we commence our trip across the South Atlantic Ocean towards the Falklands-Malvinas, we make the most of our time getting comfortable with the motions of the sea. Our expedition team prepare you for our first landing with important wildlife guidelines, biosecurity procedures, and start our lecture program to help you learn more about the region's history, wildlife and environment. Our wildlife experiences begin as we enjoy watching and photographing the many seabirds, including majestic albatrosses and giant petrels following the vessel. They rise and fall skilfully, using air currents created by the ship to gain momentum.

Day 4
Falklands-Malvinas

The Falklands-Malvinas comprises two large islands (East and West Falkland), with over 700 islands scattered off the coast. All but seven of these are uninhabited, with windswept coastlines, white sand beaches and crystal-clear water. These beautifully barren islands are true wildlife havens, sheltering an impressive diversity of birdlife, including the largest black-browed albatross colony on earth. The cold, nutrient-rich waters surrounding the islands make this a prime location for spotting marine life. There are many beautiful areas to explore across the Falklands-Malvinas, each offering a unique perspective on this magnificent archipelago. Your experienced expedition team, who have made countless journeys to this area, will use their expertise to design your voyage from day to day, choosing the best options based on the prevailing winds, weather and wildlife opportunities. We generally make landings or Zodiac excursions twice a day. Even though we are north of the Antarctic Convergence it can be quite chilly here, so you will want to layer up before joining Zodiac cruises into rocky coves or along sea cliffs, keeping watch for seals, sea lions, dolphins and penguins. Zodiacs will also shuttle you from the ship to land, where you may visit albatross colonies, penguin rookeries and perhaps even have a traditional English 'tea and scones' at a local cottage. Conditions permitting, we plan to land in historic Stanley, the capital of the Falklands-Malvinas. This charming town has a distinctly British character, with terraced town houses, pioneer cottages and even an iconic red telephone box! Colourful buildings house cosy cafes, English pubs, souvenir shops, a post office and the fascinating Historic Dockyard Museum, with displays on the maritime history of the Falkland Islands, natural history and links to Antarctica. If you have chosen an optional activity, you will have the option to do that whenever conditions allow, and of course keen polar plungers will have the chance to fully immerse themselves in polar waters - conditions permitting!

Days 5-6 At
Sea

Between the Falklands-Malvinas and South Georgia, you will be enthralled by the ceaseless flight of the many seabirds that follow and circle the ship. Our onboard lecture program will continue with presentations from our team of experts. You can also enjoy the many facilities on the ship, borrow a book from our well-stocked library or perhaps stay active in the fitness centre.

Day 7 At Sea /
South Georgia

Sea and weather conditions will determine our arrival time into South Georgia today. As you near the rugged island of South Georgia, spare a thought for Captain James Cook, who arrived here in 1775 and believed it to be the northern tip of a great southern continent! In fact, it is a small island only 176 km (110 mi) long, but with a 3,000 m (9,842 ft) snow-capped mountain range, some of the world's largest congregations of wildlife and a truly fascinating human history, South Georgia is an island of incredible riches. On approach, jagged mountain peaks rise steeply, while seabirds are often spotted soaring around the ship. We will sail down the coast, taking in the spectacular glaciated scenery. This enchanting coastline is yours to explore! If time and weather conditions permit, en route we could pass close to Shag Rocks, a fascinating group of jagged rocky islets protruding from the sea, in the proximity of South Georgia.

Days 8-11
 South Georgia

Your experienced expedition team will use their local knowledge to plan your voyage from day to day, choosing the best options based on the prevailing weather, sea state and wildlife opportunities. Remember to layer up before joining Zodiac excursions that may zip into craggy coves and along the rocky coastline in search of nesting penguins, seal haul-outs and bird cliffs. Remember to keep an eye out for South Georgia's kelp forests as well - these remarkable underwater ecosystems are quite mesmerising as their fronds sway back and forth on the water's surface. Our Zodiacs will also transport ashore, where you can visit some of the largest king penguin colonies on Earth, take a guided walk among fur seals and elephant seals (making sure you listen to your guides and keep your distance!) and wander along pebbled streams and grassy glacial outwash plains. We also hope to visit the remnants of South Georgia's thriving whaling stations and pay our respects to Sir Ernest Shackleton, whose incredible voyage of survival is synonymous with this island. If you have chosen an optional activity, you will have the option to do that whenever conditions allow. In addition to Zodiac excursions and shore excursions, we may ship cruise through fjords with towering cliffs of ancient stone, or into deeply indented bays towards dramatic glacier fronts. This is a great time to find a comfy spot in the observation lounge or make your way to the bridge (open at the Captain's discretion) to enjoy uninterrupted views of South Georgia's majestic coast.

Day 12 South
 Georgia / At
 Sea

Sea and weather conditions will determine our departure time from South Georgia today.

Days 13-14 At
 Sea

Attend informative lectures to learn about Antarctica as we sail across the Scotia Sea towards the white continent. You may want to relax in the sauna and jacuzzis or stay active in the gym; the choice is yours on how you want to enjoy days at sea.

Days 15-18
 Antarctic
 Peninsula

En route to the Peninsula, if time and weather permits, we may attempt to follow the coastline of Elephant Island, a half-submerged mountain cloaked with an ice sheet at the outer limits of the South Shetland Islands. It's almost impossible to describe the feeling of arriving in Antarctica. Spotting your first iceberg and taking a deep breath of some of the most fresh, crisp air on earth is an experience that will stay with you forever. Once we arrive, the western side of the Antarctic Peninsula and the South Shetland Islands are ours to explore, and we have a host of choices available to us. Because we are so far south, we will experience nearly 24 hours of daylight and the days can be as busy as you wish. Rug up before joining Zodiac cruises along spectacular ice cliffs or among grounded icebergs, keeping watch for whales, seals and porpoising penguins. Our trusty Zodiacs will also shuttle us ashore, where we may visit penguin rookeries, discover historic huts and explore some of our favourite spots along the peninsula. While ashore we aim to stretch our legs, wandering along pebbly beaches or perhaps up snow-covered ridgelines to vantage points with mountains towering overhead and ice-speckled oceans below. In addition to Zodiac cruises and shore excursions, we may ship cruise some of the narrow, dramatic straits separating offshore islands from the mainland, or linger in scenic bays to watch whales travelling or feeding. Keep an ear out for the creak and deep rumble of glaciers as they carve into the sea. Take a quiet moment to experience the wonder of this incredible white continent.

Day 19 Fly
 King George
 Island to Punta
 Arenas

As we approach Frei Base on King George Island, it is time to farewell Antarctica and our amazing adventure before boarding our flight (approximately one hour forty-five minutes) to Punta Arenas, Chile. There is time for reflection and discussion about what we have seen and experienced. We hope you become ambassadors for Antarctica telling your family, friends and colleagues about your journey to this magical place, advocating for its conservation and preservation so that they might one day visit the region to experience what you have been lucky to see and do here. On arrival at the Punta Arenas airport, you will be transferred to our group hotel. Note: King George Island is located at the northern tip of the Antarctic Peninsula in the South Shetland Islands and is one of the most remote places on Earth. A clear sky with perfect visibility is required for safe take-off and landing. We apologise in advance for any possible delays. Accommodation: To be advised

Day 20 Depart
 Punta Arenas

After breakfast, bid a fond farewell to your fellow travellers as we continue our onward journeys, hopefully with a newfound sense of the immense power of nature (breakfast included). A transfer to the airport is included in the voyage fare. Note: Should your flight not proceed due to local conditions; you will remain on the ship until it is deemed achievable to return to Punta Arenas. Refer to our terms and conditions for further details.

Im Preis inbegriffen

- All airport transfers mentioned in the itinerary.
- One night's hotel accommodation including breakfast, in Ushuaia on Day 1.
- Lake Escondido tour in Ushuaia, on Day 2.
- Charter flight from King George Island to Punta Arenas on Day 19.
- Onboard accommodation during voyage, including daily cabin service.
- All meals, snacks, tea, coffee, soft drinks and juices during voyage.
- Beer and house wine with dinner.
- Captain's Farewell reception including four-course dinner, house cocktails, house beer and wine, non-alcoholic beverages.
- All shore excursions and Zodiac cruises.
- Educational lectures and guiding services provided by Expedition Team.
- Complimentary access to onboard expedition doctor and medical clinic (initial consultation).
- One 3-in-1 waterproof, polar expedition jacket.
- Complimentary use of Muck Boots during the voyage.
- Comprehensive pre-departure information.
- Port surcharges, permits and landing fees.
- Wi-Fi*.

**Please note we travel to remote regions and therefore the connection can be unreliable.*

Nicht im Preis inbegriffen

- International or domestic flights – unless specified in the itinerary.
- Transfers – unless specified in the itinerary.
- Airport arrival or departure taxes.
- Passport, visa, reciprocity and vaccination fees and charges.
- Travel insurance or emergency evacuation charges.
- Hotel accommodation and meals – unless specified in the itinerary.
- Optional excursions and optional activity surcharges.
- All items of a personal nature, including but not limited to alcoholic beverages (outside of dinner service), gratuities, laundry services, personal clothing, medical expenses or phone charges.

Note: A \$15 USD per person per day gratuity for the crew is automatically added to your onboard account. It is at your discretion if you would like to remove the tip (or adjust the amount) when you settle your bill. It is not necessary to tip the expedition team members. This gratuity amount is included for suites as part of their 'Suite Benefits'.

Ihr Schiff

Ihr Schiff ist die "Sylvia Earle". Ausführlich stellen wir Ihnen dieses Schiff auf unseren Schiffseiten vor. [Ausführliche Informationen zu diesem Schiff.](#)

Passagiere

130

Bordsprachen



Eisklasse

1A

