

IHRE REISE

Die Schottischen Inseln: Historische Pfade und Wildnis

Reisetermin

23.05.2026 - 03.06.2026

Reisedauer

12 Tage

Reederei / Schiff

Scenic Eclipse / SCENIC Luxury Cruises & Tours



Scenic Eclipse Deluxe Veranda Suite DB, Deck 5



Doppelbelegung



€15.290

pro Person

Einzelbelegung



€31.830

pro Person

Scenic Eclipse Deluxe Veranda Suite DA, Deck 5



Doppelbelegung



€15.290

pro Person

Einzelbelegung



€31.830

pro Person

Scenic Eclipse Deluxe Veranda Suite CA, Deck 6



Doppelbelegung



€15.290

pro Person

Einzelbelegung



€31.830

pro Person

Scenic Eclipse Deluxe Veranda Suite AA, Deck 7



Doppelbelegung


€ 15.895
 pro Person

Einzelbelegung


€ 33.040
 pro Person

Scenic Eclipse Deluxe Veranda Suite BA, Deck 7



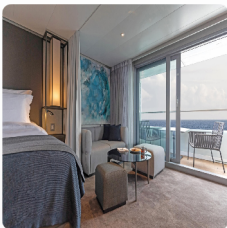
Doppelbelegung


€ 15.895
 pro Person

Einzelbelegung


€ 33.040
 pro Person

Scenic Eclipse Grand Deluxe Veranda Suite DD, Deck 5



Doppelbelegung


€ 16.225
 pro Person

Einzelbelegung


€ 33.700
 pro Person

Scenic Eclipse Panorama Suite P, Deck 8



Doppelbelegung


€ 32.670
 pro Person

Einzelbelegung


€ 66.590
 pro Person

Scenic Eclipse Grand Panorama Suite GP, Deck 6



Doppelbelegung


€33.275
 pro Person

Einzelbelegung


€67.800
 pro Person

Scenic Eclipse Owners Penthouse Suite OP, Deck 9



Doppelbelegung


€39.600
 pro Person

Einzelbelegung


€80.450
 pro Person

Scenic Eclipse Veranda Suite B, Deck 7



Doppelbelegung


 Nicht verfügbar

Einzelbelegung


 Nicht verfügbar

Scenic Eclipse Veranda Suite A, Deck 8



Doppelbelegung


 Nicht verfügbar

Einzelbelegung


 Nicht verfügbar

Scenic Eclipse Spa Suite SA, Deck 9



Doppelbelegung



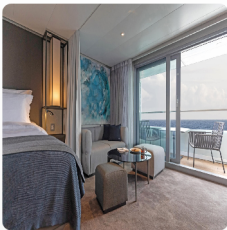
Nicht verfügbar

Einzelbelegung



Nicht verfügbar

Scenic Eclipse Grand Deluxe Veranda Suite AD, Deck 8



Doppelbelegung



Nicht verfügbar

Einzelbelegung



Nicht verfügbar

Scenic Eclipse Veranda Suite D, Deck 5



Doppelbelegung



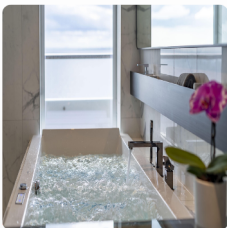
Nicht verfügbar

Einzelbelegung



Nicht verfügbar

Scenic Eclipse Spa Suite S, Deck 8



Doppelbelegung



Nicht verfügbar

Einzelbelegung



Nicht verfügbar

Scenic Eclipse Spa Suite SB, Deck 9



Doppelbelegung



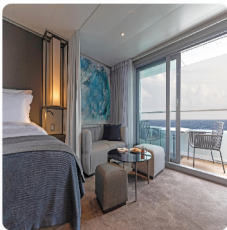
Nicht verfügbar

Einzelbelegung



Nicht verfügbar

Scenic Eclipse Grand Deluxe Veranda Suite CD, Deck 6



Doppelbelegung



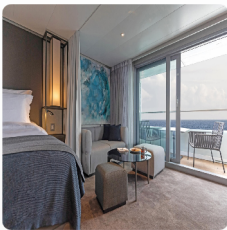
Nicht verfügbar

Einzelbelegung



Nicht verfügbar

Scenic Eclipse Grand Deluxe Veranda Suite BD, Deck 7



Doppelbelegung



Nicht verfügbar

Einzelbelegung



Nicht verfügbar

Scenic Eclipse Veranda Suite C, Deck 6



Doppelbelegung



Nicht verfügbar

Einzelbelegung



Nicht verfügbar

Scenic Eclipse Two-Bedroom Penthouse Suite TP, Deck 9



Doppelbelegung



Nicht verfügbar

Einzelbelegung



Nicht verfügbar



Dublin, Ireland

Welcome to Dublin, the capital of the Republic of Ireland. Named Dubh Linn by the Vikings, this city on the River Liffey is a heady mix of heritage, culture and craic (fun). Steep in 1000 years of history, the Dublin is resplendent with cobbled streets and Georgian architecture. It is known for its friendly locals, hedonistic pub culture and has a rich literary scene, producing four Nobel Laureates

Tag 1

Board Scenic Eclipse this afternoon and be warmly welcomed by the Captain and the crew. Enjoy a glass of Champagne, meet your butler and settle into your spacious suite. Then join your fellow guests on the Sky Deck as you cruise north towards Belfast.

Please book your flight to arrive into Dublin prior to 02:00 PM.

Docked: 18:00

Belfast, Northern Ireland, United Kingdom

Arrive in Belfast this morning, a city with a dynamic arts and music scene and a rich maritime heritage. It was the place where the Titanic was built, and you can learn more about the ill-fated ship at the iconic Titanic Belfast Museum.

Beyond the city limits, discover the breathtaking landscape of the World Heritage-listed Giant's Causeway, some 40,000 columns lying at the foot of basalt cliffs. Your ship will stay in Belfast until later this evening, giving you the opportunity to wander through the city's charming streets lined with historic architecture as the lights start to sparkle.

Tag 2

Scenic Freechoice:

Spectacular Giant's Causeway: Discover the Giant's Causeway from Portrush, exploring its legendary basalt columns and dramatic coastal views. On the return, enjoy a scenic drive with a photo stop at the cliffside ruins of Dunluce Castle.

Bushmills Distillery: Visit the historic Old Bushmills Distillery, the world's oldest licensed whiskey distillery, for a guided tour and tasting. Discover the traditional craft of triple distillation before returning via a scenic drive.

Belfast Highlights & Titanic Experience: Uncover Belfast's industrial heritage with a panoramic city tour and visit to Titanic Belfast, where interactive exhibits tell the story of the legendary liner from its creation to its historic voyage.

Docked: 08:00 - 21:00

Iona Island, Scotland, United Kingdom > Staffa, Scotland, United Kingdom

Iona Island is a jewel of Scotland's Inner Hebrides. Explore the medieval Iona Abbey, known as the cradle of Celtic Christianity. Wander through the peaceful ruins of the nearby Nunnery, which overlooks the azure waters of the Atlantic. Follow the Nunnery Walk, a scenic path offering breathtaking views of the island's rugged coastline and pristine beaches.

Relax in your spacious suite on board as you cruise to Staffa, an enchanting island off the coast of Scotland. Here you may have the opportunity to explore Fingal's Cave, a sea cave renowned for its dramatic basalt columns to this geological marvel on a zodiac.

Tag 3

Scenic Freechoice:

Iona Abbey: Discover the spiritual heart of Scotland with a visit to Iona Abbey, rich in early Christian history and medieval carvings. Enjoy time to explore the island's peaceful setting and charming village.

Iona Short Circular Walk: Enjoy a guided walk around peaceful Iona, discovering its wildlife, geology and stunning coastal views. End near the jetty with time to explore the village or soak in the island's calm atmosphere.

Iona Walk the South End: Take a guided walk to Iona's southern shores, exploring historic sites and stunning coastal views, including the beach where St. Columba is said to have first landed from his journey from Ireland.

Offshore: 08:00 - 14:00 | 16:00 - 20:00

Oban, Scotland, United Kingdom > Cruising Sound of Mull, United Kingdom

This morning you'll explore Oban and its charming harbour, dotted with colourful fishing boats and framed by lush hillsides. Oban is synonymous with whiskey and is known as the seafood capital of Scotland.

Later in the day, cruise through the Sound of Mull, past towering cliffs, tranquil bays, and hidden coves. Head to the Observation Deck with the Discovery Team for the chance to spot playful seals, dolphins, and majestic sea eagles. Or curl up in a cabana on the Sky Deck with a refreshing drink to watch the magnificent scenery float by.

Scenic Freechoice:

Arduaine Gardens: Enjoy a scenic journey from Oban to Inveraray, passing lochs and castle ruins en route. Take in views of the grand Inveraray Castle and its beautiful gardens, home to the Dukes of Argyll.

Oban Walking Tour with Dunollie Museum: Take a guided walk through Oban, with views from McCaig's Tower, a visit to St Columba's Cathedral, and time to explore historic Dunollie before browsing the town or returning to the pier.

Inveraray Castle: Journey from Oban to Inveraray, enjoying breathtaking landscapes and historic castle ruins. Experience the charm of Inveraray and its impressive castle nestled in beautiful grounds.

Scenic Discovery:

Today you may get the opportunity to enjoy immersive Discovery experiences such as kayaking and hiking, subject to weather conditions and harbour master approval.

Offshore: 08:00 - 17:00

Tag 4

St. Kilda, Scotland, United Kingdom > Cruising Flannan Isles, United Kingdom

St. Kilda is a World Heritage-listed site nestled in the remote Outer Hebrides. This pristine archipelago is home to one of Europe's most important seabird colonies, playful seals and dramatic cliffs that rise from the Atlantic Ocean. Immerse yourself in the rich history and culture of the resilient inhabitants.

Cruise through the Flannan Isles, where the disappearance of three lighthouse keepers at the turn of the 20th century is one of Ireland's greatest mysteries. Spot wildlife including puffins, whales and dolphins as you relax on your private verandah with afternoon tea delivered by your butler.

Your Discovery Team will be out on the open deck whilst cruising, providing valuable insights and ready to answer your questions about the wildlife you may encounter—have your in-suite binoculars on hand to enhance the experience.

Scenic Discovery:

Today you may have the possibility to enjoy immersive Discovery experiences such as Zodiac cruising and kayaking, subject to weather conditions and harbour master approval.

Offshore: 08:00 - 14:00

Tag 5

Portree, Isle of Skye, Scotland, United Kingdom

Welcome to Portree, a picturesque harbour town on the stunning Isle of Skye. Fishing boats bob gently in the harbour, which is lined with candy-coloured buildings. Explore the quaint streets and boutique shops, cosy cafés, and traditional pubs that offer a taste of local hospitality. Take in breathtaking views of the surrounding rugged landscape and majestic Cuillin Mountains.

This afternoon, Scenic Eclipse will cruise to Stornoway on the Isle of Lewis. Join the Discovery Team in the state-of-the-art theatre for a lecture about the upcoming ports. In the evening, choose one of up to 10 world class dining experiences or request a private meal delivered to your suite by the butler.

Scenic Freechoice:

Loch Portree Hike: Join a guided hike along Portree Bay's north side, uncovering the town's history and architecture, named for King James V's 1540 visit. Admire views of Apothecary's Tower, Clan Nicolson's memorial and distant Cuillin Hills, with vistas to Raasay's Dun Caan, ending at the harbour.

Dunvegan Castle & The Cuillin: Journey across Skye to Dunvegan Castle, the 13th-century Clan MacLeod seat, inhabited for over 800 years. Admire historic heirlooms like the Fairy Flag and stroll its gardens with Rory Mòr's Cascade, enjoying Cuillin Mountain views on the return to Portree.

Northern Scenic Drive: Travel north from Portree to Skye's Trotternish Peninsula, admiring the Old Man of Storr and Kilt Rock's 200-foot cliff with its waterfall. Visit the Skye Museum of Island Life and Flora MacDonald's grave in Kilmuir, then enjoy leisure time in Portree's harbour.

Eilean Donan Castle: Venture south of Portree, crossing Skye Bridge past the majestic Cuillin Mountains to Eilean Donan Castle, a 13th-century icon on a sea loch island, restored in the 1930s. Explore its history, then enjoy a photo stop in Kyleakin, a charming fishing village with Norse roots, before returning to Portree.

Offshore: 08:00 - 18:00 | Docked: 22:00 - Overnight

Tag 6

Stornoway, Isle of Lewis, Scotland, United Kingdom

Immerse yourself in the rich tapestry of Gaelic culture and heritage in Stornoway, which was originally a Viking settlement. Explore the historic Lews Castle, the mysterious Callandish standing stones, and delight in the warmth of traditional Hebridean hospitality.

As we cruise towards the Shetland Islands, you may wish to unwind in the expansive Senses Spa. Book a luxurious massage# or facial# or try one of the alternative therapies, such as Japanese shiatsu, Indian Ayurvedic massage and Tibetan bowl sound healing.

Scenic Freechoice:

Isle of Harris Distillery Experience: Journey south from Stornoway to Tarbert, visiting the Isle of Harris Distillery for an immersive tour of its award-winning gin and The Hearach whisky. Explore production halls, sample spirits and browse Harris Tweed and local crafts, returning via scenic island landscapes.

Lews Castle Walk: Stroll along Stornoway's seafront and coastal path, discovering local history and passing the historic Lews Castle grounds. Visit the grand castle and Museum for the Hebrides before returning to the ship at your leisure.

Scenic Harris: Venture from Stornoway to Tarbert on Harris for free time to explore its charming harbour and shops. Visit stunning Horgabost Beach at Luskentyre, then enjoy scenic photo stops before returning to Stornoway.

Scenic Isle of Lewis: Travel across Lewis to Port of Ness, exploring its historic harbour and Harbour View Gallery. Visit legendary St. Moluag Church, then admire the 1862 Butt of Lewis Lighthouse with Atlantic views, capturing photos before returning to Stornoway.

Garrannan Blackhouse Village & Dun Carloway Broch: Explore ancient island heritage visiting Dun Carloway Broch, a remarkable Iron Age tower. Discover traditional life at Garrannan Blackhouse Village, then enjoy a scenic drive across the wild Lewis moorlands.

Docked: Overnight - 14:00

Tag 7

Lerwick, Shetland Islands, Scotland, United Kingdom

Lerwick is the heart of the Shetland Islands. Be enchanted by this historic seaport, where Norse heritage meets Scottish charm. Explore the winding streets lined with colourful buildings, browse the bustling shops and sample local delicacies at the cafés. Discover the fascinating history of the islands at the Shetland Museum and Archives or pay a visit to the bustling market square.

Enjoy dinner in town or return to the ship for a relaxed meal in the alfresco Yacht Club or fine French cuisine at Lumière. Visit the state-of-the-art theatre this evening for world-class musical productions.

Scenic Freechoice:

Sumburgh Head to Jarlshof Hike: Embark on a guided hike through Shetland's southern reaches from Lerwick, featuring views of Mousa Broch (weather permitting). Hike to Sumburgh Head's RSPB Reserve for birdlife, then explore Jarlshof's 5,000-year-old archaeological site, returning with scenic views and pony sightings.

Jarlshof & Southern Shores: Depart from Lerwick to Shetland's southern tip, stopping at Mousa Broch and St Ninian's Isle, then explore the remarkable Jarlshof archaeological site.

Town Walk & Shetland Museum: Discover Lerwick's rich history on a guided walk from Victoria Pier through the Old Town, exploring its maritime past, iconic Lodberries, and narrow lanes. Visit the historic Town Hall and conclude at the Shetland Museum, with time to browse local shops.

Western Shetland - Meet the Locals: Discover Shetland's culture with visits to Lerwick, a local fisherman in Hamnavoe, Shetland ponies in Tingwall and a jewellery workshop—all set against stunning scenery.

Offshore: 09:00 - 21:00

Tag 8

Kirkwall, Orkney Islands, Scotland, United Kingdom

Welcome to Kirkwall, the capital of the Orkney Islands. Explore the iconic St. Magnus Cathedral, a masterpiece of medieval architecture, or wander through the charming streets lined with quaint shops and cosy cafés. Dive into Orkney's rich heritage at the Orkney Museum, housing artefacts dating thousands of years. Other highlights include the Neolithic sites of Skara Brae and the Ring of Brodgar, offering glimpses into Orkney's prehistoric past.

Head to the Sky Deck this evening for a glass of Champagne as the ship departs Kirkwall or request your butler to deliver your favourite cocktail to your suite.

Scenic Freechoice:

Orkney Treasures with St Magnus Cathedral: Discover Orkney's heritage with visits to the Neolithic Heartland and the Ring of Brodgar, explore the ancient village of Skara Brae, stroll through historic Skaill House and finish at the majestic St Magnus Cathedral in Kirkwall.

Heart of Neolithic Orkney: Step back 5,000 years at Orkney's UNESCO Neolithic Heartland, wandering the Ring of Brodgar, Standing Stones of Stenness and Barnhouse Village. Admire sweeping views of Harray Loch and historic Scapa Flow along the way.

Sites of the South Isles & Taste of Orkney: Travel across Orkney's southern isles via the historic Churchill Barriers to visit the beautiful Italian Chapel. Enjoy local treats in Burray and explore the Fossil and Heritage Centre before returning to the ship.

Kirkjuvagr Gin Tasting & Kirkwall Town Walk: Explore historic Kirkwall on a guided tour, uncovering Viking tales along its harbour and flagstone streets. Visit St Magnus Cathedral, Earl's and Bishop's Palaces, then tour Kirkjuvagr Gin Distillery for a gin tasting with waterfront views, ending with a leisurely return or free time.

Docked: 08:00 - 18:00

Tag 9

Aberdeen, Scotland, United Kingdom

Nestled on the northeast coast, Aberdeen is Scotland's Granite City, with more than half its buildings constructed with stone from the local quarry. Wander through the picturesque streets of Old Aberdeen, where medieval buildings stand testament to centuries of history, and visit Marischal College and St. Machar's Cathedral. Indulge in the city's fresh seafood at its bustling markets or savour local delicacies in its quaint pubs.

While on board, you may wish to visit the gym for an invigorating workout or the PURE: Yoga & Pilates Studio for some guided stretching or aerial yoga.

Scenic Freechoice:

Aberdeen Highlights Panorama: Explore Aberdeen, "The Granite City," with visits to Duthie Park's indoor gardens, King's College Chapel and St Machar Cathedral, ending with a scenic drive through Union Street and Queen's Road.

Glen Garioch Distillery & Granite City: Head to Glen Garioch distillery to experience authentic whisky-making and taste a smooth Highland Single Malt. Afterwards, take in the stunning sights of Aberdeen, famous for its beautiful granite buildings and rich history.

Aberdeenshire Highland Cattle: Journey to a traditional Banchory farm for a scenic drive, meeting Grace Noble's award-winning Highland cattle. Learn about their heritage and sustainable farming, then savour Aberdeenshire beef with tea, coffee and shortbread, immersing in Scotland's rural charm.

Crathes Castle & Aberdeen Highlights: Travel through Royal Deeside to Crathes Castle, a 16th-century tower house known for its fairytale turrets and historic Horn of Leys. Explore the colourful walled gardens, then enjoy a panoramic drive through Aberdeen's striking granite architecture.

Docked: 08:00 - 19:00

Tag 10

Leith (Edinburgh), Scotland, United Kingdom

Arrive in Leith this morning, which was once Scotland's main port for trade and named one of the coolest neighbourhoods in the world. Explore the iconic Royal Yacht Britannia, once the floating residence of the British Royal Family. Wander along the historic Water of Leith Walkway, lined with pubs, galleries, and boutiques.

Your Discovery Yacht will dock overnight, so you have time to head into the historic city of Edinburgh, to see its iconic castle perched atop an ancient volcanic rock and its bustling streets. Back on board, settle in at the spacious Scenic Lounge Bar to enjoy your beverage of choice, whether it be aged whiskey or a glass of wine, and share your journey's favourite memories with your new friends.

Scenic Freechoice:

The City of Edinburgh & Castle: Drive through Edinburgh's Georgian New Town and historic Old Town, including Princes Street and the Royal Mile. Then visit Edinburgh Castle, perched on an extinct volcano, to explore royal history and view the Scottish Crown Jewels.

Scone Palace: Journey through Perthshire's scenic countryside to Scone Palace, once the crowning site of Scottish kings. Admire its lavish interiors with French furniture and artefacts, stroll the grounds with peacocks, and enjoy refreshments or the palace shop.

Edinburgh & the Royal Yacht Britannia: Explore Edinburgh's grandeur with a panoramic tour of its Georgian architecture, Royal Mile, Edinburgh Castle and Holyroodhouse. Then board the Royal Yacht Britannia to discover its luxurious state rooms and life at sea with the Queen.

Docked: 04:30 - Overnight

Tag 11

Leith (Edinburgh), Scotland, United Kingdom

Your journey of wonder ends this morning in Leith. After one final delicious breakfast on board Scenic Eclipse, it's time to disembark your ultra-luxury Discovery Yacht. Take with you a lifetime of memories of a truly exceptional journey in this unique part of Europe.

Please book your flight to depart out of Edinburgh after 12:00 PM.

Tag 12

Docked: 08:00

Spa treatments at additional cost. +All drinks on board, including those stocked in your mini bar, are included, except for a very small number of rare, fine and vintage wines, Champagnes and spirits

Helicopter not in operation in the United Kingdom.

The itinerary is a guide only and may be amended for operational reasons. As such Scenic cannot guarantee the voyage will operate unaltered from the itinerary stated above. Please refer to our terms and conditions for further information.

Im Preis inbegriffen

- Services und Annehmlichkeiten an Bord
- Maximal 229 Gäste an Bord (200 in den Polarregionen)
- Großzügige Suiten mit privater Veranda 2:1-Verhältnis
- Gäste- und Butlerservice für jeden Gast
- Zehn kulinarische Erlebnisse in neun Gourmet-Menues – von gemütlicher Atmosphäre bis zum eleganten Fine Dining
- Auswahl an Premium-Markengetränken mit über 101 Whiskysorten
- Scenic Discovery Ausflüge mit dem Zodiac
- Komplettes Kajakprogramm und Stand-up-Paddle-Boarding
- Kostenloser Expeditionsarka und Wasserflasche sowie die Nutzung von speziellen Polartiefeln
- Interessantes Vortrags- und Bildungsprogramm mit Experten an Bord
- Spezielle Observation Lounge und Terrasse für die beste Aussicht
- Swarovski-Teleskope an Deck sowie Ferngläser in der Suite, damit Sie keinen aufregenden Momente verpassen
- Senses Spa** auf 551 m2 mit Fitnesscenter, Yoga- und Pilatesstudio
- Außen-Vitalpools nachskandinavischem Vorbild
- Modernes Theater mittäglichem Unterhaltungs- und Bildungsangebot
- WLAN inclusive
- Inlandsflüge inkl. Gebühren
- Flughafentransfers
- Trinkgelder an Bord und an Land

Nicht im Preis inbegriffen

- Internationale Flüge, sofern nicht angegeben
- Reiseversicherungen
- Visa- oder Passgebühren (falls erforderlich)
- persönliche Ausgaben (Einkäufe, optionale Ausflüge)
- sonstige im Programm nicht genannte Leistungen

Ihr Schiff

Ihr Schiff ist die "Scenic Eclipse". Ausführlich stellen wir Ihnen dieses Schiff auf unseren Schiffseiten vor. [Ausführliche Informationen](#) zu diesem Schiff.

Passagiere

199

Bordsprachen



Eisklasse

PC-6

Special

Helikopter

