

IHRE REISE

# Expedition westl. Galapagos-Inseln

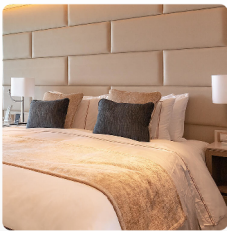
Reisetermin  
 05.04.2025 - 12.04.2025

Reisedauer  
 8 Tage

Reederei / Schiff  
 Silver Origin / Silversea



## Classic Veranda Suite



### Doppelbelegung

  
**€12.950**  
 pro Person

### Einzelbelegung

  
**€22.662**  
 pro Person

## Superior Veranda



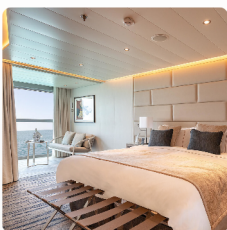
### Doppelbelegung

  
**€14.050**  
 pro Person

### Einzelbelegung

  
**€24.588**  
 pro Person

## Deluxe Veranda



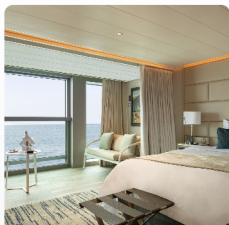
### Doppelbelegung

  
**€14.650**  
 pro Person

### Einzelbelegung

  
**€25.638**  
 pro Person

Medallion



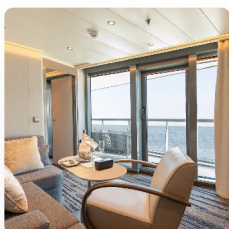
Doppelbelegung

  
**€ 23.600**  
 pro Person

Einzelbelegung

  
**€ 47.200**  
 pro Person

Silver Origin Silver Suite



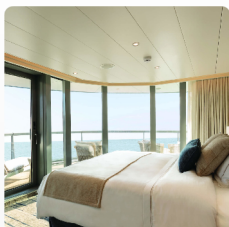
Doppelbelegung

  
**€ 28.700**  
 pro Person

Einzelbelegung

  
**€ 57.400**  
 pro Person

Silver Origin Royal Suite



Doppelbelegung

  
**€ 35.600**  
 pro Person

Einzelbelegung

  
**€ 71.200**  
 pro Person

Silver Origin Grand Suite



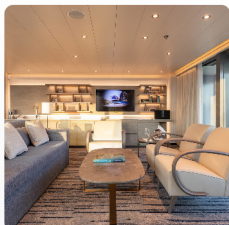
Doppelbelegung

  
**€ 43.300**  
 pro Person

Einzelbelegung

  
**€ 86.600**  
 pro Person

Silver Origin Owner's Suite



*Doppelbelegung*

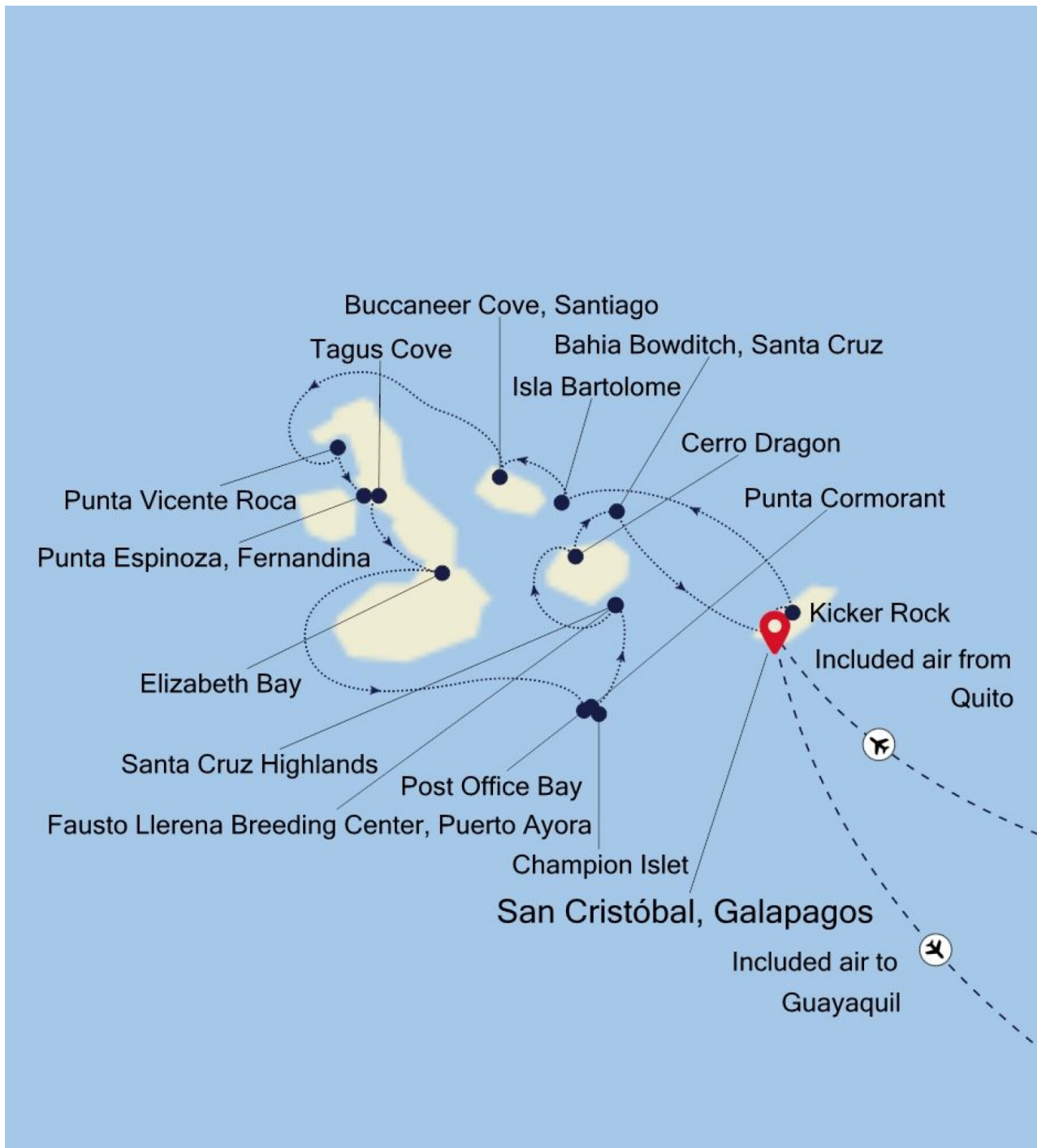


Nicht verfügbar

*Einzelbelegung*



Nicht verfügbar



San Cristóbal, Galapagos  
 Sa., 5. April

Tag 1

Like so many of the islands in the Galapagos San Cristobal is formed by dormant volcanoes. It lies to the east of the archipelago and is one of the oldest islands in the group. Approximately 6 000 people live on the island making their living from tourism fishing in government offices or off the rich volcanic soils with some limited farming existing in the highlands. Puerto Baquerizo Moreno on the southwestern tip of the island is the capital city of the Galapagos Islands. A statue of Charles Darwin graces the harbor marking one of the first places he likely stepped ashore in the 1830s.

Kicker Rock  
Sa., 5. April  
Ankunft 17:00

Tag 1

Kicker Rock is the vertical remnant of a former tuff cone less than 5 kilometers to the west of San Cristobal. Both its Spanish name "Leon Dormido" (Sleeping Lion) and English name Kicker Rock imply that it is one rock only -when in fact it is a larger one 300 meters long by 100 meters wide with a maximum height of approximately 150 meters and next to it an obelisk-like rock separated by a narrow channel some 20 meters deep. When approaching Kicker Rock, Blue-footed Boobies, Nazca Boobies and frigatebirds can be observed in the air, while sea lions can be seen along the shore. Snorkelers and divers have reported manta rays, hammerhead sharks and turtles. The Spanish name implies that the geological formation seen from the south resembles a sleeping lion. An interesting explanation for the English name suggests that James Colnett in 1794 likened it to famous landmarks in Portsmouth.

Isla Bartolome  
So., 6. April  
Ankunft 12:00

Tag 2

Our ship anchors in sight of the volcanic moonscape of Isla Bartolomé at Sullivan Bay. Zodiacs bring guests ashore to ascend a boardwalk of 388 steps. Passing through the arid volcanic landscape provides a chance to watch for lava lizards Galapagos Hawks and Blue-footed Boobies. However the climber's ultimate reward is one of the most beautiful panoramas in all of the Galapagos Islands – the view towards Pinnacle Rock with black volcanic cones of Baltra Daphne Major and Daphne Minor in the distance. On the way down watch how the sunlight catches the green of pioneering plant species in stark contrast against dark volcanic rock and look forward to time swimming and snorkeling from the golden beach at Bahia Dorada.

Buccaneer Cove, Santiago  
So., 6. April  
Ankunft 15:00

Tag 2

Buccaneer Cove is a colourful inlet on Santiago or James Island. It owes its name to some of the first visitors to the area: pirates. They came searching for water, tortoises, and some people say even places to hide their treasures. We don't know about any pirate's gold, but the area's landscape is a treasure. The geology combines some tuff red cones with impressive basalt lava dikes and sills. The erosion has carved caves and shaped some rocks into unique forms such as the Bishop's Rock. Palo Santo trees and some giant Prickly pear cactus cover the area, and at a distance, you can observe the impressive volcanos of Isabela Island. We will explore the area from our Zodiacs, searching for sea birds such as Nazca Boobies, Blue Footed Boobies, and Swallow-tailed Gulls. We can often find sea turtles and even reef sharks in this place. Also, in Buccaneer Cove, we can observe the two sea lions species: the Galapagos sea lion basking on the beaches and the fur seal looking for shade on the collapsed rocks along the coast.

Punta Vicente Roca (Isabela)  
Mo., 7. April  
Ankunft 15:00

Tag 3

Punta Vicente Roca is one of the marine sites Isabela Island has to offer. On the southern side of Ecuador Volcano, the tip of land on the western end of Isabela is named after Vicente Ramon Roca, President of Ecuador from 1845-49, who as Prefect of Guayas had proposed the Ecuadorian annexation of the Galapagos Islands in 1831. The geological formations, the underwater caves and lava tubes offer fascinating views of the coastline. The South Equatorial Countercurrent hits this part of the archipelago from the west and the water offers abundant food sources for different marine life and seabirds. It is normal to see Pacific green turtles, but sharks, rays, whales and dolphins can also be expected, apart from a small colony of fur seals. Blue-footed Boobies, Nazca Boobies, Brown Noddies and other seabirds nest in the cliffs and both the endemic Galapagos Penguins and Flightless Cormorants have established small colonies nearby. Marine iguanas also like this area because of the rich variety of seaweeds growing underwater along the western coast of Isabela. As a marine site, deepwater snorkeling is also possible at Punta Vicente Roca.

Punta Espinoza, Fernandina  
 Mo., 7. April  
 Ankunft 12:00

Tag 3

With the gentle slopes of La Cumbre volcano in the distance the low lava-forged coast of Punta Espinoza on Fernandina Island is a spectacular sight. Hundreds of marine iguanas rest on the black rock of recent lava flows absorbing heat from the stone and defending their territories against one another. Galapagos sea lions and their pups also take shelter here resting on the beach and playing in the shallow tide pools sprinkled along the coast. Walk past high sandy areas where marine iguanas lay their eggs and along low shallow mangrove ponds ringed with bright red Sally Lightfoot crabs and Flightless Cormorants drying their stubby wings in the sunshine.

Tagus Cove (Isabela)  
 Di., 8. April  
 Ankunft 12:00

Tag 4

Tagus Cove is bordered by a steep rocky coastline and has for centuries offered shelter for ships and yachts. The cove is named after the British frigate HMS Tagus visiting the Galapagos in 1814. Already by the 1830s other ships had their visits recorded by painting or scratching their name onto the rocks. On approach Galapagos Penguins and Flightless Cormorants –both birds mainly found on Isabela's west coast and neighboring Fernandina- are often seen. From the landing a trail through an incense tree forest leads past Darwin Lake to a viewpoint on top of a splatter cone. During the hike several land birds including Medium Ground-Finches, Galapagos Hawks, Yellow Warblers as well as Large-billed and Vermilion Flycatchers are often present. Brown Noddies and Blue-footed Boobies prefer the rocks along the shore.

Elizabeth Bay (Isabela)  
 Di., 8. April  
 Ankunft 12:00

Tag 4

Elizabeth Bay is one of the marine sites on Isabela's west coast. South of Alcedo Volcano and north of Sierra Negra, Elizabeth Bay is found at Isabela's narrowest east-west extension where the lava flows of these two volcanoes have connected each other. Elizabeth Bay's shores show mangroves and specifically the easternmost part, a cove which can only be entered via a narrow channel, has red, white and black mangroves. Different animals prefer different parts of Elizabeth Bay. Las Marielas, three rocks at the entrance to the bay, are favored by Blue-footed Boobies, Flightless Cormorants and Galapagos Penguins as a resting place, while the mangrove area is preferred by Great Blue Herons for hunting or the Magnificent Frigatebirds for perching. The bay is used by turtles, rays and even sharks for feeding or resting. The shallow water and the root system of the mangroves in the small inlet allow smaller fish to hide from bigger predators.

Post Office Bay (Floreana)  
 Mi., 9. April  
 Ankunft 12:00

Tag 5

Floreana's Post Office Bay has received its name as the site was used to leave mail for retrieval by others who were thought to stop at the Galapagos Islands or might be heading for the addressee's direction. First mentioned by Porter in 1813 as "Hathaway's Postoffice", HMS Beagle's captain FitzRoy stated that it was not in use in 1835 as the island was already settled at that time. Floreana had been the first island to be settled by Ecuadorians in 1832. Today a barrel instead of the original box is used by visitors who leave their own postcards and retrieve mail for hand-delivery. Apart from the beach and mail barrel the bay offers good swimming and snorkeling. The area holds remains of a failed Norwegian fish canning plant and settlement dating back to the 1920s. A lava tube in the vicinity can also be explored. Although Floreana is inhabited, the number of residents is reduced because of the difficult access to water. A track from Post Office Bay connects with the only road from Puerto Velazco Ibarra on the west coast to a spring in the highlands.

Champion Islet (Floreana)  
 Mi., 9. April  
 Ankunft 12:00

Tag 5

Champion Islet is a small islet some 700 meters off the northeast coast of Floreana. It is one of four marine sites surrounding Floreana and offers excellent deepwater snorkeling opportunities. Curious sea lions approach the snorkelers while turtles slowly swim by and sharks, sting rays, and a high diversity of colorful fishes can usually be seen. During a Zodiac cruise around Champion Islet not only seabirds such as Nazca Boobies, Swallow-tailed Gulls, or Red-billed Tropicbirds will be seen, it is also possible to spot the rare Floreana Mockingbird.

Punta Cormorant (Floreana)  
 Mi., 9. April  
 Ankunft 15:00

Tag 5

Floreana Island's northernmost point is called Punta Cormorant – named after the British naval vessel HMS Cormorant and dating back to the late 19th century. From the landing beach a short track leads to a shallow lagoon that is famous for its flamingos. The brilliantly pink birds skim the salty waters for shrimp and tend to chicks on the nest. The trail then scales a low hillside through scattered Palo Santo trees to reveal an idyllic white-sand beach on the other side of the point. Standing at the edge of the lapping waves you might spot mammoth female sea turtles hauling themselves out of the sea to lay eggs in the sugar sand dunes that lay high above the tide line. Before returning to the landing site your guides may also point out White-cheeked Pintails Blue-footed Boobies Yellow Warblers and Medium and Small Ground Finches.

Fausto Llerena Breeding Center, Puerto Ayora (Santa Cruz)  
 Do., 10. April  
 Ankunft 15:00

Tag 6

Silver Origin will anchor in front of Puerto Ayora Santa Cruz where the prestigious Charles Darwin Research Station is located. The station also houses the Fausto Llerena Breeding Center for giant tortoises and land iguanas where guides interpret the centre's captive breeding and reintroduction programs. In addition to these star species throughout the station, there are huge prickly pear cactus trees being fed upon by the pretty Galapagos Cactus Finch. To round out the stay in Puerto Ayora enjoy free time in town where local artists have created charming art galleries and corner cafés.

Santa Cruz Highlands  
 Do., 10. April  
 Ankunft 12:00

Tag 6

Los Gemelos (The Twins) is a visitor site in the Santa Cruz highlands. Found some 15 kilometers northwest of Puerto Ayora, the road leading from Puerto Ayora in the south of Santa Cruz to Itabaca in the north dissects the twin pit craters. Pit craters are formed when the roof of an underground void collapses. The smaller pit crater is on the eastern side of the road, while the larger one is on the western side. See from above, the two openings in the ground are not at all identical. Their layout might imply an elongated magma chamber or a lava tube leading further west and the larger twin actually having formerly been two small pit craters whose connecting wall collapsed as well. Trails through a Scalesia forest not only give access to good views of the pit craters, but also permit to observe some of the smaller land birds. Vermilion Flycatchers, Yellow Warblers, Galapagos Doves, Medium Ground Finches and several other finch species can often be seen there.

Cerro Dragon (Santa Cruz)  
 Fr., 11. April  
 Ankunft 12:00

Tag 7

Cerro Dragón's land iguanas once played an important part in a conservation program headed by the Charles Darwin Foundation and the Galapagos National Park. When the reptiles' numbers declined in the 1970s some animals were taken to breed in captivity and were released back into undeveloped areas. Today it is an honor to see the success of this program firsthand at Cerro Dragón. Walk inland on a trail past small saltwater lagoons that periodically feature flamingos to see the reintroduced animals. In a periodic local phenomenon during rainier times the salinity in the lagoons drops with the inflow of freshwater. As a consequence crustacean populations decline which in turn means the shorebirds become scarce.

Bahia Bowditch, Santa Cruz  
 Fr., 11. April  
 Ankunft 15:20

Tag 7

San Cristóbal, Galapagos  
 Sa., 12. April  
 Ankunft 06:30

Tag 8

Like so many of the islands in the Galapagos San Cristobal is formed by dormant volcanoes. It lies to the east of the archipelago and is one of the oldest islands in the group. Approximately 6 000 people live on the island making their living from tourism fishing in government offices or off the rich volcanic soils with some limited farming existing in the highlands. Puerto Baquerizo Moreno on the southwestern tip of the island is the capital city of the Galapagos Islands. A statue of Charles Darwin graces the harbor marking one of the first places he likely stepped ashore in the 1830s.

#### **Im Preis inbegriffen**

- 1 Hotelübernachtung vor der Kreuzfahrt und 1 Tageshotel nach der Kreuzfahrt, falls erforderlich
- Inlandsflüge wenn notwendig
- Geführte Zodiac-, Land- und Seetouren sowie Aktivitäten unter der Leitung des Expeditions-Teams
- Parka
- Fachkundige Lektoren und/oder Kreuzfahrtberater
- Geräumige Suiten
- Persönlicher Butler-Service für alle Suiten
- Unbegrenzt kostenloses WiFi
- Individueller Service – nahezu ein Crewmitglied pro Gast
- Auswahl an Restaurants, abwechslungsreiche Küche, freie Platzwahl
- Getränke in der Suite und auf dem gesamten Schiff – Champagner, auserlesene Weine und hochwertige Spirituosen
- Essen in der Suite und 24-Stunden Zimmerservice
- Gehobene Unterhaltung an Bord
- Sämtliche Trinkgelder an Bord

#### **Nicht im Preis inbegriffen**

- internationale Flüge (können auf Wunsch hinzugebucht werden)
- Transfers
- Reiseversicherungen
- Visa- oder Passgebühren (falls erforderlich)
- persönliche Ausgaben (Einkäufe, optionale Ausflüge)
- sonstige im Programm nicht genannte Leistungen

## Ihr Schiff

Ihr Schiff ist die "Silver Origin". Ausführlich stellen wir Ihnen dieses Schiff auf unseren Schiffseiten vor. [Ausführliche Informationen zu diesem Schiff.](#)

Passagiere  
**100**

Bordsprachen  


Special  
**All-Inclusive**

Restaurants  
**2**

