

IHRE REISE

Antarktis mit Falklandinseln und Südgeorgien

Reisetermin

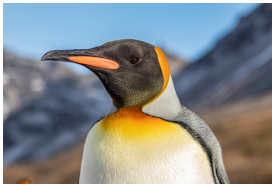
05.11.2025 - 23.11.2025

Reisedauer

19 Tage

Reederei / Schiff

Silver Wind / Silversea



Vista Suite



Doppelbelegung



€17.050

pro Person

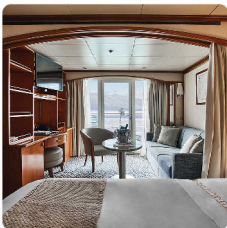
Einzelbelegung



€25.575

pro Person

Classic Veranda Suite



Doppelbelegung



€19.750

pro Person

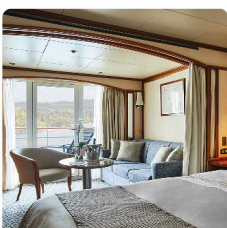
Einzelbelegung



€29.625

pro Person

Deluxe Veranda Suite



Doppelbelegung



€23.450

pro Person

Einzelbelegung



€35.175

pro Person

Medallion Suite



Doppelbelegung


€35.750
 pro Person

Einzelbelegung


€71.500
 pro Person

Silver Suite



Doppelbelegung


€48.250
 pro Person

Einzelbelegung


€96.500
 pro Person

Royal Suite



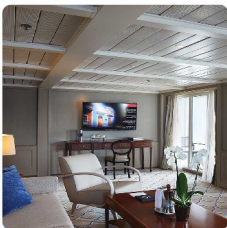
Doppelbelegung


 Nicht verfügbar

Einzelbelegung


 Nicht verfügbar

Grand Suite



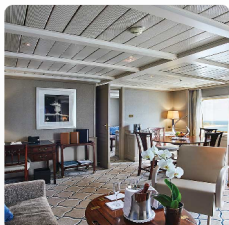
Doppelbelegung


 Nicht verfügbar

Einzelbelegung


 Nicht verfügbar

Owner's Suite



Doppelbelegung

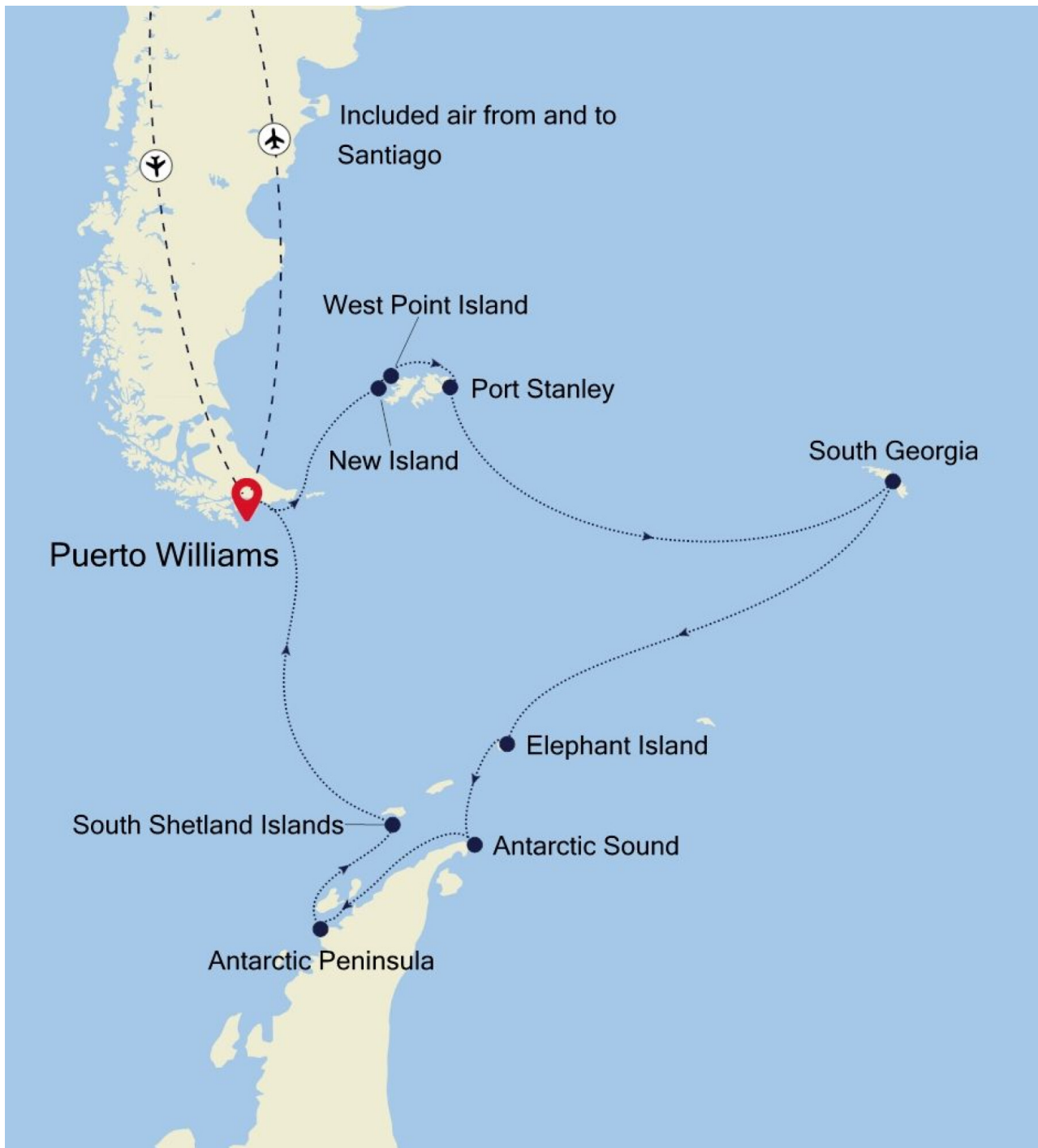


Nicht verfügbar

Einzelbelegung



Nicht verfügbar



Puerto Williams
Mi., 5. November
Abfahrt 21:00

Tag 1

Puerto Williams is a Chilean city located on Navarino Island on the southern shores of the Beagle Channel. It claims to be the "southernmost city in the world", however owing to its small size – 2500 residents approximately – the much larger Argentinean city of Ushuaia, which sits on the northern side of the same channel, also claims that title. The surrounding scenery is magnificent. The wild windswept mountains rise above the tree line and are regularly dusted with snow. The city itself has the dramatic backdrop called "Dientes de Navarino" (literally "teeth of Navarino"), which rival the famous Torres del Paine further to the north. The area was originally used by the Yaghan people, hunter-gatherers who despite enduring the harsh regional climate, could not weather the arrival of Europeans. The current city was established as a naval base in 1953 and honours the British-Chilean naval commander John Williams Wilson of the 16th century. Initially it served to protect territorial possessions and fishing rights of the area, as well as offering logistical support to Antarctic bases. More recently it has become a departure point for scientific and tourism trips to the Antarctic region. In contrast to the bustle and traffic of a very commercial Ushuaia, Puerto Williams offers a quieter, more relaxed experience. It charms the visitor with a small village feel, complete with rustic buildings and the homely smell of drifting wood smoke. A haven of peace at the end of the world.

Day at sea
Do., 6. November
Abfahrt 21:00

Tag 2

Days at sea are the perfect opportunity to relax unwind and catch up with what you've been meaning to do. So whether that is going to the gym, visiting the spa, whale watching, catching up on your reading or simply topping up your tan these blue sea days are the perfect balance to busy days spent exploring shore side.

New Island
Fr., 7. November
Ankunft 06:00

Tag 3

Remote and raw New Island lies to the west of the Falkland Islands and the humble human population here is far outweighed by the extraordinary birdlife that resides along its craggy coastline. Out in the tempestuous wilds of the South Atlantic Ocean the island is a sanctuary of animal life - with crowds of rockhopper penguins wrinkled seals and stern-looking albatross among its many residents. The penguins of the Falklands are a sight to see fooling and falling on the beaches before diving in and whipping through the waters. Home to five different species including king penguins - who strut with their orange collars glowing against the pure white feathers of their chests. Sea lions seals and elephant seals bark and lumber along the shoreline while sleek orcas patrol and Peale's dolphins cut through the waves. Settlement Rookery's cliffs rattle with the sounds of crashing sea waves and the echoing shouts of hollering black-browed albatross king cormorants and rockhopper penguins. Enjoy gorgeous sweeping landscapes littered with shipwrecks and sprinkles of colourful wildflowers. A warm welcome is guaranteed especially when the local custom of smoko is served up – towering platters of cakes and biscuits with tea and coffee. Things haven't always been so peaceful here however and you can pay a visit to the battlefields and memorials of the costly war in 1982 when the British and Argentinians clashed fiercely over these islands.

West Point Island
Fr., 7. November
Ankunft 14:15

Tag 3

A north-westerly outpost of the scenic Falkland Islands you'll be welcomed ashore by the calls and cries of black-browed albatross. Indeed the island was originally known as Albatross Island before being renamed to reflect its geographic location. While the albatrosses - that flash white feathers in the rugged cliffs above the waves - are the most well known residents they are far from the only animal inhabitants of this remote isolated land. A huge army of birdlife calls the island sanctuary home overwhelming the tiny human population and sheep that roam West Point Island's grasses. Meet the Rockhopper Penguins who scamper and burrow along the coast's boulders as well as the imperial cormorants who rest here in great numbers. You're also likely to encounter Magellanic penguins during your explorations. Hike the island's quiet landscapes and look out for endemic plants like Felton's flower the green interior. Decorated with some of the archipelago's most dramatic scenery explore this wind-lashed distant land of soaring cliffs and towering coastal precipices. Cliff Mountain is the island's standout - a towering sandstone monolith and the archipelago's highest cliff falling away to swirling waves below. Look out to the waters to spot Commerson's dolphin chasing each other around the island's wave-washed footprint. Whales also visit as well as the fur seals who you may spot lounging around West Point Island's inviting shores.

Port Stanley
Sa., 8. November
Ankunft 08:00

Tag 4

Despite it being a stalwart of Britishness, Stanley more resembles Patagonia than Portsmouth. But, despite the windswept, vast and achingly beautiful landscape of the Falkland Islands, don't be too surprised to find the odd pub serving ales and even fish'n'chips. While landmarks such as Christ Church Cathedral, with its whalebone arch are 100% local, there is also good smattering of imported garden gnomes and Union Jacks to remind you whose territory you are really on. The Falkland Islands' ownership has long been a matter of controversy, ever since colonisation in the 18th century. At various points in their life they have been considered French, British, Spanish and Argentine. The Falklands War in 1982, despite only lasting for a short while, proved that the Brits clung to this remote outpost and the islands remain part of the British Commonwealth today. Margaret Thatcher, under whom the war was masterminded, remains something of a local hero as can be seen in the street signs (such as Thatcher Drive). For those who want to dig deeper into the past, the Historic Docklands Museum provides lots of information on the chequered historical and political background of the Falklands. However, the true heroes of Stanley are of course the thousands and thousands of penguins. Five species nest here during mating season (including the rare rockhopper penguin). There are virtually no barriers between you and the wildlife; allowing for a truly interactive, authentic and totally unforgettable experience.

Day at sea
So., 9. November
Ankunft 08:00

Tag 5

Days at sea are the perfect opportunity to relax unwind and catch up with what you've been meaning to do. So whether that is going to the gym, visiting the spa, whale watching, catching up on your reading or simply topping up your tan these blue sea days are the perfect balance to busy days spent exploring shore side.

Day at sea
Mo., 10. November
Ankunft 08:00

Tag 6

Days at sea are the perfect opportunity to relax unwind and catch up with what you've been meaning to do. So whether that is going to the gym, visiting the spa, whale watching, catching up on your reading or simply topping up your tan these blue sea days are the perfect balance to busy days spent exploring shore side.

South Georgia
Di., 11. November
Ankunft 09:30

Tag 7

Charcoal-black mountains ladled with snow giant glaciers and thriving wildlife combine to make South Georgia one of the great natural islands. Adventure to these far flung lands - where the animals are in charge and humans come a distant second. Here you'll witness a cacophony of calling birds, natural set pieces like elephant seals clashing and thrashing and crowds of colourful king penguins stretching out as far as the eye can see. An overseas territory of the UK, these isolated subantarctic islands once formed a remote whaling centre - and you can still visit the former whaling stations. Nowadays the giants of the sea are free to cruise the icy waters uninhibited. Written into explorer history due to its links with Ernest Shackleton's tale of Antarctic exploration, shipwreck and survival, the Endurance's crew were saved when he reached the salvation of these shores in 1916 - before returning to collect the remaining sailors from Elephant Island. A museum commemorates the legendary mission and you can see the memorial to Shackleton that stands over his final resting place on this fabled island. South Georgia's colonies of King Penguins - with vivid bursts of yellow and orange around their necks - stand squabble, and curiously investigate, enjoying the isolated respite of this island. They're joined by smaller penguin species like Macaroni penguins and other glorious birdlife like the majestic wandering albatrosses which you can see gliding on gusts of wind over the choppy waves.

South Georgia
Mi., 12. November
Abfahrt 20:00

Tag 8

Charcoal-black mountains ladled with snow giant glaciers and thriving wildlife combine to make South Georgia one of the great natural islands. Adventure to these far flung lands - where the animals are in charge and humans come a distant second. Here you'll witness a cacophony of calling birds, natural set pieces like elephant seals clashing and thrashing and crowds of colourful king penguins stretching out as far as the eye can see. An overseas territory of the UK, these isolated subantarctic islands once formed a remote whaling centre - and you can still visit the former whaling stations. Nowadays the giants of the sea are free to cruise the icy waters uninhibited. Written into explorer history due to its links with Ernest Shackleton's tale of Antarctic exploration, shipwreck and survival, the Endurance's crew were saved when he reached the salvation of these shores in 1916 - before returning to collect the remaining sailors from Elephant Island. A museum commemorates the legendary mission and you can see the memorial to Shackleton that stands over his final resting place on this fabled island. South Georgia's colonies of King Penguins - with vivid bursts of yellow and orange around their necks - stand squabble, and curiously investigate, enjoying the isolated respite of this island. They're joined by smaller penguin species like Macaroni penguins and other glorious birdlife like the majestic wandering albatrosses which you can see gliding on gusts of wind over the choppy waves.

South Georgia
Do., 13. November
Abfahrt 19:00

Tag 9

Charcoal-black mountains ladled with snow giant glaciers and thriving wildlife combine to make South Georgia one of the great natural islands. Adventure to these far flung lands - where the animals are in charge and humans come a distant second. Here you'll witness a cacophony of calling birds, natural set pieces like elephant seals clashing and thrashing and crowds of colourful king penguins stretching out as far as the eye can see. An overseas territory of the UK, these isolated subantarctic islands once formed a remote whaling centre - and you can still visit the former whaling stations. Nowadays the giants of the sea are free to cruise the icy waters uninhibited. Written into explorer history due to its links with Ernest Shackleton's tale of Antarctic exploration, shipwreck and survival, the Endurance's crew were saved when he reached the salvation of these shores in 1916 - before returning to collect the remaining sailors from Elephant Island. A museum commemorates the legendary mission and you can see the memorial to Shackleton that stands over his final resting place on this fabled island. South Georgia's colonies of King Penguins - with vivid bursts of yellow and orange around their necks - stand squabble, and curiously investigate, enjoying the isolated respite of this island. They're joined by smaller penguin species like Macaroni penguins and other glorious birdlife like the majestic wandering albatrosses which you can see gliding on gusts of wind over the choppy waves.

Day at sea
Fr., 14. November
Abfahrt 19:00

Tag 10

Days at sea are the perfect opportunity to relax unwind and catch up with what you've been meaning to do. So whether that is going to the gym, visiting the spa, whale watching, catching up on your reading or simply topping up your tan these blue sea days are the perfect balance to busy days spent exploring shore side.

Day at sea
Sa., 15. November
Abfahrt 19:00

Tag 11

Days at sea are the perfect opportunity to relax unwind and catch up with what you've been meaning to do. So whether that is going to the gym, visiting the spa, whale watching, catching up on your reading or simply topping up your tan these blue sea days are the perfect balance to busy days spent exploring shore side.

Elephant Island
So., 16. November
Ankunft 09:30

Tag 12

Promising thrilling adventure legendary tales and immaculate Antarctic beauty, Elephant Island is perhaps Antarctica's best-known location. The exploits of its early explorers have immortalised this harsh monochrome island in the tomes of human history. Believed to take its name from the elephant seals that early explorers spotted lolling on its rocks, the volcanic island was not properly explored until 1916 - when Ernest Shackleton and his men were stricken by ice and sought salvation on its shores. Elephant Island is written deep into the legend of Antarctic exploration and you'll discover Shackleton's tale for yourself as you arrive in the island's icy realm. The remarkable slowly flowing Endurance Glacier takes its name from their ship The Endurance. You might visit the monument that stands to Shackleton often surrounded by a migrating crowd of tiny Gentoo penguins at Point Wild - the spot where he and his 28 crew members camped for four and a half months of Antarctic winter. Eventually Shackleton and a handful of courageous others sailed for South Georgia Island before returning to secure the rescue of the remaining crew members. Aside from sailing amid breathtaking winter vistas witnessing incredible fauna and feeling the sheer rush of an adventure to the unknown - one of the true joys of any Antarctic cruise is to follow in the footsteps of the brave explorers who first sought out the alluring nectar of these dangerous evocative landscapes.

Antarctic Sound
Mo., 17. November
Ankunft 09:30

Tag 13

Few voyages ignite the imagination like a journey down to one of the planet's most remote extreme and enchanting wilderness Antarctica. An adventure in its purest form only a handful of people will ever be lucky enough to experience the majestic beauty of these monochrome landscapes first-hand. The Antarctic Sound will be one of your first encounters of this whitewash kingdom located at the northerly tip of the Antarctic Peninsula - which sprawls up like a tentacle towards Tierra del Fuego, South America's most southerly point, otherwise known as the 'End of the World'. Taking its name from the first ship to brave the passageway between the peninsula and the Joinville Island groups back in 1902, the Sound is a raw sensory assault of imposing iceberg slabs broken away from the disintegrating Larsen Ice Shelf. Come face-to-face with stadium-sized islands of ice and meet the extraordinary birdlife that call this whitewash kingdom home. Watch on as colonies of Gentoo penguins hop around and cape petrels sweep overhead as the continent's unique wildlife thrives around you. If you're planning your first venture into Antarctica you'll want to brush up on your photography skills in advance to capture this unforgiving continent in all of its unrestrained glory.

Antarctic Peninsula
Di., 18. November
Ankunft 09:30

Tag 14

The Antarctic Peninsula unravels upwards towards South America reaching out a beckoning finger to the adventurous who dare to explore this untamed realm. Stretching up from the heart of the world's southernmost continent the Antarctic Peninsula lies a mere 620 mile from Tierra del Fuego and for many offers a spectacular first taste of the snow-blanketed landscapes and colossal ice sculptures which make up Earth's least-explored continent. Unseen by humans until 1820 - a blink of an eye ago in relative terms - this is an adventure sure to make your hairs stand on end as you experience the thrill of the truly unknown and extraordinary. The vast peninsula is sprinkled with research bases which are at the frontline of human scientific endeavour pushing to study and understand this unique landscape, its exceptional wildlife and the impact that humans are having on this pristine continent. Witness cathedral-sized icebergs up close and blue-hued glaciers slowly slipping from imposing locations.

Antarctic Peninsula
Mi., 19. November
Ankunft 09:30

Tag 15

The Antarctic Peninsula unravels upwards towards South America reaching out a beckoning finger to the adventurous who dare to explore this untamed realm. Stretching up from the heart of the world's southernmost continent the Antarctic Peninsula lies a mere 620 mile from Tierra del Fuego and for many offers a spectacular first taste of the snow-blanketed landscapes and colossal ice sculptures which make up Earth's least-explored continent. Unseen by humans until 1820 - a blink of an eye ago in relative terms - this is an adventure sure to make your hairs stand on end as you experience the thrill of the truly unknown and extraordinary. The vast peninsula is sprinkled with research bases which are at the frontline of human scientific endeavour pushing to study and understand this unique landscape, its exceptional wildlife and the impact that humans are having on this pristine continent. Witness cathedral-sized icebergs up close and blue-hued glaciers slowly slipping from imposing locations.

South Shetland Islands

Do., 20. November

Ankunft 19:30

Tag 16

The ice-coated Antarctic Peninsula forms perhaps the most accessible region of mainland Antarctica lying a mere 480-miles away from South America across the fabled waters of Drakes Passage. Lying close to the northwestern tip of the Antarctic Peninsula separated by the Bransfield Strait, the South Shetland Islands fall under the jurisdiction of the Antarctic Treaty, suspending claims on their sovereignty. Several countries maintain research bases here and with plump elephant seals and crowds of Gentoo, Chinstrap, and Adelie Penguins also calling the islands home it can even feel a little crowded at times. King George Island is the largest and most hospitable island hosting the majority of the research stations - some of which are populated all-year-round by tiny hardy crews. Don't be fooled though these islands offer extraordinary adventure in one of the most remote locations on earth. The triple peaks of Mount Foster tower above the archipelago. Hike the luna landscapes within and even dip into the improbably warm geothermally-heated waters of Pendulum Cove. Elephant Island meanwhile is written deep into the annals of Antarctic expedition legend as the site where Ernest Shackleton and the stricken crew of the Endurance miraculously survived a harsh Antarctic winter in 1916.

Drake Passage

Fr., 21. November

Ankunft 19:30

Tag 17

Sailing the legendary Drake Passage is an experience that few are ever lucky enough to experience. The southern tip of the Americas already feels like a wild enough environment – but the sensation of watching the distant cliffs of the peninsular known as the 'End of the World' fade into the horizon, is one that's equal parts epic, eerie and magical. Set sail, to slowly drop off the bottom of the map from Cape Horn, and voyage on an expedition down into the icy underworld of Antarctica. Drake Passage is an extraordinary voyage of romantic ocean faring legend, as you aim for Antarctica's icy realm. On arrival, skyscraper sized icebergs salute you, as you traverse the waters of this continent where snow and ice dwelling creatures like penguins and whales roam undisturbed. Your first sight of this most-unexplored place will most likely be the South Shetland Islands. Walk in the footsteps of some of history's greatest and bravest explorers as you explore famed, snow-covered landmasses like Elephant and Deception Island. If the journey across Drake Passage sounds daunting, don't worry – even in rough seas you're never alone, and will often be accompanied on this spine-tingling adventure by soaring albatrosses and maybe even a protective pod of humpbacks and hourglass dolphins or two. Converging warm and cool ocean currents attract some spectacular animal life to the passage.

Puerto Williams

Sa., 22. November

Ankunft 22:00

Tag 18

Puerto Williams is a Chilean city located on Navarino Island on the southern shores of the Beagle Channel. It claims to be the "southernmost city in the world", however owing to its small size – 2500 residents approximately – the much larger Argentinean city of Ushuaia, which sits on the northern side of the same channel, also claims that title. The surrounding scenery is magnificent. The wild windswept mountains rise above the tree line and are regularly dusted with snow. The city itself has the dramatic backdrop called "Dientes de Navarino" (literally "teeth of Navarino"), which rival the famous Torres del Paine further to the north. The area was originally used by the Yaghan people, hunter-gatherers who despite enduring the harsh regional climate, could not weather the arrival of Europeans. The current city was established as a naval base in 1953 and honours the British-Chilean naval commander John Williams Wilson of the 16th century. Initially it served to protect territorial possessions and fishing rights of the area, as well as offering logistical support to Antarctic bases. More recently it has become a departure point for scientific and tourism trips to the Antarctic region. In contrast to the bustle and traffic of a very commercial Ushuaia, Puerto Williams offers a quieter, more relaxed experience. It charms the visitor with a small village feel, complete with rustic buildings and the homely smell of drifting wood smoke. A haven of peace at the end of the world.

Puerto Williams
So., 23. November
Ankunft 22:00

Tag 19

Puerto Williams is a Chilean city located on Navarino Island on the southern shores of the Beagle Channel. It claims to be the “southernmost city in the world”, however owing to its small size – 2500 residents approximately – the much larger Argentinean city of Ushuaia, which sits on the northern side of the same channel, also claims that title. The surrounding scenery is magnificent. The wild windswept mountains rise above the tree line and are regularly dusted with snow. The city itself has the dramatic backdrop called “Dientes de Navarino” (literally “teeth of Navarino”), which rival the famous Torres del Paine further to the north. The area was originally used by the Yaghan people, hunter-gatherers who despite enduring the harsh regional climate, could not weather the arrival of Europeans. The current city was established as a naval base in 1953 and honours the British-Chilean naval commander John Williams Wilson of the 16th century. Initially it served to protect territorial possessions and fishing rights of the area, as well as offering logistical support to Antarctic bases. More recently it has become a departure point for scientific and tourism trips to the Antarctic region. In contrast to the bustle and traffic of a very commercial Ushuaia, Puerto Williams offers a quieter, more relaxed experience. It charms the visitor with a small village feel, complete with rustic buildings and the homely smell of drifting wood smoke. A haven of peace at the end of the world.

Im Preis inbegriffen

- 1 Hotelübernachtung vor der Kreuzfahrt und 1 Tageshotel nach der Kreuzfahrt, falls erforderlich
- Inlandsflüge wenn notwendig
- Geführte Zodiac-, Land- und Seetouren sowie Aktivitäten unter der Leitung des Expeditions-Teams
- Parka
- Fachkundige Lektoren und/oder Kreuzfahrtberater
- Geräumige Suiten
- Persönlicher Butler-Service für alle Suiten
- Unbegrenzt kostenloses WiFi
- Individueller Service – nahezu ein Crewmitglied pro Gast
- Auswahl an Restaurants, abwechslungsreiche Küche, freie Platzwahl
- Getränke in der Suite und auf dem gesamten Schiff – Champagner, auserlesene Weine und hochwertige Spirituosen
- Essen in der Suite und 24-Stunden Zimmerservice
- Gehobene Unterhaltung an Bord
- Sämtliche Trinkgelder an Bord

Nicht im Preis inbegriffen

- internationale Flüge (können auf Wunsch hinzugebucht werden)
- Transfers
- Reiseversicherungen
- Visa- oder Passgebühren (falls erforderlich)
- persönliche Ausgaben (Einkäufe, optionale Ausflüge)
- sonstige im Programm nicht genannte Leistungen

Ihr Schiff

Ihr Schiff ist die "Silver Wind". Ausführlich stellen wir Ihnen dieses Schiff auf unseren Schiffseiten vor. [Ausführliche Informationen](#) zu diesem Schiff.

Passagiere

254

Bordsprachen



Eisklasse

1C

Special

All-Inclusive

