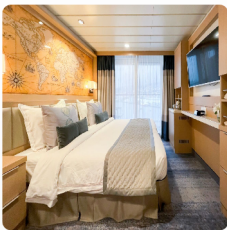


IHRE REISE

Reiseterrin 05.08.2027 - 15.08.2027	Reisedauer 11 Tage	Reederei / Schiff Ocean Explorer / Quark Expeditions
---	------------------------------	--

Deluxe Veranda Forward Kabine



Doppelbelegung


€ 11.666
 pro Person

Doppelbelegung


€ 12.281
 pro Person

Einzelbelegung


€ 20.402
 pro Person

Einzelbelegung


€ 21.476
 pro Person

Veranda Kabine



Doppelbelegung


€ 12.265
 pro Person

Doppelbelegung


€ 12.911
 pro Person

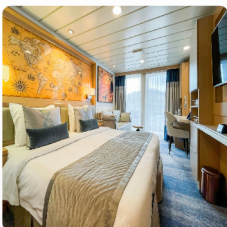
Einzelbelegung


€ 21.419
 pro Person

Einzelbelegung


€ 22.547
 pro Person

Veranda Suite



Doppelbelegung


€ 13.034
 pro Person

Doppelbelegung


€ 13.721
 pro Person


Einzelbelegung






€ 22.728
 pro Person

Einzelbelegung


€ 23.924
 pro Person

Junior Suite



<p><i>Doppelbelegung</i></p> <p></p> <p>€ 15.514</p> <p>pro Person</p>	<p><i>Doppelbelegung</i></p> <p></p> <p>€ 16.331</p> <p>pro Person</p>	<p><i>Einzelbelegung</i></p> <p></p> <p>€ 31.840</p> <p>pro Person</p>	<p><i>Einzelbelegung</i></p> <p></p> <p>€ 33.516</p> <p>pro Person</p>
--	--	--	--

Studio Single



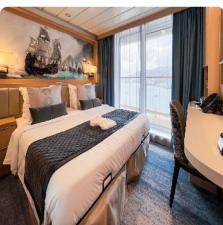
<p><i>Einzelbelegung</i></p> <p></p> <p>€ 15.514</p> <p>pro Person</p>	<p><i>Einzelbelegung</i></p> <p></p> <p>€ 16.331</p> <p>pro Person</p>
--	--





Studio Veranda Single



<p><i>Einzelbelegung</i></p> <p></p> <p>€ 16.796</p> <p>pro Person</p>	<p><i>Einzelbelegung</i></p> <p></p> <p>€ 17.681</p> <p>pro Person</p>
--	--

Penthouse Suite



<p><i>Doppelbelegung</i></p> <p></p> <p>€ 18.164</p> <p>pro Person</p>	<p><i>Doppelbelegung</i></p> <p></p> <p>€ 19.121</p> <p>pro Person</p>	<p><i>Einzelbelegung</i></p> <p></p> <p>€ 37.141</p> <p>pro Person</p>	<p><i>Einzelbelegung</i></p> <p></p> <p>€ 39.096</p> <p>pro Person</p>
--	--	--	--

Owners Suite



Doppelbelegung



€ 19.447

pro Person

Doppelbelegung



€ 20.471

pro Person

Einzelbelegung



€ 39.706

pro Person

Einzelbelegung



€ 41.796

pro Person



Reykjavík, Iceland

ARRIVE IN REYKJAVIK, ICELAND

Day 1

Arrive in the Icelandic capital and make your way to your included hotel. You will have the rest of the day to explore this fascinating city, known for its Norse history, and stunning architecture.

Cruising

EMBARK

Day 2

This afternoon, you'll board your vessel and begin your expedition. Get ready for a great adventure ahead.

Cruising

SAILING NORTHBOUND TO GREENLAND

Day 3

As we cruise north across the Denmark Strait, with views of Greenland in the distance, your Expedition Team will prepare you for the adventures that await. Learn about the storied history and politics of the Arctic, its fascinating wildlife, geology, ecology and climate, and the incredible sights you will soon explore. The team will also search for the seabirds soaring around your ship, as well as the whales that frequent the waters here.

Cruising

EXPLORING NORTHEAST GREENLAND

Days 4 to 8

Experience the wonders of nature in Segelseskäbets Fjord, where a spectacular display of "geological art" awaits your landing: alternating layers of limestone and dolomite stretching before you in a stunningly beautiful canvas created over tens of thousands of years. In the afternoon, cruise the natural beauty of Alpefjord and pass by the impressive Selströms Glacier. During your tour of Greenland's remote northeast coast, you'll enjoy Zodiac cruises and shore visits to several locations. We'll also keep an eye out for grazing muskoxen, as 40 percent of the world's population lives in Northeast Greenland National Park. At the entrance of the sound is East Greenland's most northerly community, Ittoqqortoormiit, where you may spend time interacting with the Inuit people and learning about their way of life. Magnificent vistas also await at Kong Oscar Fjord, with possible landings at Ella Ø, renowned for its rugged cliffs and ice-choked waters, and flower-rich Botanikerbugt, on Ymer Ø.

Cruising

SAILING SOUTHBOUND ACROSS THE DENMARK STRAIT

Days 9 and 10

As your Arctic adventure winds down, take in a presentation by our onboard experts, share your photos, sip an icy cocktail in the bar or spend time on the outer decks watching for wildlife—there are many activities during your time at sea. Your Expedition Team will also be on hand to answer any questions and point out wildlife.

Reykjavík, Iceland

DISEMBARK AT REYKJAVIK, ICELAND

Day 11

You'll disembark in Reykjavik, Iceland's capital, at the end of your journey. If you have booked post-expedition accommodation, we provide a transfer to a central downtown location.

Im Preis inbegriffen

Nicht im Preis inbegriffen

Ihr Schiff

Ihr Schiff ist die "Ocean Explorer". Ausführlich stellen wir Ihnen dieses Schiff auf unseren Schiffseiten vor. [Ausführliche Informationen zu diesem Schiff.](#)

Passagiere
138

Bordsprachen


Eisklasse
PC-6

Special
X-Bow

