


IHRE REISE

<i>Reisetermin</i> 17.02.2028 - 25.02.2028	<i>Reisedauer</i> 9 Tage	<i>Reederei / Schiff</i> MS Santa Cruz II / HX Expeditions
--	------------------------------------	--


Explorer Kabine Horizon Deck



Doppelbelegung


€7.246
 pro Person

Einzelbelegung


€10.854
 pro Person

Explorer Kabine Expedition Deck



Doppelbelegung


€7.751
 pro Person

Einzelbelegung


€11.612
 pro Person

Explorer Familienkabine Horizon Deck



Doppelbelegung


€8.256
 pro Person

Einzelbelegung


€12.369
 pro Person

Explorer Kabine Panorama Deck



Doppelbelegung


€ 8.256
 pro Person

Einzelbelegung


€ 12.369
 pro Person

Darwin Suite



Doppelbelegung


€ 10.421
 pro Person

Einzelbelegung


€ 20.812
 pro Person

Voyager Einzelkabine Horizon Deck

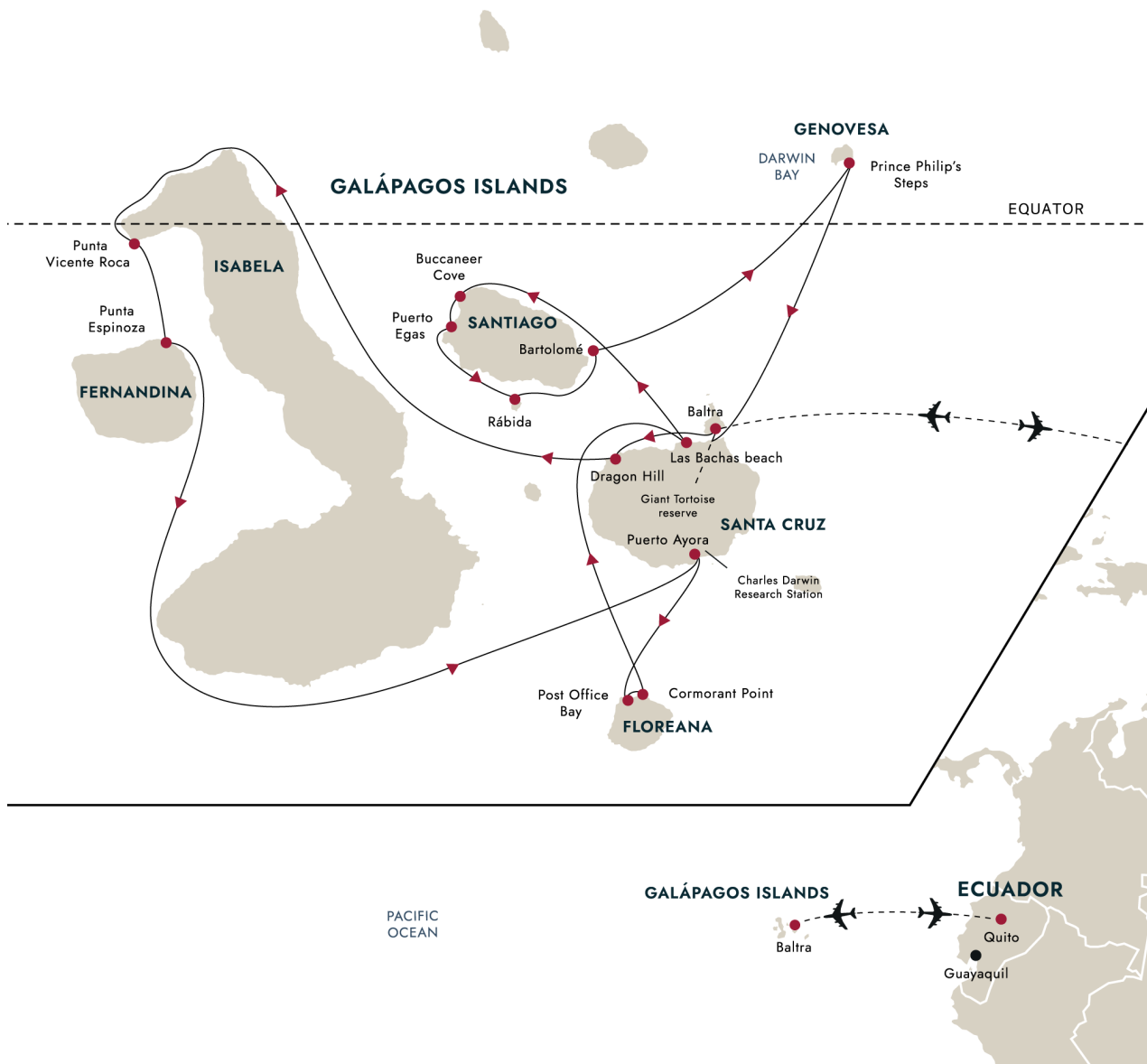


Doppelbelegung


 Nicht verfügbar

Einzelbelegung


 Nicht verfügbar



VIBRANT QUITO

Begin your adventure in the vibrant city of Quito

17. Feb 28 -
 Vibrant Quito

Your journey begins on the Equator in the lush Andean foothills. At 9,350 feet, Quito is the second-highest capital city in the world, and its main draw is the exquisite Old Town which was founded on an ancient Inca settlement. A UNESCO World Heritage site, it's packed with well-preserved colonial architecture as evidenced in colourful plazas, magnificent churches and handsome monuments. Settle into your hotel, then head out to explore.

Settle into your hotel and enjoy an overnight stay.

If you have time, why not come a few days earlier and join our pre-voyage option.

VISIT HISTORIC QUITO

Straddle the Equator at the Middle of the World City

18. Feb 28 -
Visit historic
Quito

Today you'll enjoy a guided tour of Quito's remarkable Old Town – one of the largest and best-preserved colonial-era quarters in South America. Wander through cobblestone streets as you admire the architecture – and sample some delicious chocolate made from finest Ecuadorian cacao along the way.

Next, you'll head to the iconic 'Middle of the World City', located around 16 miles north of Quito. After lunch, you'll visit the famous monument that delineates the imaginary line of the Equator. Have your camera ready to capture the moment you stand with one foot in each hemisphere.

YOUR CRUISE BEGINS

Get ready to explore the spectacular Galápagos Islands

19. Feb 28 -
Your cruise
begins

As your South America land adventure draws to a close, it's time to embark on the next stage of your journey. After breakfast, a short flight will take you to Baltra Island in the spectacular Galápagos archipelago. A transfer brings you straight to the port where your comfortable expedition ship MS Santa Cruz II awaits.

In the afternoon we'll begin our exploration of the Galápagos Islands following the north shore of Santa Cruz towards the fascinating landscapes of Cerro Dragón – Dragon Hill – where we'll land. The first part of the walk here passes by a brackish lagoon that's frequented by shorebirds and American Flamingos. Further inland, the trail offers a beautiful view of the bay and the western islands of the archipelago, as well as a chance to get a first look at some land iguanas.

WILDLIFE-RICH ISABELA AND FERNANDINA

Scan the coastline and seas for iconic species

20. Feb 28 -
Wildlife-rich
Isabela and
Fernandina

You'll start your day at Punta Vicente Roca, on the north-western tip of Isabela Island. After breakfast, we'll explore the coast by panga boat, learning about the dramatic geology of the area from your naturalist guides.

This site is a nesting place for several bird species, so look out for Flightless Cormorants, Galapagos Penguins, and boobies. Weather permitting, you'll get to snorkel alongside the cliffs, where you might find green sea turtles, oceanic sun fish, and fur seals.

In the afternoon, we'll explore Fernandina, an island with a unique ecology and a big population of marine iguanas. Scan the coast for sea lions, Sally Lightfoot crabs, hawks and penguins.

DARWIN'S SANTA CRUZ

Meet the famous giant tortoises of Galápagos

21. Feb 28 -
Darwin's Santa
Cruz

Today, you'll explore Santa Cruz Island. In the morning, we'll disembark at Puerto Ayora to visit the Charles Darwin Research Station.

A giant tortoise breeding centre, here you can see recently hatched tortoises and Darwin's famous finches – the birds he used as a basis for his theory of evolution by natural selection. There's also an impressive forest of prickly pear cacti that's home to many land birds.

Enjoy a cooler climate over lunch in the lush highlands, where giant tortoises shuffle about munching on grass and wallowing in pools.

You'll have time for another activity, including mountain biking or visiting a sugar plantation.

PICTURESQUE FLOREANA

Discover Galápagos history and underwater wildlife

22. Feb 28 -
Picturesque
Floreana

After breakfast, you'll enjoy a panga boat ride among the channels on Floreana's north shore, before taking in the incredible views of the island from Baroness Cove. Later on, we'll land at Post Office Bay to visit the historic barrel that has served as a post office in the archipelago for over two centuries.

After lunch, you'll explore the wonders around Champion Islet in a panga boat or aboard our glass-bottom boat. Here, you can snorkel in one of the best spots in the archipelago.

From there, it's onwards to Cormorant Point, where we'll take a walk from an olivine-crystal beach to a brackish lagoon, where you can commonly see American Flamingos, Pintail Ducks and more.

RELAX IN BALTRA

Unwind and recharge your batteries

23. Feb 28 -
 Relax in
 Baltra

Relax on board while we anchor off Baltra Island. After four days of exploring the unique nature and environments of Galápagos, it is the moment to pause for a while and recharge your batteries for the days ahead. Make use of the many onboard facilities, flick through the books in the library or exercise in the gym – it's up to you.

In the afternoon, we'll land at Las Bachas beach, located on the northern shore of Santa Cruz Island. This glorious white beach with turquoise waters is a great place to spot iconic Galápagos wildlife like flamingos and sea turtles. Enjoy swimming or snorkelling before heading back to the ship for an expedition briefing about the following day.

PRISTINE SANTIAGO ISLAND

See iconic wildlife and spectacular landscapes

24. Feb 28 -
 Pristine
 Santiago
 Island

Today you'll explore Santiago Island's pristine beaches and picturesque landscapes. Take in the impressive cliffs of Buccaneer Cove on the northwest coast, home to a large number of marine birds and sea lions. Immerse yourself in the scenery through a range of water activities and marvel at fantastic rock formations such as 'Elephant Rock' and 'The Bishop.'

In the afternoon, we'll head to Puerto Egas, one of the best visitor sites on the island. You'll have the opportunity to see a colony of Galápagos fur seals and exotic birdlife on an excursion. Or you could just swim or snorkel along the rocky shorelines, typically, in the company of marine turtles.

STUNNING RÁBIDA & BARTOLOMÉ

Soak up the sights and sounds of the Galápagos

25. Feb 28 -
 Stunning
 Rábida &
 Bartolomé

Your day starts on tiny Rábida Island, located off the southern shore of Santiago. You can go for a thrilling panga ride along the coast explore the island's mesmerising, red-coloured beach. Soak up the sights and sounds made by a colony of sea lions, and watch for marine iguanas, mockingbirds, Yellow Warblers and several species of Darwin's Finches.

In the afternoon, we'll sail to the golden sands of Bartolomé Island, dominated by the imposing Pinnacle Rock. You can swim or snorkel off the beach here, discover colourful marine life from our glass-bottom boat, or watch for Galápagos Penguins on the shore. Hike up to the summit of the island for fantastic views.

GENOVESA, A BIRD PARADISE

Discover a birdlife haven and take a refreshing dip

26. Feb 28 -
 Genovesa, a
 bird paradise

Today you'll explore Genovesa Island. The morning starts with a steep but short climb – only 90 feet – up Prince Philip's Steps – El Barranco – to reach flat and rocky plateau. Once there, you can walk along comfortably and look out for large colonies of Nazca Boobies, Red-footed Boobies, Great Frigatebirds and Storm Petrels. Afterwards or instead, hop into a kayak for some aquatic adventuring.

In the afternoon, we'll land and swim at the beautiful beach that fringes Darwin Bay for a swim. Following this refreshing dip, take a stroll and observe hundreds of island birds, or alternatively just take it easy on the beach, swimming, snorkelling or kayaking.

ONE LAST ADVENTURE

See giant tortoises in the wild

27. Feb 28 -
 One last
 adventure

We start our last morning on the north shore of Santa Cruz Island. A dry landing at a passenger wharf and a bus ride to the loftier region of the island will provide a final highlight of your expedition cruise: giant tortoises in the wild.

The windward slopes of the island are set aside as a reserve that's home to two species of giant tortoise. These lush highlands also feature dense forests of Galápagos daisies, orchids and bromeliads.

After this visit we'll transfer directly to the airport in Baltra for your flight to Quito to connect to your international flight. If you prefer, in Guayaquil.

To explore more of Ecuador, why not extend your stay and join one of our post-voyage options.

Im Preis inbegriffen

Flights

- Flights in economy class between Quito and Baltra, and Baltra and Quito, including all taxes

Hotel

- Two hotel nights in Quito before the expedition cruise, including breakfast, and dinner on Day 2

Transfers

- Transfers between the airport and the hotel in Quito before the expedition cruise
- Transfers between the airport and the ship in Baltra

Excursion

- Full-day excursion: Historic Quito & Middle of the World, including lunch, before the expedition cruise

Extras

- Galápagos Islands National Park admission fee
- Transit Control Card for the Galápagos Islands
- Access to the airport lounge at the Quito (or Guayaquil) airport upon return from the Galápagos Islands for guests flying internationally on the day of disembarkation

Expedition Cruise

- A stay in a cabin of your choice
- Daily breakfast, lunch and dinner
- Wine, beer and spirits available at meals and throughout the day and evening (subject to licensing laws, excludes premium drinks)
- All day coffee, tea and soft drinks
- A complimentary reusable Ocean Bottle water bottle to refill on board and take home
- An HX backpack
- Professional photos from your trip taken by our onboard photographer
- Complimentary Wi-Fi. Please note, streaming is not supported
- Use of hot tubs, fitness room, lounges and more
- Gratuities included. Fantastic service is standard at HX – though if you'd like to leave something extra, it's always appreciated
- Range of included activities

Onboard Activities

- In-depth lectures and discussions hosted by our knowledgeable Expedition Team
- Full access to the ship's Science Corner
- Citizen Science Programme allows guests to assist with ongoing scientific research
- Professional onboard photographer gives tips and tricks for the best landscape and wildlife photos
- Daily briefing with the Expedition Team about the plans for the next day

Landing Activities

- Escorted and guided landings with small panga boats
- Necessary equipment for activities, such as walking poles and snorkelling equipment, will be provided on board on loan. Your HX travel documents will have a recommended packing list.
- Expedition photographer on hand to assist you

Notes

- All planned activities are subject to weather conditions
- Your flight from Baltra will be to Quito. If you wish to end your expedition in Guayaquil, please advise your booking agent . You can also change your final destination from Quito to Guayaquil while booking online.
- Quito's altitude is at approximately 9,350 feet above sea level and during your stay, you might experience mild altitude sickness
- Excursions and activities are subject to change
- Please make sure you meet all entry and boarding requirements
- No gratuities expected
- Depending on your flight times, an additional overnight might be needed (not included)

Nicht im Preis inbegriffen

- International flights
- Travel insurance
- Luggage handling
- Additional overnight(s) if required due to international flight timings

Ihr Schiff

Ihr Schiff ist die "MS Santa Cruz II". Ausführlich stellen wir Ihnen dieses Schiff auf unseren Schiffseiten vor. [Ausführliche Informationen zu diesem Schiff.](#)

Passagiere

90

Bordsprachen



Special

Science-Corner

