

IHRE REISE

Machu Picchu, Amazonas & Antarktische Odyssee – Kreuzfahrt und Landreise

Reisetermin

12.01.2026 - 14.02.2026

Reisedauer

34 Tage

Reederei / Schiff

Scenic Eclipse / SCENIC Luxury Cruises & Tours



Scenic Eclipse Deluxe Veranda Suite CA, Deck 6



Doppelbelegung



Nicht verfügbar

Einzelbelegung



Nicht verfügbar

Scenic Eclipse Deluxe Veranda Suite BA, Deck 7



Doppelbelegung



Nicht verfügbar

Einzelbelegung



Nicht verfügbar

Scenic Eclipse Deluxe Veranda Suite AA, Deck 7



Doppelbelegung



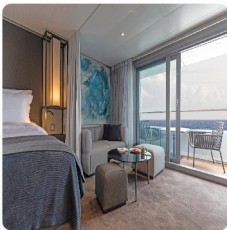
Nicht verfügbar

Einzelbelegung



Nicht verfügbar

Scenic Eclipse Grand Deluxe Veranda Suite DD, Deck 5



Doppelbelegung



Nicht verfügbar

Einzelbelegung



Nicht verfügbar

Scenic Eclipse Spa Suite SA, Deck 9



Doppelbelegung



Nicht verfügbar

Einzelbelegung



Nicht verfügbar

Scenic Eclipse Deluxe Veranda Suite DB, Deck 5



Doppelbelegung



Nicht verfügbar

Einzelbelegung



Nicht verfügbar

Scenic Eclipse Spa Suite SB, Deck 9



Doppelbelegung



Nicht verfügbar

Einzelbelegung



Nicht verfügbar

Scenic Eclipse Veranda Suite A, Deck 8



Doppelbelegung



Nicht verfügbar

Einzelbelegung



Nicht verfügbar

Scenic Eclipse Veranda Suite B, Deck 7



Doppelbelegung



Nicht verfügbar

Einzelbelegung



Nicht verfügbar

Scenic Eclipse Veranda Suite C, Deck 6



Doppelbelegung



Nicht verfügbar

Einzelbelegung



Nicht verfügbar

Scenic Eclipse Veranda Suite D, Deck 5



Doppelbelegung



Nicht verfügbar

Einzelbelegung



Nicht verfügbar

Scenic Eclipse Deluxe Veranda Suite DA, Deck 5



Doppelbelegung



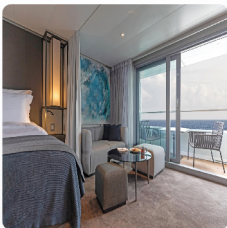
Nicht verfügbar

Einzelbelegung



Nicht verfügbar

Scenic Eclipse Grand Deluxe Veranda Suite AD, Deck 8



Doppelbelegung



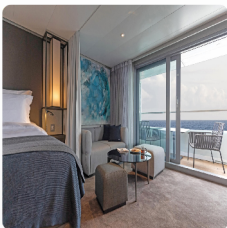
Nicht verfügbar

Einzelbelegung



Nicht verfügbar

Scenic Eclipse Grand Deluxe Veranda Suite BD, Deck 7



Doppelbelegung



Nicht verfügbar

Einzelbelegung



Nicht verfügbar

Scenic Eclipse Grand Deluxe Veranda Suite CD, Deck 6



Doppelbelegung



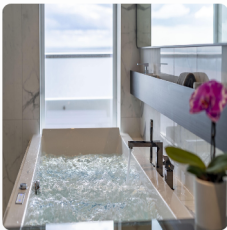
Nicht verfügbar

Einzelbelegung



Nicht verfügbar

Scenic Eclipse Spa Suite S, Deck 8



Doppelbelegung



Nicht verfügbar

Einzelbelegung



Nicht verfügbar

Scenic Eclipse Grand Panorama Suite GP, Deck 6



Doppelbelegung



Nicht verfügbar

Einzelbelegung



Nicht verfügbar

Scenic Eclipse Panorama Suite P, Deck 8



Doppelbelegung



Nicht verfügbar

Einzelbelegung



Nicht verfügbar

Scenic Eclipse Owners Penthouse Suite OP, Deck 9



Doppelbelegung



Nicht verfügbar

Einzelbelegung



Nicht verfügbar

Scenic Eclipse Two-Bedroom Penthouse Suite TP, Deck 9



Doppelbelegung



Nicht verfügbar

Einzelbelegung



Nicht verfügbar



Lima

Tag 1

Welcome to Lima, the vibrant capital of Peru. This cosmopolitan city is home to an incredible food scene, some of the world's finest restaurants, compelling museums and contemporary galleries.

Check in for a two-night stay at your stylish, contemporary hotel set beside the beach.

Lima

Tag 2

Embark on a captivating exploration of Lima, a city that seamlessly blends history and modernity. From the meticulously restored colonial architecture to the hidden gems tucked away in its bustling streets, your expert local guide will reveal the city's rich tapestry of culture and heritage. Beyond Baroque balconies lie secret treasures from the age-old library to the patchwork of bones that line the ossuary of the city's grand Franciscan monastery.

Enjoy a city tour with a welcome lunch, exploring the charms of colonial and modern Lima. Admire cathedrals and convents, visit San Isidro financial district and tour the famed Larco Museum.

Lima > Sacred Valley

Tag 3

Bid farewell to Lima as you fly to Cuzco, the gateway to the Sacred Valley. Travel through breathtaking landscapes to your luxurious sanctuary set beside the Urubamba River amidst the majestic Andes. Your relaxing stay in the Sacred Valley allows you to experience the history, unique lifestyle, culture and majestic scenery of this heartland of the former Inca empire.

Tonight, delight in an unforgettable culinary experience at a Tapas Dinner with local performance.

Sacred Valley

Tag 4

Join your expert local guide for a walking tour of Ollantaytambo, the site where Manco Inca defeated the Spanish conquistadors. Indulge in an authentic Andean feast at Hacienda Huayocari, where tradition comes to life through vibrant weaving demonstrations and stories of local customs and life. The afternoon invites you to wander the charming village of Urubamba at your leisure.

Sacred Valley

Tag 5

Today, tailor your day to your tastes and pace.

Scenic Freechoice: Explore the ruins of Pisac, built by the Incas in the 15th century, and its vibrant markets. Peruvians from surrounding villages come to purchase their fruit, vegetables and meat, and you can find authentic crafts and clothing. Or marvel at the engineering features and mysteries of Moray, and the mesmerising Incan salt pans, where thousands of pools are dug into the mountainside.

Indulge in a culinary extravaganza featuring five tantalising meats, each prepared in a unique style using ingredients sourced from Tambo's own organic garden.

Sacred Valley > Machu Picchu

Tag 6

This morning, embark on one of the world's most spectacular train rides, a Vistadome rail journey that climbs through breathtaking landscapes to the legendary Machu Picchu. The most famous archaeological site in South America, this mountaintop citadel was built by the Incas in the 15th century but remained lost to history until it was rediscovered in the early 1900s. Explore the enigmatic ruins with expert guides, delving into the mysteries of this ancient site.

As night falls, retreat to your charming hotel in Machu Picchu.

Machu Picchu > Cuzco

Tag 7

Continue your journey by train to the charming city of Cuzco, the imperial capital of the Incas. The oldest continually occupied city on the continent, it sits at a soaring 3,399 metres above sea level, making it one of the highest settlements in the world.

You'll be welcomed to the luxurious hotel. Set inside a 500-year-old mansion, you'll spend two nights ensconced in the heart of this storied city, surrounded by opulence and history.

Cuzco

Tag 8 Unravel the secrets of Cuzco as you wander through its cobblestone streets and past awe-inspiring architecture. On your walking tour, you will uncover the history of this World Heritage-listed site where ancient Incan ruins sit alongside colonial whitewashed houses and grand Baroque palaces. Your final stop will be the imposing ruins of Sacsayhuamán fortress, where the carved stone blocks form the shape of a puma's head.

Scenic Enrich

Immerse yourself in the local community as you visit a school supported by Scenic, forging connections that transcend borders. (Availability dependent on school holidays).

Cuzco > Amazon

Tag 9 This morning, set off for an adventure in the heart of the rainforest. Fly to Iquitos, a sleepy port city on the banks of the Amazon River, and step into a world of luxury aboard Delfin III. This boutique ship will be your floating sanctuary for the next four nights. Settle into your spacious suite, with its floor to ceiling windows looking out over the calm river and prepare to immerse yourself in the natural wonders of the Amazon.

Amazon

Tag 10 Embark on a series of intimate excursions that will take you deep into the heart of the Amazon rainforest. You will explore remote tributaries of the Amazon River, trek along jungle trails teeming with life, visit Indigenous communities living as they have for centuries, and spot exotic wildlife hiding amongst the lush greenery. Whether cruising along the waterways or venturing into the lush wilderness with expert naturalist guides, every moment promises a new remarkable experience.

Amazon

Tag 11 Continue your exploration of the Amazon, discovering its hidden treasures and untamed beauty. Glide silently along narrow tributaries, guided by experts sharing fascinating river tales. Explore pristine habitats, from mangrove swamps to bamboo stands, uncovering nature's delicate balance. Each day offers new discoveries and moments of wonder in this extraordinary wilderness.

Amazon

Tag 12 Awaken to the rainforest's symphony. Be immersed in the rainforest's natural rhythms, tracking wildlife or simply basking in serenity. Activities vary each day so you could be kayaking or stand-up paddleboarding along the glassy river, fishing for gigantic Amazon catfish, listening to the calls of more than 1,500 species of bird and scanning the water for the elusive pink dolphin. As night falls, retreat to your floating sanctuary, lulled by the river's gentle embrace. Reflect on the day's profound beauty as the sun dips below the horizon.

Amazon > Buenos Aires

Tag 13 Bid farewell to the Amazon and your Tour Director as you fly to Buenos Aires.

Explore the colourful Argentine capital, an elegant city with pockets of unique character. Admire Casa Rosada (the Pink House), the executive mansion and office of the Argentinian President. Explore soulful Recoleta, where leafy streets are lined with stylish boutiques, lavish townhouses and former palaces, as well as the famed Recoleta Cemetery. Discover La Boca's lively Caminito, with its multi-coloured houses, street stalls and festive atmosphere.

Buenos Aires

Tag 14

Discover the vibrant allure of Buenos Aires, the city they call the 'Paris of the Americas'. Immerse yourself in the city's captivating highlights and experience its unique charm. Latin passion and European romance define this beautiful capital, a dynamic city known for its wide-ranging architectural styles, contemporary and historical arts, and culinary experiences. Enjoy a four-hour tour of the city this morning that takes you to the main historic sites of Buenos Aires, including the Casa Rosada (Pink Palace) and the Recoleta Cemetery.

Your visit is only complete when you experience a mesmerising tango show. This evening, witness the passion of Argentine tango at the Gala Tango show, accompanied by a sumptuous dinner and Argentinian wine.

Buenos Aires

Tag 15

Indulge in another delicious breakfast before delving deeper into Buenos Aires with one of these enriching Scenic Freechoice experiences.

Scenic Freechoice:

Buenos Aires Street Art: Take a tour with a local artist to discover the vibrant urban art scene. Go off the beaten path to visit hidden art spots and open-air galleries.

Buenos Aires Culinary Delight: Learn about Argentinian cuisine and authentic flavours on a culinary tour of the city. Enjoy local restaurants, traditional parillas (steakhouses) and Argentinian wine.

Buenos Aires > Ushuaia

Tag 16

From Buenos Aires your included transfer flights will take you to Ushuaia, the main island of Tierra del Fuego and the southernmost city in the world. The Captain and crew will warmly greet you as you board your ultra-luxury Discovery Yacht.

Toast the start of your once-in-a-lifetime expedition as you depart South America and cruise through the calm and scenic Beagle Channel, named so for the ship that carried Charles Darwin on his five-year discovery journey. Admire the dramatic views of the Andean mountains from the comfort of your private verandah or from the Observation Deck with its commanding view of the bow.

At sea

Tag 17

Today take some time to explore the Discovery Yacht and familiarise yourself with all the areas on board your new ultra-luxury home. Visit the Sky Bar on Deck 10 and step into the tranquil Senses Spa# on Deck 6 with its steam rooms, saunas, and relaxing Salt Therapy Lounge.

Join an introductory presentation about your polar expedition by the Discovery Team in the state-of-the-art theatre. At night, enjoy world-class productions from musical theatre and cabaret to pop music, dance, and fun interactive game shows.

Due to the extraordinary nature of the region, Discovery excursions throughout your Expedition Voyage are dependent on the ice and weather conditions. Your experienced Captain and specialist polar Discovery Team, with extensive experience in the region will craft your voyage to maximise the 18–20 hours of daylight. They will prepare you for your first landing on the White Continent, providing valuable insights and practical information for your polar expedition.

Falkland Islands

Tag 18

Remote and sparsely populated, the Falkland Islands are a wildlife lover's paradise. The world's largest population of Gentoo penguins is found here, in addition to King, Magellanic and Rockhopper penguins. Watch as they waddle along, interacting with each other.

You can also find black-browed albatross, plus Cobb's wren and Falkland's flightless steamer duck, which are both endemic bird species. Make sure to ask for some wildlife insights from the expert Discovery Team – comprised of up to 20 polar experts this team of geologists, historians, ornithologists, marine biologists, and glaciologists is at the heart of your Antarctic Voyage.

Scenic Discovery: Daily experiences during your expedition voyage may include cruising on Zodiacs, stepping ashore to view vast penguin rookeries, kayaking, stand-up paddleboarding, soar above in the helicopter^ and dive below in the submersible^.

Falkland Islands

Tag 19

While in the Falkland Islands, you'll visit capital Stanley (subject to weather and operational conditions). Since its colonisation in the 18th century, the ownership of the Falkland Islands has been clouded in controversy between France, Britain, Spain and Argentina. This town offers a unique British outpost feel. Visit local shops, see the Christ Church Cathedral with its whalebone arch, or share a pint at an English pub.

Tonight could be the night you meet your new friends at Sushi *@ Koko's for dinner. Enjoy entertainment in the state-of-the-art theatre and unwind with a nightcap at the Scenic Lounge Bar.

Scenic Freechoice:

Walk Stanley: take a walking tour of the small capital with an expert local guide for a closer look at life in this rugged location.

Battlefields a Mountain Perspective: visit Falklands War battlegrounds on a Battlefields Tour while admiring the views of the Island.

Stanley Highlights: this tour by coach offers a thorough introduction to the town's key sights and historical landmarks.

Fitz Roy Farm Tour: Start at the Jetty Visitor Center with a brief history of the Falklands, then continue to the shearing shed for a live shearing demonstration, followed by a visit to the Farm Manager's House.

At sea

Tag 20

Freshly squeezed juice, barista-made coffee or tea delivered to your door by the butler will help start your day. Head to the gym for a workout or the studio for a Pilates class, some guided stretching or aerial yoga. You may wish to book a treatment at the tranquil Senses Spa#. Perhaps an ESPA facial or massage or an alternative therapy including Ayurvedic massage.

Then visit the state-of-the-art theatre to hear Enrichment lectures and IAATO briefings from the Discovery Team.

In the evening, settle in at the spacious Scenic Lounge Bar to enjoy your beverage of choice. With Scenic's signature all-inclusive ultra-luxury philosophy, indulge in top shelf spirits, over 130 whiskeys, a premium wine list and French Champagne.

At sea

Tag 21

As you cruise towards South Georgia, enjoy a specialty tea or coffee in the Observation Lounge and watch the world float by through Swarovski telescopes.

Choose one of up to 10 dining experiences and spend time with newly made friends – enjoy a casual lunch at Azure Bar & Café and an elegant dinner at Elements. At night, enjoy a performance in the state-of-the-art theatre before you retreat to your ultra-luxury suite with a nightcap.

South Georgia

Between the 3000-metre mountain range that forms the spine of South Georgia Island, shattered glaciers carve their way through tussock grass to the deeply indented coastline.

Tag 22

Today you'll land at the deserted whaling village of Stromness (subject to weather and operational conditions) where after a gruelling 36-hour hike through the South Georgia Mountains, Sir Ernest Shackleton was helped by the Norwegian whaling station manager.

Next, you'll head to Fortuna Bay (subject to weather and operational conditions) which has panoramic views of jagged summit peaks and remarkable König Glacier.

Scenic Discovery: Today you may have the chance to explore this fascinating landscape on Zodiacs, kayaks, stand-up paddleboards, self-pace hike and submersible[^] excursions. Your expert Discovery Team will take you on enlightening excursions that put you close to South Georgia's stunning wildlife and nature.

South Georgia

Tag 23

Pay your respects to the renowned explorer Sir Ernest Shackleton at his final resting place in the settlement of Grytviken. Here, you can also see the remnants of old whaling stations, with some ships left rusting around the bay.

Scenic Discovery: Explore by Zodiac, kayak or stand-up paddleboard with possible shore landings (weather and ice permitting).

South Georgia

Tag 24

At South Georgia's southern tip, Cooper Bay (subject to weather and operational conditions), watch for giant petrels and brown skuas as they soar above and playful fur seals in underwater kelp forests. Climb a short but steep hill to find a macaroni penguin colony hidden among tussock grasses.

Scenic Discovery: Explore by Zodiac, kayak, or stand-up paddleboard, with potential shore landings, beach walks, and hikes to historical sites (weather and ice permitting). To further discover South Georgia book a submersible[^] experience.

At sea

Tag 25

After days of exploration, spend time relaxing in your spacious suite. The Discovery Team will help you prepare for your first landing on the White Continent, offering insight and inspiration as well as giving you practical information about your upcoming polar expedition.

Have you visited the bridge yet. Thanks to the Captain's open bridge policy, guests are welcome any time to learn more about the technical abilities of The World's First Discovery Yacht and see it in full operation. The bridge is also one of the best viewing areas on the ship.

At sea

Tag 26

Today you will enter Antarctic waters, an unpredictable but stunningly beautiful environment that always surprises. Put on your complimentary polar parka and head to the Observation Deck to search for icebergs.

Watch out for whale blows in the distance. Your expert polar Discovery Team will be on hand to provide and answer any insightful information.

In the evening, explore more of the up to 10 all-inclusive dining experiences on board, sampling fine French cuisine at Lumière* or vibrant Asian fusion at Koko's. Alternatively, relax and dine in the comfort of your suite and have your evening nightcap brought by your butler.

Antarctica

Tag 27

Slide open the floor-to-ceiling doors of your verandah suite to see icebergs sculpted by nature and glacial mountains rising thousands of metres from the ocean. True magic awaits as you witness the incredible wildlife spectacle: from the graceful seals to majestic whales and delightful colonies of penguins that dot the landscape.

Antarctica is also a birdwatcher's paradise, with more than 40 different species. Keep your eyes peeled for wandering albatrosses, which has the largest wingspan of any flying bird, as well as shearwaters, giant petrels and more.

Scenic Discovery: Explore by Zodiac, kayak or stand-up paddleboard with possible shore landings (weather and ice permitting). To see Antarctica from above or below the horizon book a helicopter[^] or a submersible[^] experience.

Antarctica

Tag 28

Experience the awe-inspiring beauty of Brown Bluff (subject to weather and operational conditions), where towering canyon walls, dramatic boulders, and ice-capped volcanic wonders create a landscape like no other. Just across the Antarctic Sound lies Kinnes Cove (subject to weather and operational conditions), where the striking red hues of the Madder Cliffs paint a picture of untouched beauty. Keep your eyes peeled—you might just be lucky enough to encounter charming Gentoo penguins in their natural habitat. This is adventure redefined!

Scenic Discovery: Enjoy daily Discovery excursions. Cruise on the Zodiacs around ice formations, step onto islands to view vast penguin rookeries and seals. Kayak or stand-up paddleboard past icebergs and hear the ice cracking and whales feeding below. Soar above the horizon in the helicopter[^] or dive below in the submersible[^] for further discovery.

Antarctica

Tag 29

Around 12 million penguins can be found living on the Antarctic Peninsula, including Adélie, Chinstrap, Gentoo, and the very rare Emperor penguins. Guided by the expert polar Discovery Team, you'll witness colonies up close; hear their mighty calls and watch as they clumsily waddle along and interact with each other.

Whales are another majestic creature you may encounter, whether a minke, a humpback or an orca. Watch them from the comfort of your ultra-luxury Discovery Yacht, in a Zodiac with an expert polar Discovery Team member, or from their level in a kayak or stand-up paddleboard – a breathtaking experience.

Scenic Discovery: When enjoying daily Scenic Discovery excursions, ask for your expert Discovery Leader for photography tips and guidance on how to spot the wildlife around you. They will help you enjoy these incredible moments while cruising on the Zodiacs, kayaking and stand-up paddleboarding around impressive ice formations, and don't miss out on the opportunity for flightseeing and Submersible exploration dives.

Explore by Zodiac, kayak or stand-up paddleboard with possible shore landings (weather and ice permitting). To see Antarctica from above or below the horizon book a helicopter[^] or a submersible[^] experience.

Antarctica

Tag 30

Lemaire Channel (subject to weather and operational conditions), renowned for its picturesque views and often referred to as 'Kodak Alley'. If during your voyage your Discovery Yacht weaves through this channel, make sure you set your alarm and embrace the cool air from the Observation Terrace. Pass through the 11-kilometre-long channel, just 700 metres wide at its narrowest point, and be amazed at the dramatic rocky mountains and glowing blue icebergs so close to the ship.

In between Scenic Discovery excursions, enjoy a specialty tea or coffee in the Observation Lounge and watch the world float by through Swarovski telescopes.

Antarctica

The polar plunge is a once-in-a-lifetime opportunity and a rite of passage on an expedition to Antarctica. Once throughout your voyage, the marina will be set up for anyone who'd like to jump into the Antarctic waters.

Tag 31

As you stand on the edge, ready to jump, you'll feel the adrenaline rush. When you jump, an invigorating, exciting and surprisingly refreshing sensation will take over.

If you choose to skip the polar plunge, make sure you find a good viewing location to watch the chilly jumpers emerge. Join them for a cup of hot chocolate or a glass of whiskey.

Scenic Discovery: Explore by Zodiac, kayak or stand-up paddleboard with possible shore landings (weather and ice permitting). To see Antarctica from above or below the horizon book a helicopter[^] or a submersible[^] experience.

At sea

Tag 32

Cruising the Drake Passage back to the tip of South America, there is plenty of time to indulge in the ultra-luxury of your Discovery Yacht and reflect on the magic moments you've experienced in the Southern Ocean.

Curl up in one of the private cabanas on Deck 10 with a book or meet friends for a coffee or glass of wine in the Observation Lounge on Deck 5, where you'll be enchanted by the endless horizons of the ocean from the panoramic glass windows.

At sea > Ushuaia

Tag 33

This is your final day on board your Discovery Yacht, so take the time to return to your favourite spots. That might mean one last treatment[#] in the luxurious Senses Spa or stretching out in a class at the PURE: Yoga & Pilates Studio.

Sit down for lunch with your new friends as you recall your favourite memories from your time on the seventh continent. Tonight, raise a glass to an unforgettable voyage at the spacious Scenic Lounge Bar. Enjoy your beverage of choice, whether it be aged whiskey or a glass of wine. Scenic Eclipse will arrive in Ushuaia, the main island of Tierra del Fuego and the southernmost city in the world, late this evening.

Ushuaia, Argentina > Buenos Aires

Tag 34

Your voyage ends this morning as you farewell the crew and fellow guests. Disembark after breakfast for your included transfer flight to Buenos Aires, taking away memories of a truly unforgettable experience.

Please book your flight to depart out of Buenos Aires after 09:30 PM.

[^]Flights on board our two helicopters and submersible experiences are at additional cost, subject to regulatory approval, availability, weight restrictions, medical approval and weather, ice and tidal conditions. Helicopter not available in South Georgia. [#]Spa treatments at additional cost. +All drinks on board, including those stocked in your mini bar, are included, except for a very small number of rare, fine and vintage wines, Champagnes and spirits. *Specialty restaurants require a reservation, enquire on board.

The itinerary is a guide only and may be amended for operational reasons. As such Scenic cannot guarantee the voyage will operate unaltered from the itinerary stated above. Locations listed within South Georgia, Falkland Islands and Antarctica are subject to weather and operational conditions. Sightings cannot be guaranteed. Please refer to our terms and conditions for further information.

Im Preis inbegriffen

- Services und Annehmlichkeiten an Bord
- Maximal 229 Gäste an Bord (200 in den Polarregionen)
- Großzügige Suiten mit privater Veranda 2:1-Verhältnis
- Gäste- und Butlerservice für jeden Gast
- Zehn kulinarische Erlebnisse in neun Gourmet-Menues – von gemütlicher Atmosphäre bis zum eleganten Fine Dining
- Auswahl an Premium-Markengetränken mit über 101 Whiskysorten
- Scenic Discovery Ausflüge mit dem Zodiac
- Komplettes Kajakprogramm und Stand-up-Paddle-Boarding
- Kostenloser Expeditionsarka und Wasserflasche sowie die Nutzung von speziellen Polartiefeln
- Interessantes Vortrags- und Bildungsprogramm mit Experten an Bord
- Spezielle Observation Lounge und Terrasse für die beste Aussicht
- Swarovski-Teleskope an Deck sowie Ferngläser in der Suite, damit Sie keinen aufregenden Momente verpassen
- Senses Spa** auf 551 m2 mit Fitnesscenter, Yoga- und Pilatesstudio
- Außen-Vitalpools nachskandinavischem Vorbild
- Modernes Theater mittäglichem Unterhaltungs- und Bildungsangebot
- WLAN inclusive
- Inlandsflüge inkl. Gebühren
- Flughafentransfers
- Trinkgelder an Bord und an Land

Nicht im Preis inbegriffen

- Internationale Flüge, sofern nicht angegeben
- Reiseversicherungen
- Visa- oder Passgebühren (falls erforderlich)
- persönliche Ausgaben (Einkäufe, optionale Ausflüge)
- sonstige im Programm nicht genannte Leistungen

Ihr Schiff

Ihr Schiff ist die "Scenic Eclipse". Ausführlich stellen wir Ihnen dieses Schiff auf unseren Schiffseiten vor. [Ausführliche Informationen](#) zu diesem Schiff.

Passagiere

199

Bordsprachen



Eisklasse

PC-6

Special

Helikopter

