

IHRE REISE

*Von Island nach Grönland und zu
den Gletschern der Diskobucht*

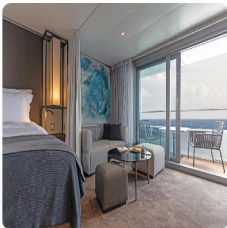
Reisetermin
 15.08.2027 - 29.08.2027

Reisedauer
 15 Tage

Reederei / Schiff
 Scenic Eclipse / SCENIC Luxury Cruises & Tours



Scenic Eclipse Grand Deluxe Veranda Suite CD, Deck 6



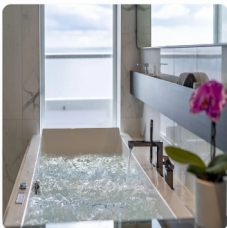
Doppelbelegung


€23.620
 pro Person

Einzelbelegung


€36.325
 pro Person

Scenic Eclipse Spa Suite S, Deck 8



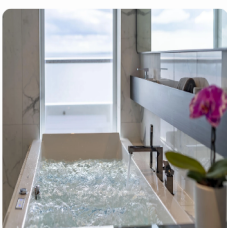
Doppelbelegung


€28.105
 pro Person

Einzelbelegung


€45.295
 pro Person

Scenic Eclipse Spa Suite SA, Deck 9



Doppelbelegung


€28.365
 pro Person

Einzelbelegung


€45.815
 pro Person

Scenic Eclipse Panorama Suite P, Deck 8



Doppelbelegung



€43.965

pro Person

Einzelbelegung



€77.015

pro Person

Scenic Eclipse Grand Panorama Suite GP, Deck 6



Doppelbelegung



€44.745

pro Person

Einzelbelegung



€78.575

pro Person

Scenic Eclipse Owners Penthouse Suite OP, Deck 9



Doppelbelegung



Nicht verfügbar

Einzelbelegung



Nicht verfügbar

Scenic Eclipse Deluxe Veranda Suite AA, Deck 7



Doppelbelegung



Nicht verfügbar

Einzelbelegung



Nicht verfügbar

Scenic Eclipse Deluxe Veranda Suite CA, Deck 6



Doppelbelegung



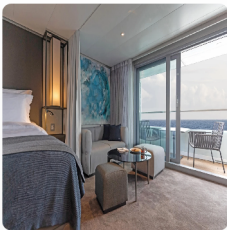
Nicht verfügbar

Einzelbelegung



Nicht verfügbar

Scenic Eclipse Grand Deluxe Veranda Suite AD, Deck 8



Doppelbelegung



Nicht verfügbar

Einzelbelegung



Nicht verfügbar

Scenic Eclipse Veranda Suite A, Deck 8



Doppelbelegung



Nicht verfügbar

Einzelbelegung



Nicht verfügbar

Scenic Eclipse Veranda Suite C, Deck 6



Doppelbelegung



Nicht verfügbar

Einzelbelegung



Nicht verfügbar

Scenic Eclipse Spa Suite SB, Deck 9



Doppelbelegung



Nicht verfügbar

Einzelbelegung



Nicht verfügbar

Scenic Eclipse Deluxe Veranda Suite DB, Deck 5



Doppelbelegung



Nicht verfügbar

Einzelbelegung



Nicht verfügbar

Scenic Eclipse Deluxe Veranda Suite BA, Deck 7



Doppelbelegung



Nicht verfügbar

Einzelbelegung



Nicht verfügbar

Scenic Eclipse Deluxe Veranda Suite DA, Deck 5



Doppelbelegung



Nicht verfügbar

Einzelbelegung



Nicht verfügbar

Scenic Eclipse Two-Bedroom Penthouse Suite TP, Deck 9



Doppelbelegung



Nicht verfügbar

Einzelbelegung



Nicht verfügbar

Scenic Eclipse Veranda Suite B, Deck 7



Doppelbelegung



Nicht verfügbar

Einzelbelegung



Nicht verfügbar

Scenic Eclipse Veranda Suite D, Deck 5



Doppelbelegung



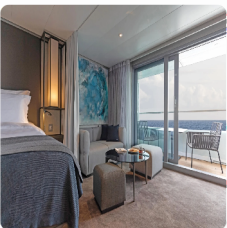
Nicht verfügbar

Einzelbelegung



Nicht verfügbar

Scenic Eclipse Grand Deluxe Veranda Suite DD, Deck 5



Doppelbelegung



Nicht verfügbar

Einzelbelegung



Nicht verfügbar

Scenic Eclipse Grand Deluxe Veranda Suite BD, Deck 7



Doppelbelegung



Nicht verfügbar

Einzelbelegung



Nicht verfügbar



Reykjavik

Welcome to Reykjavik, the world's northernmost capital city and the beginning of your journey. It's a delightful introduction to Iceland's unique and creative culture.

Tag 1

This afternoon, you'll meet the Captain and crew of your ultra-luxury Discovery Yacht, Scenic Eclipse. Be welcomed on board with a glass of Champagne and explore your spacious suite. Meet your fellow guests for a drink in the Sky Bar as you toast to the start of an epic journey.

Please book your flight to arrive into Reykjavik prior to 02:00 PM.

Dynjandivogur Waterfall

Tag 2

Today, prepare to feel freezing mist on your face as you admire the jewel of the Westfjords. Appropriately nicknamed 'the thunder' as it tumbles down seven tiers over 100 metres, Dynjandi Waterfall is one of the most beautiful waterfalls in Iceland. Weather permitting, marvel at nature's grandeur and keep an eye out for local wildlife as you sail through this remote corner of the country.

Isafjordur

- Tag 3 Characterized by deep, blue fjords, separated by flat-topped mountains, Ísafjörður is the largest settlement in the Westfjords of Iceland. Explore remote Iceland from one of the most stunning towns in the country, with old timber framed houses and architecture. Bursting with a wealth of wildlife, keep your eyes peeled for birds and Arctic foxes on the cliffs, seals on the coast and whales cruising in the surrounding ocean.

At Sea

- Tag 4 Enjoy a relaxing day at sea as you make your way west towards Greenland. Perhaps ask your butler to bring breakfast to your suite, to be enjoyed as you watch the icy ocean slip by from your private verandah. Then explore some of the indulgent spaces on board, from the welcoming Observation Lounge to the indulgent Senses Spa# with its sauna and heated therapy lounge.
- Join the experts from the Discovery Team for a lecture or talk about upcoming ports, then sit back with your favourite cocktail for an evening of entertainment in the state-of-the-art-theatre.

Fridtjof Nansen Halvo Glacier

- Tag 5 Unlike the rest of Greenland, the Sermersooq municipality (where the Fridtjof Nansen peninsula is located) is smooth and unbroken terrain. Here, the magnificent Greenland Ice Sheet flows right to the shore. The peninsula gets its name from famed explorer Fridtjof Nansen, who launched his pioneering Greenland venture from Umivik Bay. This 1888 expedition confirmed that Greenland was completely covered in ice.
- Over the next seven days in Greenland, countless adventures await, from exhilarating whale watching to thrilling kayak excursions and invigorating polar plunges, promising unforgettable experiences.

Skjoldungen Fjord

- Tag 6 Glaciers calving, rivers flowing, towering rock walls and colourful forests - the Skjoldungen Fjord is spectacular. Look up to admire huge crevasses and freestanding pillars of ice standing silhouetted against the blue Greenland sky. On the lower slopes, Arctic wildflowers will bloom amongst the dwarf birch and willow trees. Join the Discovery Team on the Observation Deck as nimble Scenic Eclipse weaves through numerous icebergs in this narrow channel and learn about the archaeological remains that have been found in this region, suggesting people lived here over 4,000 years ago.

Cruising Prince Christian Sound > Herjolfsnes

- Tag 7 Carving a breathtaking, naturally formed path that separates the mainland from the islands of Cape Farewell, Prince Christian Sound is one of Greenland's most scenic waterways and a highlight of any cruise in the region. Over a hundred kilometers in length, and flanked by magnificent glaciers and granite cliffs, this narrow passage is only accessible during summer, when the largest ice blockades melt away.
- With her elegant design and state-of-the-art technology, Scenic Eclipse brings you closer to the towering glaciers, icebergs and imposing peaks for unmissable photo opportunities.

At Sea

- Tag 8 After a restorative night of rest in your ultra-luxury suite, wake on your own time. The day is yours to spend exactly as you wish.
- Take the time to acquaint yourself with the exceptional range of facilities on board your ultra-luxury Discovery Yacht. Each indoor and outdoor space has been carefully curated with you in mind. Relax and slow down to the rhythm of the ocean, perhaps using the complimentary binoculars in your suite to scan the horizon in search of whales.

Nuuk

Tag 9 Clinging to a jagged peninsula on the southwest coast of Greenland, Nuuk is the island's capital and largest city. The area has been inhabited since 2200BC, though the present town was only established in 1728.

Nuuk's colourful wooden buildings are a visual standout on your guided tour of the Old Harbour. The picturesque site reveals history and traditions that remain strong today, making Nuuk a hub of modern Nordic culture. Discover innovative architecture inspired by the Northern Lights and restaurants showcasing local recipes and ingredients.

Evighed Fjord

Tag 10 Enjoy a slow day cruising through Evighed Fjord, or 'Eternity Fjord', considered one of the most beautiful in Greenland. Stretching for more than 75 kilometres, you'll be awed by the endless fields of ice glittering under the sun. Tall, jagged peaks threaded with glaciers rise straight up out of the calm blue waters. Many of the glaciers are very active and you will likely hear chunks of ice calving away and collapsing loudly into the ocean. In Evighed Fjord, you'll feel the beauty and power of nature all around you.

Disko Bay

Tag 11 Today, we arrive in the breathtaking Disko Bay, a true paradise for whales and Arctic wildlife. Here, shimmering icebergs of all shapes and sizes drift gracefully across the water, each one a stunning creation of the legendary Ilulissat Icefjord.

Stand in awe on the Observation Terrace or your private verandah, where you can marvel at the sheer grandeur of the surroundings.

Scenic Discovery:

Weather permitting, explore with the Discovery Team by Zodiac, kayak, submersible[^] or helicopter[^].

Ilulissat

Tag 12 Ilulissat is the main town on the Disko Bay, named from the Inuit word for 'iceberg'. It's famous for the large number of icebergs breaking away from the nearby Ilulissat Icefjord, a World Heritage-listed site. The Icefjord is the mouth of the vast Sermeq Kujalleq Glacier, one of the world's fastest moving and most active glaciers, calving a remarkable 46 cubic kilometers of ice annually. Listen for the rumbling sounds in the distance as huge chunks of ice break from the glacier and tumble into the water below.

At Sea

Tag 13 After days of exploration, enjoy some much-needed relaxation as you cruise the waters of West Greenland today. Towering cliffs and serene waters create a mesmerizing backdrop as you graze the day away. Scenic Eclipse's all-inclusive premium beverages ensure you'll find something that suits your taste perfectly.

As this is your last full day on board, take some time for a dip in the temperature-controlled Vitality Pools, a treatment in the Senses Spa[#], an aerial yoga class in the PURE: Yoga & Pilates studio or an exquisite tea in the Observation Lounge.

Kangerlussuaq > Copenhagen

Tag 14 Your journey concludes this morning in the small town of Kangerlussuaq. After one final sumptuous breakfast on board, you'll disembark your ultra-luxury Discovery Yacht. Farewell the crew and your fellow guests, taking with you a wealth of memories from an unforgettable voyage.

For the final part of your journey you will be transferred to Copenhagen for an overnight stay.

Copenhagen

After breakfast in the morning, feel free to depart at your leisure, taking with you a wealth of memories from an unforgettable voyage.

Tag 15

#Spa treatments at additional cost. +All drinks on board, including those stocked in your mini bar, are included, except for a very small number of rare, fine and vintage wines, Champagnes and spirits. Specialty restaurants require a reservation, enquire on board. ^Flights on board our two helicopters and submersible experiences are at additional cost, subject to regulatory approval, availability, weight restrictions, medical approval and weather, ice and tidal conditions.

Helicopter not operational in Greenland.

The itinerary is a guide only and may be amended for operational reasons. As such Scenic cannot guarantee the voyage will operate unaltered from the itinerary stated above. Please refer to our terms and conditions for further information.

Im Preis inbegriffen

- Services und Annehmlichkeiten an Bord
- Maximal 229 Gäste an Bord (200 in den Polarregionen)
- Großzügige Suiten mit privater Veranda 2:1-Verhältnis
- Gäste- und Butlerservice für jeden Gast
- Zehn kulinarische Erlebnisse in neun Gourmet-Menues – von gemütlicher Atmosphäre bis zum eleganten Fine Dining
- Auswahl an Premium-Markengetränken mit über 101 Whiskysorten
- Scenic Discovery Ausflüge mit dem Zodiac
- Komplettes Kajakprogramm und Stand-up-Paddle-Boarding
- Kostenloser Expeditionsparaka und Wasserflasche sowie die Nutzung von speziellen Polartiefeln
- Interessantes Vortrags- und Bildungsprogramm mit Experten an Bord
- Spezielle Observation Lounge und Terrasse für die beste Aussicht
- Swarovski-Teleskope an Deck sowie Ferngläser in der Suite, damit Sie keinen aufregenden Momente verpassen
- Senses Spa** auf 551 m² mit Fitnesscenter, Yoga- und Pilatesstudio
- Außen-Vitalpools nachskandinavischem Vorbild
- Modernes Theater mittäglichem Unterhaltungs- und Bildungsangebot
- WLAN inclusive
- Inlandsflüge inkl. Gebühren
- Flughafentransfers
- Trinkgelder an Bord und an Land

Nicht im Preis inbegriffen

- Internationale Flüge, sofern nicht angegeben
- Reiseversicherungen
- Visa- oder Passgebühren (falls erforderlich)
- persönliche Ausgaben (Einkäufe, optionale Ausflüge)
- sonstige im Programm nicht genannte Leistungen

Ihr Schiff

Ihr Schiff ist die "Scenic Eclipse". Ausführlich stellen wir Ihnen dieses Schiff auf unseren Schiffseiten vor. [Ausführliche Informationen zu diesem Schiff.](#)

Passagiere
199

Bordsprachen


Eisklasse
PC-6

Special
Helikopter

