

IHRE REISE

*Island-Umrundung und
 Überquerung des Polarkreises*

Reisetermin
 01.07.2026 - 11.07.2026

Reisedauer
 11 Tage

Reederei / Schiff
 Scenic Eclipse / SCENIC Luxury Cruises & Tours



Scenic Eclipse Deluxe Veranda Suite BA, Deck 7



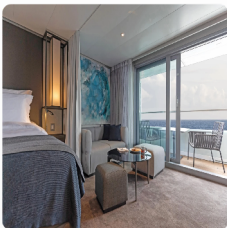
Doppelbelegung


€ 12.342
 pro Person

Einzelbelegung


€ 27.787
 pro Person

Scenic Eclipse Grand Deluxe Veranda Suite DD, Deck 5



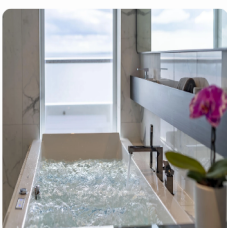
Doppelbelegung


€ 13.342
 pro Person

Einzelbelegung


€ 28.987
 pro Person

Scenic Eclipse Spa Suite SB, Deck 9



Doppelbelegung


€ 16.042
 pro Person

Einzelbelegung


€ 35.487
 pro Person

Scenic Eclipse Spa Suite S, Deck 8



Doppelbelegung


€ 16.042
 pro Person

Einzelbelegung


€ 35.287
 pro Person

Scenic Eclipse Panorama Suite P, Deck 8



Doppelbelegung


€ 29.042
 pro Person

Einzelbelegung


€ 59.837
 pro Person

Scenic Eclipse Deluxe Veranda Suite DB, Deck 5



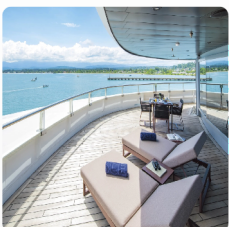
Doppelbelegung


 Nicht verfügbar

Einzelbelegung


 Nicht verfügbar

Scenic Eclipse Grand Panorama Suite GP, Deck 6




Doppelbelegung


 Nicht verfügbar




Einzelbelegung


 Nicht verfügbar




Scenic Eclipse Deluxe Veranda Suite CA, Deck 6

	<p><i>Doppelbelegung</i></p> <p></p> <p>Nicht verfügbar</p>	<p><i>Einzelbelegung</i></p> <p></p> <p>Nicht verfügbar</p>

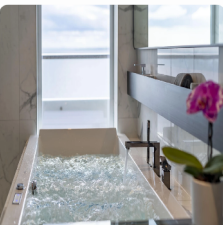


Scenic Eclipse Deluxe Veranda Suite DA, Deck 5

	<p><i>Doppelbelegung</i></p> <p></p> <p>Nicht verfügbar</p>	<p><i>Einzelbelegung</i></p> <p></p> <p>Nicht verfügbar</p>

Scenic Eclipse Veranda Suite B, Deck 7

	<p><i>Doppelbelegung</i></p> <p></p> <p>Nicht verfügbar</p>	<p><i>Einzelbelegung</i></p> <p></p> <p>Nicht verfügbar</p>

Scenic Eclipse Spa Suite SA, Deck 9

	<p><i>Doppelbelegung</i></p> <p></p> <p>Nicht verfügbar</p>	<p><i>Einzelbelegung</i></p> <p></p> <p>Nicht verfügbar</p>

Scenic Eclipse Veranda Suite A, Deck 8



Doppelbelegung



Nicht verfügbar

Einzelbelegung



Nicht verfügbar

Scenic Eclipse Deluxe Veranda Suite AA, Deck 7



Doppelbelegung



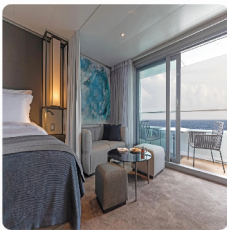
Nicht verfügbar

Einzelbelegung



Nicht verfügbar

Scenic Eclipse Grand Deluxe Veranda Suite CD, Deck 6



Doppelbelegung



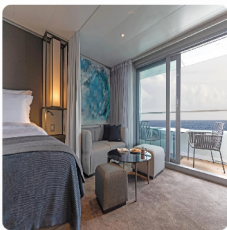
Nicht verfügbar

Einzelbelegung



Nicht verfügbar

Scenic Eclipse Grand Deluxe Veranda Suite BD, Deck 7



Doppelbelegung



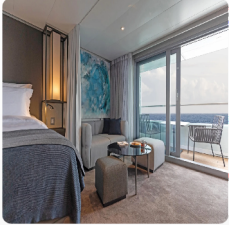
Nicht verfügbar

Einzelbelegung



Nicht verfügbar

Scenic Eclipse Grand Deluxe Veranda Suite AD, Deck 8



Doppelbelegung



Nicht verfügbar

Einzelbelegung



Nicht verfügbar

Scenic Eclipse Veranda Suite D, Deck 5



Doppelbelegung



Nicht verfügbar

Einzelbelegung



Nicht verfügbar

Scenic Eclipse Owners Penthouse Suite OP, Deck 9



Doppelbelegung



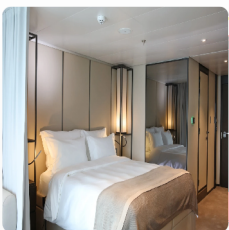
Nicht verfügbar

Einzelbelegung



Nicht verfügbar

Scenic Eclipse Veranda Suite C, Deck 6



Doppelbelegung



Nicht verfügbar

Einzelbelegung



Nicht verfügbar

Scenic Eclipse Two-Bedroom Penthouse Suite TP, Deck 9



Doppelbelegung

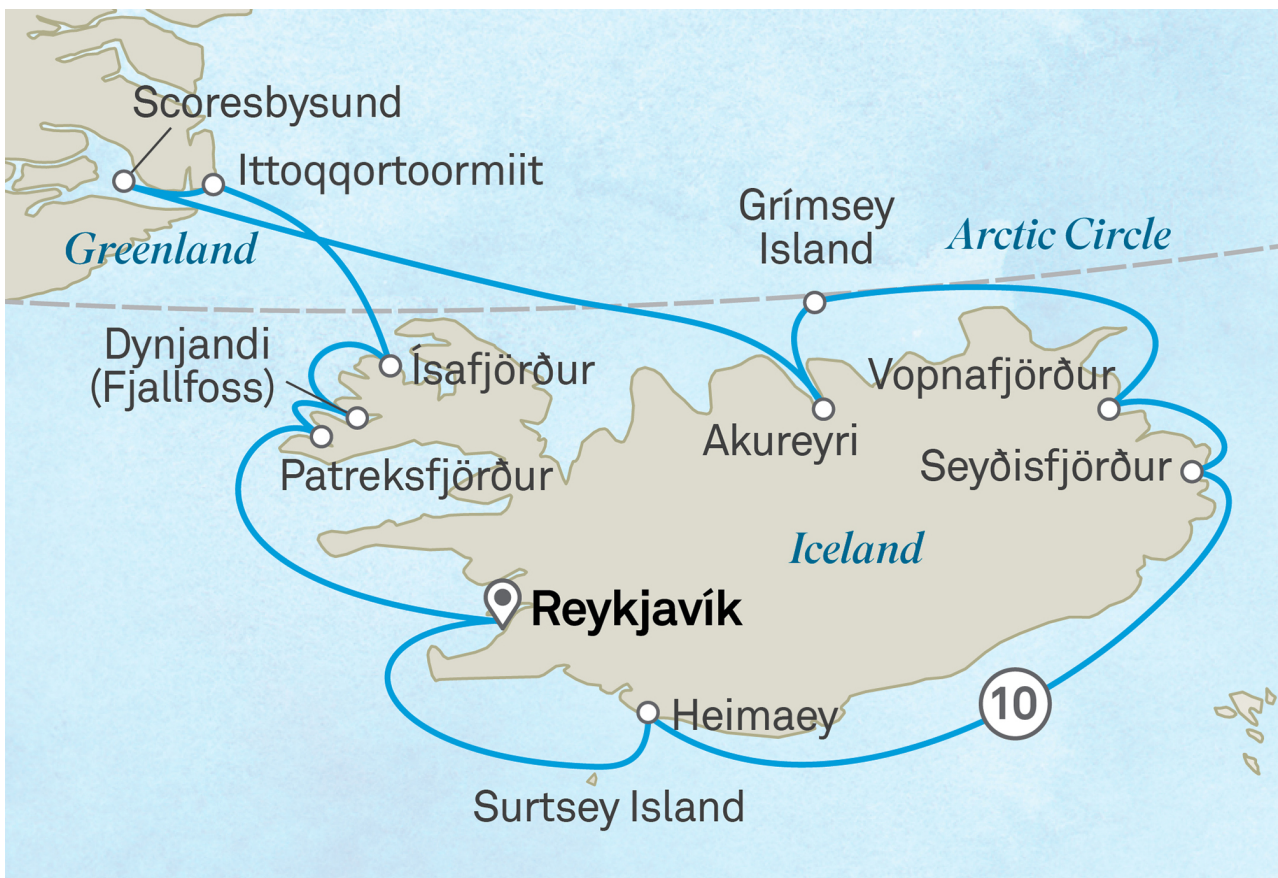


Nicht verfügbar

Einzelbelegung



Nicht verfügbar



Reykjavik, Iceland

Welcome to Reykjavík, the world's northernmost capital city. Your journey begins here in Iceland's unique and imaginative spirit.

Tag 1

This afternoon, you'll meet the Captain and crew of your ultra-luxury Discovery Yacht. Be welcomed on board with a glass of Champagne and explore your spacious suite. Join your fellow guests for a drink in the Scenic Lounge as you toast to the start of an unforgettable journey.

Please book your flight to arrive into Reykjavik prior to 02:00 PM.

Docked: 19:00

Patreksfjörður > Dynjandivogur Waterfall, Iceland

Known as the fjord of adventures, Patreksfjörður is the largest town along the southern part of the Westfjords region. See millions of seabirds nesting on the dramatic Látrabjarg bird cliffs or walk along its spectacular beaches, where the sand ranges from powder white to rich gold.

Weather permitting, later today you will witness the jewel of the Westfjords, Dynjandi Waterfall. Feel the cold mist on your face as you admire the cascading bridal veil falls and discover why it was nicknamed 'the thunder'. Tumbling down seven tiers over 100 metres, it is one of the most beautiful waterfalls in Iceland.

Join the Discovery Team as they present engaging lectures in the state-of-the-art theatre, reflecting on the amazing sights you've experienced so far and sharing insights into the exciting ports ahead. Check the daily program for the schedule.

Elevate your Icelandic experience and take flight on one of two on board helicopters[^], marvelling at the jaw-dropping views of glaciers, volcanoes and cascading waterfalls from above. This exclusive adventure offers a breathtaking new perspective on one of the world's most dramatic landscapes.

Scenic Freechoice:

Walking Tour & Fish Tasting: Explore Patreksfjörður's rich fishing heritage on a guided harbour walk with tastings of fresh and dried Icelandic fish, as well as Icelandic butter. Learn about traditional preservation methods and the village's modern role in sustainable seafood exports to Europe and the U.S.

Látrabjarg Cliff: Visit Europe's largest bird cliff, Látrabjarg, and witness the incredible bird life including puffins. Enjoy breathtaking views and unique photography opportunities.

Rauðasandur Beach Hike (led by Discovery Team): Discover Rauðasandur Beach, renowned for its red sands, following a 2.7km hike from Patreksfjörður. This tranquil spot in Iceland's Westfjords offers stunning contrasts of red sands, blue sea and dark cliffs.

Offshore: 07:00 - 13:00 | 17:00 - 22:00

Tag 2

Isafjörður, Iceland

Isafjörður is the gateway to the Westfjords region on Iceland's northernmost peninsula. Set on the Skutulsfjörður Fjord, surrounded by mountains and the sea, it has been an important fishing and trading centre for over 500 years. The well-preserved Old Town is filled with colourful historic buildings, making for a picturesque stroll.

The surrounding Westfjords area abounds in natural wonders, with waterfalls, hiking trails and jagged cliffs. Isafjörður offers vast, uncharted spaces for relaxation and Nordic stillness, making it a popular destination for travellers seeking a peaceful escape. Tonight, you will sail across the Arctic circle to reach Ittoqqortoormiit.

Elevate your Icelandic experience and take flight on one of two on board helicopters, marvelling at the jaw-dropping views of glaciers, volcanoes and cascading waterfalls from above. This exclusive adventure offers a breathtaking new perspective on one of the world's most dramatic landscapes.

Scenic Freechoice:

Vigur Island: Enjoy a guided walk on Vigur, a 2km by 400m island in Ísafjörður Bay, home to one family. Learn of their eiderdown and egg trade, spot 8,000 puffins and visit Iceland's only windmill and Europe's smallest post office (where you can send home a postcard or two), ending with refreshments served by the family in their 19th-century house.

Tag 3

Valagil Hike: Discover the Westfjords' dramatic landscapes on a 4km round-trip active hike from Ísafjörður to Valagil Canyon via Álftafjörður. Enjoy a marked trail with a thundering waterfall and dramatic lava-layered cliffs.

History at Hesteyri: Experience the remote charm of Hesteyri in Jökulfirðir fjords, surrounded by snow-flecked peaks and tranquil coves. Explore its abandoned 1952 settlement on a guided walk, learning of its isolated past, and enjoy traditional refreshments at the former doctor's house, spotting Arctic foxes, seals or whales along the way.

Life & Culture: Uncover Iceland's rugged northwest with a visit to a restored fisherman's hut south of the Arctic Circle, revealing traditional fishing life. Enjoy a live music performance at an historic church, explore Snæfjallaströnd's scenic valley, visit Ísafjörður's heritage museum and conclude with a tasting of Icelandic 'Brennivín' and local delicacies.

Scenic Discovery:

Enjoy immersive Discovery experiences such as kayaking and zodiac cruising, subject to weather conditions and harbour master approval.

Docked: 08:00 - 14:00

Ittoqqortoormiit, Greenland

Located above the Arctic Circle and nestled beside the world's largest and deepest multi-branched fjord system, Ittoqqortoormiit stands as one of Greenland's most remote towns. Home to approximately 350 residents, this small community offers a fascinating insight into the traditional Inuit way of life. Here, people have embraced a sea-dependent existence, where the ever-changing sea ice opens new opportunities for exploration.

Tag 4

Learn stories of the community's resilience with a guided tour. Explore key landmarks such as the museum, church, weather station and public service building. Enjoy the chance to have your passport stamped in this unique destination, adding a unique touch to your visit.

Scenic Discovery:

Today, weather permitting and with harbour master approval, you may get the opportunity to enjoy immersive Discovery experiences including kayaking and Zodiac cruising.

Scoresbysund, Greenland

Experience an unforgettable journey as you sail past the breathtaking landscape of Scoresbysund, a fjord that reaches a staggering 350 kilometres in length and plunges down 600 metres. Scenic Eclipse will navigate through a maze of towering icebergs that gently drift under Arctic waters, calving from parent glaciers from the Inland Ice.

Tag 5

Take in this awe-inspiring landscape from the Open Bridge alongside your expert Discovery Team, who can answer any questions you have. Or perhaps you'd like to soak it up from your own private verandah.

Alternatively, join the Discovery Team as they present engaging lectures in the state-of-the-art theatre, reflecting on the amazing sights you've experienced so far and sharing insights into the exciting ports ahead. Check the daily program for the schedule.

Scenic Discovery:

Weather and ice conditions permitting, our expert Discovery Team invites you to experience the breathtaking fjords and Arctic landscapes of Scoresby Sound. Expect exciting Zodiac cruises to bring you closer to the pristine beauty of this remote wilderness.

Akureyri, Iceland

Akureyri is the country's second largest settlement after Reykjavik, but with only around 20,000 residents it still feels like a friendly small town. Though it sits just 60 kilometres below the Arctic Circle, the climate is pleasantly mild and picturesque, with colourful homes set on green hills at the base of a volcanic mountain chain.

See the striking Akureyri Church and stroll through one of the world's most northerly botanic gardens, home to endemic Icelandic flora and hardy foreign species. Keep an eye out for the elves and hidden people that are said to dwell in the town.

Elevate your Iceland experience and take flight on one of two on board helicopters, marvelling at the jaw-dropping views of glaciers, volcanoes and cascading waterfalls from above. This exclusive adventure offers a breathtaking new perspective on one of the world's most dramatic landscapes.

Scenic Freechoice:

Leisurely Akureyri & Godafoss Waterfall: Explore Akureyri, the "capital of the North," enjoy its charming architecture and Botanical Gardens, and visit the stunning Godafoss Waterfall.

Tag 6

Whale Watching: Enjoy a whale watching experience in Akureyri's Eyjafjörður, where nutrient-rich waters host Humpback, Minke, Fin and Blue whales, plus white-beaked dolphins and porpoises. Observe abundant seabirds, including seasonal puffins amidst stunning scenery.

Panoramic City & Forest Lagoon: Relax with a scenic visit to Hlíðarfjörður viewpoint, enjoying fjord and mountain views, then unwind at Akureyri's new geothermal spa in Vaðlaskógur forest. Soak in heated pools with Eyjafjörður vistas, embraced by birch and pine.

Jewels of the North: Experience North Iceland's volcanic wonders, visiting Goðafoss (legendary 'Waterfall of the Gods'), Lake Mývatn, Dimmuborgir lava fields, and the Námaskarð geothermal area—witnessing dramatic landscapes and raw geothermal power in one unforgettable day.

Scenic Discovery:

Enjoy immersive Scenic Discovery experiences such as kayaking and zodiac cruising, subject to weather conditions and harbour master approval.

Docked: 13:00 - 23:00

Grimsey Island, Iceland

Grimsey is a small island north of the Icelandic mainland, home to only 100 people and one million seabirds. Nesting on the high cliffs that surround the whole island, the chatter of seabirds here is constant, especially during the 24 hours of sunshine in summer. This grassy outcrop straddles the Arctic Circle, making it one of the few places on earth where you can cross the Arctic Circle on foot – truly a once in a lifetime experience.

Your Discovery Yacht will set sail just after lunchtime to cross the Arctic Circle on your way to Vopnafjörður.

Scenic Freechoice:

Walk Around Grimsey (Easy - 5km): Explore Grimsey Island, Iceland's sole Arctic Circle territory, with its charming driftwood church and vibrant folklore. Admire cliffside seabird colonies where summer egg-collecting thrives, stroll the reinforced harbor settlement, and hear the poignant 1793 epidemic tale, earning an Arctic Circle certificate as a treasured memento.

Tag 7

Walk Around Grimsey (Moderate - 10km): Explore Grimsey Island, Iceland's sole Arctic Circle territory, with its charming driftwood church and vibrant folklore. Follow a slightly more challenging walking path to admire cliffside seabird colonies, stroll the harbor settlement, hear the poignant 1793 epidemic tale, and earn an Arctic Circle certificate as a treasured memento.

Grimsey Passenger Train: Immerse in Grimsey Island's remote allure, perched on the Arctic Circle, with dramatic seabird cliffs and rich folklore. Ride a passenger train through the village, visit the lighthouse for coastal views, cross the Arctic Circle Monument and admire the driftwood church, hearing the 1793 survival tale.

Scenic Discovery:

Today, weather permitting and with harbour master approval, you may get the opportunity to enjoy immersive Discovery experiences including kayaking and Zodiac cruising.

Offshore: 08:00 - 14:00

Vopnafjörður, Iceland > Seyðisfjörður, Iceland

Vopnafjörður is a hidden gem along Iceland's stunning eastern coast. It's long been a busy trading port and is still a flourishing village, home to around 600 people. Many people with Icelandic heritage can trace their history here as it was the largest emigration point for North America in the late 19th and early 20th centuries.

The highlight here is the sprawling, pristine fjordlands that wind along the coast. Embark on outdoor experiences like hiking and birdwatching in the surrounding mountains, offering a true taste of Icelandic wilderness.

Elevate your Iceland experience and take flight on one of two on board helicopters[^], marvelling at the jaw-dropping views of glaciers, volcanoes, and cascading waterfalls from above. This exclusive adventure offers a breathtaking new perspective on one of the world's most dramatic landscapes.

Scenic Freechoice:

Cliffs & Coastline: Hike along the scenic Gljúfursá river on the Drangsnæs Peninsula, ending at the rugged shores of Skjólíförur, where seabirds gather beneath the striking Ljósastapi cliff, an intimate encounter with Iceland's wild coastal beauty.

Tag 8

Burstarfell Turf House Visit & Walk: Journey into Iceland's past at Bustarfell Museum, one of the oldest and best-preserved turf houses, set in scenic Hofsrádalur Valley. Follow a longer walking route through historic rooms and exhibits showcasing rural life from the 18th to 20th century.

Leisure Walk around Vopnafjörður: Experience the charming village of Vopnafjörður with a local guide, exploring abandoned houses, learning about local folklore, visiting the first settlement and church, and enjoying traditional Icelandic refreshments.

Stuðlagil Canyon & Sænautasel Farm: Discover Stuðlagil Canyon's striking basalt columns and vivid emerald or sapphire waters. Then visit Sænautasel Farm, a restored 19th-century turf house, to experience traditional Icelandic rural life and enjoy local refreshments.

Scenic Discovery:

Enjoy immersive Scenic Discovery experiences such as kayaking and zodiac cruising, subject to weather conditions and harbour master approval.

Offshore: 08:00 - 14:00 | 21:00 - Overnight

Seyðisfjörður, Iceland

In a country with an abundance of natural drama, Seyðisfjörður may steal the show. Set at the mouth of a beautiful fjord, this is East Iceland's heart of culture, heritage and hospitality – and then there's the architecture. The centre of town is known for 19th-century timber houses perched on the side of the lagoon, built by fisherfolk when the region was booming.

There's plenty of culture to go with the small-town country charm, complemented by plentiful wildlife, including reindeer and porpoises drawn by the verdant setting of cascading waterfalls and snow-capped mountains.

Elevate your Icelandic experience and take flight on one of two on board helicopters[^], marvelling at the jaw-dropping views from above. This exclusive adventure offers a breathtaking new perspective on one of the world's most dramatic landscapes.

Scenic Freechoice:

Chasing Waterfalls: Experience a breathtaking hiking adventure through the scenic Vestdalur Valley, showcasing stunning landscapes like waterfalls, meadows, wetlands, and ancient human settlements over a thousand years ago.

Vök Baths: Cross the stunning Fjardarheiði mountain pass to reach the peaceful Vök Baths, where natural hot springs offer relaxation amid breathtaking lake scenery. Experience a selection of pools and a sauna inspired by Icelandic traditions.

History & Heritage Walk: Discover the charming town on a guided walking tour through its historic streets and vibrant cultural sites. Conclude your visit at the East Iceland Technical Museum, where you can explore fascinating exhibits at your own pace.

Skálanes Nature Walk: Enjoy a scenic drive through a lush valley dotted with abandoned farms, reflecting Iceland's rural past. Visit the Skálanes Nature and Heritage Centre, a private reserve rich in wildlife and natural beauty.

Scenic Discovery:

Today, weather permitting and with harbour master approval, you may get the opportunity to enjoy immersive Discovery experiences including hiking, kayaking and Zodiac cruising.

Offshore: Overnight - 17:00

Tag 9

Heimaey, Iceland

The earth is always rumbling beneath Iceland. Today, you'll see a perfect example of nature's ability to both create and destroy. When the volcano Eldfell, meaning 'Hill of Fire', erupted here in 1973, parts of the island were covered in lava and ash, sealing them in a virtual time capsule. Walking through the town, you'll be able to see signs of the eruption and fallout.

Keep your eyes open for Atlantic puffins, with more of these unique seabirds nesting here than anywhere else in the world.

This is your final day on board your Discovery Yacht, so take the time to return to your favourite spots. That might mean one last treatment[#] in the luxurious Senses Spa or stretching out in a class at the PURE: Yoga & Pilates Studio.

Scenic Freechoice:

Boat Tour of Heimaey: Set off from Heimaey's historic harbour, shaped by the 1973 eruption, and cruise the Westman Islands' wild beauty past cliffs and caves, guided by tales of its past. View millions of seabirds, including 6–8 million puffins, and spot whales, ending with a musical performance in Klettshellir Cave.

Volcanic Hike & Eldheimar Museum: Enjoy a guided walk through Heimaey's historic harbour, continuing to the lava fields of Eldfell volcano before hiking to its summit for panoramic vistas. Conclude with a visit to the Eldheimar Museum to learn about the 1973 eruption and its impact.

Bus Tour & Eldheimar Museum: Explore Heimaey's natural harbour and dramatic cliffs, visiting Sprangan's rope-swinging site and Herjólfsdalur's Viking ruins. Explore Stórhöfði's puffin colony, view Surtsey and volcanoes Helgafell and Eldfell, then stop at Eldfell viewpoint and Eldheimar Museum before a short drive back to the pier.

Offshore: 14:00 - 20:00

Tag 10

Reykjavik, Iceland

Today you will return to Reykjavik. This is a city that never disappoints – a busy, buzzy capital with a creative soul, wild nightlife and a population of cool, quirky Reykvingurs. Choose to stay longer to explore its stylish restaurants, chic boutiques, innovative galleries and fascinating museums.

After one final breakfast on board, disembark your ultra-luxury Discovery Yacht. Farewell the crew and your fellow guests, taking with you memories of an unforgettable voyage.

Please book your flight to depart out of Reykjavik after 01:00 PM.

Docked: 08:00

#Spa treatments at additional cost. +All drinks on board, including those stocked in your mini bar, are included, except for a very small number of rare, fine and vintage wines, Champagnes and spirits. Specialty restaurants require a reservation, enquire on board. ^Flights on board our two helicopters and submersible experiences are at additional cost, subject to regulatory approval, availability, weight restrictions, medical approval and weather, ice and tidal conditions.

Helicopter not in operation in Greenland.

The itinerary is a guide only and may be amended for operational reasons. As such Scenic cannot guarantee the voyage will operate unaltered from the itinerary stated above. Please refer to our terms and conditions for further information.

Tag 11

Im Preis inbegriffen

- Services und Annehmlichkeiten an Bord
- Maximal 229 Gäste an Bord (200 in den Polarregionen)
- Großzügige Suiten mit privater Veranda 2:1-Verhältnis
- Gäste- und Butlerservice für jeden Gast
- Zehn kulinarische Erlebnisse in neun Gourmet-Menues – von gemütlicher Atmosphäre bis zum eleganten Fine Dining
- Auswahl an Premium-Markengetränken mit über 101 Whiskysorten
- Scenic Discovery Ausflüge mit dem Zodiac
- Komplettes Kajakprogramm und Stand-up-Paddle-Boarding
- Kostenloser Expeditionsparaka und Wasserflasche sowie die Nutzung von speziellen Polartiefeln
- Interessantes Vortrags- und Bildungsprogramm mit Experten an Bord
- Spezielle Observation Lounge und Terrasse für die beste Aussicht
- Swarovski-Teleskope an Deck sowie Ferngläser in der Suite, damit Sie keinen aufregenden Momente verpassen
- Senses Spa** auf 551 m² mit Fitnesscenter, Yoga- und Pilatesstudio
- Außen-Vitalpools nachskandinavischem Vorbild
- Modernes Theater mittäglichem Unterhaltungs- und Bildungsangebot
- WLAN inclusive
- Inlandsflüge inkl. Gebühren
- Flughafentransfers
- Trinkgelder an Bord und an Land

Nicht im Preis inbegriffen

- Internationale Flüge, sofern nicht angegeben
- Reiseversicherungen
- Visa- oder Passgebühren (falls erforderlich)
- persönliche Ausgaben (Einkäufe, optionale Ausflüge)
- sonstige im Programm nicht genannte Leistungen

Ihr Schiff

Ihr Schiff ist die "Scenic Eclipse". Ausführlich stellen wir Ihnen dieses Schiff auf unseren Schiffseiten vor. [Ausführliche Informationen zu diesem Schiff.](#)

Passagiere
199

Bordsprachen


Eisklasse
PC-6

Special
Helikopter

