

IHRE REISE

*Antarktis & Südamerika mit  
 Iguazu und Rio de Janeiro –  
 Kreuzfahrt und Landreise*

Reisetermin

25.02.2027 - 18.03.2027

Reisedauer

22 Tage

Reederei / Schiff

Scenic Eclipse II / SCENIC Luxury Cruises & Tours



Scenic Eclipse II Veranda Suite A, Deck 8



Doppelbelegung



**€28.220**

pro Person

Einzelbelegung



**€51.245**

pro Person

Scenic Eclipse II Deluxe Veranda Suite CA, Deck 6



Doppelbelegung



**€28.275**

pro Person

Einzelbelegung



**€51.355**

pro Person

Scenic Eclipse II Deluxe Veranda Suite AA, Deck 7



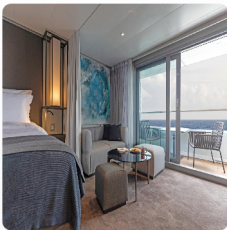
*Doppelbelegung*

  
**€28.990**  
 pro Person

*Einzelbelegung*

  
**€52.785**  
 pro Person

Scenic Eclipse II Grand Deluxe Veranda Suite CD, Deck 6



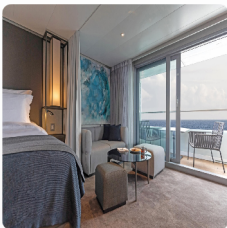
*Doppelbelegung*

  
**€29.210**  
 pro Person

*Einzelbelegung*

  
**€53.225**  
 pro Person

Scenic Eclipse II Grand Deluxe Veranda Suite AD, Deck 8



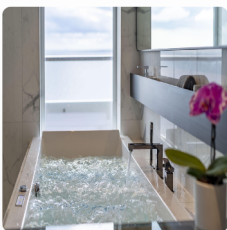
*Doppelbelegung*

  
**€29.650**  
 pro Person

*Einzelbelegung*

  
**€54.105**  
 pro Person

Scenic Eclipse II Spa Suite S, Deck 8



*Doppelbelegung*

  
**€33.170**  
 pro Person

*Einzelbelegung*

  
**€61.145**  
 pro Person

Scenic Eclipse II Spa Suite SA, Deck 9



*Doppelbelegung*

  
**€33.390**  
 pro Person

*Einzelbelegung*

  
**€61.585**  
 pro Person

Scenic Eclipse II Panorama Suite P, Deck 8



*Doppelbelegung*

  
**€45.875**  
 pro Person

*Einzelbelegung*

  
**€86.555**  
 pro Person

Scenic Eclipse II Grand Panorama Suite GP, Deck 6



*Doppelbelegung*

  
**€48.460**  
 pro Person

*Einzelbelegung*

  
**€91.725**  
 pro Person

Scenic Eclipse II Owners Penthouse Suite OP, Deck 9



*Doppelbelegung*

  
**€52.475**  
 pro Person

*Einzelbelegung*

  
**€99.755**  
 pro Person

Scenic Eclipse II Veranda Suite C, Deck 6



*Doppelbelegung*



Nicht verfügbar

*Einzelbelegung*



Nicht verfügbar

Scenic Eclipse II Veranda Suite D, Deck 5



*Doppelbelegung*



Nicht verfügbar

*Einzelbelegung*



Nicht verfügbar

Scenic Eclipse II Veranda Suite B, Deck 7



*Doppelbelegung*



Nicht verfügbar

*Einzelbelegung*



Nicht verfügbar

Scenic Eclipse II Deluxe Veranda Suite DB, Deck 5



*Doppelbelegung*



Nicht verfügbar

*Einzelbelegung*



Nicht verfügbar



Scenic Eclipse II Deluxe Veranda Suite DA, Deck 5



Doppelbelegung



Nicht verfügbar

Einzelbelegung



Nicht verfügbar

Scenic Eclipse II Deluxe Veranda Suite BA, Deck 7



Doppelbelegung



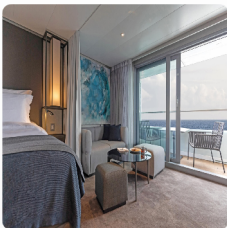
Nicht verfügbar

Einzelbelegung



Nicht verfügbar

Scenic Eclipse II Grand Deluxe Veranda Suite DD, Deck 5



Doppelbelegung



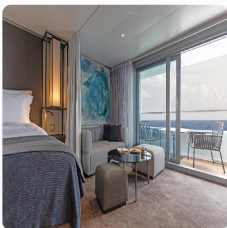
Nicht verfügbar

Einzelbelegung



Nicht verfügbar

Scenic Eclipse II Grand Deluxe Veranda Suite BD, Deck 7



Doppelbelegung



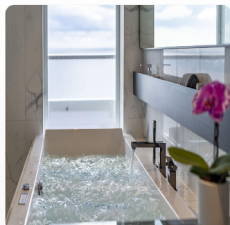
Nicht verfügbar

Einzelbelegung



Nicht verfügbar

Scenic Eclipse II Spa Suite SB, Deck 9



Doppelbelegung



Nicht verfügbar

Einzelbelegung



Nicht verfügbar

Scenic Eclipse II Two-Bedroom Penthouse Suite TP, Deck 9



Doppelbelegung



Nicht verfügbar

Einzelbelegung



Nicht verfügbar



## Buenos Aires, Argentina

Tag 1

Welcome to Buenos Aires, where you'll have an overnight hotel stay. Perhaps plan to spend some time in the city, nicknamed the 'Paris of South America'. Resplendent with Belle Epoque buildings, sidewalk cafes and green spaces, there's the fiery passion of Latin America - a collective love for football, flame-cooked meats (asado) and the tango.

Some of the highlights are La Boca, a colourful, creative mecca with a must-do art walk, and San Telmo, a former aristocratic neighbourhood that was abandoned during a 19th-century epidemic. Mansions were turned into conventillos (shared housing), boutique hotels, antique shops, and tango clubs, exuding a captivating bohemian vibe.

## Buenos Aires > Ushuaia

Tag 2

Fly from Buenos Aires to Ushuaia, the main island of Tierra del Fuego and the southernmost city in the world. The Captain and crew will warmly greet you as you board your ultra-luxury Discovery Yacht, Scenic Eclipse.

Toast the start of your once-in-a-lifetime expedition as you depart South America and cruise through the calm and scenic Beagle Channel, named so for the ship that carried Charles Darwin on his five-year discovery journey. Admire the dramatic views of the Andean mountains from the comfort of your private verandah or from the Observation Deck with its commanding view of the bow.

## At sea

Tag 3

Wake up in your own time as we cruise across the Drake Passage, the infamous waterway that connects South America to Antarctica. Perhaps ask your butler for breakfast to be delivered to your spacious suite or meet fellow guests in the Yacht Club.

Today, join an introductory presentation about your polar expedition by the Polar Discovery Team in the state-of-the-art theatre. Feel the excitement building as they explain how your Zodiac and other Discovery Excursions will work in the coming days. The theatre is where you can watch talks, lectures, movies and documentaries during the day. At night, enjoy world-class productions from musical theatre and cabaret to pop music, dance and fun interactive game shows.

## At sea

Tag 4

Today you will enter Antarctic waters, an unpredictable but stunningly beautiful environment that always surprises. Put on your complimentary polar parka and head to the Observation Deck to spot icebergs for the first time – it's a feeling that will stay with you forever.

Watch out for whale blows in the distance and your expert polar Discovery team will be on hand to provide and answer any insightful information. Comprised of up to 20 members, this team of geologists, historians, ornithologists, marine biologists, and glaciologists is at the heart of your Antarctic Voyage.

## Antarctica

Tag 5

Slide open the floor-to-ceiling doors of your verandah suite to see icebergs sculpted by nature and glacial mountains rising thousands of metres from the ocean. Antarctica is a birdwatcher's paradise, with more than 40 different species, so keep your eyes peeled for wandering albatrosses, which have the largest wingspan of any flying bird, as well as shearwaters, giant petrels and more.

Due to the extraordinary nature of the region, excursions throughout your Expedition Voyage are dependent on the ice and weather conditions. Your experienced Captain and specialist Discovery Team, who have made countless journeys to Antarctica, will use their expertise to design your voyage from day to day, making the most of 18–20 hours of daylight.

**Scenic Discovery:** Daily experiences may include cruising on Zodiacs, stepping ashore to view vast penguin rookeries or historic huts, and kayaking or paddle boarding around icebergs. Wherever your voyage takes you, you will have countless "pinch me" moments.

## Antarctica

Tag 6

Portal Point^^ – a former British refuge hut – may be a potential landing site during your voyage.

Or you may visit Deception Island^^ as part of your itinerary. Nestled in the South Shetland Islands archipelago, it is one of the only places in the world that ships can sail directly into the centre of a submerged caldera of an active volcano. With her world-class design and state-of-the-art technology, Scenic Eclipse can sail through a rocky gap into the horseshoe-shaped harbour. The island is also home to a few small scientific outposts and hundreds of thousands of chinstrap penguins.

Tonight could be the night you enjoy Sushi^ @ Koko's with your new friends. Stay up late in the bar or retire to the library for a moment of blissful solitude before bed.

## Antarctica

Tag 7

Various species of penguins can be found in Antarctic and the sub-Antarctic region, with around 12 million penguins living on the Peninsula, including Adélie, Chinstrap, Gentoo, and the very rare Emperor penguins. Guided by the expert Polar Discovery Team, you'll witness colonies up close; hear their mighty calls and watch as they clumsily waddle along and interact with each other.

Whales are another majestic creature you may encounter, whether a minke, a humpback or an Orca. Watch them from the comfort of your ultra-luxury Discovery Yacht, in a Zodiac with an experienced Polar Discovery Team member, or from their level in a kayak or stand-up paddleboard – a breathtaking experience.

**Scenic Discovery:** When enjoying daily Scenic Discovery excursions, ask for your expert Discovery Leader for photography tips and guidance on how to spot the wildlife around you. They will help you immortalise these incredible moments while cruising on the Zodiacs, kayaking and stand-up paddleboarding around impressive ice formations.

## Antarctica

Tag 8

Lemaire Channel^^, renowned for its picturesque views and often referred to as 'Kodak Alley', could be our next exciting destination. If during your voyage the Scenic Eclipse weaves through this channel, make sure you set your alarm and embrace the cool air from the Observation Terrace. Pass through the 11-kilometre-long channel, just 700 metres wide at its narrowest point, and be amazed at the dramatic rocky mountains and glowing blue icebergs so close to the ship.

In between Scenic Discovery experiences, enjoy a specialty tea or coffee in the Observation Lounge and watch the world float by through Swarovski telescopes.

## Antarctica

Tag 9

In the distance on a clear day you can see Mount Francis^^ standing tall as Anvers Island's highest peak, showcasing the rugged beauty of Antarctica. Every day is unique, you might get the chance to hike or spend time on the pebbled beach, enjoying the view surrounded by curious penguins.

Back on board, explore some of Scenic Eclipse's indulgent spaces, from the welcoming Observation Lounge to the expansive Senses Spa#. Soothe your muscles in the sauna or heated therapy lounge, join a yoga or Pilates class. Choose one of up to 10 world-class dining experiences on board tonight.

## Antarctica

Tag 10

Be sure to pack your swimming suit because you could be going for a swim today. For many, the polar plunge is a once-in-a-lifetime opportunity and a rite of passage on an expedition to Antarctica. Once throughout your voyage, Scenic Eclipse will stop, and the team will set up the marina ready for the brave people who want to jump into the freezing Antarctic waters.

Excitement will spread through the Discovery Yacht, and you will start hearing the contagious nervous laughter. As you stand on the edge, ready to jump, you will feel the adrenaline rush while you second-guess whether this is a good idea. When you jump, the moment before you hit the water will feel like it goes forever, but soon, an invigorating, exciting, and surprisingly refreshing sensation will take over.

If you choose to skip the polar plunge, make sure you find a good viewing location as you feel the chills of everyone coming out of the water. Join them for a cup of hot chocolate or toast with a glass of whiskey.

## At sea

Tag 11

Cruising the Drake Passage back to the tip of South America, there is plenty of time to indulge in the ultra-luxury of your Discovery Yacht and reflect on the magic moments you've experienced in the Southern Ocean.

Freshly squeezed juice, steaming barista-made coffee or tea delivered to your door by the butler will help start your day. Head to the gym for an invigorating workout or the studio for a Pilates class, some guided stretching or aerial yoga.

In the evening, settle in at the spacious Scenic Lounge Bar to enjoy your beverage of choice, whether it be aged whiskey or a glass of wine. With Scenic's signature all-inclusive ultra-luxury philosophy, indulge in top shelf spirits, over 130 whiskeys, a premium wine list and French champagne.

## At sea > Ushuaia

Tag 12

Have you visited the bridge yet? Thanks to the Captain's open bridge policy, guests are welcome any time to learn more about the technical abilities of The World's First Discovery Yacht and see it in full operation. The bridge is also one of the best viewing areas on the ship.

Make sure you book a treatment# at the tranquil Senses Spa before your Discovery expedition ends. Perhaps an ESPA facial or massage# or an alternative therapy including Ayurvedic massage or Japanese shiatsu. Afterwards, hold on to that feeling of calm for a while longer in the Zen-like space of the Vitality Lounge.

## Ushuaia > Buenos Aires, Argentina

Tag 13

Welcome to Argentina and its colourful capital, Buenos Aires. Be immersed in the vibrant energy of this captivating city. Transfer to your elegant hotel for a three-night stay. Set in the stylish La Recoleta neighbourhood.

## Buenos Aires

Tag 14

Discover the highlights and the hidden secrets of the famed 'Paris of the Americas' with your local guide today. Buenos Aires is an elegant city with pockets of colourful character, like Casa Rosada (the Pink House), the executive mansion and office of the Argentinian President. Explore soulful Recoleta, where leafy streets are lined with stylish boutiques, lavish townhouses and former palaces, as well as the famed Recoleta Cemetery. Discover La Boca's colourful Caminito, with its multicoloured houses, street stalls and festive atmosphere.

### Scenic Enrich

This evening, experience the passion of Argentine tango at the Gala Tango show, accompanied by a sumptuous dinner and Argentinian wine.

## Buenos Aires

Tag 15

Indulge in another delicious breakfast at your hotel's L'Orangerie restaurant before delving deeper into Buenos Aires with a choice of Scenic Freechoice experiences. Select between a tour with a local artist to uncover the city's vibrant urban art scene, or embark on a culinary adventure to discover the secrets of authentic Argentinian cuisine on a food walking tour.

### Scenic Freechoice:

**Buenos Aires Street Art:** Take a tour with a local artist to discover the vibrant urban art scene. Go off the beaten path to visit hidden art spots and open-air galleries.

**Buenos Aires Culinary Delight:** Learn about Argentinian cuisine and authentic flavours on a culinary tour of the city. Enjoy local restaurants, traditional parillas (steakhouses) and Argentinian wine.

## Buenos Aires > Iguazú

Tag 16

Depart Buenos Aires this morning and fly to the awe-inspiring Iguazú Falls, the world's largest waterfall by volume, straddling the border of Brazil and Argentina. Enjoy an exclusive three-night Special Stay.

## Iguazú Falls

Tag 17

Wake up early this morning to watch the sun rising over the falls, a truly unforgettable experience. Then enjoy a leisurely tour to discover the Brazilian side of the falls. Stand on the walkway in the middle of the falls and be awed by this vast spectacle with 275 individual cascades spread over a four-kilometre crescent shaped cliff. Enjoy a lunch with a beautiful view inside the National Park.

After lunch, take an exhilarating jet boat ride towards the base of the falls and feel its spray on your face..

Optional helicopter flight - Soar over Iguazú Falls on an optional helicopter flight (additional cost, please book on tour).

## Iguazú Falls

Tag 18

This morning, visit the Argentinian side of the falls. Around 80 per cent of the falls are on this side of the border and the many walkways that thread between the upper and lower falls allow you to get closer into the cliff face. Walk to the lookout where you will see the famous Devil's Throat, the largest and most formidable waterfall within the entire system. Be awed by the sheer volume of water cascading over the falls.

## Iguazú Falls > Rio de Janeiro

Tag 19

Fly to the vibrant city of Rio de Janeiro, famous for its golden beaches, lush jungle and colourful favelas, all under the watchful eye of Christ the Redeemer. The days are fuelled by sunshine and the nights by vibrant samba music.

Check into your luxury hotel for a three-night stay.

### Scenic Sunset Drinks

Sundowners at the Sugarloaf Mountain, sipping drinks and savouring a local tapas dinner while taking in the breathtaking views of Rio at sunset.

## Rio de Janeiro

Tag 20

Today, you will discover the beating heart of this exotic city. Take a fascinating walking tour through downtown Rio, home to the Metropolitan Cathedral and the Selaron Stairs. Learn about Rio's history and culture and get a taste of the local lifestyle. Ride the cogwheel railway to the top of Corcovado Mountain to see the famous Christ the Redeemer statue, a national icon of Brazil.

For lunch, indulge in a mouth-watering Brazilian Churrascaria experience.

## Rio de Janeiro

Embrace the diversity of Rio de Janeiro with two enticing Scenic Freechoice options.

Learn about the garden's vital role in preserving Brazil's unique flora and fauna. Alternatively, delve into the heart of Rio's downtown on a historical walking tour, exploring iconic landmarks. Immerse yourself in the vibrant atmosphere of bustling marketplaces and witness the dynamic rhythm of daily life in this captivating city.

Tag 21

### Scenic Freechoice:

**Botanical Garden:** Walk through the UNESCO biosphere reserve, Jardim Botânico (Botanical Garden) while learning about its unique history. See flora and fauna from around the globe, including monkeys, toucans and giant Amazonian water lilies. With over 6,500 different species of Brazilian and foreign plants, it is teeming with some of the most important and endangered flora in Brazil.

**Rio, City of Contrast:** Take a fascinating walking tour through downtown Rio to see its most famous sights while hearing stories of the city's history, culture and local lifestyle.

Conclude your journey with a farewell dinner at a unique local restaurant.

## Rio de Janeiro

Tag 22

Bid farewell to your Tour Director and fellow travellers as you transfer to Rio de Janeiro's airport to continue your journey of wonder on board Scenic Eclipse. Take with you cherished memories of your time discovering the treasures of Argentina and Brazil.

The itinerary is a guide only and may be amended for operational reasons. As such Scenic cannot guarantee the journey will operate unaltered from the itinerary stated above. Please refer to our terms and conditions for further information.



#### **Im Preis inbegriffen**

- Services und Annehmlichkeiten an Bord
- Maximal 229 Gäste an Bord (200 in den Polarregionen)
- Großzügige Suiten mit privater Veranda 2:1-Verhältnis
- Gäste- und Butlerservice für jeden Gast
- Zehn kulinarische Erlebnisse in neun Gourmet-Menues – von gemütlicher Atmosphäre bis zum eleganten Fine Dining
- Auswahl an Premium-Markengetränken mit über 101 Whiskysorten
- Scenic Discovery Ausflüge mit dem Zodiac
- Komplettes Kajakprogramm und Stand-up-Paddle-Boarding
- Kostenloser Expeditionsarka und Wasserflasche sowie die Nutzung von speziellen Polartiefeln
- Interessantes Vortrags- und Bildungsprogramm mit Experten an Bord
- Spezielle Observation Lounge und Terrasse für die beste Aussicht
- Swarovski-Teleskope an Deck sowie Ferngläser in der Suite, damit Sie keinen aufregenden Momente verpassen
- Senses Spa\*\* auf 551 m2 mit Fitnesscenter, Yoga- und Pilatesstudio
- Außen-Vitalpools nachskandinavischem Vorbild
- Modernes Theater mittäglichem Unterhaltungs- und Bildungsangebot
- WLAN inclusive
- Inlandsflüge inkl. Gebühren
- Flughafentransfers
- Trinkgelder an Bord und an Land

---

#### **Nicht im Preis inbegriffen**

- Internationale Flüge, sofern nicht angegeben
- Reiseversicherungen
- Visa- oder Passgebühren (falls erforderlich)
- persönliche Ausgaben (Einkäufe, optionale Ausflüge)
- sonstige im Programm nicht genannte Leistungen

## *Ihr Schiff*

Ihr Schiff ist die "Scenic Eclipse II". Ausführlich stellen wir Ihnen dieses Schiff auf unseren Schiffseiten vor. [Ausführliche Informationen zu diesem Schiff.](#)

Passagiere

199

Bordsprachen



Eisklasse

PC-6

Special

Helikopter

