




IHRE REISE

Grönland, Hudson Bay und Kanadische Arktis




<p>Reisetermin</p> <p>27.08.2027 - 12.09.2027</p>	<p>Reisedauer</p> <p>17 Tage</p>	<p>Reederei / Schiff</p> <p>Scenic Eclipse / SCENIC Luxury Cruises & Tours</p>
--	---	---






Scenic Eclipse Grand Deluxe Veranda Suite AD, Deck 8

	<p><i>Doppelbelegung</i></p> <p></p> <p>Nicht verfügbar</p>	<p><i>Einzelbelegung</i></p> <p></p> <p>Nicht verfügbar</p>
---	---	---

Scenic Eclipse Deluxe Veranda Suite AA, Deck 7

	<p><i>Doppelbelegung</i></p> <p></p> <p>Nicht verfügbar</p>	<p><i>Einzelbelegung</i></p> <p></p> <p>Nicht verfügbar</p>
---	---	---

Scenic Eclipse Deluxe Veranda Suite CA, Deck 6

	<p><i>Doppelbelegung</i></p> <p></p> <p>Nicht verfügbar</p>	<p><i>Einzelbelegung</i></p> <p></p> <p>Nicht verfügbar</p>
---	---	---

Scenic Eclipse Grand Panorama Suite GP, Deck 6



Doppelbelegung



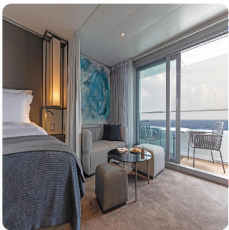
Nicht verfügbar

Einzelbelegung



Nicht verfügbar

Scenic Eclipse Grand Deluxe Veranda Suite CD, Deck 6



Doppelbelegung



Nicht verfügbar

Einzelbelegung



Nicht verfügbar

Scenic Eclipse Panorama Suite P, Deck 8



Doppelbelegung



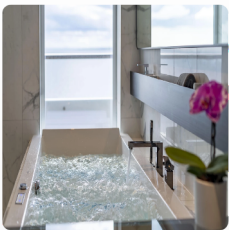
Nicht verfügbar

Einzelbelegung



Nicht verfügbar

Scenic Eclipse Spa Suite S, Deck 8



Doppelbelegung






Nicht verfügbar

Einzelbelegung






Nicht verfügbar




Scenic Eclipse Owners Penthouse Suite OP, Deck 9

	<p><i>Doppelbelegung</i></p> <p></p> <p>Nicht verfügbar</p>	<p><i>Einzelbelegung</i></p> <p></p> <p>Nicht verfügbar</p>
---	--	--

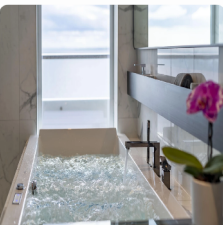


Scenic Eclipse Veranda Suite A, Deck 8

	<p><i>Doppelbelegung</i></p> <p></p> <p>Nicht verfügbar</p>	<p><i>Einzelbelegung</i></p> <p></p> <p>Nicht verfügbar</p>
--	--	--

Scenic Eclipse Veranda Suite C, Deck 6

	<p><i>Doppelbelegung</i></p> <p></p> <p>Nicht verfügbar</p>	<p><i>Einzelbelegung</i></p> <p></p> <p>Nicht verfügbar</p>
---	--	--

Scenic Eclipse Spa Suite SA, Deck 9

	<p><i>Doppelbelegung</i></p> <p></p> <p>Nicht verfügbar</p>	<p><i>Einzelbelegung</i></p> <p></p> <p>Nicht verfügbar</p>
---	--	--

Scenic Eclipse Two-Bedroom Penthouse Suite TP, Deck 9



Doppelbelegung



Nicht verfügbar

Einzelbelegung



Nicht verfügbar

Scenic Eclipse Deluxe Veranda Suite DB, Deck 5



Doppelbelegung



Nicht verfügbar

Einzelbelegung



Nicht verfügbar

Scenic Eclipse Veranda Suite D, Deck 5



Doppelbelegung



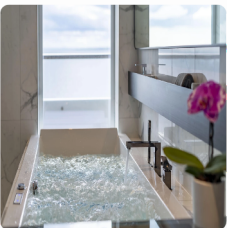
Nicht verfügbar

Einzelbelegung



Nicht verfügbar

Scenic Eclipse Spa Suite SB, Deck 9



Doppelbelegung



Nicht verfügbar

Einzelbelegung



Nicht verfügbar

Scenic Eclipse Veranda Suite B, Deck 7



Doppelbelegung



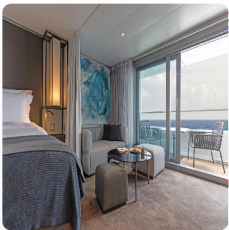
Nicht verfügbar

Einzelbelegung



Nicht verfügbar

Scenic Eclipse Grand Deluxe Veranda Suite DD, Deck 5



Doppelbelegung



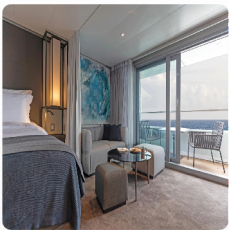
Nicht verfügbar

Einzelbelegung



Nicht verfügbar

Scenic Eclipse Grand Deluxe Veranda Suite BD, Deck 7



Doppelbelegung



Nicht verfügbar

Einzelbelegung



Nicht verfügbar

Scenic Eclipse Deluxe Veranda Suite BA, Deck 7



Doppelbelegung





Nicht verfügbar

Einzelbelegung



Nicht verfügbar

Scenic Eclipse Deluxe Veranda Suite DA, Deck 5

	<p><i>Doppelbelegung</i></p> <p></p> <p>Nicht verfügbar</p>	<p><i>Einzelbelegung</i></p> <p></p> <p>Nicht verfügbar</p>
---	--	--



Copenhagen, Denmark

Tag 1

Your Arctic expedition begins in Copenhagen, Scandinavian stylish capital. Stroll along picturesque canals, visit world-renowned museums, or simply soak in the atmosphere of this vibrant city.

Upon arrival, you'll be greeted and transferred to your luxury hotel, where you can unwind before the incredible journey ahead. Spend the evening indulging in Copenhagen's renowned culinary scene or take a leisurely walk through the historic streets as you anticipate the extraordinary voyage to come.

Copenhagen Denmark > Kangerlussuaq, Greenland

After breakfast, board your flight to Kangerlussuaq, Greenland, where your ultra-luxury Discovery Yacht awaits.

Tag 2

The Captain and crew of Scenic Eclipse will welcome you on board your new home with a glass of Champagne. With only up to 200 guests on board, you'll experience an immersive, engaging cruise through this fascinating part of the world.

Connect with fellow guests and the Discovery Team—specialists whose vast knowledge and expertise will enrich your understanding of the destinations you visit. From geology and marine biology to history and ecology, their insights are as captivating as their unique backstories.

Sisimiut

Tag 3

Greenland's second-largest town, Sisimiut is named after the fox dens that dot its landscape. Its charming streets, lined with colourful houses, lead to vast backcountry areas ripe for exploration. Beyond the town's tranquil facade lies a playground for outdoor enthusiasts, offering hiking trails, kayaking routes, and wildlife encounters. Dive into the town's cultural heritage through museums and cultural centres, discovering rich Inuit traditions and early settlers' legacies.

Scenic Discovery:

Weather permitting, explore by Zodiac, kayak, submersible[^], helicopter[^], or join the Discovery Team on nature hikes.

Ilulissat

Tag 4

Wake up in Ilulissat, the "Iceberg Capital of the World." Home to the World Heritage-listed Ilulissat Icefjord, this stunning region showcases some of the most dramatic glacial landscapes on Earth. Formerly known as Jakobshavn, this town is famed for the spectacle of icebergs breaking away from the glacier, a sight emphasised by the rumbling sounds of calving ice from the Sermeq Kujalleq Glacier. Witnessing this natural phenomenon is a mesmerising experience, offering a glimpse into the dynamic beauty of Greenland.

Scenic Discovery:

Weather permitting, explore by Zodiac, kayak, or go onshore to explore.

Disko Bay Cruising

Tag 5

Today, we'll cruise through the awe-inspiring Disko Bay, renowned for its stunning natural beauty. Pristine icebergs shimmer in the Arctic sunlight, while majestic glaciers carve their path through the dramatic landscape.

Take in the breathtaking views from the Observation Terrace or your private verandah, where you can fully appreciate the grandeur of this incredible region.

Evighed Fjord / Eternity Glacier

Tag 6

Glide through Evighed Fjord, aptly named "Eternity Fjord" for its endless panoramas of snow-draped peaks and dazzling glaciers, it's considered one of the most beautiful in Greenland. Stretching for more than 75 kilometres, you'll be awed by the endless fields of ice glittering under the sun. Tall, jagged peaks threaded with glaciers rise straight up out of the calm blue waters. Many of the glaciers are very active and you will likely hear chunks of ice calving away and collapsing loudly into the ocean. In Evighed Fjord, you will feel the beauty and power of nature all around you.

Scenic Discovery:

Weather permitting, embark on Zodiac excursions with the expert Discovery Team and take in the breathtaking landscapes.

At Sea

Start your day with freshly squeezed juice, a steaming barista-made coffee, or tea delivered to your door by your butler. Today is the perfect opportunity to relax and unwind as we sail across the Davis Strait toward the Canadian Arctic.

Tag 7

Take part in a wellness class at PURE: Yoga & Pilates Studio or indulge in a massage# at the Senses Spa. The Discovery Team's engaging lectures will share invaluable insights and foster a deeper connection to this extraordinary environment.

Enjoy tonight's entertainment at the state-of-the-art theatre before you retreat to your ultra-luxury suite. Alternatively choose to dine in the comfort of your suite and have your evening nightcap brought by your own butler, choosing from a premium collection of wines, beers and spirits.

Iqaluit, Baffin Island, Canada

Tag 8

Welcome to Baffin Island, the fifth-largest island in the world and the Jewel of the Canadian High Arctic. This remarkable destination is home to stunning fjords, ice-capped mountains, and a thriving Inuit community. In Iqaluit, the cultural heart of Nunavut, explore traditional arts and crafts markets, visit the Nunatta Sunakkutaangit Museum and meet the Inuit people, an integral part of Iqaluit, a remote community at the head of Frobisher Bay.

Tonight, dine around the world with your Discovery Yacht's extraordinary dining experiences, such as Sushi @ Koko's or fine French cuisine at Lumière (both available by on board reservation).

Monumental Island > Lady Franklin Island

Today, witness Arctic wildlife at two of Canada's most remote and pristine islands. We'll visit Monumental Island, a renowned haven for walrus. Explore the shoreline by Zodiac, keeping an eye out for these fascinating creatures. There's also a chance to spot polar bears from a respectful distance.

Tag 9

Later, we'll arrive at Lady Franklin Island, best known for its huge vertical cliffs of Archean rock, a breathtaking gem along the rugged, wildlife-rich southern coast of Baffin Island.

With expert guidance from the Discovery Team, you'll uncover exclusive insights into the captivating wildlife and geological wonders that make this destination truly unforgettable.

Scenic Discovery:

Based on the weather conditions, your Captain and Discovery Team will map out the optimal sites and activities to explore.

Lower Savage Islands

Tag 10

At the southeast tip of Baffin Island, you'll find the Lower Savage Islands. A labyrinth of rugged channels and towering cliffs, these islands are a sanctuary for Arctic wildlife. Their rocky terrain is home to polar bears, Arctic foxes, walrus, and seals, as well as thriving seabird colonies. A maze of channels winds through the islands, offering outstanding Zodiac cruising opportunities.

Scenic Discovery:

Based on the weather conditions, your Captain and Discovery Team will map out the optimal sites and activities to explore.

At Sea

After days of exploration, spend time relaxing in your spacious suite. A Sea Day aboard your Discovery Yacht provides the perfect opportunity to relax, enjoy the Sense Spa# and socialise with fellow guests.

Tag 11

The Observation Lounge and Terrace occupies a commanding position at the bow of the ship on Deck 5 and is the perfect place for a specialty tea or coffee while reading a book, playing a board game and watching the world float by. If you're looking for some quiet reflection or a bit of respite, nestle into one of the cabanas on Deck 10. With a freshly squeezed juice or a refreshing spritz depending on your mood, enjoy the expansive sea views with your complimentary binoculars found in your suite.

Our Discovery Team will captivate you with insightful talks on the local wildlife and history.

Join them on deck as we navigate the icy, fast-moving waters of the Hudson Strait, a vital waterway connecting Hudson Bay to the Atlantic Ocean. Known for its stunning landscapes and challenging currents, this stretch of water offers a unique opportunity to experience the raw beauty and power of the Arctic.

Kinngait (Cape Dorset), Baffin Island, Canada

Tag 12

Located in the stunning Canadian Arctic Archipelago on southwestern Baffin Island, this remarkable destination has been home to the Inuit for thousands of years. Today, it thrives as a world-renowned centre of creativity, where skilled artisans and craftspeople bring the Arctic's spirit to life through their exceptional artistry.

Check your Daily Program for today's scheduled activities in Cape Dorset.

At Sea

Tag 13

Start your day with a fitness class, followed by a refreshing soak in the heated Vitality pool. After your invigorating start, treat yourself by calling your butler to deliver breakfast to your room.

As you sail through the vast expanse of Hudson Bay, keep an eye out for beluga whales, which thrive in its waters. This incredible region, known for its rich marine life, is also home to a variety of Arctic wildlife. While navigating its serene yet rugged waters, you might catch a glimpse of these graceful creatures as they swim alongside the ship, making for an unforgettable experience.

At Sea

Tag 14

Today could be the day you visit the bridge where the Captain's open bridge policy welcomes guests to discover more about the technical capabilities of The World's First Discovery Yacht and see it in full operation. Plus, it's one of the best spots on the ship for taking in stunning views.

On the second day of sailing through Hudson Bay, the world's second-largest bay, you'll experience a sanctuary for Arctic wildlife. The waters are teeming with seals, and whales can appear at any time, while millions of seabirds fill the skies, making it a true paradise for nature lovers.

Churchill, Canada

Tag 15

Located on the shores of Hudson Bay, Churchill is the "polar bear capital of the world." With rugged streets and vast, sweeping landscapes, there's a sense of being at the edge of the world. Surrounded by the untamed beauty of the northern wilderness, the stark solitude and endless expanses make this remarkable destination truly captivating.

This charming town offers a variety of exciting activities—be sure to check the daily program for the scheduled activities.

In the evening, share stories with your new friends over dinner in one of up to 10 all-inclusive dining experiences on board your Discovery Yacht.

Churchill, Canada > Toronto

Tag 16

After a final gourmet breakfast, bid farewell to the Arctic as you board your flight to Toronto for an overnight stay. This marks the end of your incredible voyage through Greenland and the Canadian Arctic—but the memories of icebergs, unique wildlife and untouched wilderness will stay with you forever.

Toronto, Canada

After your expedition voyage, unwind with an overnight stay in Toronto. After breakfast, join the included transfer to the airport, marking the perfect conclusion to your unforgettable journey.

Tag 17

#Senses Spa treatments and services at additional cost. Daily activities may be subject to change; please consult your Daily Wonder for updates. +All drinks on board, including those stocked in your mini bar, are included, except for a very small number of rare, fine and vintage wines, Champagnes and spirits. Specialty restaurants require a reservation, enquire on board. ^Helicopter and submersible excursions at additional cost and subject to regulatory approval, availability, weight restrictions, medical approval and weather conditions.

Helicopter and Submersible are not operational in Canada and Greenland.

The itinerary is a guide only and may be amended for operational reasons. As such Scenic cannot guarantee the voyage will operate unaltered from the itinerary stated above. Please refer to our terms and conditions for further information.

Im Preis inbegriffen

- Services und Annehmlichkeiten an Bord
- Maximal 229 Gäste an Bord (200 in den Polarregionen)
- Großzügige Suiten mit privater Veranda 2:1-Verhältnis
- Gäste- und Butlerservice für jeden Gast
- Zehn kulinarische Erlebnisse in neun Gourmet-Menues – von gemütlicher Atmosphäre bis zum eleganten Fine Dining
- Auswahl an Premium-Markengetränken mit über 101 Whiskysorten
- Scenic Discovery Ausflüge mit dem Zodiac
- Komplettes Kajakprogramm und Stand-up-Paddle-Boarding
- Kostenloser Expeditionsparaka und Wasserflasche sowie die Nutzung von speziellen Polartiefeln
- Interessantes Vortrags- und Bildungsprogramm mit Experten an Bord
- Spezielle Observation Lounge und Terrasse für die beste Aussicht
- Swarovski-Teleskope an Deck sowie Ferngläser in der Suite, damit Sie keinen aufregenden Momente verpassen
- Senses Spa** auf 551 m² mit Fitnesscenter, Yoga- und Pilatesstudio
- Außen-Vitalpools nachskandinavischem Vorbild
- Modernes Theater mittäglichem Unterhaltungs- und Bildungsangebot
- WLAN inclusive
- Inlandsflüge inkl. Gebühren
- Flughafentransfers
- Trinkgelder an Bord und an Land

Nicht im Preis inbegriffen

- Internationale Flüge, sofern nicht angegeben
- Reiseversicherungen
- Visa- oder Passgebühren (falls erforderlich)
- persönliche Ausgaben (Einkäufe, optionale Ausflüge)
- sonstige im Programm nicht genannte Leistungen

Ihr Schiff

Ihr Schiff ist die "Scenic Eclipse". Ausführlich stellen wir Ihnen dieses Schiff auf unseren Schiffseiten vor. [Ausführliche Informationen zu diesem Schiff.](#)

Passagiere
199

Bordsprachen


Eisklasse
PC-6

Special
Helikopter

