

IHRE REISE

*Grand Voyage: Entdeckungsreise in  
 die Arktis von Reykjavik nach  
 New York*

Reisetermin

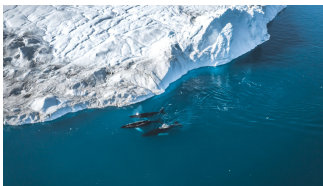
04.08.2027 - 27.09.2027

Reisedauer

55 Tage

Reederei / Schiff

Scenic Eclipse / SCENIC Luxury Cruises & Tours



Scenic Eclipse Veranda Suite A, Deck 8



Doppelbelegung



**€ 61.365**

pro Person

Einzelbelegung



**€ 140.355**

pro Person

Scenic Eclipse Deluxe Veranda Suite CA, Deck 6



Doppelbelegung



**€ 62.715**

pro Person

Einzelbelegung



**€ 143.055**

pro Person

Scenic Eclipse Deluxe Veranda Suite AA, Deck 7



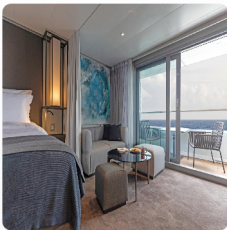
*Doppelbelegung*

  
**€65.145**  
 pro Person

*Einzelbelegung*

  
**€174.915**  
 pro Person

Scenic Eclipse Grand Deluxe Veranda Suite CD, Deck 6



*Doppelbelegung*

  
**€68.655**  
 pro Person

*Einzelbelegung*

  
**€154.935**  
 pro Person

Scenic Eclipse Panorama Suite P, Deck 8



*Doppelbelegung*

  
**€153.165**  
 pro Person

*Einzelbelegung*

  
**€323.955**  
 pro Person

Scenic Eclipse Grand Panorama Suite GP, Deck 6



*Doppelbelegung*

  
**€156.405**  
 pro Person

*Einzelbelegung*

  
**€330.435**  
 pro Person

Scenic Eclipse Spa Suite SA, Deck 9



*Doppelbelegung*



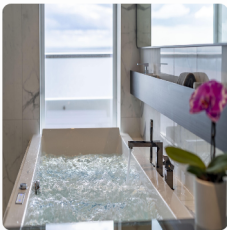
Nicht verfügbar

*Einzelbelegung*



Nicht verfügbar

Scenic Eclipse Spa Suite S, Deck 8



*Doppelbelegung*



Nicht verfügbar

*Einzelbelegung*



Nicht verfügbar

Scenic Eclipse Owners Penthouse Suite OP, Deck 9



*Doppelbelegung*



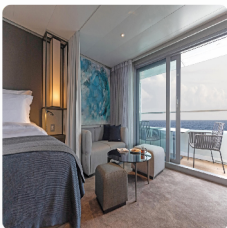
Nicht verfügbar

*Einzelbelegung*



Nicht verfügbar

Scenic Eclipse Grand Deluxe Veranda Suite AD, Deck 8



*Doppelbelegung*



Nicht verfügbar

*Einzelbelegung*



Nicht verfügbar

Scenic Eclipse Veranda Suite C, Deck 6



*Doppelbelegung*



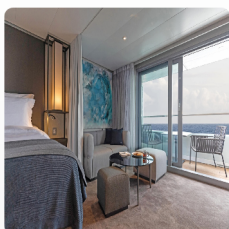
Nicht verfügbar

*Einzelbelegung*



Nicht verfügbar

Scenic Eclipse Grand Deluxe Veranda Suite BD, Deck 7



*Doppelbelegung*



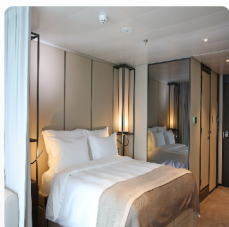
Nicht verfügbar

*Einzelbelegung*



Nicht verfügbar

Scenic Eclipse Veranda Suite B, Deck 7



*Doppelbelegung*



Nicht verfügbar

*Einzelbelegung*



Nicht verfügbar

Scenic Eclipse Veranda Suite D, Deck 5



*Doppelbelegung*



Nicht verfügbar

*Einzelbelegung*



Nicht verfügbar



Scenic Eclipse Deluxe Veranda Suite BA, Deck 7



*Doppelbelegung*



Nicht verfügbar

*Einzelbelegung*



Nicht verfügbar

Scenic Eclipse Deluxe Veranda Suite DB, Deck 5



*Doppelbelegung*



Nicht verfügbar

*Einzelbelegung*



Nicht verfügbar

Scenic Eclipse Spa Suite SB, Deck 9



*Doppelbelegung*



Nicht verfügbar

*Einzelbelegung*



Nicht verfügbar

Scenic Eclipse Two-Bedroom Penthouse Suite TP, Deck 9



*Doppelbelegung*



Nicht verfügbar

*Einzelbelegung*



Nicht verfügbar

Scenic Eclipse Grand Deluxe Veranda Suite DD, Deck 5



Doppelbelegung



Nicht verfügbar

Einzelbelegung



Nicht verfügbar

Scenic Eclipse Deluxe Veranda Suite DA, Deck 5



Doppelbelegung

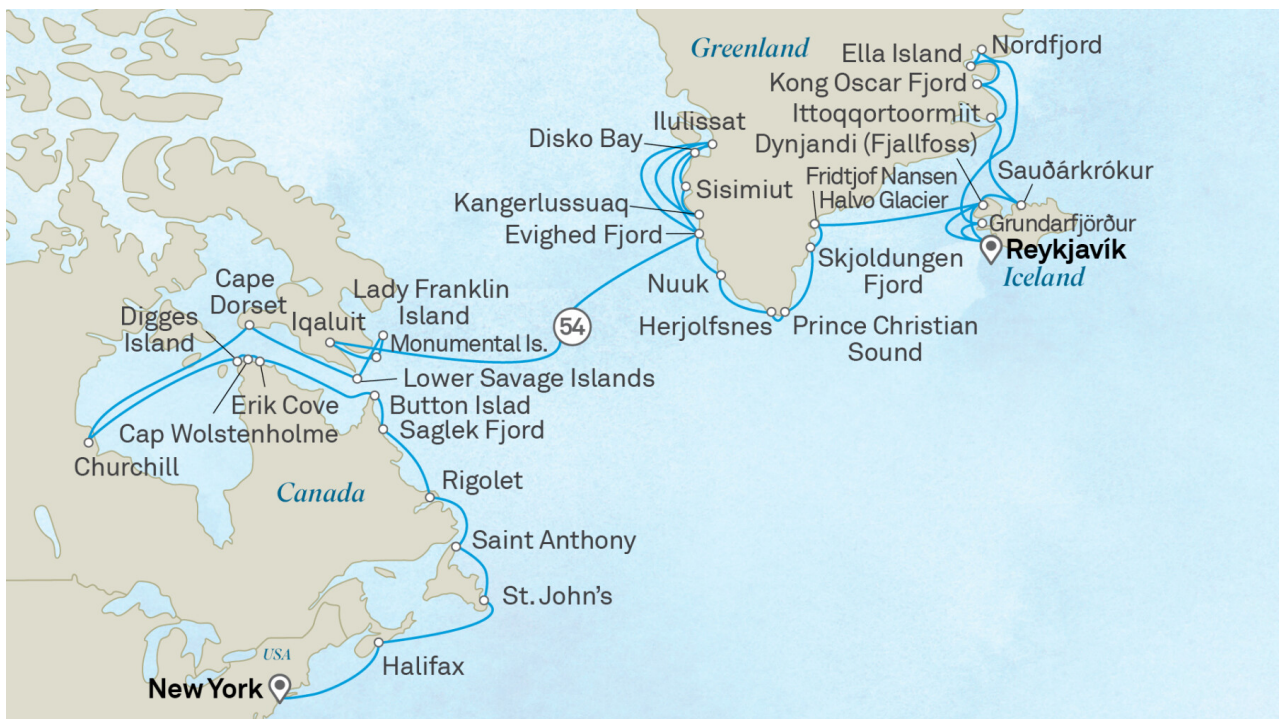


Nicht verfügbar

Einzelbelegung



Nicht verfügbar



## Reykjavík, Iceland

Welcome to Reykjavík, the world's northernmost capital city. Your journey begins here in Iceland's unique and imaginative spirit.

Tag 1

This afternoon, you'll meet the Captain and crew of your ultra-luxury Discovery Yacht, Scenic Eclipse. Be welcomed on board with a glass of Champagne and explore your spacious suite. Meet your fellow guests for a drink in the Scenic Lounge as you toast to the start of an unforgettable journey.

Please book your flight to arrive into Reykjavik prior to 02:00 PM.

## Flatey Island

Tag 2

Flatey island, is a privately owned island nestled amidst the breathtaking landscapes of Iceland's northwest coast. The wooden houses on this remote outcrop were built over 100 years ago but are so well-preserved you'll feel as though you've stepped into the past. Just a couple of farmers live here now, surrounded by pristine beaches and this charming village frozen in time.

### Scenic Discovery:

Weather permitting, join the Discovery Team on Zodiac and kayak excursions to further explore the Island.

## Dynjandivogur Waterfall > Cruising Dýrafjörður

Tag 3

Weather permitting, this morning you will visit the jewel of the Westfjords, Dynjandi Waterfall. Feel the cold mist on your face as you admire the cascading bridal veil falls and discover why it was nicknamed 'the thunder'. Tumbling down seven tiers over 100 metres, it is one of the most beautiful waterfalls in Iceland.

Tonight, choose from up to 10 world-class on board dining experiences. Perhaps make this the evening you try Koko's Asian Fusion, a culinary celebration of Asia's diverse flavours.

## Vigur Island

Tag 4

Welcome to Vigur Island, a private island oasis off Iceland's coast and just below the Arctic Circle. The island has a history dating to the 11th century and is a time capsule of Icelandic heritage, boasting charming buildings and traditional farming for eiderdown.

Vigur Island is also designated as an internationally important seabird habitat, where you may see some of the 7,000 breeding eider ducks, 100,000 puffins, nesting Arctic terns and Europe's largest colony of black guillemot. There's also a seal colony and passing whales, making this a remote wildlife sanctuary.

## Sauðárkrókur > Sail across the Arctic Circle

Tag 5

The friendly town of Sauðárkrókur is located in a fertile valley along the south-western shore of Skagafjörður Fjord. It's the largest town in northwest Iceland, though is home to just over 2,500 people. The charming downtown will welcome you as you stroll through the small collection of distinctive, traditional buildings where the past seems to be brought back to life.

This afternoon, your Discovery Yacht will cross the Arctic Circle. Be sure to find yourself a good vantage point for this awe-inspiring occasion. Although the line is invisible, the surrounding scenery provides stunning atmosphere.

## At Sea > Ittoqortoormit, Greenland

Tag 6

Nestled beside the world's largest and deepest multi-branched fjord system, Ittoqortoormiit stands as one of Greenland's most remote towns. Home to approximately 350 residents, this small community offers a fascinating insight into the traditional Inuit way of life. Here, people have embraced a sea-dependent existence, where the ever-changing sea ice opens new opportunities for exploration.

Immerse yourself in the community's resilience with a guided tour. Explore key landmarks such as the museum, church, weather station, and public service building. Enjoy the chance to have your passport stamped in this unique destination, adding a unique touch to your visit.

### Scenic Discovery:

Weather permitting, join the Discovery Team on Zodiac excursions, explore by kayak or enjoy shore landings.

## Cruising Kong Oscar Fjord

Tag 7

King Oscar Fjord, located at the northern border of the Scoresby Land peninsula, offers stunning views with its many side arms. Cruising through this fjord in Northeast Greenland National Park offers an ideal vantage point to witness dramatic landscapes, glaciers, and wildlife.

Tonight, meet new friends in one of the all-inclusive bars and lounges and reflect on the journey so far. Shared travel experiences can forge lifelong friendships, especially in a destination as spectacular as the Arctic Circle.

Experience the midnight sun in Greenland's far north by sailing overnight through King Oscar Fjord and Kejser Franz Fjord.

### Scenic Discovery:

Weather permitting, join the Discovery Team on Zodiac excursions.

## Ella Island

Tag 8

Ella Island, where five iceberg-filled fjords converge, is a true gem of Greenland's wild beauty. As the home of the legendary Sirius Dog Sled Patrol, it boasts one of the most awe-inspiring views on the planet. Picture vibrant red buildings nestled at the base of towering 1,350-metre (4,400-foot) cliffs—an almost otherworldly scene that must be experienced to be believed.

Perhaps take a moment this afternoon to unwind in your suite. Ask your butler to deliver your preferred beverage and curl up with a book or simply enjoy the incredible views beyond your private verandah.

### Scenic Discovery:

Weather permitting, join the Discovery Team on Zodiac excursions, explore by kayak or enjoy shore landings.

## Nordfjord

Tag 9

The Nordfjord reaches a breathtaking climax at the majestic Waltershausen Glacier, the largest glacier cascading from the Greenland Ice Sheet. Dark streaks trace mesmerizing patterns across the glacier's towering face and its sculpted icebergs. Your Zodiac excursion will take you to explore enchanting ice caves, where you'll witness the thrilling spectacle of ice fragments breaking free and plunging into the shimmering waters below—a truly unforgettable Arctic experience.

If weather conditions permit, get ready for the exhilarating rush of a polar plunge. It's an electrifying and refreshing adventure that will stay with you for years to come.

### Scenic Discovery:

Weather permitting, join the Discovery Team on Zodiac excursions.

## At Sea

- After a couple of active days on shore, today would be a good time for some relaxation. The indulgent Senses Spa# awaits on Deck 6. The expansive 550sqm facilities are unlike anything you've experience at sea.
- Tag 10 Find a spot in one of our observation lounges and enjoy the spectacular surrounding landscapes.
- During the day, our specialist Discovery Team will present informative and entertaining talks about the region that you're travelling through. Don't forget to check the Daily Program on your TV for timing—you won't want to miss these inspiring sessions!
- Tonight, dine around the world with Scenic Eclipse's extraordinary dining experiences, such as Sushi @ Koko's or fine French cuisine at Lumière (both available by on board reservation).

## Grundarfjörður, Iceland

- Tag 11 Nestled within the breathtaking landscapes of the Snæfellsnes Peninsula, Grundarfjörður exudes charm with its quaint fishing village atmosphere and vibrant, colourful houses. As you wander its winding streets, you'll be captivated by the picturesque scenery at every turn.
- Dominating the skyline is the iconic Kirkjufell, affectionately known as Church Mountain, which stands as a majestic backdrop to this idyllic coastal community. Its distinctive silhouette, often shrouded in mist or bathed in the golden glow of sunset, has made it one of the most photographed mountains in all of Iceland, adding to the allure of this enchanting village.

## Reykjavik

- Tag 12 Today we arrive in Reykjavik, Iceland's vibrant capital. A captivating blend of natural beauty, rich history and modern Nordic charm. Surrounded by dramatic volcanic landscapes and the North Atlantic Ocean, the city offers a unique mix of colourful architecture, creative culture, and a welcoming atmosphere.

## Dynjandivogur Waterfall

- Tag 13 Today, prepare to feel freezing mist on your face as you admire the jewel of the Westfjords. Appropriately nicknamed 'the thunder' as it tumbles down seven tiers over 100 metres, Dynjandi Waterfall is one of the most beautiful waterfalls in Iceland. Weather permitting, marvel at nature's grandeur and keep an eye out for local wildlife as you sail through this remote corner of the country.

## Isafjörður

- Tag 14 Characterized by deep, blue fjords, separated by flat-topped mountains, Ísafjörður is the largest settlement in the Westfjords of Iceland. Explore remote Iceland from one of the most stunning towns in the country, with old timber framed houses and architecture. Bursting with a wealth of wildlife, keep your eyes peeled for birds and Arctic foxes on the cliffs, seals on the coast and whales cruising in the surrounding ocean.

## At Sea

- Tag 15 Enjoy a relaxing day at sea as you make your way west towards Greenland. Perhaps ask your butler to bring breakfast to your suite, to be enjoyed as you watch the icy ocean slip by from your private verandah. Then explore some of the indulgent spaces on board, from the welcoming Observation Lounge to the indulgent Senses Spa# with its sauna and heated therapy lounge.
- Join the experts from the Discovery Team for a lecture or talk about upcoming ports, then sit back with your favourite cocktail for an evening of entertainment in the state-of-the-art-theatre.

## Fridtjof Nansen Halvo Glacier

Tag 16

Unlike the rest of Greenland, the Sermersooq municipality (where the Fridtjof Nansen peninsula is located) is smooth and unbroken terrain. Here, the magnificent Greenland Ice Sheet flows right to the shore. The peninsula gets its name from famed explorer Fridtjof Nansen, who launched his pioneering Greenland venture from Umivik Bay. This 1888 expedition confirmed that Greenland was completely covered in ice.

Over the next seven days in Greenland, countless adventures await, from exhilarating whale watching to thrilling kayak excursions and invigorating polar plunges, promising unforgettable experiences.

## Skjoldungen Fjord

Tag 17

Glaciers calving, rivers flowing, towering rock walls and colourful forests - the Skjoldungen Fjord is spectacular. Look up to admire huge crevasses and freestanding pillars of ice standing silhouetted against the blue Greenland sky. On the lower slopes, Arctic wildflowers will bloom amongst the dwarf birch and willow trees. Join the Discovery Team on the Observation Deck as nimble Scenic Eclipse weaves through numerous icebergs in this narrow channel and learn about the archaeological remains that have been found in this region, suggesting people lived here over 4,000 years ago.

## Cruising Prince Christian Sound > Herjolfsnes

Tag 18

Carving a breathtaking, naturally formed path that separates the mainland from the islands of Cape Farewell, Prince Christian Sound is one of Greenland's most scenic waterways and a highlight of any cruise in the region. Over a hundred kilometers in length, and flanked by magnificent glaciers and granite cliffs, this narrow passage is only accessible during summer, when the largest ice blockades melt away.

With her elegant design and state-of-the-art technology, Scenic Eclipse brings you closer to the towering glaciers, icebergs and imposing peaks for unmissable photo opportunities.

## At Sea

Tag 19

After a restorative night of rest in your ultra-luxury suite, wake on your own time. The day is yours to spend exactly as you wish.

Take the time to acquaint yourself with the exceptional range of facilities on board your ultra-luxury Discovery Yacht. Each indoor and outdoor space has been carefully curated with you in mind. Relax and slow down to the rhythm of the ocean, perhaps using the complimentary binoculars in your suite to scan the horizon in search of whales.

## Nuuk

Tag 20

Clinging to a jagged peninsula on the southwest coast of Greenland, Nuuk is the island's capital and largest city. The area has been inhabited since 2200BC, though the present town was only established in 1728.

Nuuk's colourful wooden buildings are a visual standout on your guided tour of the Old Harbour. The picturesque site reveals history and traditions that remain strong today, making Nuuk a hub of modern Nordic culture. Discover innovative architecture inspired by the Northern Lights and restaurants showcasing local recipes and ingredients.

## Evighed Fjord

Tag 21

Enjoy a slow day cruising through Evighed Fjord, or 'Eternity Fjord', considered one of the most beautiful in Greenland. Stretching for more than 75 kilometres, you'll be awed by the endless fields of ice glittering under the sun. Tall, jagged peaks threaded with glaciers rise straight up out of the calm blue waters. Many of the glaciers are very active and you will likely hear chunks of ice calving away and collapsing loudly into the ocean. In Evighed Fjord, you'll feel the beauty and power of nature all around you.

## Disko Bay

Tag 22

Today, we arrive in the breathtaking Disko Bay, a true paradise for whales and Arctic wildlife. Here, shimmering icebergs of all shapes and sizes drift gracefully across the water, each one a stunning creation of the legendary Ilulissat Icefjord.

Stand in awe on the Observation Terrace or your private verandah, where you can marvel at the sheer grandeur of the surroundings.

### Scenic Discovery:

Weather permitting, explore with the Discovery Team by Zodiac, kayak, submersible^ or helicopter^.

## Ilulissat

Tag 23

Ilulissat is the main town on the Disko Bay, named from the Inuit word for 'iceberg'. It's famous for the large number of icebergs breaking away from the nearby Ilulissat Icefjord, a World Heritage-listed site. The Icefjord is the mouth of the vast Sermeq Kujalleq Glacier, one of the world's fastest moving and most active glaciers, calving a remarkable 46 cubic kilometers of ice annually. Listen for the rumbling sounds in the distance as huge chunks of ice break from the glacier and tumble into the water below.

## At Sea

Tag 24

After days of exploration, enjoy some much-needed relaxation as you cruise the waters of West Greenland today. Towering cliffs and serene waters create a mesmerizing backdrop as you graze the day away. Scenic Eclipse's all-inclusive premium beverages ensure you'll find something that suits your taste perfectly.

As this is your last full day on board, take some time for a dip in the temperature-controlled Vitality Pools, a treatment in the Senses Spa#, an aerial yoga class in the PURE: Yoga & Pilates studio or an exquisite tea in the Observation Lounge.

## Kangerlussuaq, Greenland

Tag 25

Kangerlussuaq is a stunning stop on your journey, offering a unique glimpse into Greenland's wild landscapes. With its dramatic scenery and proximity to the Greenland Ice Cap, it's a captivating way to experience the raw beauty of the Arctic.

## Sisimiut

Tag 26

Greenland's second-largest town, Sisimiut is named after the fox dens that dot its landscape. Its charming streets, lined with colourful houses, lead to vast backcountry areas ripe for exploration. Beyond the town's tranquil facade lies a playground for outdoor enthusiasts, offering hiking trails, kayaking routes, and wildlife encounters. Dive into the town's cultural heritage through museums and cultural centres, discovering rich Inuit traditions and early settlers' legacies.

### Scenic Discovery:

Weather permitting, explore by Zodiac, kayak, submersible^, helicopter^, or join the Discovery Team on nature hikes.

## Ilulissat

Tag 27

Wake up in Ilulissat, the "Iceberg Capital of the World." Home to the World Heritage-listed Ilulissat Icefjord, this stunning region showcases some of the most dramatic glacial landscapes on Earth. Formerly known as Jakobshavn, this town is famed for the spectacle of icebergs breaking away from the glacier, a sight emphasised by the rumbling sounds of calving ice from the Sermeq Kujalleq Glacier. Witnessing this natural phenomenon is a mesmerising experience, offering a glimpse into the dynamic beauty of Greenland.

### Scenic Discovery:

Weather permitting, explore by Zodiac, kayak, or go onshore to explore.



## Disko Bay Cruising

Tag 28

Today, we'll cruise through the awe-inspiring Disko Bay, renowned for its stunning natural beauty. Pristine icebergs shimmer in the Arctic sunlight, while majestic glaciers carve their path through the dramatic landscape.

Take in the breathtaking views from the Observation Terrace or your private verandah, where you can fully appreciate the grandeur of this incredible region.

## Evighed Fjord / Eternity Glacier

Tag 29

Glide through Evighed Fjord, aptly named "Eternity Fjord" for its endless panoramas of snow-draped peaks and dazzling glaciers, it's considered one of the most beautiful in Greenland. Stretching for more than 75 kilometres, you'll be awed by the endless fields of ice glittering under the sun. Tall, jagged peaks threaded with glaciers rise straight up out of the calm blue waters. Many of the glaciers are very active and you will likely hear chunks of ice calving away and collapsing loudly into the ocean. In Evighed Fjord, you will feel the beauty and power of nature all around you.

### Scenic Discovery:

Weather permitting, embark on Zodiac excursions with the expert Discovery Team and take in the breathtaking landscapes.

## At Sea

Tag 30

Start your day with freshly squeezed juice, a steaming barista-made coffee, or tea delivered to your door by your butler. Today is the perfect opportunity to relax and unwind as we sail across the Davis Strait toward the Canadian Arctic.

Take part in a wellness class at PURE: Yoga & Pilates Studio or indulge in a massage# at the Senses Spa. The Discovery Team's engaging lectures will share invaluable insights and foster a deeper connection to this extraordinary environment.

Enjoy tonight's entertainment at the state-of-the-art theatre before you retreat to your ultra-luxury suite. Alternatively choose to dine in the comfort of your suite and have your evening nightcap brought by your own butler, choosing from a premium collection of wines, beers and spirits.

## Iqaluit, Baffin Island, Canada

Tag 31

Welcome to Baffin Island, the fifth-largest island in the world and the Jewel of the Canadian High Arctic. This remarkable destination is home to stunning fjords, ice-capped mountains, and a thriving Inuit community. In Iqaluit, the cultural heart of Nunavut, explore traditional arts and crafts markets, visit the Nunatta Sunakkutaangit Museum and meet the Inuit people, an integral part of Iqaluit, a remote community at the head of Frobisher Bay.

Tonight, dine around the world with your Discovery Yacht's extraordinary dining experiences, such as Sushi @ Koko's or fine French cuisine at Lumière (both available by on board reservation).

## Monumental Island > Lady Franklin Island

Tag 32

Today, witness Arctic wildlife at two of Canada's most remote and pristine islands. We'll visit Monumental Island, a renowned haven for walrus. Explore the shoreline by Zodiac, keeping an eye out for these fascinating creatures. There's also a chance to spot polar bears from a respectful distance.

Later, we'll arrive at Lady Franklin Island, best known for its huge vertical cliffs of Archean rock, a breathtaking gem along the rugged, wildlife-rich southern coast of Baffin Island.

With expert guidance from the Discovery Team, you'll uncover exclusive insights into the captivating wildlife and geological wonders that make this destination truly unforgettable.

### Scenic Discovery:

Based on the weather conditions, your Captain and Discovery Team will map out the optimal sites and activities to explore.

## Lower Savage Islands

Tag 33

At the southeast tip of Baffin Island, you'll find the Lower Savage Islands. A labyrinth of rugged channels and towering cliffs, these islands are a sanctuary for Arctic wildlife. Their rocky terrain is home to polar bears, Arctic foxes, walrus, and seals, as well as thriving seabird colonies. A maze of channels winds through the islands, offering outstanding Zodiac cruising opportunities.

### Scenic Discovery:

Based on the weather conditions, your Captain and Discovery Team will map out the optimal sites and activities to explore.

## At Sea

Tag 34

After days of exploration, spend time relaxing in your spacious suite. A Sea Day aboard your Discovery Yacht provides the perfect opportunity to relax, enjoy the Sense Spa# and socialise with fellow guests.

The Observation Lounge and Terrace occupies a commanding position at the bow of the ship on Deck 5 and is the perfect place for a specialty tea or coffee while reading a book, playing a board game and watching the world float by. If you're looking for some quiet reflection or a bit of respite, nestle into one of the cabanas on Deck 10. With a freshly squeezed juice or a refreshing spritz depending on your mood, enjoy the expansive sea views with your complimentary binoculars found in your suite.

Our Discovery Team will captivate you with insightful talks on the local wildlife and history.

Join them on deck as we navigate the icy, fast-moving waters of the Hudson Strait, a vital waterway connecting Hudson Bay to the Atlantic Ocean. Known for its stunning landscapes and challenging currents, this stretch of water offers a unique opportunity to experience the raw beauty and power of the Arctic.

## Kinngait (Cape Dorset), Baffin Island, Canada

Tag 35

Located in the stunning Canadian Arctic Archipelago on southwestern Baffin Island, this remarkable destination has been home to the Inuit for thousands of years. Today, it thrives as a world-renowned centre of creativity, where skilled artisans and craftspeople bring the Arctic's spirit to life through their exceptional artistry.

Check your Daily Program for today's scheduled activities in Cape Dorset.

## At Sea

Tag 36

Start your day with a fitness class, followed by a refreshing soak in the heated Vitality pool. After your invigorating start, treat yourself by calling your butler to deliver breakfast to your room.

As you sail through the vast expanse of Hudson Bay, keep an eye out for beluga whales, which thrive in its waters. This incredible region, known for its rich marine life, is also home to a variety of Arctic wildlife. While navigating its serene yet rugged waters, you might catch a glimpse of these graceful creatures as they swim alongside the ship, making for an unforgettable experience.

## At Sea

Tag 37

Today could be the day you visit the bridge where the Captain's open bridge policy welcomes guests to discover more about the technical capabilities of The World's First Discovery Yacht and see it in full operation. Plus, it's one of the best spots on the ship for taking in stunning views.

On the second day of sailing through Hudson Bay, the world's second-largest bay, you'll experience a sanctuary for Arctic wildlife. The waters are teeming with seals, and whales can appear at any time, while millions of seabirds fill the skies, making it a true paradise for nature lovers.

## Churchill, Canada

Tag 38

Located on the shores of Hudson Bay, Churchill is the "polar bear capital of the world." With rugged streets and vast, sweeping landscapes, there's a sense of being at the edge of the world. Surrounded by the untamed beauty of the northern wilderness, the stark solitude and endless expanses make this remarkable destination truly captivating.

This charming town offers a variety of exciting activities—be sure to check the daily program for the scheduled activities.

In the evening, share stories with your new friends over dinner in one of up to 10 all-inclusive dining experiences on board your Discovery Yacht.

## Churchill

Tag 39

With extra time to enjoy Churchill's unique landscapes, wildlife and cultural heritage, be immersed in the spirit of this remote Arctic town. With its stunning landscapes and rich history, take the opportunity to discover more of what makes Churchill so unique.

## Churchill

Tag 40

Located on the shores of Hudson Bay, Churchill is famously known as the "polar bear capital of the world." With its rugged streets and vast, sweeping landscapes, offers a sense of being at the edge of the world. Surrounded by the untamed beauty of the northern wilderness, it's the stark solitude and endless expanses that make this remarkable destination truly captivating.

In the evening, share your travel notes with your new friends over dinner in one of up to 10 all-inclusive dining experiences on board your Discovery Yacht.

## At Sea

Tag 41

As Scenic Eclipse sails through Hudson Bay, start your day with a rejuvenating spa treatment or a guided stretch in the PURE: Yoga & Pilates Studio.

While navigating its serene yet rugged waters, you might catch a glimpse of a beluga whale, Arctic seal or the elusive polar bear as they swim alongside the ship, making for an unforgettable experience.

Join the evening recap, where the Discovery Leader will share exciting details about the upcoming days as your Discovery Yacht explores the Nunavut region.

Tonight, choose to dine in the comfort of your suite and have your evening nightcap brought by your butler.

## Digges Island, Nunavut, Canada

Tag 42

Where Hudson Strait meets the northeastern Hudson Bay, the remote Digges Islands rise with dramatic rocky cliffs, creating the perfect sanctuary for seabirds. This untamed wilderness is also home to thriving walrus colonies and the majestic polar bear. As we navigate the waters by zodiac, we'll keep watch for these incredible Arctic icons, always from a safe and respectful distance, but close enough for an unforgettable encounter.

### Scenic Discovery:

Weather permitting, embark on thrilling Zodiac excursions with the expert Discovery Team.

## Cap Wolstenholme, Nunavut > Erik Cove, Nunavut

Tag 43

Cap Wolstenholme, a striking stretch of cliffs along Nunavik's Hudson Strait, features a sheer, towering rampart on its western side. In summer, this dramatic headland transforms into a bustling nesting ground for swarms of thick-billed murre.

Sail to Erik Cove, surrounded by towering cliffs and floating icebergs, presenting a breathtaking and pristine landscape. Watch for seals, whales and a wide variety of seabirds in this wildlife haven. There's also the possibility of spotting polar bears.

### Scenic Discovery:

Both destinations are perfect for exploring by Zodiac, offering access to unique ecosystems and opportunities to observe Arctic wildlife in their natural habitats.

## At Sea

Tag 44

After a busy start to your Arctic journey, some relaxation could be on the menu today. Curl up with a book or your binoculars on the cabanas on Deck 10, join a Pilates class or guided stretching session in the PURE: Yoga & Pilates Studio, or enjoy a long lunch with new friends at Azure Bar & Cafe.

Join engaging lectures in the state-of-the-art theatre and be captivated by the expertise and enthusiasm of the Discovery Team as they share their profound knowledge and passion for this region, offering invaluable insights and fostering a deeper connection to this extraordinary environment.

## Hudson Strait, Nunavut

Tag 45

The strait from Hudson Bay to the Atlantic Ocean was navigated by Henry Hudson in 1610; today it bears his name. You'll trace his path between Baffin Island and Nunavik to a spectacular wildlife haven. The islands are teeming with bird species while the surrounding waters are full of marine mammals. You may spot polar bears, seals, walruses and whales during your visit to this thriving ecological hotspot. While the island's rugged cliffs are too harsh for humans, they offer an ideal nesting site for Murres, who build their homes on the narrow ledges.

### Scenic Discovery:

Weather permitting, embark on thrilling Zodiac excursions with the expert Discovery Team today. Paddle through serene waters by kayak or step ashore for an unforgettable exploration with your expert guides.

## Saglek Fjord, Newfoundland

Tag 46

Today, prepare for an unforgettable experience as your Discovery Yacht journeys through Saglek Fjord, a hidden Arctic paradise nestled in the rugged wilderness of Newfoundland. Known for its dramatic cliffs, pristine waters, and untouched landscapes, this remote fjord offers a unique opportunity to explore the raw beauty of Canada's northern coastline. Keep your eyes peeled for abundant wildlife, from playful seals to soaring seabirds, and immerse yourself in the natural splendour of one of the world's most pristine environments. This expedition is a true escape into nature.

## At Sea

Tag 47

Enjoy a day of pure ultra-luxury and breathtaking views as you sail the stunning Labrador Sea. Relax aboard your elegant Discovery Yacht, where the endless horizon meets the rugged beauty of the Arctic waters. Watch for wildlife as you glide through these pristine waters—spotting marine mammals, seabirds, and perhaps even the majestic icebergs that drift by.

Immerse yourself in captivating lectures at the state-of-the-art theatre, where the Discovery Team will share their expert knowledge and passion for the region. With their engaging insights, you'll gain a deeper understanding and connection to this extraordinary environment.

## Rigolet, Newfoundland

Tag 48

Experience the charm of Rigolet, a picturesque town with a deep Inuit heritage on Labrador's North coast. Engage with local artisans, learn about traditional craftsmanship. For wildlife lovers, this is a dream destination, and keep watch for wildlife, including whales and Arctic foxes, as you explore this fascinating region.

## Saint Anthony, Newfoundland

Tag 49

Nestled on Newfoundland's Great Northern Peninsula, St. Anthony is a charming town with a rich maritime heritage. It served as the base for the Grenfell Mission, established in the early 20th century to provide medical services to remote communities. The town's coastal waters are renowned for whale watching opportunities, offering sightings of majestic marine mammals during their migratory seasons. Additionally, the nearby L'Anse aux Meadows National Historic Site, a UNESCO World Heritage Site, marks the only known Norse village in North America, dating back to around 1000 AD.

## St. John's, Newfoundland

Tag 50

Welcome to St. John's, the vibrant capital of Newfoundland and Labrador, celebrated as North America's oldest city. Its downtown area is characterized by brightly coloured heritage buildings lining Water and Duckworth Streets, housing an array of boutiques, restaurants, and galleries. A visit to Signal Hill National Historic Site offers panoramic views of the city and harbour. This historic landmark is where Guglielmo Marconi received the first transatlantic wireless signal in 1901.

## At Sea

Tag 51

Enjoy a day of relaxation aboard your Discovery Yacht as you sail through the North Atlantic. Indulge in the 550sqm Senses Spa, reinvigorating your mind, body and soul. Pamper yourself with holistic ESPA treatments#, including massages and facials or experience alternative therapies such as Japanese shiatsu and Tibetan bowl sound healing. Engage in enriching lectures and discussions led by our expert Discovery Team, offering deeper insights into the regions visited and the natural wonders encountered.

## Halifax, Nova Scotia

Tag 52

Halifax, Nova Scotia's dynamic capital, has long been tied to the sea. It has one of the largest and deepest ice-free harbours in the world and has been an important military and commercial port for more than 250 years. Today, you can learn about its rich cultural heritage through the city's many museums and historical sites. Wander through bustling downtown streets and picturesque waterfronts, savouring maritime delights and charming cafes. A late departure gives you time to sample the city's famed live music scene, which takes over historic pubs and cosy venues every night of the week.

## At Sea

Tag 53

After days of exploration, spend time relaxing in your spacious suite. A sea day aboard your Discovery Yacht provides the perfect opportunity to relax, socialise with fellow guests and watch stunning environments pass by.

Visit the bridge, made accessible through the Captain's open bridge policy. Guests are welcome any time to learn more about the technical abilities of The World's First Discovery Yacht.

Make sure you book a treatment# at the tranquil Senses Spa before your expedition ends. Perhaps an ESPA facial or massage or an alternative therapy including Ayurvedic massage.

## New York, USA

Tag 54

Cruise past the iconic Statue of Liberty and the breathtaking Manhattan skyline as you cruise into New York. From the bright lights of Broadway to leafy Central Park and the glitzy boutiques of Fifth Avenue, the Big Apple is an unmissable experience.

Spend the afternoon exploring this global city. Walk the bustling streets of Lower Manhattan's financial district, the charming corners of Greenwich Village, and uncover New York's tapestry of culture, culinary delights, and architectural splendour. In the metropolis that never sleeps, there's something for everyone. Return for your final night on board your ultra-luxury Discovery Yacht.

## New York, USA

Tag 55

Your unforgettable Expedition Voyage ends today in New York City. Savour one last luxurious breakfast on board your 6-star Discovery Yacht before saying farewell to the crew and new friends who have shared this remarkable journey with you.

Please book your flight to depart out of New York City after 12:00 PM.

#Senses Spa treatments and services at additional cost. Daily activities may be subject to change; please consult your Daily Wonder for updates. +All drinks on board, including those stocked in your mini bar, are included, except for a very small number of rare, fine and vintage wines, Champagnes and spirits. Specialty restaurants require a reservation, enquire on board. ~Kayak and stand-up paddleboard not available in all locations. ^Flights on board our two helicopters and submersible experiences are at additional cost, subject to regulatory approval, availability, weight restrictions, medical approval and weather conditions.

**Helicopter not operational in Greenland and Canada. Submersible not operational in the US.**

The itinerary is a guide only and may be amended for operational reasons. As such Scenic cannot guarantee the voyage will operate unaltered from the itinerary stated above. Please refer to our terms and conditions for further information.

#### **Im Preis inbegriffen**

- Services und Annehmlichkeiten an Bord
- Maximal 229 Gäste an Bord (200 in den Polarregionen)
- Großzügige Suiten mit privater Veranda 2:1-Verhältnis
- Gäste- und Butlerservice für jeden Gast
- Zehn kulinarische Erlebnisse in neun Gourmet-Menues – von gemütlicher Atmosphäre bis zum eleganten Fine Dining
- Auswahl an Premium-Markengetränken mit über 101 Whiskysorten
- Scenic Discovery Ausflüge mit dem Zodiac
- Komplettes Kajakprogramm und Stand-up-Paddle-Boarding
- Kostenloser Expeditionsarka und Wasserflasche sowie die Nutzung von speziellen Polartiefeln
- Interessantes Vortrags- und Bildungsprogramm mit Experten an Bord
- Spezielle Observation Lounge und Terrasse für die beste Aussicht
- Swarovski-Teleskope an Deck sowie Ferngläser in der Suite, damit Sie keinen aufregenden Momente verpassen
- Senses Spa\*\* auf 551 m<sup>2</sup> mit Fitnesscenter, Yoga- und Pilatesstudio
- Außen-Vitalpools nachskandinavischem Vorbild
- Modernes Theater mittäglichem Unterhaltungs- und Bildungsangebot
- WLAN inclusive
- Inlandsflüge inkl. Gebühren
- Flughafentransfers
- Trinkgelder an Bord und an Land

---

#### **Nicht im Preis inbegriffen**

- Internationale Flüge, sofern nicht angegeben
- Reiseversicherungen
- Visa- oder Passgebühren (falls erforderlich)
- persönliche Ausgaben (Einkäufe, optionale Ausflüge)
- sonstige im Programm nicht genannte Leistungen



## Ihr Schiff

Ihr Schiff ist die "Scenic Eclipse". Ausführlich stellen wir Ihnen dieses Schiff auf unseren Schiffseiten vor. [Ausführliche Informationen](#) zu diesem Schiff.

Passagiere

199

Bordsprachen



Eisklasse

PC-6

Special

Helikopter

