




IHRE REISE

Spitzbergens Gletscher und Wildtiere



<p>Reisetermin</p> <p>09.07.2027 - 22.07.2027</p>	<p>Reisedauer</p> <p>14 Tage</p>	<p>Reederei / Schiff</p> <p>Scenic Eclipse / SCENIC Luxury Cruises & Tours</p>
--	---	---






Scenic Eclipse Veranda Suite A, Deck 8

	<p><i>Doppelbelegung</i></p> <p></p> <p>Nicht verfügbar</p>	<p><i>Einzelbelegung</i></p> <p></p> <p>Nicht verfügbar</p>
---	--	--

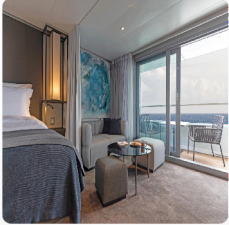
Scenic Eclipse Deluxe Veranda Suite CA, Deck 6

	<p><i>Doppelbelegung</i></p> <p></p> <p>Nicht verfügbar</p>	<p><i>Einzelbelegung</i></p> <p></p> <p>Nicht verfügbar</p>
---	--	--

Scenic Eclipse Deluxe Veranda Suite AA, Deck 7

	<p><i>Doppelbelegung</i></p> <p></p> <p>Nicht verfügbar</p>	<p><i>Einzelbelegung</i></p> <p></p> <p>Nicht verfügbar</p>
---	--	--

Scenic Eclipse Grand Deluxe Veranda Suite CD, Deck 6



Doppelbelegung



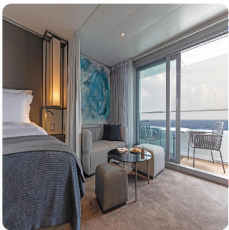
Nicht verfügbar

Einzelbelegung



Nicht verfügbar

Scenic Eclipse Grand Deluxe Veranda Suite AD, Deck 8



Doppelbelegung



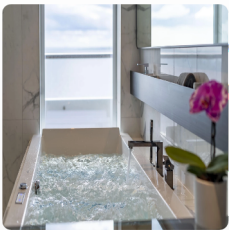
Nicht verfügbar

Einzelbelegung



Nicht verfügbar

Scenic Eclipse Spa Suite S, Deck 8



Doppelbelegung



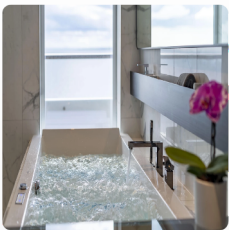
Nicht verfügbar

Einzelbelegung



Nicht verfügbar

Scenic Eclipse Spa Suite SA, Deck 9



Doppelbelegung



Nicht verfügbar

Einzelbelegung



Nicht verfügbar

Scenic Eclipse Panorama Suite P, Deck 8



Doppelbelegung



Nicht verfügbar

Einzelbelegung



Nicht verfügbar

Scenic Eclipse Grand Panorama Suite GP, Deck 6



Doppelbelegung



Nicht verfügbar

Einzelbelegung



Nicht verfügbar

Scenic Eclipse Owners Penthouse Suite OP, Deck 9



Doppelbelegung



Nicht verfügbar

Einzelbelegung



Nicht verfügbar

Scenic Eclipse Veranda Suite C, Deck 6



Doppelbelegung



Nicht verfügbar

Einzelbelegung



Nicht verfügbar

Scenic Eclipse Veranda Suite D, Deck 5



Doppelbelegung



Nicht verfügbar

Einzelbelegung



Nicht verfügbar

Scenic Eclipse Deluxe Veranda Suite BA, Deck 7



Doppelbelegung



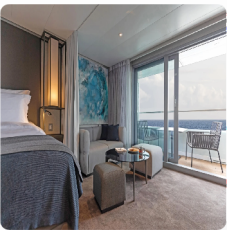
Nicht verfügbar

Einzelbelegung



Nicht verfügbar

Scenic Eclipse Grand Deluxe Veranda Suite BD, Deck 7



Doppelbelegung



Nicht verfügbar

Einzelbelegung



Nicht verfügbar

Scenic Eclipse Two-Bedroom Penthouse Suite TP, Deck 9



Doppelbelegung



Nicht verfügbar

Einzelbelegung






Nicht verfügbar

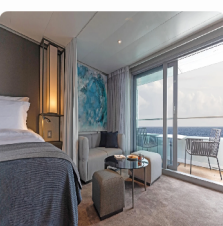

Scenic Eclipse Deluxe Veranda Suite DB, Deck 5

	<p><i>Doppelbelegung</i></p> <p></p> <p>Nicht verfügbar</p>	<p><i>Einzelbelegung</i></p> <p></p> <p>Nicht verfügbar</p>
---	--	--




Scenic Eclipse Deluxe Veranda Suite DA, Deck 5

	<p><i>Doppelbelegung</i></p> <p></p> <p>Nicht verfügbar</p>	<p><i>Einzelbelegung</i></p> <p></p> <p>Nicht verfügbar</p>
--	--	--

Scenic Eclipse Grand Deluxe Veranda Suite DD, Deck 5

	<p><i>Doppelbelegung</i></p> <p></p> <p>Nicht verfügbar</p>	<p><i>Einzelbelegung</i></p> <p></p> <p>Nicht verfügbar</p>
---	--	--

Scenic Eclipse Spa Suite SB, Deck 9

	<p><i>Doppelbelegung</i></p> <p></p> <p>Nicht verfügbar</p>	<p><i>Einzelbelegung</i></p> <p></p> <p>Nicht verfügbar</p>
---	--	--

Scenic Eclipse Veranda Suite B, Deck 7



Doppelbelegung

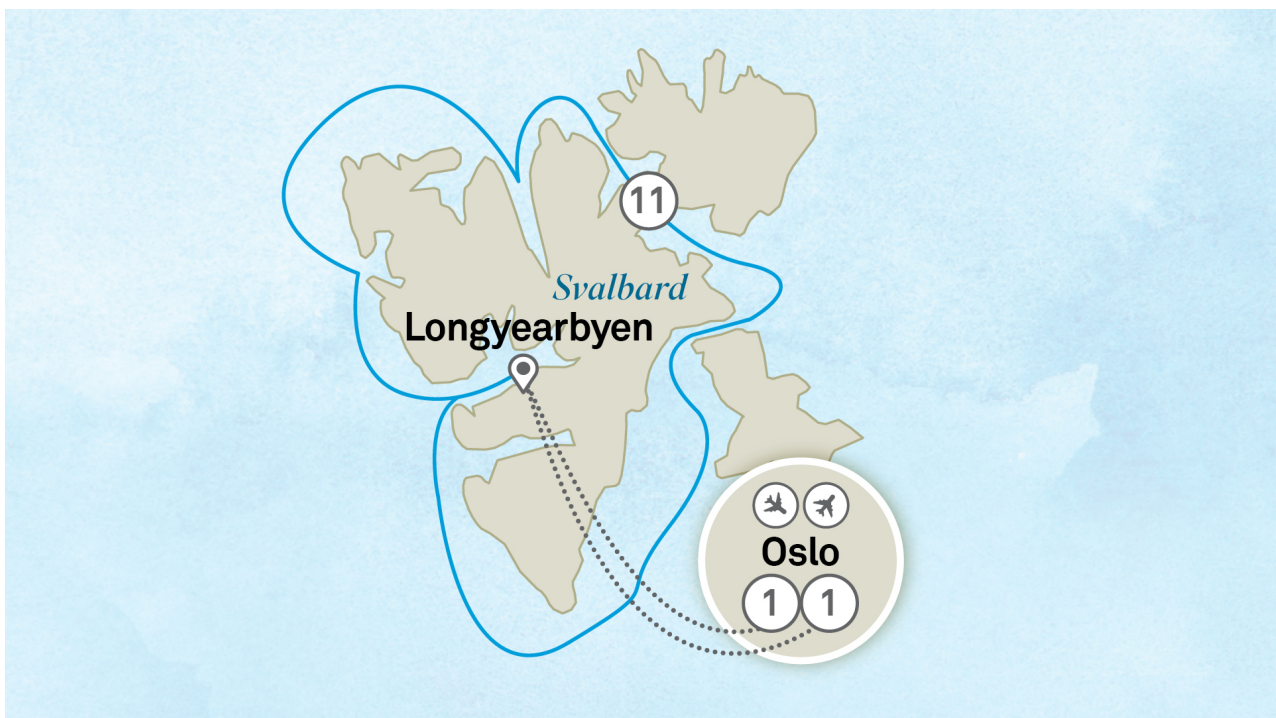


Nicht verfügbar

Einzelbelegung



Nicht verfügbar



Oslo, Norway

Tag 1

Welcome to the beautiful city of Oslo. The Norwegian capital is the smallest in Scandinavia and truly unique when it comes to cultural and nature-based experiences. Half of Oslo is covered in forest and parks and its cityscape is a melange of historical buildings and cutting-edge architecture, as well as outdoor sculptures and street art. The city is home to three famous museums honouring the rich nautical heritage of the Norse race and its warrior ancestors. Enjoy an overnight stay at your hotel.

Oslo > Longyearbyen

Tag 2

Today, you will fly from Oslo to Longyearbyen and explore into the Arctic Circle. The capital of the Norwegian Svalbard Archipelago, Longyearbyen is located on Svalbard's main island and is the northernmost territorial capital on the planet. The untouched landscapes make you feel like you're in completely unexplored territory.

Embark on the ultra-luxury Discovery Yacht, greeted with a glass of Champagne before being escorted to your suite, where the butler will welcome you and introduce the amenities of your luxurious suite. Later, meet your fellow guests for a drink in the Scenic Lounge Bar as you toast the start of an unforgettable journey.

Svalbard Archipelago

- Tag 3
- Welcome to the remote wilderness of the Svalbard Archipelago, a dramatic polar desert surrounded by rugged glaciers, frozen tundra, and craggy mountain peaks. Each day unveils a new breathtaking vista, from the dramatic contrast of tundra and volcanic islands sprinkled with lush greenery, to the occasional snow-capped peaks that emerge majestically from the landscape.
- Today, join an introductory presentation by the Discovery Team in the state-of-the-art theatre as they explain how your Zodiac and other Discovery excursions will work.
- From exciting landings to kayaking adventures, your Captain and Discovery Leader will select the best sites and activities based on the day's conditions.

Svalbard Archipelago

- Tag 4
- As you continue cruising around Svalbard, there may be opportunities to observe wildlife such as whales, Arctic foxes, seals, and seabirds. Be sure to keep the binoculars provided in your suite with you during your time on board or use the Swarovski telescopes in the Observation Lounge for a closer look at the Arctic wildlife. For wildlife photographers, we recommend bringing a telephoto lens for capturing distant wildlife.
- Tonight, choose from up to 10 world-class on board dining experiences. Perhaps make this the evening you try Koko's Asian Fusion, a culinary celebration of Asia's diverse flavours.
- Scenic Discovery:**
You will enjoy Discovery excursions by Zodiac, kayaking, and nature walks. Explore pristine locations and discover majestic Arctic scenery and tundra landscapes.

Svalbard Archipelago

- Tag 5
- Join the Captain on the bridge as we sail through an Arctic wonderland. See how ice and weather conditions can rapidly change plans before your eyes. The unpredictability of an Arctic voyage is all part of the journey and adds to the excitement for the guests and the crew.
- Spotting the Arctic's elusive wildlife might be a chance of luck, but thanks to the eagle-eyed, experienced crew, your chances are greatly increased on board Scenic Eclipse. You can also always look for the Discovery Team specialists to answer any questions you may have.
- Scenic Discovery:**
You will enjoy daily Discovery excursions by Zodiac, kayaking, and nature walks. Explore pristine locations and discover majestic Arctic scenery and tundra landscapes.

Svalbard Archipelago

- Tag 6
- Open the blackout curtains in your ultra-luxury suite to reveal the midnight sun and step onto your private verandah to take in the inspiring view. Each day reveals a captivating new vista, from majestic glaciers floating in iceberg-speckled waters to towering snow-capped mountains rising above the lush green slopes of the tundra.
- Listen out for the loud crack of a glacier calving as you soak in the scenery from the Observation Deck and keep your eyes peeled for movement on the ice and in the water.
- Scenic Discovery:**
Partake in daily Discovery excursions by Zodiac, kayaking, and nature walks. Explore pristine locations and discover majestic Arctic scenery and tundra landscapes.

Svalbard Archipelago

Tag 7

Continue cruising around the spectacular Svalbard Archipelago. When enjoying daily Discovery excursions, ask for the expert polar Discovery Team for photography tips and guidance. They will help you immortalise incredible moments while cruising on the Zodiacs and kayaking around impressive ice formations.

With up to 20 members including geologists, historians, ornithologists, marine biologists, and glaciologists, the Discovery Team is at the heart of your Expedition Voyage.

Svalbard Archipelago

Tag 8

For many, the polar plunge is an exhilarating rite of passage and while the day may change, your Discovery Team will always look for a special place to set up the Discovery Yacht's marina so that you can leap into the icy water below.

It's an invigorating and refreshing experience you'll talk about for years to come. If you'd rather watch, you can enjoy the fun with a cup of hot chocolate from one of the spacious viewing areas.

After the plunge, warm up with a drink of your choice or head to the infrared saunas in the Senses Spa.

Svalbard Archipelago

Tag 9

Start your day with a class in the PURE: Yoga & Pilates Studio. Alternatively, hit the fully equipped gym, where one-on-one fitness coaching sessions are available.

Afterwards, head to the deck to look for the natives of the Arctic skies. In the summer, Svalbard has over 30 species of birds including the Svalbard rock ptarmigan, puffins, skuas, little auks, kittiwakes, and black guillemots, whose feathers get whiter the farther north they are found.

Relax in the Observation Lounge, where you can read books and play board games in between birdwatching. In the evening, up to 10 extraordinary dining experiences await.

Scenic Discovery:

You will enjoy Discovery excursions by Zodiac, kayaking, and nature walks. Explore pristine locations and discover majestic Arctic scenery and tundra landscapes.

Svalbard Archipelago

Tag 10

Svalbard is a wildlife photographer's paradise, offering countless opportunities to capture the Arctic's untamed beauty. With its uninhabited and well-preserved ecosystem, this remote archipelago is one of the world's premier destinations for spotting wildlife amid breathtaking landscapes of towering mountains and glistening ice. With a full itinerary of spellbinding destinations, your photo opportunities are seemingly endless.

Back on board, warm up with a drink in one of your Discovery Yacht's nine all-inclusive bars and lounges. Sip France's best in Lumiere's Champagne Bar, an aged whiskey at Scenic Lounge Bar or a cocktail in your cabana beside the Sky Bar.

Scenic Discovery:

You will enjoy daily Discovery excursions by Zodiac, kayaking, and nature walks. Explore pristine locations and discover majestic Arctic scenery and tundra landscapes.

Svalbard Archipelago

The sound of ice cracking and popping may be disconcerting at first. By the end of your voyage, it could be one of your favourite sounds. Fall in love with all the shapes, colours and sounds of the environment around you.

Tag 11

Today, join the Discovery Team in Zodiac excursions around nature's floating ice sculptures. You may even see a Fata Morgana. These mirages look like ice cliffs in the distance, and you might find it hard to believe when your Discovery Team explains that they're just an optical illusion on the horizon.

Scenic Discovery:

You will enjoy in daily Discovery excursions by Zodiac, kayaking, and nature walks. Explore pristine locations and discover majestic Arctic scenery and tundra landscapes.

Svalbard Archipelago

Tag 12

As your unforgettable Svalbard voyage comes to a close, reflect on the incredible wildlife encounters, the awe-inspiring landscapes, and the vibrant tundra that made this expedition truly one-of-a-kind. From the fascinating geology of this remote wilderness to the exhilarating Zodiac and kayaking adventures, each moment has been a step into nature's untouched beauty. As you share stories and memories with newfound friends in the Observation Lounge or during a final dinner in one of our onboard restaurants, cherish the moments spent exploring this extraordinary Arctic haven. This is more than a journey—it's a collection of unforgettable memories.

Scenic Discovery:

You will enjoy in daily Discovery excursions by Zodiac, kayaking, and nature walks. Explore pristine locations and discover majestic Arctic scenery and tundra landscapes.

Longyearbyen > Oslo, Norway

Tag 13

After breakfast on board, it's time to say farewell to the crew who have shared this once-in-a-lifetime journey with you. As you disembark, share the highlights of your voyage in this spectacular part of the world with your new friends, knowing you have created memories to last a lifetime.

You will be transferred to Oslo for an overnight stay, the final part of your journey.

Oslo, Norway

Tag 14

After breakfast in your hotel, take the time to say goodbye to your fellow Arctic travellers.

As you fly out of Norway, treasure all the memories made on your voyage on board The World's First Discovery Yacht.

#Spa treatments at additional cost. +All drinks on board, including those stocked in your mini bar, are included, except for a very small number of rare, fine and vintage wines, Champagnes and spirits. Specialty restaurants require a reservation, enquire on board.

Helicopter and submersible are not operational in Svalbard.

The itinerary is a guide only and may be amended for operational reasons. As such Scenic cannot guarantee the voyage will operate unaltered from the itinerary stated above. Please refer to our terms and conditions for further information.

Im Preis inbegriffen

- Services und Annehmlichkeiten an Bord
- Maximal 229 Gäste an Bord (200 in den Polarregionen)
- Großzügige Suiten mit privater Veranda 2:1-Verhältnis
- Gäste- und Butlerservice für jeden Gast
- Zehn kulinarische Erlebnisse in neun Gourmet-Menues – von gemütlicher Atmosphäre bis zum eleganten Fine Dining
- Auswahl an Premium-Markengetränken mit über 101 Whiskysorten
- Scenic Discovery Ausflüge mit dem Zodiac
- Komplettes Kajakprogramm und Stand-up-Paddle-Boarding
- Kostenloser Expeditionsparaka und Wasserflasche sowie die Nutzung von speziellen Polartiefeln
- Interessantes Vortrags- und Bildungsprogramm mit Experten an Bord
- Spezielle Observation Lounge und Terrasse für die beste Aussicht
- Swarovski-Teleskope an Deck sowie Ferngläser in der Suite, damit Sie keinen aufregenden Momente verpassen
- Senses Spa** auf 551 m² mit Fitnesscenter, Yoga- und Pilatesstudio
- Außen-Vitalpools nachskandinavischem Vorbild
- Modernes Theater mittäglichem Unterhaltungs- und Bildungsangebot
- WLAN inclusive
- Inlandsflüge inkl. Gebühren
- Flughafentransfers
- Trinkgelder an Bord und an Land

Nicht im Preis inbegriffen

- Internationale Flüge, sofern nicht angegeben
- Reiseversicherungen
- Visa- oder Passgebühren (falls erforderlich)
- persönliche Ausgaben (Einkäufe, optionale Ausflüge)
- sonstige im Programm nicht genannte Leistungen

Ihr Schiff

Ihr Schiff ist die "Scenic Eclipse". Ausführlich stellen wir Ihnen dieses Schiff auf unseren Schiffseiten vor. [Ausführliche Informationen zu diesem Schiff.](#)

Passagiere
199

Bordsprachen


Eisklasse
PC-6

Special
Helikopter

