




IHRE REISE

Fjorde und Gletscher im Süden Chiles und Patagonien



<p>Reisetermin</p> <p>09.03.2028 - 26.03.2028</p>	<p>Reisedauer</p> <p>18 Tage</p>	<p>Reederei / Schiff</p> <p>Scenic Eclipse / SCENIC Luxury Cruises & Tours</p>
--	---	---




Scenic Eclipse Veranda Suite C, Deck 6

	<p>Doppelbelegung</p> <p></p> <p>17.110 € 16.080</p> <p>pro Person</p>	<p>Einzelbelegung</p> <p></p> <p>€ 40.835</p> <p>pro Person</p>
---	---	---

Scenic Eclipse Veranda Suite A, Deck 8

	<p>Doppelbelegung</p> <p></p> <p>18.230 € 16.080</p> <p>pro Person</p>	<p>Einzelbelegung</p> <p></p> <p>€ 43.075</p> <p>pro Person</p>
---	---	---

Scenic Eclipse Deluxe Veranda Suite CA, Deck 6

	<p>Doppelbelegung</p> <p></p> <p>19.190 € 17.780</p> <p>pro Person</p>	<p>Einzelbelegung</p> <p></p> <p>€ 44.995</p> <p>pro Person</p>
---	---	---

Scenic Eclipse Deluxe Veranda Suite AA, Deck 7



Doppelbelegung



~~20.870~~
€ 17.780

pro Person

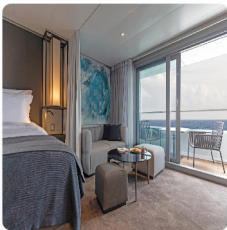
Einzelbelegung



€ 48.355

pro Person

Scenic Eclipse Grand Deluxe Veranda Suite CD, Deck 6



Doppelbelegung



~~21.910~~
€ 19.310

pro Person

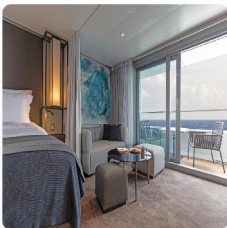
Einzelbelegung



€ 50.435

pro Person

Scenic Eclipse Grand Deluxe Veranda Suite AD, Deck 8



Doppelbelegung



~~22.630~~
€ 19.310

pro Person

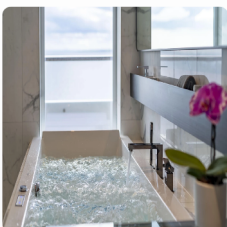
Einzelbelegung



€ 51.875

pro Person

Scenic Eclipse Spa Suite S, Deck 8



Doppelbelegung



~~27.750~~
€ 20.925

pro Person

Einzelbelegung



€ 62.115

pro Person

Scenic Eclipse Spa Suite SA, Deck 9



Doppelbelegung



~~28.070~~
€ 20.925

pro Person

Einzelbelegung



€ 62.755

pro Person

Scenic Eclipse Panorama Suite P, Deck 8



Doppelbelegung



~~46.950~~
€ 37.840

pro Person

Einzelbelegung



€ 100.515

pro Person

Scenic Eclipse Grand Panorama Suite GP, Deck 6



Doppelbelegung



~~47.910~~
€ 39.915

pro Person

Einzelbelegung



€ 102.435

pro Person

Scenic Eclipse Owners Penthouse Suite OP, Deck 9



Doppelbelegung



~~57.510~~
€ 44.640

pro Person

Einzelbelegung






€ 121.635

pro Person




Scenic Eclipse Deluxe Veranda Suite DB, Deck 5

	<p><i>Doppelbelegung</i></p> <p></p> <p>Nicht verfügbar</p>	<p><i>Einzelbelegung</i></p> <p></p> <p>Nicht verfügbar</p>
---	--	--



Scenic Eclipse Spa Suite SB, Deck 9

	<p><i>Doppelbelegung</i></p> <p></p> <p>Nicht verfügbar</p>	<p><i>Einzelbelegung</i></p> <p></p> <p>Nicht verfügbar</p>
--	--	--

Scenic Eclipse Deluxe Veranda Suite DA, Deck 5

	<p><i>Doppelbelegung</i></p> <p></p> <p>Nicht verfügbar</p>	<p><i>Einzelbelegung</i></p> <p></p> <p>Nicht verfügbar</p>
---	--	--

Scenic Eclipse Deluxe Veranda Suite BA, Deck 7

	<p><i>Doppelbelegung</i></p> <p></p> <p>Nicht verfügbar</p>	<p><i>Einzelbelegung</i></p> <p></p> <p>Nicht verfügbar</p>
---	--	--

Scenic Eclipse Two-Bedroom Penthouse Suite TP, Deck 9



Doppelbelegung



Nicht verfügbar

Einzelbelegung



Nicht verfügbar

Scenic Eclipse Veranda Suite D, Deck 5



Doppelbelegung



Nicht verfügbar

Einzelbelegung



Nicht verfügbar

Scenic Eclipse Veranda Suite B, Deck 7



Doppelbelegung



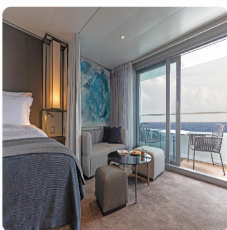
Nicht verfügbar

Einzelbelegung



Nicht verfügbar

Scenic Eclipse Grand Deluxe Veranda Suite BD, Deck 7



Doppelbelegung



Nicht verfügbar

Einzelbelegung



Nicht verfügbar

Scenic Eclipse Grand Deluxe Veranda Suite DD, Deck 5



Doppelbelegung



Nicht verfügbar

Einzelbelegung



Nicht verfügbar



Buenos Aires

Tag 1

Welcome to Buenos Aires, where you'll stay overnight. Perhaps plan to spend some time in the city, nicknamed the 'Paris of South America'. Resplendent with Belle Epoque buildings, sidewalk cafes and green spaces, there's the fiery passion of Latin America – a collective love for football, flame-cooked meats (asado) and the tango.

Some of the highlights are La Boca, a colourful, creative mecca with a must-do art walk, and San Telmo, a former aristocratic neighbourhood that was abandoned during a 19th-century epidemic. Mansions were turned into conventillos (shared housing), boutique hotels, antique shops, and tango clubs, exuding a captivating bohemian vibe.

Buenos Aires to Ushuaia

Tag 2

Take an included flight from Buenos Aires to Ushuaia, the main island of Tierra del Fuego and the southernmost city in the world. The Captain and crew will warmly greet you as you board your ultra-luxury Discovery Yacht, Scenic Eclipse.

Toast the start of your once-in-a-lifetime expedition as you depart South America and cruise through the calm and scenic Beagle Channel, named so for the ship that carried Charles Darwin on his five-year discovery journey. Admire the dramatic views of the Andean mountains from the comfort of your private verandah or from the Observation Deck with its commanding view of the bow.

Cape Horn & Murray Channel

Tag 3

Sail through the iconic waters of Cape Horn, where the Atlantic and Pacific Oceans meet at the southernmost point of South America. It's a great place to spot sea lions, penguins and whales. You'll also cruise through the Murray Channel, named after British naval officer Captain John Murray. Be on the lookout for albatrosses and other seabirds.

Join an introductory presentation by the Discovery Team as they explain how your Zodiac and other Discovery Excursions will operate during your voyage. The theatre is where you can watch talks, lectures, movies and documentaries during the day.

Chilean Fjords

Tag 4

Navigate the labyrinth of the Chilean Fjords – its long narrow inlets and steep cliffs, channels and islands all carved by glaciers - from the Observation Deck, with its commanding view of the bow. Marvel at the towering peaks, cascading waterfalls and dense forests of this pristine wilderness.

You will also witness Seno Garibaldi, one of a handful of advancing glaciers in the world, and cruise to Seno Pia Glacier where you will explore its ice crevasses and rivers. This is a World Heritage-listed Biosphere Reserve, and its rich waters are home to seals, sea lions and seabirds, including the impressive Andean condor.

Cruising Beagle Channel & Cockburn Channel

Tag 5

Cruise through the calm and scenic Beagle Channel, named so for the ship that carried Charles Darwin on his five-year discovery journey. Admire the dramatic views of the Andean mountains from the comfort of your Discovery Yacht. You will also cruise through the 64-kilometre Cockburn Channel, known for its stunning glacier views. Keep an eye out for seals, dolphins, and whales which frequent these waters.

Watch this spectacular scenery slip by as you relax in a cabana on Deck 10. Alternatively, ask your butler to bring afternoon tea to your suite and relax on your private verandah.

Aguila & Condor Glacier

Tag 6

Today, you will witness the awe-inspiring Aguila Glacier and Condor Glacier, which form part of the Darwin Mountain Range – named after Charles Darwin – in Alberto de Agostini National Park. This is the third largest park in Chile, comprising fjords, glaciers and ice fields among subpolar forests and snow-capped peaks. Marvel at the immense size of these ancient ice formations cascading down the mountainside into the sea. Aguila Glacier is particularly beautiful feeding into a mineral-rich lagoon that attracts wildlife.

Cruise Magdalena Channel - Tucker Islets

Tag 7

Stand on the Observation Terrace as you cruise through the narrow passage of Magdalena Channel, surrounded by towering cliffs and pristine wilderness. The Tucker Islets is a group of small islands and rocky outcrops in the Strait of Magellan, which is home to colonies of Magellanic penguins and other seabirds, such as skuas and petrels.

Tonight could be the night you meet your new friends at Sushi @ Koko's for dinner (available by on board reservation). Enjoy entertainment in the state-of-the-art theatre and unwind with a nightcap at the Scenic Lounge Bar.

Admiralty Sound and Ainsworth Bay

Tag 8

Cruise majestic Admiralty Sound, which is home to leopard and elephant seals and hugged by snow-topped mountain ranges, wide bays and majestic fjords of Alberto de Agostini National Park. Go ashore to secluded Ainsworth Bay in a Zodiac, where you can get up close to towering glaciers and perhaps spot seals basking on the ice floes.

You may also wish to enjoy your time on board with a visit to the gym for an invigorating workout or the studio for a Pilates class, some guided stretching or yoga.

Cruise Whiteside Canal and Strait of Magellan

Tag 9

Cruise through picturesque Whiteside Canal today and the historic Strait of Magellan, which links the Atlantic and Pacific Oceans. Named after Portuguese explorer Ferdinand Magellan in 1520, this was the primary passage for seafaring transport before the Panama Canal. You'll follow the journeys of early explorers such as Ferdinand Magellan and Sir Francis Drake. Learn about the rich maritime history of these legendary waterways from your expert Discovery Team.

You may wish to spend time in the theatre tonight, which has advanced cinemascope technology and multiple viewing screens that create an immersive 270-degree experience, complete with a sparkly night-sky ceiling.

Punta Arenas

Tag 10

Punta Arenas is located at the southern extreme of Chile and serves as the gateway into Antarctica as well as Torres del Paine National Park. Overlooking the Strait of Magellan, the city flourished during the California Gold Rush – its prime position served as a haven for ships. The city will captivate you with its clean air, sophisticated European architecture and is renowned for kayaking.

When back on board, you may wish to book a treatment# at the tranquil Senses Spa. Perhaps indulge with an ESPA facial or an alternative therapy including Ayurvedic massage.

Cruise Strait of Magellan and Atlantic Ocean

Tag 11

Sail through the legendary Strait of Magellan and enjoy panoramic views of the rugged coastline out on the open sea. Enjoy a specialty tea or coffee in the Observation Lounge and watch the world float by through Swarovski telescopes.

Spend time with friends at one of the 10 dining venues – enjoy a casual lunch at Azure Bar & Café or elegant affair at Elements. At night, enjoy a performance in the state-of-the-art theatre before you retreat to your ultra-luxury suite for a nightcap.

Isla Pingüino

Tag 12

Today you'll visit the remote and rugged Isla Pingüino, a windswept wildlife sanctuary just off the Patagonian coast. Named for its charismatic residents, the island is home to a thriving colony of Magellanic penguins and, unusually, a small group of rockhopper penguins, the only such colony found this far north on the Atlantic coast.

Step ashore with your expert Discovery Team for an up-close look at this vibrant ecosystem. As you walk the rocky terrain and seaweed-fringed coastline, keep your eyes open for lounging elephant seals and seabirds riding the thermals above the cliffs. The raw beauty of this windswept island offers a unique sense of seclusion and a deep connection to nature.

At Sea

Tag 13

After days of exploration, enjoy a sleep-in lulled by the rhythm of the ocean. A freshly squeezed juice, steaming barista-made coffee or tea delivered to your door by your butler will help start your leisurely day at sea.

Have you visited the bridge yet? Thanks to the Captain's open bridge policy, guests are welcome to learn more about the technical abilities of The World's First Discovery Yacht and see it in full operation. The bridge is also one of the best viewing areas on the ship.

Punta Piramides

Tag 14

Explore Punta Piramides, a World Heritage-listed nature reserve and an important breeding location for the endangered southern right whale, elephant seals and a large rookery of sea lions. Orcas frequent the area and shorebirds also stop here on their annual migrations.

When enjoying daily Discovery Excursions, ask your expert Discovery Team for photography tips and guidance on how to spot the wildlife around you. They will help you capture these incredible moments while cruising on the Zodiacs, kayaking and stand-up paddleboarding.

At Sea

Tag 15

Today is another leisurely day at sea. Head to the gym for an invigorating workout or the studio for a Pilates class, some guided stretching or aerial yoga. Perhaps book a treatment# at the tranquil Senses Spa, from an ESPA facial# to an alternative therapy including Ayurvedic massage.

Spend the afternoon at leisure in your luxurious suite or head for the spacious and elegant Scenic Lounge Bar to enjoy your beverage+ of choice, whether it be aged whiskey—there are over 130 varieties—or a glass of wine. Then choose from up to 10 world-class dining experiences for dinner.

At Sea

Tag 16

Today is your final full day at sea, so make the most of the luxurious spaces on board Scenic Eclipse. Ask your butler to deliver breakfast to your suite or dine with fellow guests in the alfresco Yacht Club.

Enjoy a dip in the Vitality pool, followed by some time in one of the shaded oceanfront cabanas. Play a board game in the Observation Lounge, or head to the Sky Deck to sip on some Champagne while enjoying the fresh ocean breeze. Return to your favourite dining experience with your new friends or indulge in a private dinner on your verandah.

Montevideo

Tag 17

Arrive in Montevideo, Uruguay's vibrant capital city that boasts a rich 300-year history and an eclectic melange of Art Deco and Neoclassical architecture. While its Rambla (beachside avenue) may not be as famous as Barcelona's, it's much longer at 22 kilometres and traces the seaside almost the entire way. Most of the city's streets connect to the Rambla, making Montevideo an easy place to navigate and explore. There's a collective love for meat, wine, football and celebrations, as well as an annual month-long carnival.

Buenos Aires

Your journey of wonder ends this morning in Buenos Aires. Farewell the crew and your new friends and disembark after breakfast, taking away memories of a truly unforgettable experience.

Please book your flight to depart out of Buenos Aires after 12:00 PM.

Tag 18

#Spa treatments at additional cost. +All drinks on board, including those stocked in your mini bar, are included, except for a very small number of rare, fine and vintage wines, Champagnes and spirits. Specialty restaurants require a reservation, enquire on board. ~Kayak and stand-up paddleboard not available in all locations. ^Flights on board our two helicopters and submersible experiences are at additional cost, subject to regulatory approval, availability, weight restrictions, medical approval and weather, ice and tidal conditions.

The itinerary is a guide only and may be amended for operational reasons. As such Scenic cannot guarantee the voyage will operate unaltered from the itinerary stated above. Please refer to our terms and conditions for further information.

Im Preis inbegriffen

- Services und Annehmlichkeiten an Bord
- Maximal 229 Gäste an Bord (200 in den Polarregionen)
- Großzügige Suiten mit privater Veranda 2:1-Verhältnis
- Gäste- und Butlerservice für jeden Gast
- Zehn kulinarische Erlebnisse in neun Gourmet-Menues – von gemütlicher Atmosphäre bis zum eleganten Fine Dining
- Auswahl an Premium-Markengetränken mit über 101 Whiskysorten
- Scenic Discovery Ausflüge mit dem Zodiac
- Komplettes Kajakprogramm und Stand-up-Paddle-Boarding
- Kostenloser Expeditionsparaka und Wasserflasche sowie die Nutzung von speziellen Polartiefeln
- Interessantes Vortrags- und Bildungsprogramm mit Experten an Bord
- Spezielle Observation Lounge und Terrasse für die beste Aussicht
- Swarovski-Teleskope an Deck sowie Ferngläser in der Suite, damit Sie keinen aufregenden Momente verpassen
- Senses Spa** auf 551 m² mit Fitnesscenter, Yoga- und Pilatesstudio
- Außen-Vitalpools nachskandinavischem Vorbild
- Modernes Theater mittäglichem Unterhaltungs- und Bildungsangebot
- WLAN inclusive
- Inlandsflüge inkl. Gebühren
- Flughafentransfers
- Trinkgelder an Bord und an Land

Nicht im Preis inbegriffen

- Internationale Flüge, sofern nicht angegeben
- Reiseversicherungen
- Visa- oder Passgebühren (falls erforderlich)
- persönliche Ausgaben (Einkäufe, optionale Ausflüge)
- sonstige im Programm nicht genannte Leistungen

Ihr Schiff

Ihr Schiff ist die "Scenic Eclipse". Ausführlich stellen wir Ihnen dieses Schiff auf unseren Schiffseiten vor. [Ausführliche Informationen zu diesem Schiff.](#)

Passagiere
199

Bordsprachen


Eisklasse
PC-6

Special
Helikopter

