

IHRE REISE

*Hauptsache Patagonien:
 Chilenische Fjorde und Torres del
 Paine*

Reisetermin
 20.03.2027 - 03.04.2027

Reisedauer
 15 Tage

Reederei / Schiff
 Ultramarine / Quark Expeditions



Explorer Dreibettkabine



Dreibettbelegung


€ 11.966
 pro Person

Gemeinschaftsbelegung


€ 11.966
 pro Person

Explorer Suite



Doppelbelegung


€ 14.036
 pro Person

Einzelbelegung


€ 23.861
 pro Person

Gemeinschaftsbelegung


€ 14.036
 pro Person

Ultramarine Balkon Suite



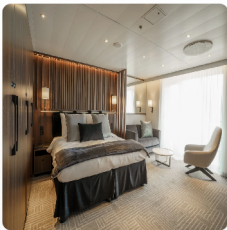
Doppelbelegung


€ 15.476
 pro Person

Einzelbelegung


€ 26.309
 pro Person

Deluxe Balkon Suite



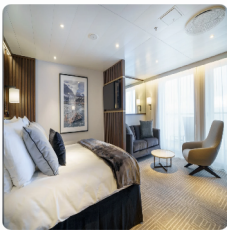
Doppelbelegung


€ 18.176
 pro Person

Einzelbelegung


€ 36.351
 pro Person

Penthouse Suite



Doppelbelegung


€ 20.336
 pro Person

Einzelbelegung


€ 40.671
 pro Person

Owner's Suite




Doppelbelegung


€ 25.106
 pro Person


Einzelbelegung


€ 50.211
 pro Person


Ultra Suite



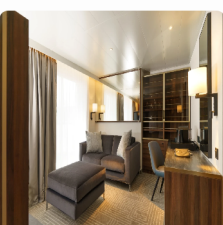
Doppelbelegung


€27.986
 pro Person


Einzelbelegung


€55.971
 pro Person


Terrace Suite




Doppelbelegung


 Nicht verfügbar


Doppelbelegung


 Nicht verfügbar

Einzelbelegung


 Nicht verfügbar

Einzelbelegung


 Nicht verfügbar

Panorama Einzelkabine

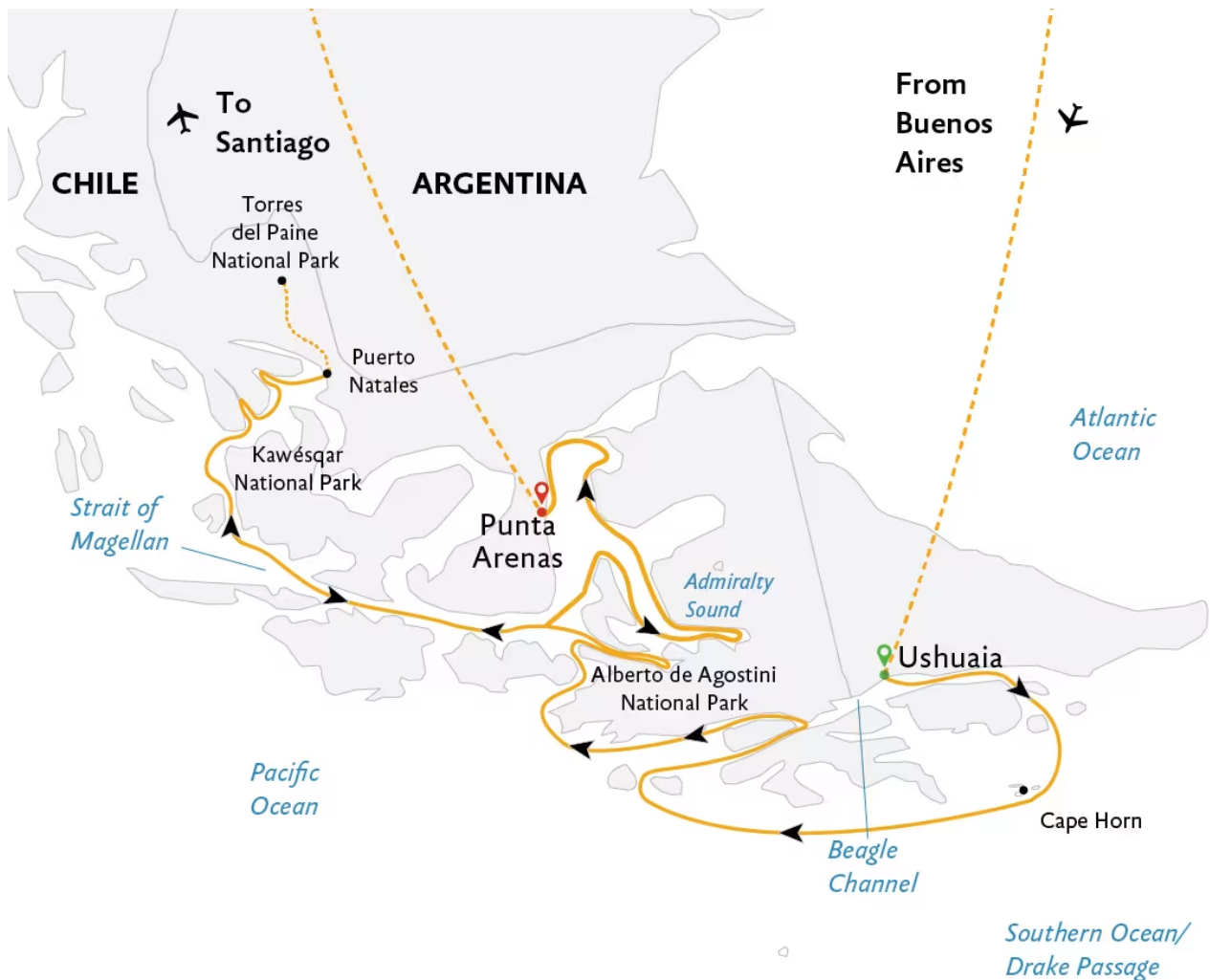


Einzelbelegung


 Nicht verfügbar

Einzelbelegung


 Nicht verfügbar



Buenos Aires, Argentina

ARRIVE IN BUENOS AIRES, ARGENTINA

Day 1

Upon arriving in this splendid city, known for its architecture and rich European heritage, you will independently transfer to your group hotel (pre-expedition hotel night included in mandatory transfer package).

Cruising

FLY TO USHUAIA AND EMBARK

Day 2

After an early breakfast at the hotel, the group will transfer to the airport and board our private charter flight to Ushuaia, Argentina. Upon arrival, you will be transferred from the airport to a central downtown location to have some time on your own to explore this quaint port town before meeting the bus (at a designated location) to be transferred to your ship. After a late afternoon embarkation, you will sail along the historic Beagle Channel, which transects the Tierra del Fuego archipelago in the extreme south of South America.

Cruising

CAPE HORN

Day 3

As we begin our exploration of Chile's southern extent, expect a new adventure every day. Though each expedition will be different, depending on the weather, we aim to start our journey to the "edge of the earth" with a visit to historic Cape Horn (Cabo de Hornos). At the southernmost point of the Tierra del Fuego ("Land of Fire") archipelago, this steep, rocky headland on Hornos Island marks the northern boundary of the famous Drake Passage, where the Atlantic and Pacific Oceans meet. From the 1700s to the early 1900s, prior to the opening of the Panama Canal, this cape was part of a major global trade route. **IMPORTANT REMINDER** If sea and weather conditions allow, you may go ashore for a hike out to the lighthouse, the tiny Stella Maris ("Star of the Sea") Chapel, and the albatross-shaped monument honoring the many mariners who lost their lives attempting to "round the Horn." Atop the windswept promontory, pause for a moment to take in the panoramic view and to enjoy the peaceful solitude that can only be found at one of the most southern stretches of land in the world.

Cruising

PIA AND GARIBALDI GLACIERS, GLACIER ALLEY

Days 4 and 5

As our ship sails north toward the southern edge of Tierra del Fuego, stimulating presentations by your Expedition Team will enrich your knowledge of the glacial systems, geology, environment, wildlife and storied history of the region as you retrace Charles Darwin's historic journey through the Beagle Channel, a 150-mile (240 km) strait separating Tierra del Fuego's main island from several smaller islands. Named after Captain Robert FitzRoy's famous ship on which Charles Darwin was a young naturalist, the channel presents plenty of photo ops to capture seabirds hovering overhead and dramatic vistas of jagged-peaked mountains and glaciers. Rugged and untouched, this magnificent landscape is as starkly beautiful as it was when Darwin first laid eyes on it in 1833. What he experienced in this region would later help him form his then controversial theory on evolution by natural selection. Glacier Alley (as it's nicknamed) is one of the most spectacular ship passages in Tierra del Fuego. The glaciers' names honor the European countries that first explored the region: España (Oblicuo), Romanche, Alemania (Roncagli), Francia, Italia, and Holland Glaciers. Situated within the protected boundary of Alberto de Agostini National Park, both Pia and Garibaldi Glaciers sit at the head of picturesque, often ice-choked fjords that offer guests jaw-dropping views. Located within the Cordillera Darwin (Darwin Mountain Range), the impressive Pia Glacier extends from the soaring mountaintops down into the sea. A short hike to a lookout point provides superb vistas of the glacier and mountains. Surrounded by pristine sub-Antarctic forests, Garibaldi Glacier flows from a separate mountain, providing equally exceptional views, with the Darwin Mountains rising dramatically out of the fjord. We can explore this area by Zodiac, and include a visit to a beautiful glacial waterfall nearby. As we navigate the fjords, your Expedition Team will keep watch for Andean condors, massive birds whose wing span is second only to the wandering albatross.

Cruising

DAINELLI (AGUILA) GLACIER

Day 6

Located at the end of a tranquil lagoon surrounded by lush sub-Antarctic forests in Agostini Sound, Dainelli Glacier (sometimes called Aguila— Spanish for "Eagle" Glacier) is a unique sight, as it appears to flow over rolling hills rather than mountains. Cruising aboard a Zodiac toward the blue-tinged ice, conditions permitting, you will be humbled by the wonder of nature's power. We hope to venture ashore for an easy hike along the beach to get a more intensive look at the glacier and surrounding mountains.

Cruising

CRUISING THE CHILEAN FJORDS

Day 7

Continuing north, we'll navigate through a remote network of coastal fjords and channels, including time spent venturing out into the Pacific Ocean. Your Expedition Team will prepare you for the adventures that await, helping you further understand the glacial systems, as well as the flora and fauna that can be found in this part of Chile. Take a moment, as we glide past soaring snow-capped peaks, to contemplate the indigenous peoples who thrived here for thousands of years and the mariners of early European exploration who traveled these same sheltered passageways, and were rewarded with the same wondrous sights.

Cruising

PUERTO Natales AND TORRES DEL PAINE NATIONAL PARK

Days 8 and 9

Sailing the turquoise waters of the extraordinary stretch of coastline leading to the small port of Puerto Natales, we'll meander through a mesmerizing maze of deep, windswept fjords, narrow channels and isolated bays, with an eye toward the rugged landscape, unique wildlife and impressive glaciers that tumble from the towering mountains into the icy waters below, along with the imperial and king cormorants, South American terns, black-necked swans and southern wigeons (Chiloé wigeons) that frequent the fjords. Torres del Paine National Park is one of the most stunning wilderness areas in South America, and Puerto Natales is the gateway. This enormous park is a UNESCO Biosphere Reserve, so designated for both its natural wonders and ancient human history, and named for the three granite peaks that tower above the glacier-fed lakes. Enjoy a day of hiking, and exploration aboard chartered buses tailored to your preferred activity level with lookouts in the park, followed by traditional Patagonian cuisine in the afternoon. Taking our expedition onto dry land for another full day, we will also visit a working Patagonian estancia ("ranch"), founded in 1891 by Scottish immigrants. Here you will learn about Patagonian sheep farming in a historic pastoral setting. You may be lucky enough to spot in the surrounding grasslands wildlife such as ostrich-like rhea, and guanacos, a wild relative of the domestic llama. Complete your cultural experience with a lunch of barbecued lamb al palo ("on a stick"), and return to the ship in the early evening.

Cruising

CANAL DE LAS MONTANAS

Day 10

Cruising the pristine waters of the Canal de las Montañas ("Channel" or "Fjord of the Mountains") will leave you breathless. You'll be awed by the amazing series of waterfalls cascading down between the jagged peaks that rise up sharply on either side of the narrow, 41-mile (66 km) long channel dotted with glaciers, five of which spill dramatically into the water. Here, impressive ice fields glisten in the distance, and steeply sloped glaciers exceed elevations over 8,235 feet (2,510 meters). The channel also provides an ideal place to put our Zodiacs in the water for more detailed exploring or the chance to go ashore for a hike to scenic viewpoints. If you're feeling more adventurous, perhaps you'll treat yourself to an optional kayaking excursion (extra cost), an exceptional opportunity to experience the channel from a unique perspective.

Cruising

TUCKERS ISLETS

Day 11

A series of small islands and rocky outcrops in Almirantazgo Sound ("Admiralty Sound"), a fjord off the Strait of Magellan, Tuckers Islets is a superb location for viewing penguins. Though landing here is prohibited to protect the fragile nesting habitat, a Zodiac excursion will take you near a pebble beach to view a colony of 4,000-plus breeding Magellanic penguins, conditions permitting. Named for Portuguese explorer Ferdinand Magellan, whose crew sighted the charming creatures in 1520 during the first circumnavigation of the globe, the species is native to the region, and the sight of them in their burrows, lounging on the beach or waddling in and out of the water, is one you won't forget. If we're fortunate, we may also see Chilean skuas, Magellanic cormorants (rock shags), imperial cormorants (king shags), oystercatchers, kelp geese, or even dolphins.

Cruising

AINSWORTH BAY

Day 12

Continuing our exploration of Almirantazgo Sound, we plan to explore ashore at Ainsworth Bay, one of the most picturesque and pristine places in Patagonia. Surrounded by untouched sub-Antarctic forest, this isolated bay is a protected area within the border of Alberto de Agostini National Park. It hosts abundant birdlife, so you'll want to keep your eyes peeled as we cruise in the Zodiacs. Hiking options will be available for all fitness levels, affording panoramic views of Marinelli Glacier, Marinelli Fjord and the surrounding Darwin mountain range.

Cruising

BAHIA BROOKES

Day 13

Another excellent spot for glacier exploring in Almirantazgo Sound is Bahia Brookes (Brookes Bay), where, conditions permitting, we'll go ashore by Zodiac. The bay offers ample chances for closer views of a number of waterfalls and glaciers, including the calving North Brookes Glacier, set against the breathtaking backdrop of the towering Darwin mountain range. Amid the serene silence of this icy wonderland, the only sound you may hear is the powerful roar of ice breaking off and crashing into the frigid waters below. This is also a great location for viewing ice fall deposits, which form reconstituted glaciers, and kame (silt and sediment deposits).

Cruising

MARTA ISLAND

Day 14

In the middle of the Strait of Magellan, Marta Island (Isla Marta) is home to abundant birdlife and more than one thousand Patagonian (South American) sea lions. To protect the wildlife, shore landings are not possible here, but we do plan to circumnavigate the island, providing numerous opportunities to observe and photograph the colony from a short distance, in the comfort of a Zodiac. Called lobos marinos (“sea wolves”) by local Chileans, these giant pinnipeds—males can weigh over 700 pounds/320 kg—form quite a noisy group as each sea lion vies for a choice spot of coastline. As you cruise by, sightings of imperial cormorants, skuas, southern gulls, snowy sheathbill—and if we’re lucky, dolphins—are also possible.

Santiago, Chile

DISEMBARK IN PUNTA ARENAS AND FLIGHT TO SANTIAGO

Day 15

After an adventurous two weeks of exploration, you’ll say goodbye to your Expedition Team and disembark in Punta Arenas, to be transferred to the airport for your charter flight to Santiago, where you are welcome to continue on your own travels or connect to your homeward flights.

Im Preis inbegriffen

- Führung während der gesamten Reise durch unsere erfahrenen Expeditionsleiter, einschließlich Landgängen und anderen Aktivitäten
- Alle Zodiac-Transfers und Fahrten gemäß dem Tagesprogramm
- Alle Landgänge gemäß dem Tagesprogramm
- Unterkunft an Bord mit täglichem Housekeeping
- Alle Mahlzeiten, Snacks, alkoholfreie Getränke und Säfte an Bord während der gesamten Reise (Bitte informieren Sie uns so weit wie möglich im Voraus über eventuelle Diätwünsche. Die Schiffsküche kann leider keine koscheren Mahlzeiten zubereiten).
- Bier, Standardweine und -spirituosen sowie Cocktails während der Barservicezeiten und beim Abendessen; sowie Kaffee, Tee und Kakao rund um die Uhr verfügbar
- Jeder Gast kann sich mit jeweils einem Gerät beim Wi-Fi-Service des Schiffes anmelden. Dieser ergänzende Wi-Fi-Dienst ermöglicht grundlegendes Surfen im Internet, vorbehaltlich Satellitenempfang
- Formelle und informelle Präsentationen durch unser Expeditionsteam und Gastredner nach Plan
- Ein Fototagebuch zur Dokumentation der Expedition
- Ein Paar wasserdichte Expeditionsstiefel als Leihgabe für Anlandungen und Zodiacfahrten.
- Ein offizieller Parka von Quark Expeditions zum Mitnehmen
- Haartrockner und Bademäntel in jeder Kabine
- Alle sonstigen Service-Steuern und Hafengebühren während des Programms
- Sämtliches Gepäckhandling an Bord des Schiffes
- Notfall-Evakuierungsversicherung für alle Passagiere bis zu einer maximalen Leistung von USD 500.000 pro Person
- Ein Gruppentransfer bei Ankunft in Punta Arenas vom Flughafen zum Hotel an Tag 1
- Eine Übernachtung im Hotel in Punta Arenas mit Frühstück (Hinweis: Die Anzahl der Gäste pro Zimmer entspricht der Kabinenbelegung auf dem Schiff. Aufgrund der begrenzten Verfügbarkeit werden Reisende, die eine Suite an Bord reservieren, in Standardzimmern im Hotel untergebracht. Dreibettzimmer sind möglicherweise nicht verfügbar.)
- Ein Briefing-Dinner am 1. Tag in Punta Arenas
- Ein Gruppentransfer vor der Expedition in Punta Arenas vom Hotel zum Flughafen
- Flüge zur und von der King George Insel
- Ein Gruppentransfer nach der Expedition in Punta Arenas vom Flughafen zum Hotel
- Eine Übernachtung in einem Hotel in Punta Arenas nach der Expedition mit Frühstück

Nicht im Preis inbegriffen

- Internationale Flugkosten
- Reisepass- und eventuelle Visakosten
- Nicht genannte staatliche Ankunfts- und Abflugsteuern
- Mahlzeiten, sofern nicht anders angegeben
- Reisegepäck-, Reiserücktritts-, Reiseabbruch- und Reisekrankenversicherung – dringend empfohlen
- Übergepäckgebühren bei internationalen Flügen
- Obligatorische wasserdichte Hosen für Zodiacfahrten oder andere nicht erwähnte Ausrüstung
- Wäscherei, Bar, Massageservice und andere persönliche Kosten, sofern nicht angegeben
- Telefon- und Internetgebühren

- Freiwilliges Trinkgeld am Ende der Reise für das Expeditionspersonal und die Schiffsbesatzung
- Zusätzliche Übernachtungen
- An- und Abreisetransfers, außer wenn ausdrücklich angegeben
- Zusätzliche Aktivitäten, die nicht in den eingeschlossenen Aktivitäten aufgeführt sind

Ihr Schiff

Ihr Schiff ist die "Ultramarine". Ausführlich stellen wir Ihnen dieses Schiff auf unseren Schiffseiten vor. [Ausführliche Informationen](#) zu diesem Schiff.

Passagiere
199

Bordsprachen


Eisklasse
PC-6

Special
Helikopter

