

IHRE REISE

Chilenische Fjorde, Gletscher & Antarktische Tierwelt entdecken

Reisetermin

04.11.2026 - 04.12.2026

Reisedauer

31 Tage

Reederei / Schiff

Scenic Eclipse / SCENIC Luxury Cruises & Tours



Scenic Eclipse Veranda Suite A, Deck 8



Doppelbelegung



€39.435

pro Person

Einzelbelegung



€78.320

pro Person

Scenic Eclipse Deluxe Veranda Suite DA, Deck 5



Doppelbelegung



€39.855

pro Person

Einzelbelegung



€79.160

pro Person

Scenic Eclipse Deluxe Veranda Suite CA, Deck 6



Doppelbelegung



€39.855

pro Person

Einzelbelegung



€79.160

pro Person

Scenic Eclipse Deluxe Veranda Suite AA, Deck 7



Doppelbelegung


€41.625
 pro Person

Einzelbelegung


€82.700
 pro Person

Scenic Eclipse Deluxe Veranda Suite BA, Deck 7



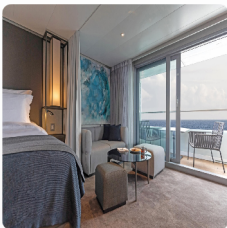
Doppelbelegung


€41.625
 pro Person

Einzelbelegung


€82.700
 pro Person

Scenic Eclipse Grand Deluxe Veranda Suite DD, Deck 5



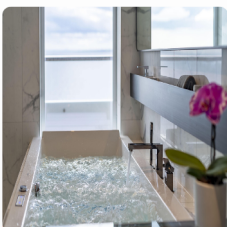
Doppelbelegung


€42.405
 pro Person

Einzelbelegung


€84.260
 pro Person

Scenic Eclipse Spa Suite S, Deck 8



Doppelbelegung


€53.025
 pro Person

Einzelbelegung


€105.500
 pro Person

Scenic Eclipse Spa Suite SA, Deck 9



Doppelbelegung



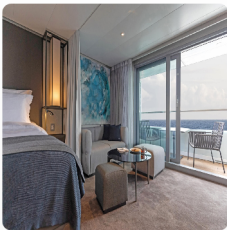
Nicht verfügbar

Einzelbelegung



Nicht verfügbar

Scenic Eclipse Grand Deluxe Veranda Suite CD, Deck 6



Doppelbelegung



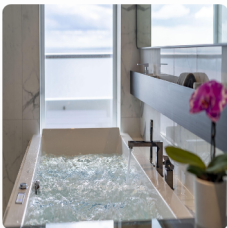
Nicht verfügbar

Einzelbelegung



Nicht verfügbar

Scenic Eclipse Spa Suite SB, Deck 9



Doppelbelegung



Nicht verfügbar

Einzelbelegung



Nicht verfügbar

Scenic Eclipse Veranda Suite D, Deck 5



Doppelbelegung



Nicht verfügbar

Einzelbelegung



Nicht verfügbar

Scenic Eclipse Veranda Suite B, Deck 7



Doppelbelegung



Nicht verfügbar

Einzelbelegung



Nicht verfügbar

Scenic Eclipse Owners Penthouse Suite OP, Deck 9



Doppelbelegung



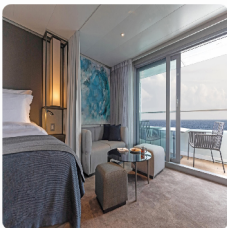
Nicht verfügbar

Einzelbelegung



Nicht verfügbar

Scenic Eclipse Grand Deluxe Veranda Suite BD, Deck 7



Doppelbelegung



Nicht verfügbar

Einzelbelegung



Nicht verfügbar

Scenic Eclipse Panorama Suite P, Deck 8



Doppelbelegung



Nicht verfügbar

Einzelbelegung



Nicht verfügbar

Scenic Eclipse Grand Deluxe Veranda Suite AD, Deck 8



Doppelbelegung



Nicht verfügbar

Einzelbelegung



Nicht verfügbar

Scenic Eclipse Veranda Suite C, Deck 6



Doppelbelegung



Nicht verfügbar

Einzelbelegung



Nicht verfügbar

Scenic Eclipse Deluxe Veranda Suite DB, Deck 5



Doppelbelegung



Nicht verfügbar

Einzelbelegung



Nicht verfügbar

Scenic Eclipse Grand Panorama Suite GP, Deck 6



Doppelbelegung



Nicht verfügbar

Einzelbelegung



Nicht verfügbar

Scenic Eclipse Two-Bedroom Penthouse Suite TP, Deck 9



Doppelbelegung

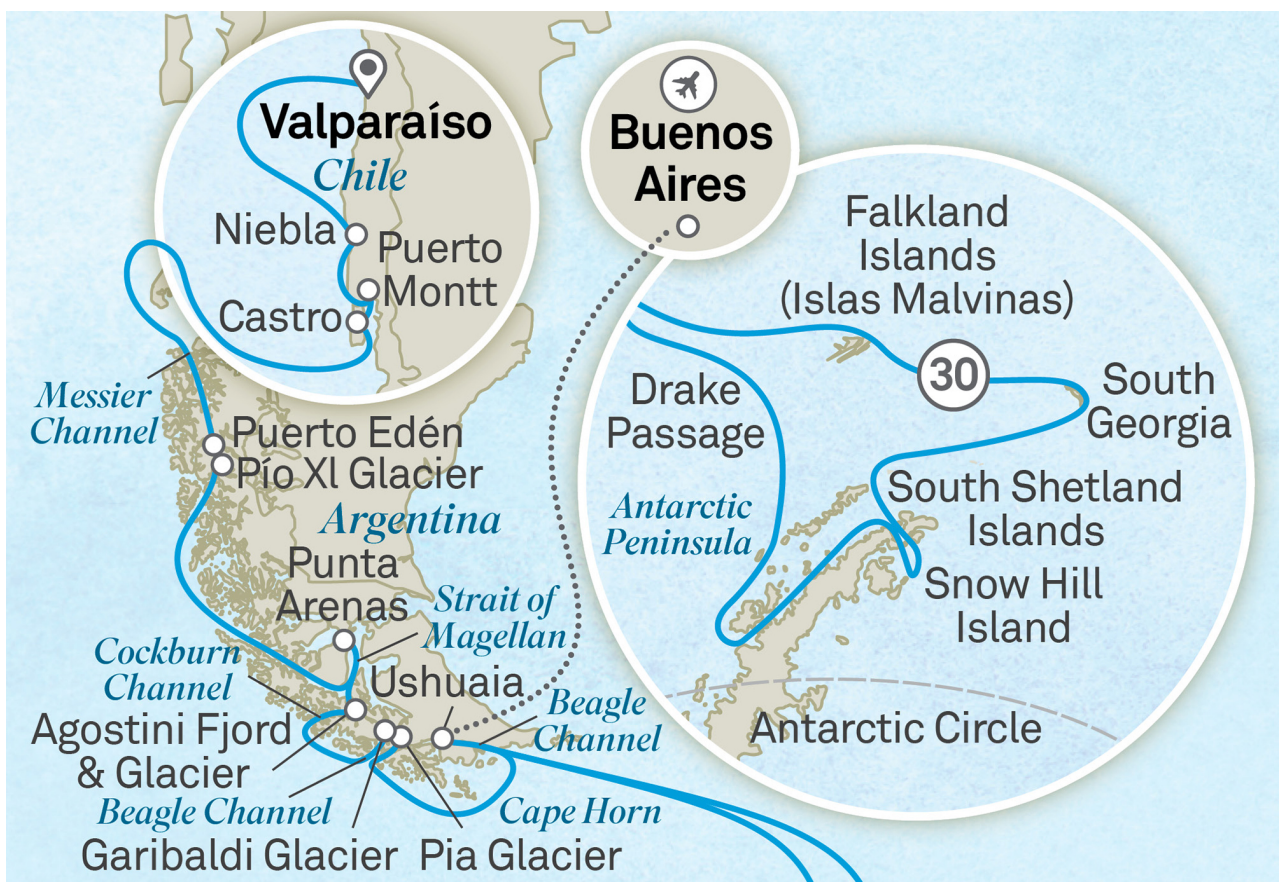


Nicht verfügbar

Einzelbelegung



Nicht verfügbar



Valparaíso, Chile

The World Heritage-listed city of Valparaíso has a long and colourful history dating to the 16th century conquistadors. It's a vibrant city, both for its cultural scene – rich in theatre, music, performance and street art – and for its brightly painted buildings that occupy its steep hillsides, which are accessed by funiculars. The vibe in this maze-like city is bohemian, its cobbled streets bustling with casual eateries and bars to enjoy a craft beer or pisco (pisco and coke).

Your journey into wonder begins with a warm greeting from the Captain and crew as you step on board Scenic Eclipse. Sip on a glass of Champagne and explore your luxurious suite, then join your fellow guests at the Sky Bar and toast to the start of an unforgettable voyage.

Please book your flight to arrive into Santiago prior to 12:00 PM.

Tag 1

At Sea

Tag 2

Enjoy a sleep-in lulled by the rhythm of the ocean. Wake up in your own time, and perhaps request your butler to deliver breakfast to your spacious suite or meet fellow guests in the alfresco Yacht Club.

Today, join an introductory presentation about your polar expedition by the Discovery Team in the state-of-the-art theatre. Feel the excitement building as they explain how your Zodiac and other Discovery Excursions will work in the coming days. The theatre is where you can watch talks, lectures, movies and documentaries during the day. At night, enjoy world-class productions from musical theatre and cabaret to pop music, dance and fun interactive game shows.

Niebla, Chile

Tag 3

Arrive in Niebla, which is home to the 17th century Niebla Fortress. Nearby Valdivia is known as one of Chile's most beautiful cities located along the waterfront of a winding delta. Valdivia is a vibrant and tenacious university town that has endured various challenges such as attacks, floods, fires, and the catastrophic earthquake of 1960—the strongest ever recorded—which nearly submerged the city.

Spend the afternoon at leisure in your luxurious suite or head for the spacious and elegant Scenic Bar Lounge to enjoy your beverage of choice, whether it be aged whiskey—there are over 130 varieties—or a glass of wine. Then choose from up to 10 world-class dining experiences for dinner.

Puerto Montt, Chile

Tag 4

A busy town in the Chilean Lake District, Puerto Montt sits near the end of the Pan-American Highway – this epic stretch of road begins in Alaska and continues to Ushuaia in Argentina. Puerto Montt is the gateway to the Andean Alps and Patagonian fjords, so your stop here will be full of anticipation; around the corner lie gorges, far-flung islands, snow-capped volcanoes, and windswept shores.

During downtime on the ship, you may wish to visit the gym for an invigorating workout or the studio for a Pilates class, some guided stretching or aerial yoga.

Castro, Isla Chiloé

Tag 5

Visit Castro, located on the island of Chiloé. This is a place of exquisite natural beauty, flanked by a fjord on the east and home to Chiloé National Park, where an abundance of wildlife species thrives on the west coast. Catch a glimpse of the local penguin colony, comprising Magellanic and Humboldt penguins which migrate to the region. Stroll through the city streets and sample local delicacies, such as the Chiloé potato, and view the city's many World Heritage-listed churches, known for their ecclesiastical wooden architecture.

At Sea

Tag 6

After days of exploration, spend time relaxing in your spacious suite. Delve into an insightful conversation with one of our Polar Discovery Team members – comprised of up to 20 members, this team of geologists, historians, ornithologists, marine biologists, and glaciologists is at the heart of your Expedition Voyage. Alternatively, simply watch as the world slips by as you rug up and relax in a cabana on Deck 10 or in the privacy of your suite's verandah.

Puerto Eden > Pio XI Glacier (Inner Fjords)

Tag 7

Cruise through the Inner Fjords and the English Narrows, which is home to remote Puerto Eden. This is the only settlement inside the Chilean Inside Passage, a region with a mountainous terrain and a thriving Magellanic sub-polar forest. You will be able to learn about the ancient Mapuche culture, navigate the town's intricate wooden boardwalks and see its native wildlife.

You will also see Pio XI Glacier, which is nestled within the Bernardo O'Higgins National Park and spans the size of Santiago. Also known as Bruggen Glacier, this exceptional wonder is the sole glacier on Earth that is expanding daily.

Cruising Strait of Magellan

Tag 8

Today you'll cruise the historic Strait of Magellan, which links the Atlantic and Pacific Oceans. Named after Portuguese explorer Ferdinand Magellan in 1520, this was the primary passage for seafaring transport before the Panama Canal. You'll follow the journeys of early explorers such as Ferdinand Magellan and Sir Francis Drake.

Learn about the rich maritime history of these legendary waterways from your expert Polar Discovery Team. Join them on the Observation Deck for scenic viewing and wildlife spotting or relax with a speciality tea or coffee in the Scenic Lounge.

Punta Arenas, Chile

Tag 9

Punta Arenas is located at the southern extreme of Chile and serves as the gateway into Antarctica as well as Torres del Paine National Park. Overlooking the Strait of Magellan, the city flourished during the California Gold Rush – its prime position served as a haven for ships. The city will captivate you with its clean air, sophisticated European architecture and is renowned for kayaking. Nearby Magdalena Island is the breeding ground of Magellanic penguin colonies.

When back on board, you may wish to book a treatment# at the tranquil Senses Spa. Perhaps indulge with an ESPA facial# or an alternative therapy including Ayurvedic massage#, Tibetan bowl sound healing or Japanese shiatsu.

Chilean Fjords

Tag 10

Navigate the labyrinth of the Chilean Fjords – its long narrow inlets and steep cliffs, channels and islands all carved by glaciers. From the Observation Deck with its commanding view of the bow, marvel at the towering peaks, cascading waterfalls, and dense forests of this pristine wilderness. When not covered in ice, the shore is a unique mix of temperate and Sub-Antarctic flora, from deciduous beech trees to edible calafate berries.

Stay alert for delightful sightings of elephant seals, dolphins, and majestic whales gracefully accompanying your voyage – use your complimentary binoculars to find these as they blend into the landscape.

Chilean Fjords

Tag 11

While cruising this magnificent region, you will witness Seno Garibaldi, one of a handful of advancing glaciers in the world. You will also cruise to Seno Pia Glacier, where you'll explore its ice crevasses and rivers. This area is a World Heritage-listed Biosphere Reserve, and its rich waters are home to seals, sea lions and seabirds, including the impressive Andean condor.

Watch the spectacular scenery slip by as you relax in a cabana on Deck 10 this afternoon. Alternatively, ask your butler to bring afternoon tea to your suite and relax on your private verandah.

Cape Horn

Tag 12

Cruise through the iconic waters of Cape Horn, where the Atlantic and Pacific Oceans meet at the southernmost point of South America. The collision of these two oceans can sometimes cause rocky waves but it's also a great place to spot sea lions, penguins and whales.

You will also cruise through the scenic Beagle Channel, named so for the ship that carried Charles Darwin on his five-year discovery journey. Admire the dramatic views of the Andean mountains from the comfort of your ultra-luxury Discovery Yacht.

Tonight could be the night you enjoy Sushi @ Koko's with your new friends. Stay up late in the bar or retire to the library for a moment of blissful solitude before bed.

Ushuaia

Tag 13

Discover Ushuaia, the enchanting "end of the world" destination nestled along the picturesque Beagle Channel. Here, vibrant hues dance against a backdrop of awe-inspiring snow-dusted peaks, with the towering Monte Olivia commanding attention. As your gateway to the spellbinding Antarctic Peninsula, Ushuaia promises unparalleled adventures and unrivaled beauty. Immerse yourself in a world of natural wonders, ancient cultures, and the intoxicating spirit of exploration that defines this extraordinary destination.

At sea

Tag 14

Today take some time to explore the Discovery Yacht and familiarise yourself with all the areas on board your new ultra-luxury home. Visit the Sky Bar on Deck 10 and step into the tranquil Senses Spa# on Deck 6 with its steam rooms, saunas, and relaxing Salt Therapy Lounge.

Join an introductory presentation about your polar expedition by the Discovery Team in the state-of-the-art theatre. At night, enjoy world-class productions from musical theatre and cabaret to pop music, dance, and fun interactive game shows.

Due to the extraordinary nature of the region, Discovery excursions throughout your Expedition Voyage are dependent on the ice and weather conditions. Your experienced Captain and specialist polar Discovery Team, with extensive experience in the region will craft your voyage to maximise the 18–20 hours of daylight. They will prepare you for your first landing on the White Continent, providing valuable insights and practical information for your polar expedition.

Falkland Islands

Tag 15

Remote and sparsely populated, the Falkland Islands are a wildlife lover's paradise. The world's largest population of Gentoo penguins is found here, in addition to King, Magellanic and Rockhopper penguins. Watch as they waddle along, interacting with each other.

You can also find black-browed albatross, plus Cobb's wren and Falkland's flightless steamer duck, which are both endemic bird species. Make sure to ask for some wildlife insights from the expert Discovery Team – comprised of up to 20 polar experts this team of geologists, historians, ornithologists, marine biologists, and glaciologists is at the heart of your Antarctic Voyage.

Scenic Discovery: Daily experiences during your expedition voyage may include cruising on Zodiacs, stepping ashore to view vast penguin rookeries, kayaking, stand-up paddleboarding, soar above in the helicopter^ and dive below in the submersible^.

Falkland Islands

Tag 16

While in the Falkland Islands, you'll visit capital Stanley (subject to weather and operational conditions). Since its colonisation in the 18th century, the ownership of the Falkland Islands has been clouded in controversy between France, Britain, Spain and Argentina. This town offers a unique British outpost feel. Visit local shops, see the Christ Church Cathedral with its whalebone arch, or share a pint at an English pub.

Tonight could be the night you meet your new friends at Sushi* @ Koko's for dinner. Enjoy entertainment in the state-of-the-art theatre and unwind with a nightcap at the Scenic Lounge Bar.

At sea

Tag 17

Freshly squeezed juice, barista-made coffee or tea delivered to your door by the butler will help start your day. Head to the gym for a workout or the studio for a Pilates class, some guided stretching or aerial yoga. You may wish to book a treatment at the tranquil Senses Spa#. Perhaps an ESPA facial or massage or an alternative therapy including Ayurvedic massage.

In the evening, settle in at the spacious Scenic Lounge Bar to enjoy your beverage of choice. With Scenic's signature all-inclusive ultra-luxury philosophy, indulge in top shelf spirits, over 130 whiskeys, a premium wine list and French Champagne.

At sea

Tag 18

As you cruise towards South Georgia, enjoy a specialty tea or coffee in the Observation Lounge and watch the world float by through Swarovski telescopes.

Choose one of up to 10 dining experiences and spend time with newly made friends – enjoy a casual lunch at Azure Bar & Café and an elegant dinner at Elements. At night, enjoy a performance in the state-of-the-art theatre before you retreat to your ultra-luxury suite with a nightcap.

South Georgia

Tag 19

Between the 3000-metre mountain range that forms the spine of South Georgia Island, shattered glaciers carve their way through tussock grass to the deeply indented coastline.

Today you'll land at the deserted whaling village of Stromness (subject to weather and operational conditions) where after a gruelling 36-hour hike through the South Georgia Mountains, Sir Ernest Shackleton was helped by the Norwegian whaling station manager.

Next, you'll head to Fortuna Bay (subject to weather and operational conditions) which has panoramic views of jagged summit peaks and remarkable König Glacier.

Scenic Discovery: Today you may have the chance to explore this fascinating landscape on Zodiacs, kayaks, stand-up paddleboards, self-pace hike and submersible^ excursions. Your expert Discovery Team will take you on enlightening excursions that put you close to South Georgia's stunning wildlife and nature.

South Georgia

Tag 20

Pay your respects to the renowned explorer Sir Ernest Shackleton at his final resting place in the settlement of Grytviken. Here, you can also see the remnants of old whaling stations, with some ships left rusting around the bay.

Scenic Discovery: Explore by Zodiac, kayak or stand-up paddleboard with possible shore landings (weather and ice permitting). To further discover South Georgia book a submersible^ experience.

South Georgia

Tag 21

At South Georgia's southern tip, Cooper Bay (subject to weather and operational conditions), watch for giant petrels and brown skuas as they soar above and playful fur seals in underwater kelp forests. Climb a short but steep hill to find a macaroni penguin colony hidden among tussock grasses.

Scenic Discovery: Explore by Zodiac, kayak or stand-up paddleboard with possible shore landings (weather and ice permitting).

At sea

Tag 22

After days of exploration, spend time relaxing in your spacious suite. The Discovery Team will help you prepare for your first landing on the White Continent, offering insight and inspiration as well as giving you practical information about your upcoming polar expedition.

Have you visited the bridge yet? Thanks to the Captain's open bridge policy, guests are welcome any time to learn more about the technical abilities of The World's First Discovery Yacht and see it in full operation. The bridge is also one of the best viewing areas on the ship.

At sea

- Today you will enter Antarctic waters, an unpredictable but stunningly beautiful environment that always surprises. Put on your complimentary polar parka and head to the Observation Deck and feel the excitement building up as you search for icebergs.
- Tag 23 Watch out for whale blows in the distance and your expert polar Discovery Team will be on hand to provide and answer any insightful information.
- In the evening, explore more of the up to 10 all-inclusive dining experiences on board, sampling fine French cuisine at Lumière or vibrant Asian fusion at Koko's. Alternatively, relax and dine in the comfort of your suite and have your evening nightcap brought by your butler.

Antarctica

- Slide open the floor-to-ceiling doors of your verandah suite to see icebergs sculpted by nature and glacial mountains rising thousands of metres from the ocean. True magic awaits as you witness the incredible wildlife spectacle: from the graceful seals to majestic whales and delightful colonies of penguins that dot the landscape.
- Tag 24 Antarctica is also a birdwatcher's paradise, with more than 40 different species. Keep your eyes peeled for wandering albatrosses, which has the largest wingspan of any flying bird, as well as shearwaters, giant petrels and more.
- Scenic Discovery:** Explore by Zodiac, kayak or stand-up paddleboard with possible shore landings (weather and ice permitting). To see Antarctica from above or below the horizon book a helicopter[^] or a submersible[^] experience.

Antarctica

- Experience the awe-inspiring beauty of Brown Bluff (subject to weather and operational conditions), where towering canyon walls, dramatic boulders, and ice-capped volcanic wonders create a landscape like no other. Just across the Antarctic Sound lies Kinnes Cove (subject to weather and operational conditions), where the striking red hues of the Madder Cliffs paint a picture of untouched beauty. Keep your eyes peeled—you might just be lucky enough to encounter charming Gentoo penguins in their natural habitat. This is adventure redefined!
- Tag 25 **Scenic Discovery:** Enjoy daily Discovery excursions. Cruise on the Zodiacs around ice formations, step onto islands to view vast penguin rookeries and seals. Kayak or stand-up paddleboard past icebergs and hear the ice cracking and whales feeding below. Soar above the horizon in the helicopter[^] or dive below in the submersible[^] for further discovery.

Antarctica

- For a truly unique and exclusive experience, book a helicopter excursion[^] to visit Snow Hill Island (additional cost, subject to weather and operational conditions). This is home to a significant colony of around 10,000 Emperor penguins, one of only two of its kind in the Peninsula. Departing by helicopter from your Discovery Yacht in the Weddell Sea, you'll land on Snow Hill Island and walk 1.5 kilometres with your Discovery Team, including our ornithologist, to see the colony. The Emperor penguins are only present at this location at the start of the Antarctica season and there are only a couple of voyages with this experience each season.
- Tag 26 **Scenic Discovery:** Explore by Zodiac, kayak or stand-up paddleboard with possible shore landings (weather and ice permitting). To see Antarctica from above or below the horizon book a helicopter[^] or a submersible[^] experience.

Antarctica

Various species of penguins can be found in Antarctic and the sub-Antarctic region, including Adélie, Chinstrap, Gentoo, and the very rare Emperor penguins. Guided by the expert Discovery Team, you'll witness colonies up close; hear their calls and watch as they waddle along and interact with each other.

Tag 27

Whales are another majestic creature you may encounter, whether a minke, a humpback or an Orca. Watch for them from the comfort of your ultra-luxury Discovery Yacht, in a Zodiac with an expert polar Discovery Team member, or from their level in a kayak or stand-up paddleboard – a breathtaking experience.

Scenic Discovery: Explore by Zodiac, kayak or stand-up paddleboard with possible shore landings (weather and ice permitting). To see Antarctica from above or below the horizon book a helicopter[^] or a submersible[^] experience.

Antarctica

The polar plunge is a once-in-a-lifetime opportunity and a rite of passage on an expedition to Antarctica. Once throughout your voyage, the marina will be set up for anyone who'd like to jump into the Antarctic waters.

Tag 28

As you stand on the edge, ready to jump, you'll feel the adrenaline rush. When you jump, an invigorating, exciting and surprisingly refreshing sensation will take over.

If you choose to skip the polar plunge, make sure you find a good viewing location to watch the chilly jumpers emerge. Join them for a cup of hot chocolate or a glass of whiskey.

At sea

Cruising the Drake Passage back to the tip of South America, there is plenty of time to indulge in the ultra-luxury of your Discovery Yacht and reflect on the magic moments you've experienced in the Southern Ocean.

Tag 29

Curl up in one of the private cabanas on Deck 10 with a book or meet friends for a coffee or glass of wine in the Observation Lounge on Deck 5, where you'll be enchanted by the endless horizons of the ocean from the panoramic glass windows.

At sea > Ushuaia

This is your final day on board your Discovery Yacht, so take the time to return to your favourite spots. That might mean one last treatment[#] in the luxurious Senses Spa or stretching out in a class at the PURE: Yoga & Pilates Studio.

Tag 30

Sit down for lunch with your new friends, sharing photos and travel experiences as you recall your favourite memories from these awe-inspiring days on the seventh continent. Later tonight, raise a glass to an unforgettable voyage at the spacious Scenic Lounge Bar. Enjoy your beverage of choice, whether it be aged whiskey or a glass of wine. Scenic Eclipse will arrive in Ushuaia, the main island of Tierra del Fuego and the southernmost city in the world, late this evening.

Ushuaia, Argentina > Buenos Aires

Your voyage ends this morning as you farewell the crew and fellow guests. Disembark after breakfast in Ushuaia, Argentina for your included transfer flight to Buenos Aires where your journey concludes, taking away memories of a truly unforgettable experience.

Please book your flight to depart out of Buenos Aires after 09:30 PM.

Tag 31

[^]Flights on board our two helicopters and submersible experiences are at additional cost, subject to regulatory approval, availability, weight restrictions, medical approval and weather, ice and tidal conditions. Helicopter not available in South Georgia. [#]Spa treatments at additional cost. +All drinks on board, including those stocked in your mini bar, are included, except for a very small number of rare, fine and vintage wines, Champagnes and spirits. Specialty restaurants require a reservation, enquire on board.

The itinerary is a guide only and may be amended for operational reasons. As such Scenic cannot guarantee the voyage will operate unaltered from the itinerary stated above. Locations listed within South Georgia, Falkland Islands and Antarctica are subject to weather and operational conditions. Sightings cannot be guaranteed. Please refer to our terms and conditions for further information.

Im Preis inbegriffen

- Services und Annehmlichkeiten an Bord
- Maximal 229 Gäste an Bord (200 in den Polarregionen)
- Großzügige Suiten mit privater Veranda 2:1-Verhältnis
- Gäste- und Butlerservice für jeden Gast
- Zehn kulinarische Erlebnisse in neun Gourmet-Menues – von gemütlicher Atmosphäre bis zum eleganten Fine Dining
- Auswahl an Premium-Markengetränken mit über 101 Whiskysorten
- Scenic Discovery Ausflüge mit dem Zodiac
- Komplettes Kajakprogramm und Stand-up-Paddle-Boarding
- Kostenloser Expeditionsarka und Wasserflasche sowie die Nutzung von speziellen Polartiefeln
- Interessantes Vortrags- und Bildungsprogramm mit Experten an Bord
- Spezielle Observation Lounge und Terrasse für die beste Aussicht
- Swarovski-Teleskope an Deck sowie Ferngläser in der Suite, damit Sie keinen aufregenden Momente verpassen
- Senses Spa** auf 551 m2 mit Fitnesscenter, Yoga- und Pilatesstudio
- Außen-Vitalpools nachskandinavischem Vorbild
- Modernes Theater mittäglichem Unterhaltungs- und Bildungsangebot
- WLAN inclusive
- Inlandsflüge inkl. Gebühren
- Flughafentransfers
- Trinkgelder an Bord und an Land

Nicht im Preis inbegriffen

- Internationale Flüge, sofern nicht angegeben
- Reiseversicherungen
- Visa- oder Passgebühren (falls erforderlich)
- persönliche Ausgaben (Einkäufe, optionale Ausflüge)
- sonstige im Programm nicht genannte Leistungen

Ihr Schiff

Ihr Schiff ist die "Scenic Eclipse". Ausführlich stellen wir Ihnen dieses Schiff auf unseren Schiffseiten vor. [Ausführliche Informationen](#) zu diesem Schiff.

Passagiere

199

Bordsprachen



Eisklasse

PC-6

Special

Helikopter

