

IHRE REISE

# Expedition Rossmeer: Majestätisches Eis und wilde Tiere in der Ostantarktis

Reisetermin

06.01.2026 - 29.01.2026

Reisedauer

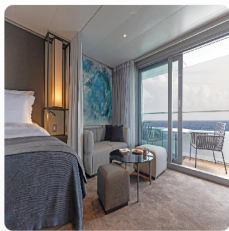
24 Tage

Reederei / Schiff

Scenic Eclipse II / SCENIC Luxury Cruises & Tours



Scenic Eclipse II Grand Deluxe Veranda Suite DD, Deck 5



Doppelbelegung



~~28.395~~  
**€ 24.955**

pro Person

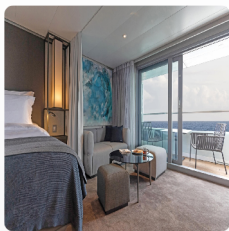
Einzelbelegung



**€ 69.570**

pro Person

Scenic Eclipse II Grand Deluxe Veranda Suite CD, Deck 6



Doppelbelegung



~~28.395~~  
**€ 24.955**

pro Person

Einzelbelegung



**€ 69.570**

pro Person

Scenic Eclipse II Spa Suite S, Deck 8



Doppelbelegung



~~33.250~~  
**€27.140**

pro Person

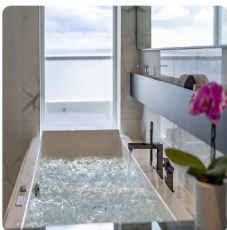
Einzelbelegung



**€85.670**

pro Person

Scenic Eclipse II Spa Suite SA, Deck 9



Doppelbelegung



~~33.250~~  
**€27.140**

pro Person

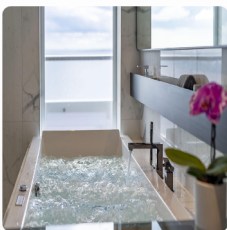
Einzelbelegung



**€86.590**

pro Person

Scenic Eclipse II Spa Suite SB, Deck 9



Doppelbelegung



~~33.250~~  
**€27.140**

pro Person

Einzelbelegung



**€86.590**

pro Person

Scenic Eclipse II Deluxe Veranda Suite DB, Deck 5



Doppelbelegung



Nicht verfügbar

Einzelbelegung



Nicht verfügbar

Scenic Eclipse II Deluxe Veranda Suite BA, Deck 7



*Doppelbelegung*



Nicht verfügbar

*Einzelbelegung*



Nicht verfügbar

Scenic Eclipse II Deluxe Veranda Suite CA, Deck 6



*Doppelbelegung*



Nicht verfügbar

*Einzelbelegung*



Nicht verfügbar

Scenic Eclipse II Deluxe Veranda Suite AA, Deck 7



*Doppelbelegung*



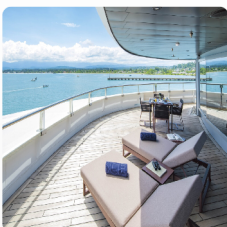
Nicht verfügbar

*Einzelbelegung*



Nicht verfügbar

Scenic Eclipse II Grand Panorama Suite GP, Deck 6



*Doppelbelegung*



Nicht verfügbar

*Einzelbelegung*



Nicht verfügbar

Scenic Eclipse II Veranda Suite A, Deck 8



*Doppelbelegung*



Nicht verfügbar

*Einzelbelegung*



Nicht verfügbar

Scenic Eclipse II Deluxe Veranda Suite DA, Deck 5



*Doppelbelegung*



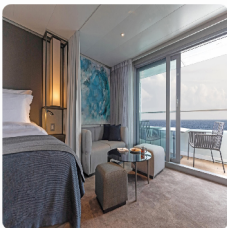
Nicht verfügbar

*Einzelbelegung*



Nicht verfügbar

Scenic Eclipse II Grand Deluxe Veranda Suite AD, Deck 8



*Doppelbelegung*



Nicht verfügbar

*Einzelbelegung*



Nicht verfügbar

Scenic Eclipse II Owners Penthouse Suite OP, Deck 9



*Doppelbelegung*



Nicht verfügbar

*Einzelbelegung*



Nicht verfügbar



Scenic Eclipse II Veranda Suite B, Deck 7



*Doppelbelegung*



Nicht verfügbar

*Einzelbelegung*



Nicht verfügbar

Scenic Eclipse II Panorama Suite P, Deck 8



*Doppelbelegung*



Nicht verfügbar

*Einzelbelegung*



Nicht verfügbar

Scenic Eclipse II Veranda Suite D, Deck 5



*Doppelbelegung*



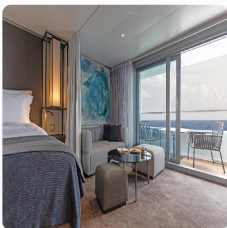
Nicht verfügbar

*Einzelbelegung*



Nicht verfügbar

Scenic Eclipse II Grand Deluxe Veranda Suite BD, Deck 7



*Doppelbelegung*



Nicht verfügbar

*Einzelbelegung*



Nicht verfügbar

Scenic Eclipse II Veranda Suite C, Deck 6



*Doppelbelegung*



Nicht verfügbar

*Einzelbelegung*



Nicht verfügbar

Scenic Eclipse II Two-Bedroom Penthouse Suite TP, Deck 9



*Doppelbelegung*

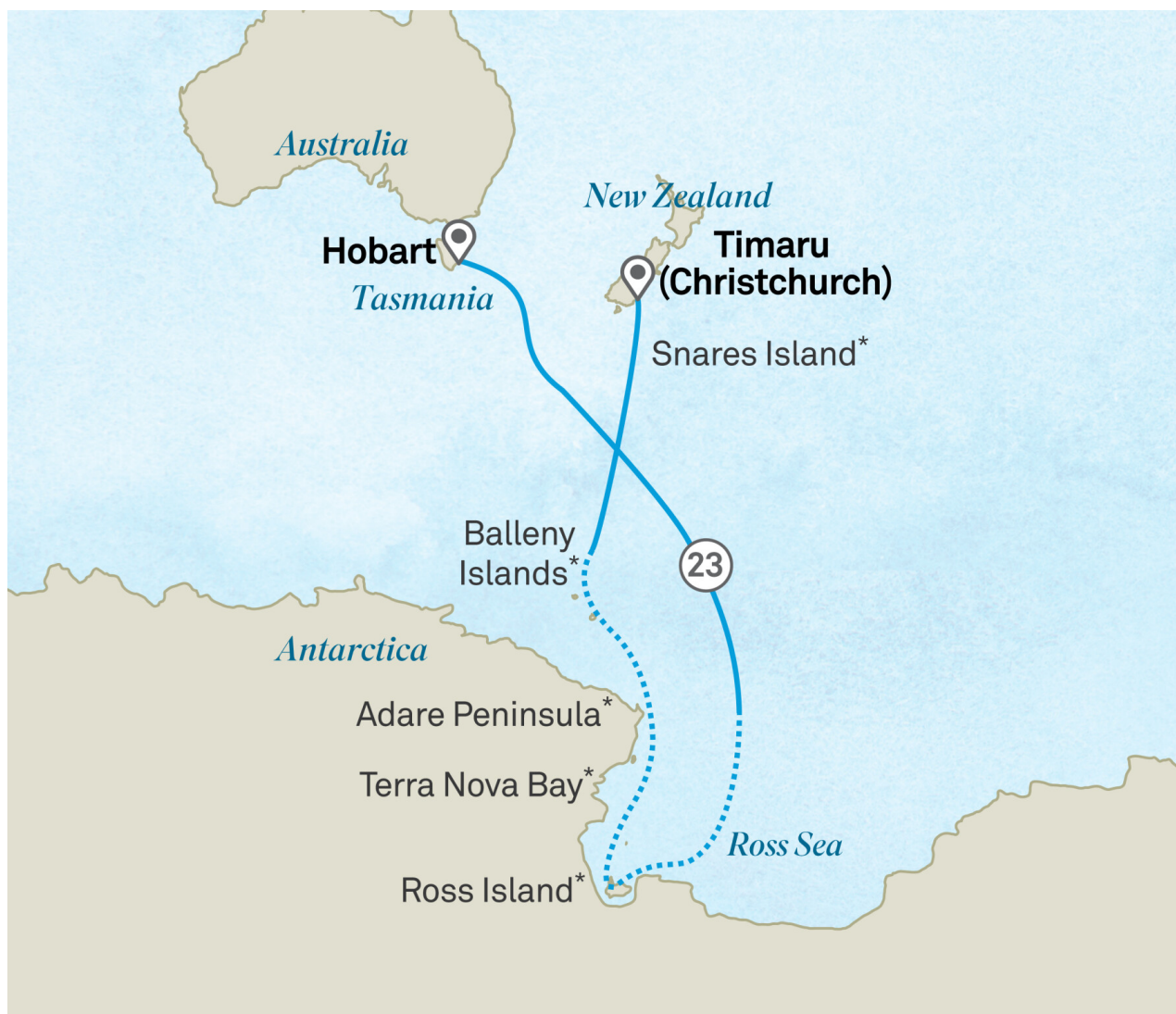


Nicht verfügbar

*Einzelbelegung*



Nicht verfügbar



## Hobart, Australia

Tag 1

The Tasmanian capital, Hobart, always makes an impression, from the boats bobbing in its harbour to its thought-provoking art galleries such as MONA and produce-driven restaurants. As you board Scenic Eclipse II, you'll be warmly welcomed by the Captain and crew with a glass of Champagne. Settle into your spacious verandah suite, meet your butler, and explore the world-class facilities of your Discovery Yacht. Then, gather on the Observation Deck to toast to the remarkable journey ahead as you sail away from Australia toward the world's last great frontier.

Please book your flight to arrive into Hobart prior to 02:00 PM.

## At sea

Tag 2

The vast Southern Ocean stretches ahead, marking the beginning of your immersive journey. Today, meet the Discovery Team, a group of world-renowned polar experts who will bring Antarctica to life through their deep knowledge of geology, glaciology, wildlife, and exploration history.

Join an introductory presentation in the state-of-the-art theatre, where your Discovery Leader will unveil the wonders of the White Continent, setting the stage for the awe-inspiring days ahead.

Due to the extraordinary nature of the region, Scenic Discovery excursions throughout your Expedition Voyage are dependent on the ice and weather conditions. Your experienced Captain and specialist polar Discovery Team, who have made countless journeys to Antarctica including visits to this region last season, will use their expertise to design your voyage from day to day, making the most of your time in this spectacular destination.

## At sea

Tag 3

Sea days aboard offer a perfect opportunity to unwind, connect with fellow guests, and dive into the rich history, environment, and unique wildlife of this captivating part of the world.

During the day, the theatre holds captivating lectures from your Discovery Team. Be sure to check the Daily Program on your TV for timing.

Your Discovery Yacht's state-of-the-art technology allows for smooth navigation through Antarctica's waters due to its Polar Class 6 rating, electronic Azipod propulsion system and oversized stabilisers.

## At Sea

Tag 4

A day to relax, recharge, and deepen your knowledge of Antarctica's incredible ecosystems.

Start your morning with an invigorating yoga or Pilates class, followed by a relaxing soak in the Vitality Pool. Or savour a barista-made coffee from your suite while gazing at the vast Southern Ocean.

The Observation Lounge, with its Swarovski telescopes and floor-to-ceiling windows, is the perfect place to spot sea birds, dolphins, and other marine life.

Enjoy enrichment lectures from your Discovery Team, who will continue to unveil the secrets of Antarctica's marine biodiversity, glaciology, and the region's rich history.

### Scenic Discovery:

Take advantage of the enrichment lectures from the Discovery Team, covering topics such as marine life, seabirds, polar history, ice formations, and Antarctica's unique ecosystem. Out on the Observation Deck, from the bridge or from your private verandah, keep an eye out for wandering albatross, petrels, and even the occasional whale as you sail south.

## At sea

Tag 5

As we continue south, the Discovery Team will host another series of expert-led lectures, covering Antarctica's unique wildlife, ice formations, and early explorers' daring expeditions.

When you're visiting some of the world's most fragile ecosystems, you have a commitment to protect them for future generations. Take advantage of our open bridge policy to meet with the Captain and his team to learn about Scenic Eclipse II's state-of-the-art technology and sustainable systems designed to protect fragile ecosystems, leaving as small a footprint as possible.

Later, choose one of up to 10 dining experiences from casual lunch at Azure Bar & Café to an elegant dinner at Elements.

### Scenic Discovery:

Immerse yourself in the wonders of Antarctica with engaging talks from the Discovery Team, exploring subjects like the region's diverse wildlife, glacial landscapes, polar exploration, and the delicate ecosystem of the White Continent. As you sail south, step onto the Observation Deck or relax on your private verandah to spot soaring albatross, gliding petrels, and perhaps even a whale breaking the surface.

## At sea

Tag 6

Your Discovery Yacht's advanced cinemascope theatre comes to life with immersive presentations from the Discovery Team, each revealing the secrets of Antarctica's ever-changing landscapes, diverse wildlife, and climate systems.

Spot wandering albatross, giant petrels, and perhaps even pods of dolphins or whales from the Bridge or your private verandah.

Spend the day at your own pace, perhaps indulging in a rejuvenating ESPA facial at Senses Spa#, reading a book in the Observation Lounge, or simply gazing out over the endless ice-blue horizon.

This evening, weather you opt for contemporary French cuisine at Lumière or the fresh Sushi @ Koko's, tonight is a celebration of the journey so far.

### Scenic Discovery:

Engage with the Discovery Team's insightful lectures, delving into topics like marine wildlife, seabirds, polar history, and the fascinating ice formations of Antarctica. Whether from the deck or the comfort of your private verandah, stay on the lookout for majestic albatross, graceful petrels, and the occasional whale as you journey south.

## At Sea

Tag 7

A moment of anticipation approaches as the first icebergs appear on the horizon.

Today, prepare for your Antarctic landings with a final expedition briefing, ensuring you're ready for Zodiac operations, wildlife etiquette, and safety protocols.

The Discovery Team will host interactive discussions, helping you understand the unique wildlife and ecosystems of Antarctica. They also give you tips on keeping your camera ready as penguins, seals, or even whales may make an appearance.

### Scenic Discovery:

The Discovery Team will share fascinating insights into this rarely explored region, preparing you for the wonders ahead. Keep watch from the deck or your private verandah, you may catch sight of soaring seabirds or even a whale marking your passage into these legendary waters.

## Antarctica's Ross Sea Region

Tag 8

Be sure to stay close to your verandah as you enter the Ross Sea. The pristine, iceberg-rich ocean is popular among orcas, seals, penguins and whales.

This rugged and remarkable body of water is surrounded by sky-scraping mountains and carved by glacial ice tongues, vast ice shelves and drifting sea ice.

Your Captain and Discovery Leader will seek out the safest opportunities for you to explore the area.

Over the next few days on Ross Island, at the base of Mount Erebus, you'll have the opportunity to walk in the footsteps of legendary explorers Ernest Shackleton and Robert Falcon Scott.

### Scenic Discovery:

Today you may have the opportunity to explore this fascinating landscape on the fleet of Zodiacs, kayaks, stand-up paddleboarding, guided and self-paced hikes. Alternatively, you may add a flight on one of the two on board helicopters\*.

## Antarctica's Ross Sea Region

Tag 9

Weather and ice conditions permitting, we will arrive at Beaufort Island, a remote and rugged volcanic outpost rising dramatically from the icy waters of the Ross Sea. Located on the edge of the Ross Ice Shelf, this isolated sanctuary is home to a thriving Adélie penguin colony, as well as skuas and other seabirds. Its towering cliffs and icy shores create a breathtaking landscape, offering a rare glimpse into Antarctica's untouched wilderness.

### Scenic Discovery:

You may have the opportunity to explore this fascinating landscape on the fleet of Zodiacs, kayaks, and stand-up paddleboards. Alternatively, conditions permitting, you may experience an exclusive flightseeing excursion on one of the two on board helicopters\*, offering breathtaking aerial views of the Antarctic wilderness.

## Antarctica's Ross Sea Region

Tag 10

Few sights in Antarctica are as dramatic as Mount Erebus, the southernmost active volcano on Earth. Sit down with your expert polar Discovery Team in the theatre to learn why Sir James Clark Ross and Sir Ernest Shackleton came here and how they built their huts. Both huts are still here today and are classified as an Antarctica historical monument.

Throughout the day, keep an eye out for Adélie penguins.

Cape Bird is home to one of the region's largest colonies, where these charming birds nest along its rugged, rocky shores.

Further south, Cape Royds blends history and wildlife. It's home to Shackleton's well-preserved 1908 Nimrod expedition hut.

### Scenic Discovery:

Another exciting opportunity to soar over the breathtaking landscape with flightseeing on one of the two on board helicopters\*.

Alternatively, you may explore this fascinating landscape and spot Ross Sea wildlife on the fleet of Zodiacs, kayaks, stand-up paddleboarding, guided and self-paced hikes. Your expert Discovery Team may take you on enlightening excursions to historic explorers' huts.

## Antarctica's Ross Sea Region

Tag 11

Today, weather and conditions permitting step into the world of Antarctic exploration as we navigate toward Cape Evans. This is home to one of the most important historical sites on the continent, Robert Falcon Scott's Terra Nova Hut, the base for his legendary 1911–1913 expedition to the South Pole.

You will land via Zodiac directly at Cape Evans, where you will have the rare opportunity to walk through Scott's Hut, preserved much as it was over a century ago. This is one of Antarctica's most moving and well-preserved monuments to human endurance and ambition.

Back on board join your Discovery Team historians for a fascinating lecture on the rivalry between Scott, Amundsen, and Shackleton, deepening your appreciation for the sheer determination it took to survive in this formidable landscape.

### Scenic Discovery:

Depending on weather and ice conditions, you may have the chance to explore this remarkable landscape in a variety of ways. Take to the water on a Zodiac cruise through icy waters in a kayak or stand-up paddleboard~, or, for a truly unique perspective, soar above the frozen expanse on an exclusive flightseeing excursion by helicopter\*. Your expert Discovery Team may take you on enlightening excursions to the historic explorers' huts.

## Antarctica's Ross Sea Region

Today, if conditions allow, prepare for one of the most exclusive experiences in the world - a helicopter flight<sup>^</sup> over the McMurdo Dry Valleys.

A stark, otherworldly landscape, the Dry Valleys are one of the driest places on Earth. The only way to glimpse this dramatic landscape is by adding an optional excursion on one of Scenic Eclipse II's helicopters<sup>^</sup> – weather permitting, your pilot may even land on this end-of-the-Earth landscape.

Tag 12

For those staying on board, the day offers enriching experiences - from wildlife spotting in the Observation Lounge to deep-dive lectures on the region's pioneering research stations.

### Scenic Discovery:

Experience the breathtaking McMurdo Dry Valleys from above with an optional helicopter<sup>^</sup> flight, offering a rare glimpse of this otherworldly, arid landscape, often compared to Mars.

Alternatively, embark on a Zodiac cruise across pristine Antarctic waters on a kayak or stand-up paddleboard~. Keep an eye out for orcas and Emperor penguins, while your Discovery Team shares fascinating insights into the region's history.

## Cruising Ross Sea Ice Shelf

Experience the edge of the world as you cruise along the Ross Ice Shelf, the largest floating ice mass on the planet. Towering up to 50 metres (160 feet) above sea level, this frozen fortress is one of the most spectacular sights in Antarctica.

Tag 13

As the day unfolds, your Captain and Discovery Leader will seek out the best opportunities for exploration—perhaps a Zodiac cruise alongside the towering ice cliffs or wildlife encounters with Weddell seals resting on the frozen landscape.

### Scenic Discovery:

Depending on conditions, you may have the opportunity to fly on one of the two on board helicopters<sup>^</sup> to the Ross Sea Ice Shelf. On this unforgettable optional flightseeing excursion, see the spectacular ice shelf from above and possibly land on it.

Alternatively, you may explore this fascinating landscape and spot Ross Sea wildlife on the fleet of custom-built Zodiacs, kayaks, stand-up paddleboarding~, guided and self-paced hikes.

## Antarctica's Ross Sea Region

Today, we may visit one of Antarctica's most poignant historical sites, Inexpressible Island, where six men from Robert Falcon Scott's Terra Nova Expedition (1910–1913) spent an unthinkable winter, stranded with almost no supplies.

Your Discovery Team historians will bring their story to life, recounting tales of sheer resilience and determination that remain among the most incredible feats in polar history.

Tag 14

Beyond its historical significance, Inexpressible Island is also a haven for wildlife. Adélie penguins thrive here, and the surrounding waters are often frequented by Weddell and crabeater seals. If conditions allow, we may explore the dramatic coastline by Zodiac.

Back on board, consider unwinding at the Senses Spa#, indulging in a soothing treatment to reflect on the unforgettable experiences of the past days.

### Scenic Discovery:

Today, you may have the opportunity to explore this fascinating landscape on the fleet of Zodiacs, by Kayak or stand-up paddleboarding~. You may also have the opportunity to experience this incredible landscape from the air by taking an exclusive helicopter<sup>^</sup> flight.



## Antarctica's Ross Sea Region

All jagged cliffs and ink-black escarpments backed by the towering Admiralty Mountains, the Adare Peninsula is a dramatic postcard. Much of the spectacle comes courtesy of the 250,000 breeding pairs of Adélie penguins – the largest colony in Antarctica – that call the region home.

Tag 15

This place has drawn avid expeditioners for centuries. It was the site of the first documented Antarctic landing on the continent in 1895. Norwegian explorer Carsten Borchgrevink's two 1899 huts remain on land.

Sip a hot beverage in the Observation Lounge, where you can read books and play board games in between wildlife watching. In the evening, up to 10 extraordinary dining experiences await.

### Scenic Discovery:

Weather and conditions permitting, you may have the opportunity to explore the hut remains with your Discovery Team. Or explore this fascinating landscape on the fleet of Zodiacs, kayaks, stand-up paddleboards~, guided and self-paced hikes.

## At Sea

Tag 16

Sea days aboard offer a perfect opportunity to unwind, connect with fellow guests, and dive into the rich history, environment, and unique wildlife of this captivating part of the world. The Discovery Team will deliver engaging talks and presentations on the local wildlife and history.

Alternatively, step into the tranquil Senses Spa# on Deck 6 with its steam rooms, saunas, Salt Therapy Lounge and Vitality Thermal Lounge. Stop for a coffee or a cocktail at one of the eight bars and lounges on board or curl up in the library of the Observation Lounge.

## Balleny Islands

Tag 17

This 160-kilometre-long chain of volcanic islands, some of them still active, straddles the Antarctic Circle. Here, you will have a front-row seat to one of the greatest convergences of wildlife in the world.

Humpbacks, fin and minke whales may put on a show while we are nearby, breaching, blowing, and slapping their tails. Crabeater, Weddell Ross Sea Seals and leopard seals loll about, sunbaking between swims. Join a Discovery excursion or just take in the view from the Observation Deck or your private verandah.

**Scenic Discovery:** Daily experiences may include cruising on Zodiacs, stepping ashore to view vast penguin rookeries or kayaking around icebergs. Wherever your voyage takes you, you will have countless "pinch me" moments.

## At sea

Tag 18

As you sail away from East Antarctica's Ross Sea toward Snares Island, take in the ever-changing seascape and reflect on the incredible experiences of the past days. The Discovery Team will continue to enhance your journey with engaging enrichment lectures, offering deeper insights into Antarctica's ecosystems, climate, and the pioneering explorers who braved these waters.

Keep your binoculars ready, as this stretch of ocean is home to wandering albatross, petrels, and possibly even pods of whales making their way through these remote waters. From the Observation Lounge or your private verandah, watch as the vast Antarctic ice fades into the open Southern Ocean, knowing that new wildlife encounters await at Snares Island.

## At sea

Tag 19 As you sail through one of the world's most fragile and pristine environments, take a moment to reflect on the importance of conservation. Scenic Eclipse II is designed to navigate this extreme region with the utmost care, equipped with world-class technology that minimises environmental impact. Take advantage of the open bridge policy, where you can meet the Captain and crew to gain insight into the innovative technology and systems that make this voyage possible.

Tonight, could be the night you enjoy contemporary French fine dining at Lumière with your new friends. Stay up late in the bar or retire to the library for a moment of blissful solitude before bed.

## At sea

Tag 20 With days of expeditionary experiences behind you, today is the perfect opportunity to expand your knowledge of Antarctica's wildlife, glaciology, and history. The state-of-the-art theatre will host a series of engaging talks from your Discovery Team and special guest experts, offering deeper insight into this fascinating region.

Immerse yourself in the cinema-like experience, where advanced cinemascope technology and a 270-degree viewing screen bring the Antarctic wilderness to life in stunning detail.

As the evening unfolds, enjoy a performance in the theatre or retreat to your suite with a nightcap in hand, savouring the quiet luxury of your Discovery Yacht.

## Snares Island

Tag 21 Remote, rugged, and richly protected, The Snares are the closest Subantarctic Islands to New Zealand - so pristine that they remain completely uninhabited. This remarkable wildlife sanctuary, consisting of two main islands and the five-island Western Chain, enjoys the highest level of conservation protection.

**Scenic Discovery:** While landings are not permitted, join the Discovery Team on a Zodiac cruise along the sheltered eastern coast, weather and sea conditions permitting. Keep your eyes peeled for the endemic Snares Crested Penguin, Snares Island Tomtit, and elusive Fernbirds. The islands also host a staggering number of nesting Sooty Shearwaters.

## At sea

Tag 22 On your final day at sea, take the time to reflect on the unforgettable experiences of the past few weeks. Perhaps you'll spend the morning organising your photos or adding the finishing touches to your travel journal.

Indulge in one last moment of relaxation at Senses Spa®, booking an ESPA facial or an alternative therapy. Let the warmth of the Salt Therapy Lounge envelop you as you hold onto the sense of calm and renewal that this voyage has brought.

As the evening draws near, raise a glass in the Scenic Lounge Bar, toasting to an extraordinary journey.

## Timaru

Timaru welcomes you with stunning ocean views, golden beaches, and rich heritage.

Step ashore and explore Timaru's unique blend of heritage and modern charm. Stroll along the Bay Hill promenade, where stunning ocean views meet inviting cafés and boutique shops. Delve into the region's past at the South Canterbury Museum, showcasing Maori artifacts and early settler history. For art lovers, the Aigantighe Art Gallery offers an inspiring collection of local and international works. Join one of the Scenic Freechoice activities planned for this stop and experience the best of Kiwi charm.

### Scenic Freechoice:

Tag 23

**Mt. Cook and Lake Tekapo:** Experience a breathtaking trip from Timaru through Mackenzie Country, stopping at the turquoise Lake Tekapo and iconic Church of the Good Shepherd, then Lake Pukaki and majestic Mount Cook, with a buffet lunch and insights at the Sir Edmund Hillary Alpine Centre.

**Erewhon Sheep Station and Clydesdales:** Uncover Canterbury's high country at Erewhon Station, a 35,000-acre treasure beneath the Southern Alps. From Timaru, traverse the Canterbury Plains, stopping at Lake Clearwater and Edoras for photos, then experience Merino sheep-shearing, Hereford cattle, deer, and a Clydesdales wagon ride, before enjoying a mountain picnic lunch.

**Oamaru and the Moeraki Boulders:** Uncover Oamaru's historic charm, the mysterious Moeraki Boulders, and Dot's Castle (Riverstone Castle), with lunch at the renowned Riverstone Kitchen featuring local flavours amidst its picturesque, serene setting.

**Town and Coastal Discovery Walk:** Stroll Timaru's waterfront from the wharf to Caroline Bay, admire ocean and mountain views, visit Benvenue Cliffs, and explore Te Ana Maori Rock Art with morning tea on Bay Hill.

## Timaru (Christchurch)

Your voyage ends in Timaru, a charming port town known for its stunning coastal landscapes and warm Kiwi hospitality.

After one last luxurious breakfast, it's time to bid farewell to your new friends and crew, taking memories for a lifetime.

You will join a standard transfer from Timaru to Christchurch.

Please book your flight to depart out of Christchurch after 02:00 PM.

Tag 24

^Flights on board our two helicopters and submersible experiences are at additional cost, subject to regulatory approval, availability, weight restrictions, medical approval and weather, ice and tidal conditions. ~Kayak and stand-up paddleboard not available in all locations. #Spa treatments at additional cost. +All drinks on board, including those stocked in your mini bar, are included, except for a very small number of rare, fine and vintage wines, Champagnes and spirits. Specialty restaurants require a reservation, enquire on board.

The itinerary is a guide only and may be amended for operational reasons. As such Scenic cannot guarantee the voyage will operate unaltered from the itinerary stated above.

\*Locations listed within East Antarctica are subject to weather and operational conditions. Sightings cannot be guaranteed. Please refer to our terms and conditions for further information.

#### **Im Preis inbegriffen**

- Services und Annehmlichkeiten an Bord
- Maximal 229 Gäste an Bord (200 in den Polarregionen)
- Großzügige Suiten mit privater Veranda 2:1-Verhältnis
- Gäste- und Butlerservice für jeden Gast
- Zehn kulinarische Erlebnisse in neun Gourmet-Menues – von gemütlicher Atmosphäre bis zum eleganten Fine Dining
- Auswahl an Premium-Markengetränken mit über 101 Whiskysorten
- Scenic Discovery Ausflüge mit dem Zodiac
- Komplettes Kajakprogramm und Stand-up-Paddle-Boarding
- Kostenloser Expeditionsarka und Wasserflasche sowie die Nutzung von speziellen Polartiefeln
- Interessantes Vortrags- und Bildungsprogramm mit Experten an Bord
- Spezielle Observation Lounge und Terrasse für die beste Aussicht
- Swarovski-Teleskope an Deck sowie Ferngläser in der Suite, damit Sie keinen aufregenden Momente verpassen
- Senses Spa\*\* auf 551 m<sup>2</sup> mit Fitnesscenter, Yoga- und Pilatesstudio
- Außen-Vitalpools nachskandinavischem Vorbild
- Modernes Theater mittäglichem Unterhaltungs- und Bildungsangebot
- WLAN inclusive
- Inlandsflüge inkl. Gebühren
- Flughafentransfers
- Trinkgelder an Bord und an Land

---

#### **Nicht im Preis inbegriffen**

- Internationale Flüge, sofern nicht angegeben
- Reiseversicherungen
- Visa- oder Passgebühren (falls erforderlich)
- persönliche Ausgaben (Einkäufe, optionale Ausflüge)
- sonstige im Programm nicht genannte Leistungen

## Ihr Schiff

Ihr Schiff ist die "Scenic Eclipse II". Ausführlich stellen wir Ihnen dieses Schiff auf unseren Schiffseiten vor. [Ausführliche Informationen zu diesem Schiff.](#)

Passagiere  
199

Bordsprachen  


Eisklasse  
PC-6

Special  
Helikopter

