

IHRE REISE

# Antarktis, Südgeorgien und Falklandinseln im Spätsommer

Reisetermin

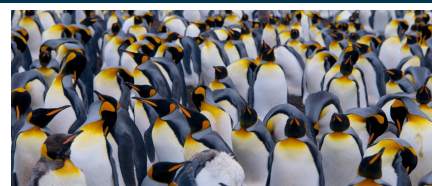
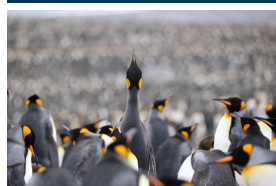
24.02.2026 - 18.03.2026

Reisedauer

23 Tage

Reederei / Schiff

Scenic Eclipse / SCENIC Luxury Cruises & Tours



Scenic Eclipse Deluxe Veranda Suite DB, Deck 5



Doppelbelegung



**€24.945**

pro Person

Einzelbelegung



**€49.330**

pro Person

Scenic Eclipse Deluxe Veranda Suite AA, Deck 7



Doppelbelegung



**€26.845**

pro Person

Einzelbelegung



**€53.130**

pro Person

Scenic Eclipse Deluxe Veranda Suite BA, Deck 7



Doppelbelegung



**€26.845**

pro Person

Einzelbelegung



**€53.130**

pro Person

Scenic Eclipse Grand Deluxe Veranda Suite DD, Deck 5



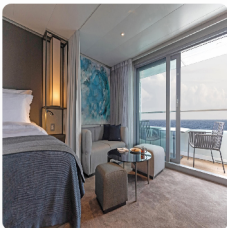
*Doppelbelegung*

  
**€ 28.100**  
 pro Person

*Einzelbelegung*

  
**€ 55.640**  
 pro Person

Scenic Eclipse Grand Deluxe Veranda Suite BD, Deck 7



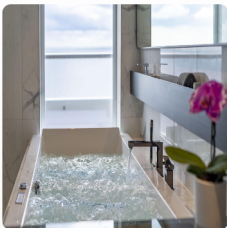
*Doppelbelegung*

  
**€ 28.100**  
 pro Person

*Einzelbelegung*

  
**€ 55.640**  
 pro Person

Scenic Eclipse Spa Suite SA, Deck 9



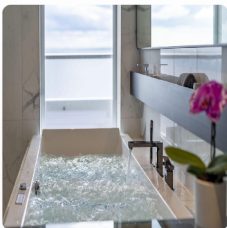
*Doppelbelegung*

  
**€ 34.000**  
 pro Person

*Einzelbelegung*

  
**€ 67.440**  
 pro Person

Scenic Eclipse Spa Suite S, Deck 8



*Doppelbelegung*

  
**€ 34.000**  
 pro Person

*Einzelbelegung*

  
**€ 67.440**  
 pro Person

Scenic Eclipse Panorama Suite P, Deck 8



Doppelbelegung

  
**€ 59.965**  
 pro Person

Einzelbelegung

  
**€ 119.370**  
 pro Person

Scenic Eclipse Deluxe Veranda Suite CA, Deck 6



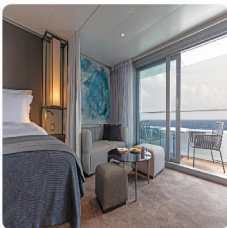
Doppelbelegung

  
 Nicht verfügbar

Einzelbelegung

  
 Nicht verfügbar

Scenic Eclipse Grand Deluxe Veranda Suite CD, Deck 6



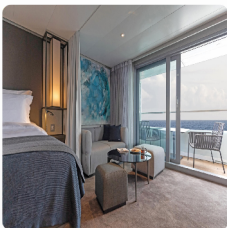
Doppelbelegung

  
 Nicht verfügbar

Einzelbelegung

  
 Nicht verfügbar

Scenic Eclipse Grand Deluxe Veranda Suite AD, Deck 8



Doppelbelegung

  
 Nicht verfügbar

Einzelbelegung

  
 Nicht verfügbar

Scenic Eclipse Spa Suite SB, Deck 9



*Doppelbelegung*



Nicht verfügbar

*Einzelbelegung*



Nicht verfügbar

Scenic Eclipse Grand Panorama Suite GP, Deck 6



*Doppelbelegung*



Nicht verfügbar

*Einzelbelegung*



Nicht verfügbar

Scenic Eclipse Veranda Suite A, Deck 8



*Doppelbelegung*



Nicht verfügbar

*Einzelbelegung*



Nicht verfügbar

Scenic Eclipse Owners Penthouse Suite OP, Deck 9



*Doppelbelegung*



Nicht verfügbar

*Einzelbelegung*



Nicht verfügbar



Scenic Eclipse Veranda Suite B, Deck 7



*Doppelbelegung*



Nicht verfügbar

*Einzelbelegung*



Nicht verfügbar

Scenic Eclipse Veranda Suite C, Deck 6



*Doppelbelegung*



Nicht verfügbar

*Einzelbelegung*



Nicht verfügbar

Scenic Eclipse Veranda Suite D, Deck 5



*Doppelbelegung*



Nicht verfügbar

*Einzelbelegung*



Nicht verfügbar

Scenic Eclipse Deluxe Veranda Suite DA, Deck 5



*Doppelbelegung*



Nicht verfügbar

*Einzelbelegung*



Nicht verfügbar

Scenic Eclipse Two-Bedroom Penthouse Suite TP, Deck 9



Doppelbelegung



Nicht verfügbar

Einzelbelegung



Nicht verfügbar



## Buenos Aires, Argentina

Tag 1

Welcome to Buenos Aires, where you'll have an overnight hotel stay. Perhaps plan to spend some time in the city, nicknamed the 'Paris of South America'. Resplendent with Belle Epoque buildings, sidewalk cafes and green spaces, there's the fiery passion of Latin America – a collective love for football, flame-cooked meats (asado) and the tango.

Some of the highlights are La Boca, a colourful, creative mecca with a must-do art walk, and San Telmo, a former aristocratic neighbourhood that was abandoned during a 19th-century epidemic. Mansions were turned into conventillos (shared housing), boutique hotels, antique shops, and tango clubs, exuding a captivating bohemian vibe.

## Buenos Aires > Ushuaia

Tag 2

Fly from Buenos Aires to Ushuaia, the main island of Tierra del Fuego and the southernmost city in the world. The Captain and crew will warmly greet you as you board your ultra-luxury Discovery Yacht, Scenic Eclipse.

Toast the start of your once-in-a-lifetime expedition as you depart South America and cruise through the calm and scenic Beagle Channel, named so for the ship that carried Charles Darwin on his five-year discovery journey. Admire the dramatic views of the Andean mountains from the comfort of your private verandah or from the Observation Deck with its commanding view of the bow.

## At sea

Tag 3

Wake up in your own time as we cruise across the Drake Passage, the infamous waterway that connects South America to Antarctica. Perhaps ask your butler for breakfast to be delivered to your spacious suite or meet fellow guests in the Yacht Club.

Today, join an introductory presentation about your polar expedition by the Polar Discovery Team in the state-of-the-art theatre. Feel the excitement building as they explain how your Zodiac and other Discovery Excursions will work in the coming days. The theatre is where you can watch talks, lectures, movies and documentaries during the day. At night, enjoy world-class productions from musical theatre and cabaret to pop music, dance and fun interactive game shows.

## Antarctica

Tag 4

Today you will enter Antarctic waters, an unpredictable but stunningly beautiful environment that always surprises. Put on your complimentary polar parka and head to the Observation Deck to spot icebergs for the first time – it's a feeling that will stay with you forever.

Watch out for whale blows in the distance and your expert polar Discovery team will be on hand to provide and answer any insightful information. Comprised of up to 20 members, this team of geologists, historians, ornithologists, marine biologists, and glaciologists is at the heart of your Antarctic Voyage.

## Antarctica

Tag 5

Slide open the floor-to-ceiling doors of your verandah suite to see icebergs sculpted by nature and glacial mountains rising thousands of metres from the ocean. Antarctica is a birdwatcher's paradise, with more than 40 different species, so keep your eyes peeled for wandering albatrosses, which has the largest wingspan of any flying bird, as well as shearwaters, giant petrels and more.

Due to the extraordinary nature of the region, Discovery excursions throughout your Expedition Voyage are dependent on the ice and weather conditions. Your experienced Captain and specialist Polar Discovery Team, who have made countless journeys to Antarctica, will use their expertise to design your voyage from day to day, making the most of 18–20 hours of daylight.

**Discovery:** Daily experiences may include cruising on Zodiacs, stepping ashore to view vast penguin rookeries or historic huts, and kayaking or paddle boarding around icebergs. Wherever your voyage takes you, you will have countless "pinch me" moments.

## Antarctica

Tag 6

Portal Point^^ – a former British refuge hut – may be a potential landing site during your voyage.

**Discovery:** Or you may visit Deception Island^^ as part of your itinerary. Nestled in the South Shetland Islands archipelago, it is one of the only places in the world that ships can sail directly into the centre of a submerged caldera of an active volcano. With her world-class design and state-of-the-art technology, Scenic Eclipse can sail through a rocky gap into the horseshoe-shaped harbour. The island is also home to a few small scientific outposts and hundreds of thousands of chinstrap penguins.

## Antarctica

Tag 7

Various species of penguins can be found in Antarctic and the sub-Antarctic region, with around 12 million penguins living on the Peninsula, including Adélie, Chinstrap, Gentoo, and the very rare Emperor penguins. Guided by the expert Polar Discovery Team, you'll witness colonies up close; hear their mighty calls and watch as they clumsily waddle along and interact with each other.

Whales are another majestic creature you may encounter, whether a minke, a humpback or an Orca. Watch them from the comfort of your ultra-luxury Discovery Yacht, in a Zodiac with an experienced Polar Discovery Team member, or from their level in a kayak or stand-up paddleboard – a breathtaking experience.

**Discovery:** Partake in daily Scenic Discovery excursions. Cruise on the Zodiacs around ice formations, step onto islands to view vast penguin rookeries and seals. Kayak and stand-up paddleboard around icebergs and hear the ice cracking and whales feeding below.

## Antarctica

Tag 8

Lemaire Channel^^, renowned for its picturesque views and often referred to as 'Kodak Alley', could be our next exciting destination. If during your voyage the Scenic Eclipse weaves through this channel, make sure you set your alarm and embrace the cool air from the Observation Terrace. Pass through the 11-kilometre-long channel, just 700 metres wide at its narrowest point, and be amazed at the dramatic rocky mountains and glowing blue icebergs so close to the ship.

In between Scenic Discovery experiences, enjoy a specialty tea or coffee in the Observation Lounge and watch the world float by through Swarovski telescopes.

## Antarctica

Tag 9

In the distance on a clear day you can see Mount Francis ^^ standing tall as Anvers Island's highest peak, showcasing the rugged beauty of Antarctica. Every day is unique, you might get the chance to hike or spend time on the pebbled beach, enjoying the view surrounded by curious penguins.

Back on board, explore some of Scenic Eclipse's indulgent spaces, from the welcoming Observation Lounge to the expansive Senses Spa#. Soothe your muscles in the sauna or heated therapy lounge, join a yoga or Pilates class. Choose one of up to 10 world-class on board dining experiences tonight.

## At sea

Tag 10

Freshly squeezed juice, steaming barista-made coffee or tea delivered to your door by the butler will help start your day. Head to the gym for an invigorating workout or the studio for a Pilates class, some guided stretching or aerial yoga. You may wish to book a treatment# at the tranquil Senses Spa. Perhaps an ESPA facial or massage# or an alternative therapy including Ayurvedic massage.

In the evening, settle in at the spacious Scenic Lounge Bar to enjoy your beverage of choice, whether it be aged whisky or a glass of wine. With Scenic's signature all-inclusive ultra-luxury philosophy, indulge in top shelf spirits, over 130 whiskeys, a premium wine list and French champagne.

## At sea

Tag 11

As you cruise towards South Georgia, enjoy a specialty tea or coffee in the Observation Lounge and watch the world float by through Swarovski telescopes.

Choose one of up to 10 dining experiences and spend time with newly made friends – enjoy a casual lunch at Azure Bar & Café and an elegant dinner at Elements. At night, enjoy a performance in the state-of-the-art theatre before you retreat to your ultra-luxury suite with a nightcap.

## South Georgia

Between the 3000-metre mountain range that forms the spine of South Georgia Island, shattered glaciers carve their way through tussock grass to the deeply indented coastline.

Tag 12

A possible landing site is Fortuna Bay^^, which has panoramic views of jagged summit peaks and remarkable König Glacier. You may also visit Salisbury Plain^^, home to the world's second largest King penguin of more than 250,000. Stand in an amphitheatre of snow-capped mountains to watch the colonies. Elephant and fur seals also frequent the three-kilometre-long pebble beach. Once on the brink of extinction, populations have rebounded since hunting was banned in the 1960s.

**Discovery:** Today you may have the chance to explore this fascinating landscape on the fleet of custom-built Zodiacs and kayaks. Your expert Polar Discovery Team will take you on enlightening excursions that put you close to South Georgia's stunning wildlife and nature.

## South Georgia

Prepare to be amazed by the abundant wildlife that calls South Georgia home. With your camera and binoculars ready, you may have the chance to witness incredible scenes unfold before your eyes. From the majestic presence of thousands of king penguins reclaiming their territory to the sight of elephant seals and male fur seals staking their claim on the beaches early in the season, every moment promises an unforgettable experience.

Tag 13

**Discovery:** When enjoying daily Scenic Discovery excursions, ask for your expert Discovery Leader for photography tips and guidance on how to spot the wildlife around you. They will help you immortalise these incredible moments while cruising on the Zodiacs, kayaking and stand-up paddleboarding around impressive ice formations.

## South Georgia

Beyond its remarkable wildlife, South Georgia Island is steeped in a fascinating human legacy. You may get the chance to pay your respects to Sir Ernest Shackleton, the renowned explorer, at his final resting place in the settlement of Grytviken\*. Here, you can also see the remnants of old whaling stations, with some ships left rusting around the bay.

Tag 14

**Discovery:** Partake in daily Scenic Discovery excursions. Cruise on the Zodiacs around ice formations, step onto islands to view vast penguin rookeries and seals. Kayak and stand-up paddleboard around icebergs and hear the ice cracking and whales feeding below.

## South Georgia

Undoubtedly one of the most beautiful places in the world, South Georgia was rightfully nicknamed the 'Galápagos of the Poles'. Watch for giant petrels and brown skuas as they soar above and playful fur seals in underwater kelp forests.

Tag 15

Go on nature hikes with the Polar Discovery Team to find penguin colonies and other remarkable Antarctic wildlife. Alternatively, stand on the Observation Terrace or your private verandah as Scenic Eclipse cruises through the pristine icy landscape. Use your complimentary binoculars to spot whales, snow petrels, and more.

## At sea

After days of exploration, spend time relaxing in your spacious suite. Delve into an insightful conversation with one of our Polar Discovery Team members after an educational lecture in the state-of-the-art theatre or simply watch as the world slips by as you rug up and relax in a cabana on Deck 10.

Tag 16

Have you visited the bridge yet? Thanks to the Captain's open bridge policy, guests are welcome any time to learn more about the technical abilities of The World's First Discovery Yacht and see it in full operation. The bridge is also one of the best viewing areas on the ship.

## At sea

Tag 17

After a restorative night of rest in your luxurious suite, today is yours to spend exactly as you wish. You might ask the butler for breakfast in bed or wish to spend a quiet morning on your verandah with a book, surrounded by the serenity of the ocean.

Make sure you book a treatment# at the tranquil Senses Spa before your Discovery expedition ends. Perhaps an ESPA facial# or an alternative therapy including Ayurvedic massage or Japanese shiatsu. Afterwards, hold on to that feeling of calm for a while longer in the Zen-like space of the Vitality Lounge.

## Falkland Island (Malvinas)

Tag 18

Remote and sparsely populated, the Falkland Islands are a wildlife lover's paradise. The world's largest population of Gentoo penguins is found here, in addition to King, Magellanic and rockhopper penguins. Watch as they waddle along, interacting with each other.

You can also find black-browed albatross, plus Cobb's wren and Falkland's flightless steamer duck, which are both endemic bird species. Make sure to ask for some wildlife insights from the expert Polar Discovery Team – comprised of up to 20 members, this team of geologists, historians, ornithologists, marine biologists, and glaciologists is at the heart of your Antarctic Voyage.

**Discovery:** Daily experiences during your expedition voyage may include cruising on Zodiacs, stepping ashore to view vast penguin rookeries or historic huts, and kayaking around icebergs. Wherever your voyage takes you, you will have countless "pinch me" moments.

## Falkland Island (Malvinas)

Tag 19

While in the Falkland Islands, you will likely visit Stanley^^, the capital of the archipelago. Since its colonisation in the 18th century, the ownership of the Falkland Islands has been clouded in controversy between France, Britain, Spain and Argentina. This town offers a unique British outpost feel. Visit an array of local shops, see the Christ Church Cathedral with its whalebone arch, or share a pint with friendly locals at an English pub.

Tonight could be the night you meet your new friends at Sushi\* @ Koko's for dinner. Enjoy entertainment in the state-of-the-art theatre and unwind with a nightcap at the Scenic Lounge Bar.

## At sea

Tag 20

The state-of-the-art theatre on Deck 4 is the hub for on board entertainment. The advanced cinemascope technology and multiple viewing screens create an immersive 270-degree experience, complete with a sparkly night sky ceiling. You'll be sitting in supremely comfortable reclining lounge chairs and a full range of drinks is available from the attentive waiters.

During the day, the theatre hosts talks and lectures from the Polar Discovery Team, as well as movies and documentaries. At night, it transforms into a glittering entertainment venue showcasing world-class productions from musical theatre and cabaret to pop music, dance and fun interactive game shows.

## At sea

Tag 21

After days of enriching discoveries, this morning it's time to reflect on your journey. Ask the butler to bring your morning coffee, then gather your new friends for a gym session in the state-of-the-art POWER: gym, and end with a deeply healing Tibetan Sound Bowl Meditation Class. Sit down for a delicious lunch together, where you can share photos and travel experiences as you recall your favourite memories from these awe-inspiring weeks on the sea traversing continents.

Later tonight, raise a glass to an unforgettable voyage at one of the up to nine bars and lounges across the ship.



## At sea

Tag 22

This is your final day on board Scenic Eclipse, so take the time to return to your favourite spots. That might mean a dip in the Vitality Pool followed by some time in one of the shaded oceanfront cabanas. Enjoy one last session in the heated therapy lounge or stretch out your sea legs in a Pilates class.

Return to your favourite restaurant with your new friends or indulge in a private dinner in your verandah. Enjoy a nightcap in one of the bars and lounges and arrange for the butler to bring you coffee in your suite the next morning.

## Buenos Aires

Your voyage ends this morning as you farewell the crew and fellow guests. Disembark after breakfast, taking away memories of a truly unforgettable experience.

Please book your flight to depart out of Buenos Aires after 12:00 PM.

Tag 23

The itinerary is a guide only and may be amended for operational reasons. As such Scenic cannot guarantee the voyage will operate unaltered from the itinerary stated above. Please refer to our terms and conditions for further information.

<sup>^</sup>Reservation Required

<sup>^^</sup>Subject to weather and operational conditions. Sightings cannot be guaranteed.

<sup>^</sup>Flights on board our two helicopters and submersible experiences are at additional cost, subject to regulatory approval, availability, weight restrictions, medical approval and weather, ice and tidal conditions. Helicopter not available in South. #Spa treatments at additional cost. +All drinks on board, including those stocked in your mini bar, are included, except for a very small number of rare, fine and vintage wines, Champagnes and spirits.

#### **Im Preis inbegriffen**

- Services und Annehmlichkeiten an Bord
- Maximal 229 Gäste an Bord (200 in den Polarregionen)
- Großzügige Suiten mit privater Veranda 2:1-Verhältnis
- Gäste- und Butlerservice für jeden Gast
- Zehn kulinarische Erlebnisse in neun Gourmet-Menues – von gemütlicher Atmosphäre bis zum eleganten Fine Dining
- Auswahl an Premium-Markengetränken mit über 101 Whiskysorten
- Scenic Discovery Ausflüge mit dem Zodiac
- Komplettes Kajakprogramm und Stand-up-Paddle-Boarding
- Kostenloser Expeditionsarka und Wasserflasche sowie die Nutzung von speziellen Polartiefeln
- Interessantes Vortrags- und Bildungsprogramm mit Experten an Bord
- Spezielle Observation Lounge und Terrasse für die beste Aussicht
- Swarovski-Teleskope an Deck sowie Ferngläser in der Suite, damit Sie keinen aufregenden Momente verpassen
- Senses Spa\*\* auf 551 m<sup>2</sup> mit Fitnesscenter, Yoga- und Pilatesstudio
- Außen-Vitalpools nachskandinavischem Vorbild
- Modernes Theater mittäglichem Unterhaltungs- und Bildungsangebot
- WLAN inclusive
- Inlandsflüge inkl. Gebühren
- Flughafentransfers
- Trinkgelder an Bord und an Land

---

#### **Nicht im Preis inbegriffen**

- Internationale Flüge, sofern nicht angegeben
- Reiseversicherungen
- Visa- oder Passgebühren (falls erforderlich)
- persönliche Ausgaben (Einkäufe, optionale Ausflüge)
- sonstige im Programm nicht genannte Leistungen

## Ihr Schiff

Ihr Schiff ist die "Scenic Eclipse". Ausführlich stellen wir Ihnen dieses Schiff auf unseren Schiffseiten vor. [Ausführliche Informationen](#) zu diesem Schiff.

Passagiere

199

Bordsprachen



Eisklasse

PC-6

Special

Helikopter

