

IHRE REISE

## Antarktis, Südgeorgien und Falklandinseln

Reiseterrin <b>26.01.2026 - 14.02.2026</b>	Reisedauer <b>20 Tage</b>	Reederei / Schiff <b>Scenic Eclipse / SCENIC Luxury Cruises &amp; Tours</b>
---	------------------------------	--



### Scenic Eclipse Deluxe Veranda Suite BA, Deck 7



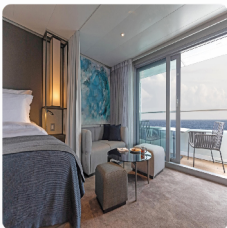
Doppelbelegung

  
**€32.395**  
 pro Person

Einzelbelegung

  
**€63.685**  
 pro Person

### Scenic Eclipse Grand Deluxe Veranda Suite DD, Deck 5



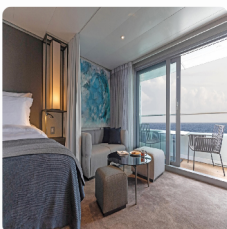
Doppelbelegung

  
**€32.935**  
 pro Person

Einzelbelegung

  
**€64.765**  
 pro Person

### Scenic Eclipse Grand Deluxe Veranda Suite AD, Deck 8



Doppelbelegung

  
 Nicht verfügbar

Einzelbelegung

  
 Nicht verfügbar

Scenic Eclipse Deluxe Veranda Suite AA, Deck 7



*Doppelbelegung*



Nicht verfügbar

*Einzelbelegung*



Nicht verfügbar

Scenic Eclipse Veranda Suite D, Deck 5



*Doppelbelegung*



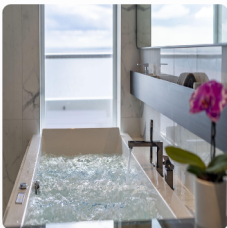
Nicht verfügbar

*Einzelbelegung*



Nicht verfügbar

Scenic Eclipse Spa Suite SA, Deck 9



*Doppelbelegung*



Nicht verfügbar

*Einzelbelegung*



Nicht verfügbar

Scenic Eclipse Panorama Suite P, Deck 8



*Doppelbelegung*



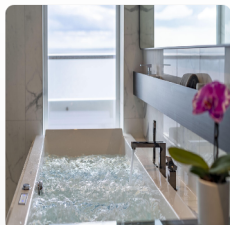
Nicht verfügbar

*Einzelbelegung*



Nicht verfügbar

Scenic Eclipse Spa Suite S, Deck 8



*Doppelbelegung*



Nicht verfügbar

*Einzelbelegung*



Nicht verfügbar

Scenic Eclipse Veranda Suite A, Deck 8



*Doppelbelegung*



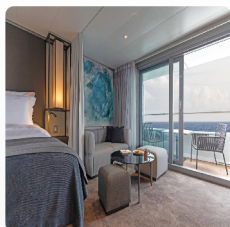
Nicht verfügbar

*Einzelbelegung*



Nicht verfügbar

Scenic Eclipse Grand Deluxe Veranda Suite CD, Deck 6



*Doppelbelegung*



Nicht verfügbar

*Einzelbelegung*



Nicht verfügbar

Scenic Eclipse Owners Penthouse Suite OP, Deck 9



*Doppelbelegung*



Nicht verfügbar

*Einzelbelegung*



Nicht verfügbar

Scenic Eclipse Grand Panorama Suite GP, Deck 6



Doppelbelegung



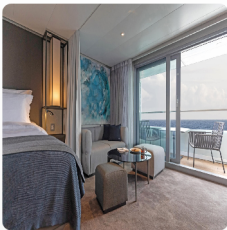
Nicht verfügbar

Einzelbelegung



Nicht verfügbar

Scenic Eclipse Grand Deluxe Veranda Suite BD, Deck 7



Doppelbelegung



Nicht verfügbar

Einzelbelegung



Nicht verfügbar

Scenic Eclipse Veranda Suite B, Deck 7



Doppelbelegung



Nicht verfügbar

Einzelbelegung



Nicht verfügbar

Scenic Eclipse Deluxe Veranda Suite DB, Deck 5



Doppelbelegung



Nicht verfügbar

Einzelbelegung



Nicht verfügbar



Scenic Eclipse Veranda Suite C, Deck 6



*Doppelbelegung*



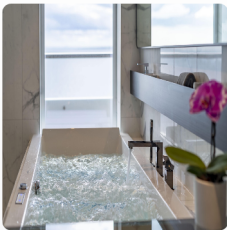
Nicht verfügbar

*Einzelbelegung*



Nicht verfügbar

Scenic Eclipse Spa Suite SB, Deck 9



*Doppelbelegung*



Nicht verfügbar

*Einzelbelegung*



Nicht verfügbar

Scenic Eclipse Deluxe Veranda Suite CA, Deck 6



*Doppelbelegung*



Nicht verfügbar

*Einzelbelegung*



Nicht verfügbar

Scenic Eclipse Deluxe Veranda Suite DA, Deck 5



*Doppelbelegung*



Nicht verfügbar

*Einzelbelegung*



Nicht verfügbar

Scenic Eclipse Two-Bedroom Penthouse Suite TP, Deck 9



Doppelbelegung



Nicht verfügbar

Einzelbelegung



Nicht verfügbar



## Buenos Aires, Argentina

Tag 1

Welcome to Buenos Aires, where you'll have an overnight hotel stay. Perhaps plan to spend some time in the city, known as the 'Paris of South America'. Resplendent with Belle Epoque buildings, sidewalk cafes and green spaces, there's the fiery passion of Latin America – a collective love for football, flame-cooked meats (asado) and the tango.

Some of the highlights are La Boca, a colourful, creative mecca with an art walk, and San Telmo, a former aristocratic neighbourhood abandoned during a 19th-century epidemic. Mansions were turned into conventillos (shared housing), boutique hotels, antique shops, and tango clubs, exuding a captivating bohemian vibe.

## Buenos Aires > Ushuaia

Tag 2

From Buenos Aires your included transfer flights will take you to Ushuaia, the main island of Tierra del Fuego and the southernmost city in the world. The Captain and crew will warmly greet you as you board your ultra-luxury Discovery Yacht.

Toast the start of your once-in-a-lifetime expedition as you depart South America and cruise through the calm and scenic Beagle Channel, named so for the ship that carried Charles Darwin on his five-year discovery journey. Admire the dramatic views of the Andean mountains from the comfort of your private verandah or from the Observation Deck with its commanding view of the bow.

## At sea

Tag 3

Today take some time to explore the Discovery Yacht and familiarise yourself with all the areas on board your new ultra-luxury home. Visit the Sky Bar on Deck 10 and step into the tranquil Senses Spa# on Deck 6 with its steam rooms, saunas, and relaxing Salt Therapy Lounge.

Join an introductory presentation about your polar expedition by the Discovery Team in the state-of-the-art theatre. At night, enjoy world-class productions from musical theatre and cabaret to pop music, dance, and fun interactive game shows.

Due to the extraordinary nature of the region, Discovery excursions throughout your Expedition Voyage are dependent on the ice and weather conditions. Your experienced Captain and specialist polar Discovery Team, with extensive experience in the region will craft your voyage to maximise the 18–20 hours of daylight. They will prepare you for your first landing on the White Continent, providing valuable insights and practical information for your polar expedition.

## Falkland Islands

Tag 4

Remote and sparsely populated, the Falkland Islands are a wildlife lover's paradise. The world's largest population of Gentoo penguins is found here, in addition to King, Magellanic and Rockhopper penguins. Watch as they waddle along, interacting with each other.

You can also find black-browed albatross, plus Cobb's wren and Falkland's flightless steamer duck, which are both endemic bird species. Make sure to ask for some wildlife insights from the expert Discovery Team – comprised of up to 20 polar experts this team of geologists, historians, ornithologists, marine biologists, and glaciologists is at the heart of your Antarctic Voyage.

**Scenic Discovery:** Daily experiences during your expedition voyage may include cruising on Zodiacs, stepping ashore to view vast penguin rookeries, kayaking, stand-up paddleboarding, soar above in the helicopter^ and dive below in the submersible^.

## Falkland Islands

Tag 5

While in the Falkland Islands, you'll visit capital Stanley (subject to weather and operational conditions). Since its colonisation in the 18th century, the ownership of the Falkland Islands has been clouded in controversy between France, Britain, Spain and Argentina. This town offers a unique British outpost feel. Visit local shops, see the Christ Church Cathedral with its whalebone arch, or share a pint at an English pub.

Tonight could be the night you meet your new friends at Sushi \*@ Koko's for dinner. Enjoy entertainment in the state-of-the-art theatre and unwind with a nightcap at the Scenic Lounge Bar.

### Scenic Freechoice:

Walk Stanley: take a walking tour of the small capital with an expert local guide for a closer look at life in this rugged location.

Battlefields a Mountain Perspective: visit Falklands War battlegrounds on a Battlefields Tour while admiring the views of the Island.

Stanley Highlights: this tour by coach offers a thorough introduction to the town's key sights and historical landmarks.

Fitz Roy Farm Tour: Start at the Jetty Visitor Center with a brief history of the Falklands, then continue to the shearing shed for a live shearing demonstration, followed by a visit to the Farm Manager's House.

## At sea

Tag 6

Freshly squeezed juice, barista-made coffee or tea delivered to your door by the butler will help start your day. Head to the gym for a workout or the studio for a Pilates class, some guided stretching or aerial yoga. You may wish to book a treatment at the tranquil Senses Spa#. Perhaps an ESPA facial or massage or an alternative therapy including Ayurvedic massage.

Then visit the state-of-the-art theatre to hear Enrichment lectures and IAATO briefings from the Discovery Team.

In the evening, settle in at the spacious Scenic Lounge Bar to enjoy your beverage of choice. With Scenic's signature all-inclusive ultra-luxury philosophy, indulge in top shelf spirits, over 130 whiskeys, a premium wine list and French Champagne.

## At sea

Tag 7

As you cruise towards South Georgia, enjoy a specialty tea or coffee in the Observation Lounge and watch the world float by through Swarovski telescopes.

Choose one of up to 10 dining experiences and spend time with newly made friends – enjoy a casual lunch at Azure Bar & Café and an elegant dinner at Elements. At night, enjoy a performance in the state-of-the-art theatre before you retreat to your ultra-luxury suite with a nightcap.

## South Georgia

Tag 8

Between the 3000-metre mountain range that forms the spine of South Georgia Island, shattered glaciers carve their way through tussock grass to the deeply indented coastline.

Today you'll land at the deserted whaling village of Stromness (subject to weather and operational conditions) where after a gruelling 36-hour hike through the South Georgia Mountains, Sir Ernest Shackleton was helped by the Norwegian whaling station manager.

Next, you'll head to Fortuna Bay (subject to weather and operational conditions) which has panoramic views of jagged summit peaks and remarkable König Glacier.

**Scenic Discovery:** Today you may have the chance to explore this fascinating landscape on Zodiacs, kayaks, stand-up paddleboards, self-pace hike and submersible\* excursions. Your expert Discovery Team will take you on enlightening excursions that put you close to South Georgia's stunning wildlife and nature.

## South Georgia

Tag 9

Pay your respects to the renowned explorer Sir Ernest Shackleton at his final resting place in the settlement of Grytviken. Here, you can also see the remnants of old whaling stations, with some ships left rusting around the bay.

**Scenic Discovery:** Explore by Zodiac, kayak or stand-up paddleboard with possible shore landings (weather and ice permitting).

## South Georgia

Tag 10

At South Georgia's southern tip, Cooper Bay (subject to weather and operational conditions), watch for giant petrels and brown skuas as they soar above and playful fur seals in underwater kelp forests. Climb a short but steep hill to find a macaroni penguin colony hidden among tussock grasses.

**Scenic Discovery:** Explore by Zodiac, kayak, or stand-up paddleboard, with potential shore landings, beach walks, and hikes to historical sites (weather and ice permitting). To further discover South Georgia book a submersible\* experience.

## At sea

Tag 11 After days of exploration, spend time relaxing in your spacious suite. The Discovery Team will help you prepare for your first landing on the White Continent, offering insight and inspiration as well as giving you practical information about your upcoming polar expedition.

Have you visited the bridge yet. Thanks to the Captain's open bridge policy, guests are welcome any time to learn more about the technical abilities of The World's First Discovery Yacht and see it in full operation. The bridge is also one of the best viewing areas on the ship.

## At sea

Tag 12 Today you will enter Antarctic waters, an unpredictable but stunningly beautiful environment that always surprises. Put on your complimentary polar parka and head to the Observation Deck to search for icebergs.

Watch out for whale blows in the distance. Your expert polar Discovery Team will be on hand to provide and answer any insightful information.

In the evening, explore more of the up to 10 all-inclusive dining experiences on board, sampling fine French cuisine at Lumière\* or vibrant Asian fusion at Koko's. Alternatively, relax and dine in the comfort of your suite and have your evening nightcap brought by your butler.

## Antarctica

Tag 13 Slide open the floor-to-ceiling doors of your verandah suite to see icebergs sculpted by nature and glacial mountains rising thousands of metres from the ocean. True magic awaits as you witness the incredible wildlife spectacle: from the graceful seals to majestic whales and delightful colonies of penguins that dot the landscape.

Antarctica is also a birdwatcher's paradise, with more than 40 different species. Keep your eyes peeled for wandering albatrosses, which has the largest wingspan of any flying bird, as well as shearwaters, giant petrels and more.

**Scenic Discovery:** Explore by Zodiac, kayak or stand-up paddleboard with possible shore landings (weather and ice permitting). To see Antarctica from above or below the horizon book a helicopter<sup>^</sup> or a submersible<sup>^</sup> experience.

## Antarctica

Tag 14 Experience the awe-inspiring beauty of Brown Bluff (subject to weather and operational conditions), where towering canyon walls, dramatic boulders, and ice-capped volcanic wonders create a landscape like no other. Just across the Antarctic Sound lies Kinnes Cove (subject to weather and operational conditions), where the striking red hues of the Madder Cliffs paint a picture of untouched beauty. Keep your eyes peeled—you might just be lucky enough to encounter charming Gentoo penguins in their natural habitat. This is adventure redefined!

**Scenic Discovery:** Enjoy daily Discovery excursions. Cruise on the Zodiacs around ice formations, step onto islands to view vast penguin rookeries and seals. Kayak or stand-up paddleboard past icebergs and hear the ice cracking and whales feeding below. Soar above the horizon in the helicopter<sup>^</sup> or dive below in the submersible<sup>^</sup> for further discovery.

## Antarctica

Around 12 million penguins can be found living on the Antarctic Peninsula, including Adélie, Chinstrap, Gentoo, and the very rare Emperor penguins. Guided by the expert polar Discovery Team, you'll witness colonies up close; hear their mighty calls and watch as they clumsily waddle along and interact with each other.

Tag 15

Whales are another majestic creature you may encounter, whether a minke, a humpback or an orca. Watch them from the comfort of your ultra-luxury Discovery Yacht, in a Zodiac with an expert polar Discovery Team member, or from their level in a kayak or stand-up paddleboard – a breathtaking experience.

**Scenic Discovery:** When enjoying daily Scenic Discovery excursions, ask for your expert Discovery Leader for photography tips and guidance on how to spot the wildlife around you. They will help you enjoy these incredible moments while cruising on the Zodiacs, kayaking and stand-up paddleboarding around impressive ice formations, and don't miss out on the opportunity for flightseeing and Submersible exploration dives.

Explore by Zodiac, kayak or stand-up paddleboard with possible shore landings (weather and ice permitting). To see Antarctica from above or below the horizon book a helicopter<sup>^</sup> or a submersible<sup>^</sup> experience.

## Antarctica

Tag 16

Lemaire Channel (subject to weather and operational conditions), renowned for its picturesque views and often referred to as 'Kodak Alley'. If during your voyage your Discovery Yacht weaves through this channel, make sure you set your alarm and embrace the cool air from the Observation Terrace. Pass through the 11-kilometre-long channel, just 700 metres wide at its narrowest point, and be amazed at the dramatic rocky mountains and glowing blue icebergs so close to the ship.

In between Scenic Discovery excursions, enjoy a specialty tea or coffee in the Observation Lounge and watch the world float by through Swarovski telescopes.

## Antarctica

Tag 17

The polar plunge is a once-in-a-lifetime opportunity and a rite of passage on an expedition to Antarctica. Once throughout your voyage, the marina will be set up for anyone who'd like to jump into the Antarctic waters.

As you stand on the edge, ready to jump, you'll feel the adrenaline rush. When you jump, an invigorating, exciting and surprisingly refreshing sensation will take over.

If you choose to skip the polar plunge, make sure you find a good viewing location to watch the chilly jumpers emerge. Join them for a cup of hot chocolate or a glass of whiskey.

**Scenic Discovery:** Explore by Zodiac, kayak or stand-up paddleboard with possible shore landings (weather and ice permitting). To see Antarctica from above or below the horizon book a helicopter<sup>^</sup> or a submersible<sup>^</sup> experience.

## At sea

Tag 18

Cruising the Drake Passage back to the tip of South America, there is plenty of time to indulge in the ultra-luxury of your Discovery Yacht and reflect on the magic moments you've experienced in the Southern Ocean.

Curl up in one of the private cabanas on Deck 10 with a book or meet friends for a coffee or glass of wine in the Observation Lounge on Deck 5, where you'll be enchanted by the endless horizons of the ocean from the panoramic glass windows.

## At sea > Ushuaia

Tag 19

This is your final day on board your Discovery Yacht, so take the time to return to your favourite spots. That might mean one last treatment# in the luxurious Senses Spa or stretching out in a class at the PURE: Yoga & Pilates Studio.

Sit down for lunch with your new friends as you recall your favourite memories from your time on the seventh continent. Tonight, raise a glass to an unforgettable voyage at the spacious Scenic Lounge Bar. Enjoy your beverage of choice, whether it be aged whiskey or a glass of wine. Scenic Eclipse will arrive in Ushuaia, the main island of Tierra del Fuego and the southernmost city in the world, late this evening.

## Ushuaia, Argentina > Buenos Aires

Tag 20

Your voyage ends this morning as you farewell the crew and fellow guests. Disembark after breakfast for your included transfer flight to Buenos Aires, taking away memories of a truly unforgettable experience.

Please book your flight to depart out of Buenos Aires after 09:30 PM.

^Flights on board our two helicopters and submersible experiences are at additional cost, subject to regulatory approval, availability, weight restrictions, medical approval and weather, ice and tidal conditions. Helicopter not available in South Georgia. #Spa treatments at additional cost. +All drinks on board, including those stocked in your mini bar, are included, except for a very small number of rare, fine and vintage wines, Champagnes and spirits. \*Specialty restaurants require a reservation, enquire on board.

The itinerary is a guide only and may be amended for operational reasons. As such Scenic cannot guarantee the voyage will operate unaltered from the itinerary stated above. Locations listed within South Georgia, Falkland Islands and Antarctica are subject to weather and operational conditions. Sightings cannot be guaranteed. Please refer to our terms and conditions for further information.



#### **Im Preis inbegriffen**

- Services und Annehmlichkeiten an Bord
- Maximal 229 Gäste an Bord (200 in den Polarregionen)
- Großzügige Suiten mit privater Veranda 2:1-Verhältnis
- Gäste- und Butlerservice für jeden Gast
- Zehn kulinarische Erlebnisse in neun Gourmet-Menues – von gemütlicher Atmosphäre bis zum eleganten Fine Dining
- Auswahl an Premium-Markengetränken mit über 101 Whiskysorten
- Scenic Discovery Ausflüge mit dem Zodiac
- Komplettes Kajakprogramm und Stand-up-Paddle-Boarding
- Kostenloser Expeditionsarka und Wasserflasche sowie die Nutzung von speziellen Polartiefeln
- Interessantes Vortrags- und Bildungsprogramm mit Experten an Bord
- Spezielle Observation Lounge und Terrasse für die beste Aussicht
- Swarovski-Teleskope an Deck sowie Ferngläser in der Suite, damit Sie keinen aufregenden Momente verpassen
- Senses Spa\*\* auf 551 m2 mit Fitnesscenter, Yoga- und Pilatesstudio
- Außen-Vitalpools nachskandinavischem Vorbild
- Modernes Theater mittäglichem Unterhaltungs- und Bildungsangebot
- WLAN inclusive
- Inlandsflüge inkl. Gebühren
- Flughafentransfers
- Trinkgelder an Bord und an Land

---

#### **Nicht im Preis inbegriffen**

- Internationale Flüge, sofern nicht angegeben
- Reiseversicherungen
- Visa- oder Passgebühren (falls erforderlich)
- persönliche Ausgaben (Einkäufe, optionale Ausflüge)
- sonstige im Programm nicht genannte Leistungen

## Ihr Schiff

Ihr Schiff ist die "Scenic Eclipse". Ausführlich stellen wir Ihnen dieses Schiff auf unseren Schiffseiten vor. [Ausführliche Informationen](#) zu diesem Schiff.

Passagiere

199

Bordsprachen



Eisklasse

PC-6

Special

Helikopter

