

IHRE REISE

*Antarktische Halbinsel intensiv*

Reisetermin

02.02.2028 - 14.02.2028

Reisedauer

13 Tage

Reederei / Schiff

Scenic Eclipse II / SCENIC Luxury Cruises & Tours



Scenic Eclipse II Veranda Suite C, Deck 6



Doppelbelegung



€ 18.845

pro Person

Einzelbelegung



€ 38.420

pro Person

Scenic Eclipse II Veranda Suite A, Deck 8



Doppelbelegung



€ 20.935

pro Person

Einzelbelegung



€ 42.600

pro Person

Scenic Eclipse II Deluxe Veranda Suite CA, Deck 6



Doppelbelegung



€ 21.045

pro Person

Einzelbelegung



€ 42.820

pro Person

Scenic Eclipse II Deluxe Veranda Suite AA, Deck 7



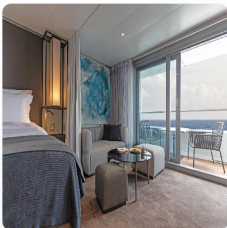
Doppelbelegung

  
**€21.595**  
 pro Person

Einzelbelegung

  
**€43.920**  
 pro Person

Scenic Eclipse II Grand Deluxe Veranda Suite CD, Deck 6



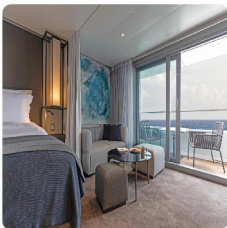
Doppelbelegung

  
**€22.255**  
 pro Person

Einzelbelegung

  
**€45.240**  
 pro Person

Scenic Eclipse II Grand Deluxe Veranda Suite AD, Deck 8



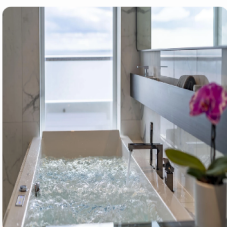
Doppelbelegung

  
**€22.750**  
 pro Person

Einzelbelegung

  
**€46.230**  
 pro Person

Scenic Eclipse II Spa Suite S, Deck 8



Doppelbelegung

  
**€26.160**  
 pro Person

Einzelbelegung

  
**€53.050**  
 pro Person

Scenic Eclipse II Spa Suite SA, Deck 9



Doppelbelegung

  
**€ 26.380**  
 pro Person

Einzelbelegung

  
**€ 53.490**  
 pro Person

Scenic Eclipse II Panorama Suite P, Deck 8



Doppelbelegung

  
**€ 39.690**  
 pro Person

Einzelbelegung

  
**€ 80.110**  
 pro Person

Scenic Eclipse II Grand Panorama Suite GP, Deck 6



Doppelbelegung

  
**€ 42.440**  
 pro Person

Einzelbelegung

  
**€ 85.610**  
 pro Person

Scenic Eclipse II Owners Penthouse Suite OP, Deck 9



Doppelbelegung

  
**€ 46.620**  
 pro Person

Einzelbelegung

  
**€ 93.970**  
 pro Person

Scenic Eclipse II Veranda Suite B, Deck 7



*Doppelbelegung*



Nicht verfügbar

*Einzelbelegung*



Nicht verfügbar

Scenic Eclipse II Veranda Suite D, Deck 5



*Doppelbelegung*



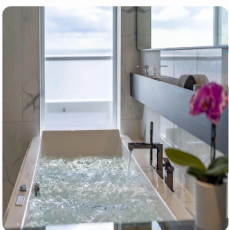
Nicht verfügbar

*Einzelbelegung*



Nicht verfügbar

Scenic Eclipse II Spa Suite SB, Deck 9



*Doppelbelegung*



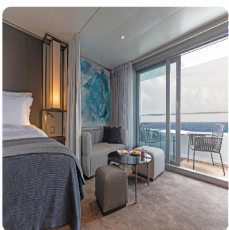
Nicht verfügbar

*Einzelbelegung*



Nicht verfügbar

Scenic Eclipse II Grand Deluxe Veranda Suite BD, Deck 7



*Doppelbelegung*



Nicht verfügbar

*Einzelbelegung*



Nicht verfügbar

Scenic Eclipse II Two-Bedroom Penthouse Suite TP, Deck 9



*Doppelbelegung*



Nicht verfügbar

*Einzelbelegung*



Nicht verfügbar

Scenic Eclipse II Deluxe Veranda Suite DB, Deck 5



*Doppelbelegung*



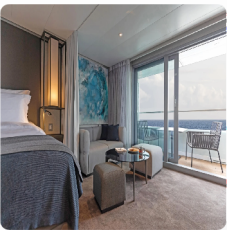
Nicht verfügbar

*Einzelbelegung*



Nicht verfügbar

Scenic Eclipse II Grand Deluxe Veranda Suite DD, Deck 5



*Doppelbelegung*



Nicht verfügbar

*Einzelbelegung*



Nicht verfügbar

Scenic Eclipse II Deluxe Veranda Suite BA, Deck 7



*Doppelbelegung*



Nicht verfügbar

*Einzelbelegung*



Nicht verfügbar

Scenic Eclipse II Deluxe Veranda Suite DA, Deck 5



Doppelbelegung



Nicht verfügbar

Einzelbelegung



Nicht verfügbar



## Buenos Aires, Argentina

Tag 1

Welcome to Buenos Aires, where you'll stay overnight. Perhaps plan to spend some time in the city, nicknamed the 'Paris of South America'. Resplendent with Belle Époque buildings, sidewalk cafes and green spaces, there's the fiery passion of Latin America – a collective love for football, flame-cooked meats (asado) and the tango.

Some of the highlights are La Boca, a colourful, creative mecca with a must-do art walk, and San Telmo, a former aristocratic neighbourhood abandoned during a 19th-century epidemic. Mansions were turned into conventillos (shared housing), boutique hotels, antique shops, and tango clubs, exuding a captivating bohemian vibe. Enjoy an overnight stay at your hotel.

## Buenos Aires > Ushuaia

Tag 2

Depart Buenos Aires on an exclusive charter flight to Ushuaia the gateway to Antarctica and the world's southernmost city, nestled on the rugged shores of Tierra del Fuego. The Captain and crew will warmly greet you as you board your ultra-luxury Discovery Yacht. Raise a glass of Champagne as you set sail through the legendary Beagle Channel, tracing the path of Charles Darwin's historic voyage. From your private verandah or the Observation Deck, take in breathtaking views of the snow-capped Andean peaks and pristine Patagonian wilderness—marking the beginning of an unforgettable expedition.

## At Sea

Tag 3

Enjoy breakfast in your suite as your ultra-luxury Discovery Yacht navigates the legendary Drake Passage bound for Antarctica. Take in the vast expanse of the Southern Ocean as moment brings you closer to an unforgettable adventure.

Feel the excitement building up as the Discovery Team shares with you all the details on how your Zodiac, helicopter<sup>^</sup>, submarine<sup>^</sup> and other discovery expeditions will work. Get familiar with the team and your polar equipment – your expedition kit includes an expedition parka and water bottle that are yours to take home, plus the use of specialised polar boots, trekking poles and specific equipment you need for kayak and paddleboard excursions. Between landings, your outdoor gear will be stored in a personal locker in our convenient Discovery Centre. Prepare yourself for unparalleled 'pinch-me' moments, and be exposed to the unpredictability of the region, with your expert team deciding the course of action in the coming days.

The team will make every attempt to have many landings and Discovery Excursions, including Zodiac tours, kayaking and optional helicopter<sup>^</sup> flights and submarine<sup>^</sup> dives.

## Antarctica

Tag 4

Today you will enter Antarctic waters, an unpredictable but stunningly beautiful environment. Put on your complimentary polar parka and head to the Observation Deck to spot icebergs for the first time – it's a feeling that will stay with you forever.

Watch out for whale blows in the distance. Your Discovery Team is available to provide insightful information.

Be sure to check your daily program for the essential biosecurity and boot fitting schedule. And join the fascinating enrichment lecture on marine and seabird life – a captivating experience that will enhance your knowledge and connection to the natural world around you.

## Antarctica

Tag 5

Slide open the floor-to-ceiling doors of your verandah suite to see icebergs sculpted by nature and glacial mountains rising from the ocean. Antarctica is a birdwatcher's delight, home to a variety of species, so keep your eyes peeled for wandering albatrosses, shearwaters, giant petrels and more.

Due to the extraordinary nature of the region, excursions throughout your Expedition Voyage are dependent on weather conditions. Your experienced Captain and Discovery Leader, who have made countless journeys to Antarctica, will use their expertise to design a bespoke voyage, making the most of your time in this spectacular destination.

### Scenic Discovery:

Daily experiences may include cruising on Zodiacs, stepping ashore to view vast penguin rookeries or historic huts, and kayaking or paddle boarding around icebergs. Wherever your voyage takes you, you will have countless "pinch me" moments.

## Antarctica

Tag 6 Start your day with freshly squeezed juice, steaming barista-made coffee or tea delivered to your door by your butler. Then set out on Zodiac excursions to explore breathtaking glaciated bays, tranquil channels and pristine landing sites. As you trek across the Antarctic wilderness, meet the adorable chinstrap, Adélie and gentoo penguins that inhabit this magical region

Small groups offer the best way to experience an environmentally sensitive destination like Antarctica. Guests will board the zodiacs according to their designated colour, where our expert polar Discovery Team will guide them, ensuring an unforgettable and unique adventure.

## Antarctica

Tag 7 Various species of penguins can be found in Antarctic and the sub-Antarctic region, including Adélie, Chinstrap, Gentoo, and the very rare Emperor. Guided by the expert Discovery Team, you'll witness colonies up close; hear their calls and watch as they clumsily waddle along and interact with each other.

Whales are another majestic creature you may encounter, whether a minke, a humpback or an Orca. Watch them up close in a kayak or a Zodiac with the Discovery Team or observe them from the comfort of your ultra-luxury Discovery Yacht. However, you see them, it's a breathtaking experience.

### Scenic Discovery:

Ask your expert Discovery Leader for photography tips so you can best capture the incredible wildlife and landscape around you.

## Antarctica

Tag 8 From the moment it was discovered, Antarctica has held an irresistible allure for intrepid adventurers. The bold exploits of legendary explorers like Scott, Shackleton, and Amundsen have fueled its mystique, inspiring generations to venture into this untamed wilderness.

On this unforgettable day, you'll cruise past Antarctica's stunning icy mountains before stepping ashore by Zodiac to immerse yourself in the polar wilderness. With ample time to explore, this voyage ensures you experience the magic of this awe-inspiring landscape up close.

Back on board, enjoy a specialty tea or coffee in the Observation Lounge and take in the views through Swarovski telescopes.

## Antarctica

Tag 9 In the untouched silence of this frozen wilderness, nature's rare sounds become unforgettable—whether it's the endearing chatter of penguins squabbling over prized pebbles or the thunderous roar of a glacier calving into the sea.

Towering glaciers provide one of the most awe-inspiring spectacles of your journey, with the chance to witness massive ice formations breaking away, creating brand-new icebergs before your eyes—a moment of pure wonder.

On board, explore some of your Discovery Yacht's indulgent spaces, from the welcoming Observation Lounge to the expansive Senses Spa#. Choose one of up to 10 world-class dining experiences on board tonight.

## Antarctica

Tag 10

On your ultra-luxury yacht, every moment is crafted for both comfort and connection. Our inviting lounge provides the perfect setting to unwind and share unforgettable experiences with like-minded travellers.

For those craving adventure, the legendary Polar Plunge offers a thrilling rush—an unforgettable dive into icy waters, expertly coordinated by the Expedition Leader and Captain.

If you prefer to stay warm, find a prime viewing spot and enjoy the spectacle as fellow guests take the plunge, then join them for a toast with a glass of whiskey or a steaming cup of hot chocolate.

### Scenic Discovery:

Glide past towering icebergs on a zodiac, step onto untouched white snow, and soar over vast mountain ranges. This is one of the world's few remaining pristine wildernesses, awaiting your exploration.

## At Sea

Tag 11

As you cruise back across the Drake Passage toward South America, take this time to indulge in the ultra-luxury comforts of your Discovery Yacht and reflect on the awe-inspiring moments you've experienced.

Start your day with an invigorating workout in the state-of-the-art gym, a guided Pilates session, or a moment of relaxation in the PURE: Yoga & Pilates Studio.

As evening arrives, unwind in the elegant Scenic Lounge Bar, where you can toast to your expedition with a perfectly aged whiskey, a glass of fine wine, or a flute of French Champagne—all part of Scenic's truly all-inclusive ultra-luxury philosophy.

## At Sea > Ushuaia

Tag 12

Make sure you book a treatment# at the tranquil Senses Spa before your expedition ends. Perhaps an ESPA facial or massage# or an alternative therapy including Ayurvedic massage or Japanese shiatsu. Afterwards, hold on to that feeling of calm for a while longer in the Zen-like space of the Vitality Lounge.

On your last night onboard for dinner choose from Koko's Asian Fusion Sushi @ Koko's (available by on board reservation) to watch the chefs at work or enjoy the spectacle of teppanyaki-style dining inspired by the markets of Asia at Night Market @ Koko's (available by on board reservation).

## Ushuaia, Argentina > Buenos Aires

Tag 13

This morning, bid farewell to your expert crew and fellow travellers as your extraordinary journey comes to an end. After a final indulgent breakfast on board, disembark in Ushuaia and board your flight to Buenos Aires, carrying with you memories of an unforgettable adventure in the pristine landscapes of Antarctica.

Please book your flight to depart out of Buenos Aires after 09:30 PM.

#Spa treatments at additional cost. +All drinks on board, including those stocked in your mini bar, are included, except for a very small number of rare, fine and vintage wines, Champagnes and spirits. Specialty restaurants require a reservation, enquire on board. ^Flights on board our two helicopters and submersible experiences are at additional cost, subject to regulatory approval, availability, weight restrictions, medical approval and weather conditions. Sightings cannot be guaranteed.

The itinerary is a guide only and may be amended for operational reasons. As such Scenic cannot guarantee the voyage will operate unaltered from the itinerary stated above. Please refer to our terms and conditions for further information.

#### **Im Preis inbegriffen**

- Services und Annehmlichkeiten an Bord
- Maximal 229 Gäste an Bord (200 in den Polarregionen)
- Großzügige Suiten mit privater Veranda 2:1-Verhältnis
- Gäste- und Butlerservice für jeden Gast
- Zehn kulinarische Erlebnisse in neun Gourmet-Menues – von gemütlicher Atmosphäre bis zum eleganten Fine Dining
- Auswahl an Premium-Markengetränken mit über 101 Whiskysorten
- Scenic Discovery Ausflüge mit dem Zodiac
- Komplettes Kajakprogramm und Stand-up-Paddle-Boarding
- Kostenloser Expeditionsparaka und Wasserflasche sowie die Nutzung von speziellen Polartiefeln
- Interessantes Vortrags- und Bildungsprogramm mit Experten an Bord
- Spezielle Observation Lounge und Terrasse für die beste Aussicht
- Swarovski-Teleskope an Deck sowie Ferngläser in der Suite, damit Sie keinen aufregenden Momente verpassen
- Senses Spa\*\* auf 551 m<sup>2</sup> mit Fitnesscenter, Yoga- und Pilatesstudio
- Außen-Vitalpools nachskandinavischem Vorbild
- Modernes Theater mittäglichem Unterhaltungs- und Bildungsangebot
- WLAN inclusive
- Inlandsflüge inkl. Gebühren
- Flughafentransfers
- Trinkgelder an Bord und an Land

---

#### **Nicht im Preis inbegriffen**

- Internationale Flüge, sofern nicht angegeben
- Reiseversicherungen
- Visa- oder Passgebühren (falls erforderlich)
- persönliche Ausgaben (Einkäufe, optionale Ausflüge)
- sonstige im Programm nicht genannte Leistungen

*Ihr Schiff*

Ihr Schiff ist die "Scenic Eclipse II". Ausführlich stellen wir Ihnen dieses Schiff auf unseren Schiffseiten vor. [Ausführliche Informationen zu diesem Schiff.](#)

Passagiere  
199

Bordsprachen  


Eisklasse  
PC-6

Special  
Helikopter

