

IHRE REISE

*Antarktis-Expedition mit
 Helikopter: Antarktische
 Halbinsel und Überquerung des
 Polarkreises*

Reisetermin
 17.02.2028 - 01.03.2028

Reisedauer
 14 Tage

Reederei / Schiff
 Ultramarine / Quark Expeditions



Explorerer Dreibettkabine



Dreibettbelegung



€ 13.975

pro Person

Dreibettbelegung



€ 14.711

pro Person

Gemeinschaftsbelegung



€ 13.975

pro Person

Gemeinschaftsbelegung



€ 14.711

pro Person

Explorerer Suite



Doppelbelegung



€ 16.540

pro Person

Doppelbelegung



€ 17.411

pro Person

Einzelbelegung



€ 28.687

pro Person

Einzelbelegung



€ 30.197

pro Person

Gemeinschaftsbelegung



€ 16.540

pro Person

Gemeinschaftsbelegung



€ 17.411

pro Person

Ultramarine Balkon Suite



Doppelbelegung


€ 18.335
 pro Person

Doppelbelegung


€ 19.301
 pro Person

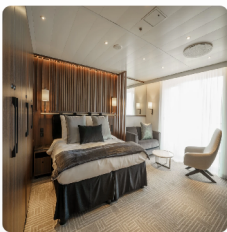
Einzelbelegung


€ 31.739
 pro Person

Einzelbelegung


€ 33.410
 pro Person

Deluxe Balkon Suite



Doppelbelegung


€ 21.841
 pro Person

Doppelbelegung


€ 22.991
 pro Person

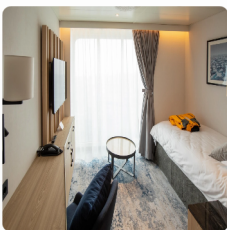
Einzelbelegung


€ 44.494
 pro Person

Einzelbelegung


€ 46.836
 pro Person

Panorama Einzelkabine



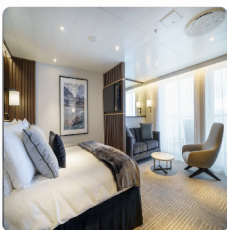
Einzelbelegung


€ 23.465
 pro Person

Einzelbelegung


€ 24.701
 pro Person

Penthouse Suite



Doppelbelegung


€ 24.320
 pro Person

Doppelbelegung


€ 25.601
 pro Person


Einzelbelegung






€ 49.453
 pro Person

Einzelbelegung



€ 52.056
 pro Person





Owner's Suite




<i>Doppelbelegung</i>	<i>Doppelbelegung</i>	<i>Einzelbelegung</i>	<i>Einzelbelegung</i>
			
€ 30.476	€ 32.081	€ 61.765	€ 65.016
pro Person	pro Person	pro Person	pro Person







Ultra Suite



<i>Doppelbelegung</i>	<i>Doppelbelegung</i>	<i>Einzelbelegung</i>	<i>Einzelbelegung</i>
			
€ 33.896	€ 35.681	€ 68.605	€ 72.216
pro Person	pro Person	pro Person	pro Person

Terrace Suite



<i>Doppelbelegung</i>	<i>Doppelbelegung</i>	<i>Doppelbelegung</i>	<i>Einzelbelegung</i>	<i>Einzelbelegung</i>	<i>Einzelbelegung</i>
					
Nicht verfügbar	Nicht verfügbar	Nicht verfügbar	Nicht verfügbar	Nicht verfügbar	Nicht verfügbar



Buenos Aires, Argentina

ARRIVE IN BUENOS AIRES, ARGENTINA

Day 1

Upon arriving in this splendid city, known for its vibrant Argentinian culture, European architecture and cosmopolitan vibe, you will independently transfer to your pre-expedition hotel night, included in your Charter Flight and Hotel Package.

Cruising

FLY TO USHUAIA AND EMBARK

Day 0

After an early breakfast at the hotel, the group will transfer to the airport and board our private charter flight to Ushuaia, Argentina. Upon arrival, you will be transferred to a central downtown location to enjoy some time on your own to explore this quaint port town before making your way to the designated meeting spot near the pier, where you will be transferred to the ship for embarkation. After a late afternoon embarkation, we will sail along the historic Beagle Channel, which transects the Tierra del Fuego archipelago in the extreme south of South America. Expect an air of anticipation as you depart—the next time you see land, you'll be in the remote Antarctic wilderness.

Cruising

CROSSING THE DRAKE: A POLAR RITE OF PASSAGE

Day 3

Crossing the legendary 800-km stretch of water is a must-do for many travelers. Prepare yourself for dramatic seascapes as you stand on the deck of Ultramarine and gaze at the water stretching beyond the distant horizon. Be on the lookout for dolphins, whales and seabirds, especially albatrosses, petrels and skuas as they glide over the sometimes rough waters. As the ship approaches the Antarctic Peninsula, keep your eyes peeled for your first glimpse of towering, multi-shaped icebergs.

Cruising

AT SEA WITH POLAR EXPERTS

Day 4

Today, as we continue crossing the Drake Passage, we experience the Antarctic Convergence, where the warmer waters of the sub-Antarctic meet the cold Antarctic. Your days at sea are filled with presentations led by your Expedition Team on photography, wildlife, glaciology, and history. In between presentations, spend time on deck looking for wildlife or chatting with your shipmates over a drink at the bar.

Cruising

SOUTH SHETLAND ISLANDS AND ANTARCTIC PENINSULA

Days 5 and 6

The most common reaction upon reaching the Antarctic Peninsula is a sense of reverence and awe. The experience is beyond words, since few places are as untouched and enduring as Antarctica. You will begin to appreciate why this region has long captivated the attention of explorers and travelers alike. Every visit to Antarctica, we witness something new or unexpected, which means that your expedition will be unlike any other— creating a unique, personal experience. Each day, you will take Zodiac excursions from the ship to explore local bays, channels and landing sites. You will visit penguin rookeries, scout for humpback and minke whales, and hopefully spot a number of southern seal species, including the elusive leopard seal. Your Expedition Team will take care of you at each landing, whether you are exploring the Antarctic terrain, visiting a research station or consorting with penguin colonies. Chinstrap, Adélie and gentoo penguins are found here, along with five different species of seals. Zodiac cruising can offer opportunities to view some of the larger local marine mammals more intimately, such as Antarctic minke and humpback whales. Days 5 and 6 are also ideal times to experience Ultramarine's portfolio of helicoptersupported adventures exclusive to Quark Expeditions. Your days will be busy spotting wildlife and being mesmerized by the astounding beauty of Antarctica. Listening to the crackling and crumbling of icebergs and glaciers and watching penguins waddling on the beach will become your daily entertainment. That's in addition to the spectacular experience of soaring in a helicopter over the Antarctic landscape.

Cruising

EXPLORE THE ANTARCTIC CIRCLE AND THE SOUTHERN PENINSULA BY WATER, LAND, AND AIR

Days 7 to 9

Helicopter operations in Antarctic are acutely weather-dependent. We have designed this itinerary so we can spend time each day in stunning locations that allow us to enjoy helicopter opportunities if the weather allows and, alternately, to maximize your experience of Antarctic wildlife, ice and landscapes when flying conditions are not favorable. Each day near the Antarctic Circle will showcase the flexibility and technical prowess of our industry-leading expedition team, pilots and crew, who will look for opportunities to experience Antarctica well beyond its coasts. As Ultramarine gains access to the Antarctic Circle, you'll have accomplished an impressive achievement as most expeditions to the Peninsula do not come close to navigating this far south. Toasting the first explorers who ventured here over a century ago, you can raise a glass and take pride in the knowledge you've reached part of the world visited by a relative few. Next on our itinerary are Crystal Sound and Marguerite Bay, which comprise the geographical theater of focus on this incredible venture into the "deep south" of Antarctica. After visiting some of the region's iconic penguin colonies and glacial features, we continue south into Crystal Sound to cross the Antarctic Circle. Crystal Sound is known for its massive expanse of steep mountains that rise directly out of the sea. We hope to visit Detaille Island and, weather-permitting, fly into the mountains of the Antarctic Peninsula at the Antarctic Circle. Our goal is to visit the British Antarctic Survey's historical hut, and the Adélie penguin colony of Detaille Island. We also hope to Zodiac cruise in this area to see the colossal icebergs that formed from the glaciers fed by the snowfall in the coastal mountains of Antarctica. Seals frequently roam this coastal area. There will be time to marvel at the impressive topography, which features Castle Peak, a 2,380 meter (7,800foot) massif. If weather allows, we may add to our marine operations and embark on our flightseeing experiences. What you will have just seen from sea, you will now experience from the sky as you witness the vastness of Antarctica and Crystal Sound. Continuing further south, we'll set out toward Marguerite Bay, which is rich in human history, stunning geological features, and expansive ice fields. The bay is separated from Crystal Sound by Adelaide Island. Ice conditions permitting, we may be able to transit slowly through the narrow passage between the mainland and the island. This channel is known as The Gullet, known for pulsing currents that can lodge and dislodge ice throughout the summer months. Keep your eyes focused off-ship for potential marine mammal sightings. To the west of Adelaide Island, the 70-kilometer-long (43 miles) Fuchs Ice Piedmont stretches out like a long ice tongue to east Arrowsmith Peninsula with multiple peaks rising 1,800 to 2,100 meters (6,000 to 7000 feet). We also hope to explore Debenham Islands, named after Frank Debenham, a member of the advisory committee for the British Graham Land Expedition of 1934-37. The six main islands are named after Debenham's children.

Cruising

NORTHBOUND ALONG THE PENINSULA

Days 10 and 11

By now, your knowledge of Adélie, chinstrap and gentoo penguins will be matched by your ability to differentiate between a leopard, crabeater and Weddell seal. Terms like 'bergy bits' and 'pancake ice' will become part of your vocabulary. As you head north, Zodiac excursions will occupy your days, and your Expedition Team will continue looking out for species of seabirds, seals and whales that may have eluded us on this journey south.

Cruising

CROSSING THE DRAKE PASSAGE

Days 12 and 13

As you recross the Drake Passage at the end of your expedition, rest assured you'll do so with a storehouse of memories to last a lifetime. You'll have experienced moments—soaring in a helicopter over remote parts of Antarctica being one of the most memorable—which few travelers can ever claim. Your Expedition Team will have a few remaining presentations for you—including the guest favorite, the end-of-voyage photoand-video compilation showcasing the most unforgettable moments of your voyage. Remember to take advantage of Ultramarine's amenities, especially Tundra Spa & Sauna, on the final days onboard.

Buenos Aires, Argentina

DISSEMBARK IN USHUAIA AND FLY TO BUENOS AIRES

Day 14

You will arrive in Ushuaia in the morning and disembark after breakfast—but the adventures aren't over. Your Charter Flight and Hotel Package includes your transfer to the airport for the return group charter flight to Buenos Aires.

Im Preis inbegriffen

- Ein 10- bis 15-minütiger Hubschrauberrundflug (wetter- und logistikabhängig).
- Eine offizielle Quark Expeditions-Parka zum Behalten
- Begleitung während der gesamten Reise durch unser erfahrenes Expeditionsteam, einschließlich Landgängen und anderen Aktivitäten
- Alle Zodiac-Transfers und Fahrten gemäß dem Tagesprogramm
- Alle Landgänge gemäß dem Tagesprogramm
- Unterbringung an Bord mit täglicher Zimmerreinigung
- Alle Mahlzeiten, Snacks, alkoholfreien Getränke und Säfte an Bord während der gesamten Reise.
- Kostenlose Auswahl an Bier, Weinen und ausgewählten Cocktails während der Bar-Öffnungszeiten und zum Abendessen
- Kostenloser Kaffee, Tee und Kakao rund um die Uhr verfügbar
- Formelle und informelle Präsentationen durch unser Expeditionsteam und Gastredner gemäß Programm
- Ein Foto-Tagebuch, das Ihre Expedition dokumentiert
- Ein Paar wasserdichte Expeditionstiefel zum Ausleihen für Landgänge und Zodiac-Kreuzfahrten
- Haartrockner und Bademäntel in jeder Kabine
- Kostenloser WLAN-Zugang auf einem Gerät für grundlegende Internetnutzung, E-Mails, Beiträge in sozialen Medien und Sprach-Apps. (Premium-Pakete sind für datenintensivere Anwendungen verfügbar.)
- Alle sonstigen Servicegebühren und Hafengebühren während des gesamten Programms
- Alle Gepäcktransporte an Bord des Schiffes

Nicht im Preis inbegriffen

- Internationale Flugkosten
- Reisepass- und eventuelle Visakosten
- Nicht genannte staatliche Ankunfts- und Abflugsteuern
- Mahlzeiten, sofern nicht anders angegeben
- Reisegepäck-, Reiserücktritts-, Reiseabbruch- und Reisekrankenversicherung – dringend empfohlen
- Übergepäckgebühren bei internationalen Flügen
- Obligatorische wasserdichte Hosen für Zodiacfahrten oder andere nicht erwähnte Ausrüstung
- Wäscherei, Bar, Massageservice und andere persönliche Kosten, sofern nicht angegeben
- Telefon- und Internetgebühren
- Freiwilliges Trinkgeld am Ende der Reise für das Expeditionspersonal und die Schiffsbesatzung
- Zusätzliche Übernachtungen
- An- und Abreisetransfers, außer wenn ausdrücklich angegeben
- Zusätzliche Aktivitäten, die nicht in den eingeschlossenen Aktivitäten aufgeführt sind

Ihr Schiff

Ihr Schiff ist die "Ultramarine". Ausführlich stellen wir Ihnen dieses Schiff auf unseren Schiffseiten vor. [Ausführliche Informationen zu diesem Schiff.](#)

Passagiere
199

Bordsprachen


Eisklasse
PC-6

Special
Helikopter

