

IHRE REISE

*Über den südlichen Polarkreis –  
 Expedition in die Antarktis*

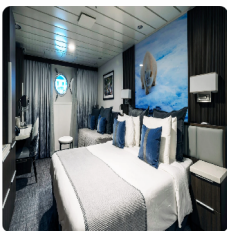
Reisetermin  
 05.12.2027 - 17.12.2027

Reisedauer  
 13 Tage

Reederei / Schiff  
 Sylvia Earle / Aurora Expeditions



Aurora Stateroom Triple Share



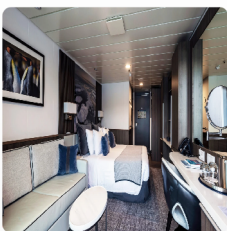
Dreibettbelegung

  
**€ 15.737**  
 pro Person

Gemeinschaftsbelegung

  
**€ 15.737**  
 pro Person

Aurora Stateroom Superior



Doppelbelegung

  
**€ 17.153**  
 pro Person

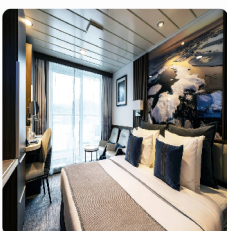
Einzelbelegung

  
**€ 25.730**  
 pro Person

Gemeinschaftsbelegung

  
**€ 17.153**  
 pro Person

Balcony Stateroom Category C - Solo



Doppelbelegung

  
**€ 17.601**  
 pro Person

Einzelbelegung

  
**€ 26.402**  
 pro Person

Gemeinschaftsbelegung

  
**€ 17.601**  
 pro Person

Balcony Stateroom Category B - Solo



Doppelbelegung

  
**€ 18.496**  
 pro Person

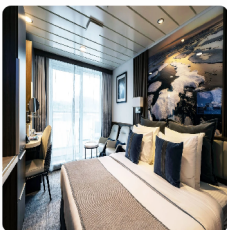
Einzelbelegung

  
**€ 27.744**  
 pro Person

Gemeinschaftsbelegung

  
**€ 18.496**  
 pro Person

Balcony Stateroom Category A - Solo



Doppelbelegung

  
**€ 19.913**  
 pro Person

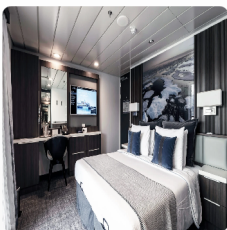
Einzelbelegung

  
**€ 29.870**  
 pro Person

Gemeinschaftsbelegung

  
**€ 19.913**  
 pro Person

Balcony Stateroom Superior



Doppelbelegung

  
**€ 21.778**  
 pro Person

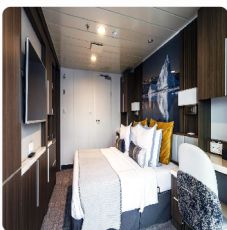
Einzelbelegung

  
**€ 32.667**  
 pro Person

Gemeinschaftsbelegung

  
**€ 21.778**  
 pro Person

Junior Suite




Doppelbelegung

  
**€ 25.956**  
 pro Person


Einzelbelegung

  
**€ 38.934**  
 pro Person

Captain's Suite




Doppelbelegung



**€29.611**

pro Person

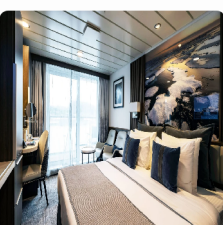
Einzelbelegung




**€44.417**

pro Person

Balcony Stateroom Category C




Doppelbelegung



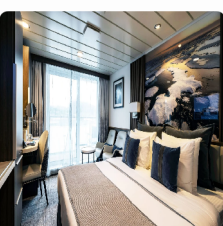
Nicht verfügbar

Einzelbelegung




Nicht verfügbar

Balcony Stateroom Category B




Doppelbelegung



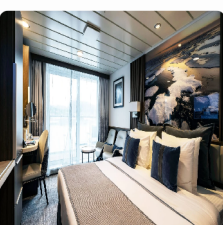
Nicht verfügbar

Einzelbelegung




Nicht verfügbar

Balcony Stateroom Category A




Doppelbelegung



Nicht verfügbar

Einzelbelegung



Nicht verfügbar



Day 1 Ushuaia

Arrive in Ushuaia, where you will be met by a representative of Aurora Expeditions and transferred with your fellow expeditioners to your assigned pre-voyage hotel. If you are already in Ushuaia, we ask you to make your way to your hotel. Check-in is from 3.00 pm. This afternoon, visit the Aurora Expeditions hospitality desk in the hotel lobby, between 3.00 pm and 7.00 pm, to collect your luggage tags, and confirm if you wish to join our Lake Escondido pre-embarkation tour tomorrow. Our team will confirm details regarding your embarkation day, answer any questions and provide you with information on where to dine or purchase last minute items. Expeditioners arriving after 7.00 pm will find a welcome pack waiting for them at check-in. We ask you to visit our hospitality desk tomorrow between 8.00 am – 10.00 am. The remainder of your time is at leisure. All meals today are at your own expense. Assigned accommodation: To be advised

Day 2  
Embarkation

This morning, enjoy breakfast and check-out. Please ensure your cabin luggage is fitted with cabin tags clearly labelled with your name and cabin number. Take your cabin luggage to hotel reception, prior to, or at check-out. Your luggage will be stored and transferred directly to the port for clearance, to be placed in your cabin ahead of your arrival on board. Please keep any valuables or personal items with you throughout the day. Those wishing to join our Lake Escondido tour today, please meet in the hotel lobby at 8.45 am. This tour offers us an unforgettable panoramic drive through big valleys of glacial origin, evergreen and deciduous forests, waterfalls and rivers, in the vastness of the Andes Mountain Range. We will leave Ushuaia city to the northeast of Tierra del Fuego, driving through peat bog valleys to reach Garibaldi Pass, only accessible by a winding road that will take us to a panoramic point. From here we will have amazing panoramic views of Lake Escondido and, if weather conditions allow, of Fagnano Lake. We will start our descent towards the northeast to reach Fagnano Lake's shore where we will visit a local ranch. After appreciating the landscape, you will have the chance to enjoy the typical Fuegian Lamb barbecue. Enjoy some free time there before returning to Ushuaia for ship embarkation. Alternatively, enjoy your day at leisure and meet at your hotel lobby or from the meeting point at the parking lot near the pier (details will be given by our ground staff at the hotel), to be transferred to the pier for embarkation. Once onboard, you'll have time to settle into your cabin before our important mandatory briefings. As the ship pulls away from port, we'll gather on the deck to commence our adventure with spectacular views over Ushuaia and Tierra del Fuego. This evening, get to know your fellow expeditioners and friendly expedition team and crew at a welcome dinner to celebrate the start of a thrilling adventure to Antarctica.

Day 3-4 Drake  
Passage  
Crossing

As we commence the Drake Passage crossing, we make the most of our time getting comfortable with the motions of the sea. Our expedition team prepare you for our first landing with important wildlife guidelines and biosecurity procedures and start our lecture program to help you learn more about Antarctica's history, wildlife and environment. Our wildlife experiences begin as we enjoy watching and photographing the many seabirds, including majestic albatrosses and giant petrels following our vessel. On sea days, you can enjoy the facilities on board the vessel including the gym, sauna and jacuzzis or relax in one of the observation lounges. Nearing the South Shetland Islands and the tip of the Antarctic Peninsula on the afternoon of day four, the excitement is palpable with everyone converging on one of the observation decks watching for our first iceberg. The ocean takes on a whole new perspective once we are below the Antarctic Convergence and are surrounded by the surreal presence of floating ice sculptures. The memory of your first big iceberg sighting is likely to remain with you for a lifetime. Time and weather permitting, we may attempt our first landing in Antarctica by late afternoon.

Days 5-10  
Antarctic  
Peninsula &  
Antarctic  
Circle

It's almost impossible to describe the feeling of arriving in Antarctica. Spotting your first iceberg and taking a deep breath of some of the most fresh, crisp air on earth is an experience that will stay with you forever. Once we arrive, the western side of the Antarctic Peninsula and the South Shetland Islands are ours to explore, and we have a host of choices available to us. Because we are so far south, we will experience approximately 18-24 hours of daylight and the days can be as busy as you wish. Your experienced expedition team, who have made countless journeys to this area, will use their expertise to design your voyage from day to day, choosing the best options based on the prevailing weather, ice conditions and wildlife opportunities. You will want to rug up before joining Zodiac cruises along spectacular ice cliffs or among grounded icebergs, keeping watch for whales, seals and porpoising penguins. Zodiacs will also transport you from the ship to land, where you can visit penguin rookeries, discover historic huts and explore some of our favourite spots along the peninsula. While ashore we aim to stretch our legs, wandering along pebbly beaches or perhaps up snow-covered ridgelines to vantage points with mountains towering overhead and ice-speckled oceans below. If you have chosen an optional activity, you will have the option to do that whenever conditions allow, and of course keen polar plungers will have the chance to fully immerse themselves in polar waters - conditions permitting. In addition to Zodiac cruises and shore excursions, we may ship cruise some of the narrow, dramatic straits separating offshore islands from the mainland, or linger in scenic bays to watch whales travelling or feeding. This is a great time to enjoy the observation lounge or make your way to the bridge for uninterrupted views of Antarctica in all its splendour. Keep an ear out for the creak and deep rumble of glaciers as they carve their way from summit to sea. Take a quiet moment to experience the wonder of this incredible white continent. On this voyage, conditions permitting, we plan to cross the Antarctic Circle, an imaginary line located at the Antarctic Circle at latitude 66°33' South (approximately). Crossing below The Circle is certainly a special highlight for many people, and the moment will be celebrated with a toast out on the deck (weather permitting). You have earned some boasting privileges, joining a small group of lucky adventurers who have ventured to this part of the world. As we approach and cross the Antarctic Circle, you will notice subtle changes in the landscape, and also in the distribution of wildlife. The waters at this time of year are rich with krill and we hope to see plenty of whales - particularly humpbacks and minke and enjoy the spectacle of penguins feeding their ravenous chicks.

Days 11-12  
Drake Passage  
Crossing

Enjoy a final morning landing in the South Shetland Islands before we re-enter the Drake Passage for our return journey to South America. With lectures and film presentations to complete our Antarctic experience, there is still plenty of time to enjoy the magic of the Southern Ocean and the life that calls it home. There is time for reflection and discussion about what we have seen and experienced. We hope you become ambassadors for Antarctica telling your family, friends and colleagues about your journey to this magical place, advocating for its conservation and preservation so that they might one day visit the region to experience what you have been lucky to see and do here. As we approach the tip of South America, our Captain may sail close to legendary Cape Horn, weather and time permitting.

Day 13  
Disembark in  
Ushuaia

During the early morning, we cruise up the Beagle Channel, before quietly slipping into dock in Ushuaia, where we will be free to disembark around 8.00 am. Farewell your expedition team and fellow passengers as we all continue our onward journeys, hopefully with a newfound sense of the immense power of nature. Upon disembarkation, for those continuing their travels in the region, transportation to the hotel will be arranged exclusively for guests who have booked their accommodations through Aurora or for those staying in downtown areas near the port. Expeditioners departing on flights prior to 14.30 pm will be directly transferred to Ushuaia Airport, those with flights after 14.30 pm will have the opportunity to explore Ushuaia before an afternoon airport transfer, and the transfer procedures and details will be communicated onboard before disembarkation. \*Note: At the conclusion of the voyage, we do not recommend booking flights departing Ushuaia prior to 12.00 pm on the day of disembarkation in case there are delays.

#### **Im Preis inbegriffen**

- All airport transfers mentioned in the itinerary.
- One night's hotel accommodation including breakfast, in Ushuaia on Day 1.
- Lake Escondido tour in Ushuaia, on Day 2.
- Onboard accommodation during voyage, including daily cabin service.
- All meals, snacks, tea, coffee, soft drinks and juices during voyage.
- Beer and house wine with dinner.
- Captain's Farewell reception including four-course dinner, house cocktails, house beer and wine, non-alcoholic beverages.
- All shore excursions and Zodiac cruises.
- Educational lectures and guiding services provided by Expedition Team.
- Complimentary access to onboard expedition doctor and medical clinic (initial consultation).
- One 3-in-1 waterproof, polar expedition jacket.
- Complimentary use of Muck Boots during the voyage.
- Comprehensive pre-departure information.
- Port surcharges, permits and landing fees.
- Wi-Fi\*.

\*Please note we travel to remote regions and therefore the connection can be unreliable.

---

#### **Nicht im Preis inbegriffen**

- International or domestic flights – unless specified in the itinerary.
- Transfers – unless specified in the itinerary.
- Airport arrival or departure taxes.
- Passport, visa, reciprocity and vaccination fees and charges.
- Travel insurance or emergency evacuation charges.
- Hotel accommodation and meals – unless specified in the itinerary.
- Optional excursions and optional activity surcharges.
- All items of a personal nature, including but not limited to alcoholic beverages (outside of dinner service), gratuities, laundry services, personal clothing, medical expenses or phone charges.

*Note: A \$15 USD per person per day gratuity for the crew is automatically added to your onboard account. It is at your discretion if you would like to remove the tip (or adjust the amount) when you settle your bill. It is not necessary to tip the expedition team members. This gratuity amount is included for suites as part of their 'Suite Benefits'.*

## *Ihr Schiff*

Ihr Schiff ist die "Sylvia Earle". Ausführlich stellen wir Ihnen dieses Schiff auf unseren Schiffseiten vor. [Ausführliche Informationen zu diesem Schiff.](#)

Passagiere

130

Bordsprachen



Eisklasse

1A

